

RIGHT OF WAY IN SECTION 28

PARCEL	OWNER	LOCATION	TORRENS CERTIFICATE NO.	NEW T.J.R./W ACRES (MORE OR LESS)	TEMPORARY EASEMENT	BUILDING REMOVAL EASEMENT	EASEMENT EXPIRES ON	PERMANENT R/W INTEREST
304A	CLARENCE KRIE	SW1/4NE1/4			0.03		12-1-87	ACCESS
304C	STEPHAN A. LAWRENCE	SW1/4NE1/4		0.55				FEE
304D	CITY OF RED WING	SW1/4NE1/4		0.42				FEE
304E	MILO ASLAKSON	W1/2 NE1/4						ACCESS
304F	DAVID BARRINGER	NW1/4NE1/4			0.02		12-1-87	ACCESS
304G	OTTO A. FLEMKE	NW1/4NE1/4						ACCESS
304H	CHARLEY MARTENS	NW1/4NE1/4		0.01				FEE
304J	VERNON W. HANSON	NE1/4NE1/4		0.22	0.03		12-1-87	FEE
304K	DAVID W. ISAACSON	NE1/4NE1/4		0.16				FEE
304L	MARGERY S. CAMPBELL	NE1/4NE1/4		0.04				FEE
304M	R. W. CAMPBELL	NE1/4NE1/4			0.07		12-1-87	ACCESS
304N	ROGER W. PETERSMEYER	NE1/4NE1/4			0.02		12-1-87	ACCESS
304P	DAVID KUEHNI	NE1/4NE1/4		0.01	0.02		12-1-87	FEE
304Q	RONALD H. TESDALL	NE1/4NE1/4		0.15	0.04		12-1-87	FEE
304T	FRANK L. JOHNSON	NW1/4NE1/4			0.03		12-1-87	FEE
RIGHT OF WAY IN SECTION 21								
304S	MORRIS E. ANDERSON	SE1/4SE1/4		0.02	0.02		12-1-87	FEE
RIGHT OF WAY IN KINGSWOOD FIRST ADDITION								
304	PAUL W. LAWRENCE	LOTS 1&2 BK 1		33296	3636		12-1-87	FEE
304B	PAUL W. LAWRENCE CONST.	LOT 5 BK 1		17795				FEE

# MINNESOTA DEPARTMENT OF TRANSPORTATION RIGHT OF WAY PLAT NO. 25-4

STATE PROJECT NO. 2514(61)=3-60-4)  
IN THE SOUTHEAST QUARTER OF SECTION 21, T.113 N., R.15 W., AND  
IN THE NORTHEAST QUARTER OF SECTION 28, T.113 N., R.15 W.

GOODHUE COUNTY, MINNESOTA

THE COMMISSIONER OF TRANSPORTATION IS HEREBY DESIGNATING THE DEFINITE LOCATION OF TRUNK HIGHWAY NO. 61 FROM 1/3 MILE WEST OF TO 1.5 MILES EAST OF TRUNK HIGHWAY NO.19

As shown on this plat prepared by the State of Minnesota Department of Transportation as hereby certified as the official plat of that portion of said T.113 N., R.15 W. within the designated portion of Sections 21 and 28 and the Commissioner's Order therefor, pursuant to Minnesota Statutes, section 168.01, subd. 2, section 168.04, subd. 1, and section 168.05.

Commissioner's Order No.	Location	Nature of Interest
66421	PLATS 25-3 AND 25-4	Definite location with access, temporary easement and building removal easement.

Recommended for Certification: Certified:

Richard P. Jensen  
 Commissioner of Transportation  
 Date: 2-22-82  
 Date: 2-22-82  
 Date: 2-22-82  
 Date: 2-22-82

I hereby certify that this plat was prepared by me or under my direct supervision and that I am a duly Registered Land Surveyor under the Law of the State of Minnesota; that this plat meets requirements of Minnesota Statutes, section 168.01, subd. 2, section 168.04, subd. 1 and section 168.05; that parcel corners are correctly described and delineated on the plat and that the proposed right-of-way boundary lines are correctly delineated on the plat.

Certified by: John E. Jensen 10460 2-19-82  
Registered Land Surveyor  
Office of Surveying & Mapping

I hereby certify that this plat was surveyed by me or under my direct supervision and that I am a duly Registered Land Surveyor under the Law of the State of Minnesota; that all measurements are correctly shown on this plat and that all monuments have been correctly placed as shown on this plat.

Certified by: Mark W. Jensen 11527 2-24-82  
Registered Land Surveyor  
MNDOT District Office

### SURVEY STANDARDS

- The plat values, azimuths and distances are based on the project control survey system.
- The boundary monuments shown on this plat have been field checked for location. The standard deviation for the monument position is 0.1 ft.
- The state plane coordinate shown on one monument are based on ties to national control monuments.
- Certificates of Location have been filed at the County Recorder's Office and/or the County Surveyor's Office for the section corner monuments shown on this plat.
- For details of this survey contact the Surveying and Mapping Section at the Minnesota Department of Transportation, ROCHESTER, Minnesota.

### AZIMUTH ORIENTATION AND GRID CONVERSION

Plat azimuths are oriented to Minnesota State Plane Coordinate System with 8 degrees 8 minutes 8 seconds being 1980 NORTH.  
Plat distances are ground lengths and can be converted to Minnesota State Plane Grid lengths by multiplying Plat distances by 0.9998794

### CONVENTIONAL SYMBOLS

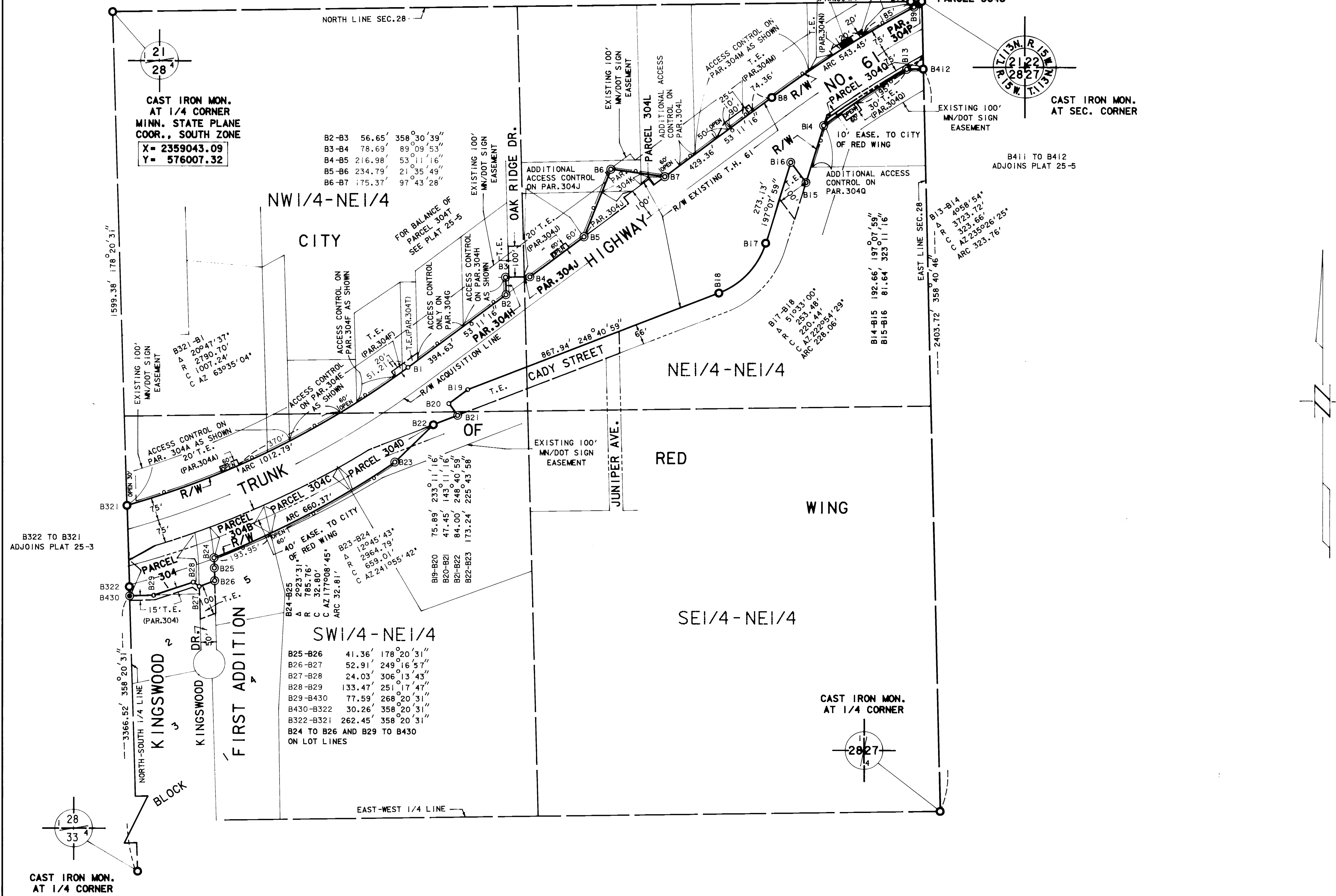
Section Line	—————	Building Removal Easement	B, R, E
Quarter Line	—————	R/W Parcel Number	3
Sixteenth Line	—————	Access Control	o
Property Line	—————	Access Opening	o
R/W Boundary	—————	Cast Iron Monument or 2x2 D.D.T. Iron Pipe with Aluminum Cap	o
Existing D.D.T./R/W Line	—————	3/4" D.D.T. Iron Pin	o
Other Road R/W's	—————	Other Iron Monument	o
Railroad R/W	—————	Concrete or Stone Monument	o
Private Easement	—————	R/W Boundary Corner	o
Temporary Easement	—————		

DISTANCES SHOWN TO FEET 66.68 ETC MAKE EXTENSIVE VALUES.



See Cont. of  
Construction  
Book 194 M.R.  
page 20

SE1/4-SE1/4



CAST IRON MON. AT 1/4 CORNER

DOC. NO. 779696  
 OFFICE OF COUNTY RECORDER  
 GOODHUE COUNTY, MINN.  
 I HEREBY CERTIFY THAT THIS PLAT HAS BEEN FILED IN THIS OFFICE  
 BOOK 194 M.R. PAGE 20  
 COUNTY RECORDER