

MINNESOTA DEPARTMENT OF TRANSPORTATION RIGHT OF WAY PLAT NO. 25- 5

STATE PROJECT NO. 2514(61-3-60-4)
IN THE SOUTHWEST QUARTER OF SECTION 22, T.113 N., R.15 W., AND
IN THE NORTHWEST QUARTER OF SECTION 27, T.113 N., R.15 W.

GOODHUE COUNTY, MINNESOTA

RIGHT OF WAY IN SECTION 22									
PARCEL	OWNER	LOCATION	TORREN'S CERTIFICATE NO.	NEW T.H. R/W ACRES (MORE OR LESS)	TEMPORARY EASEMENT REMOVAL (OR LESS)	BUILDING REMOVAL EASEMENT	EASEMENT EXPIRES ON	PERMANENT R/W INTEREST	
305	EUGENE H. BURKE	SW1/4SW1/4	990	0.34				FEE	
305A	ARNOLD NELSON	SW1/4SW1/4	963	0.15				FEE	
305B	CLETUS L. VAN NUTTA	SW1/4SW1/4	1234	0.11				FEE	
305C	BARRY L. JOHNSON	SW1/4SW1/4	1539	0.07				FEE	
305D	ERVIN G. LAMPMAN	SW1/4SW1/4	912		0.07		12-1-87	ACCESS	
305E	RALPH T. COX	SW1/4SW1/4	1583	0.01	0.05		12-1-87	FEE	
305F	PAULINE G. HERDER	SW1/4SW1/4	1532		0.04		12-1-87	ACCESS	
305G	FRED H. STUDEMANN	SW1/4SW1/4	1219	0.02	0.10		12-1-87	FEE	
305H	HYLDRED E. ARMSTRONG	S1/2 SW1/4	1800					ACCESS	
305J	RICHARD G. BEISSEL	SE1/4SW1/4	1464					ACCESS	
305K	DALE A. JOHNSON	SE1/4SW1/4	1921					ACCESS	
305L	BRIAN J. JOHNSON	SE1/4SW1/4	1251					ACCESS	
305N	HARRY W. TOMHARE	SW1/4SW1/4	1295 & 1767	0.01	0.06		12-1-87	FEE	
305P	JERRY C. LYONS	SW1/4SW1/4	1282		0.07		12-1-87	FEE	
305Q	GENEVA HADLER	SW1/4SW1/4	1314		0.05		12-1-87	FEE	
305R	ARTHUR E. FISCHER	SW1/4SW1/4	1875		0.01		12-1-87	FEE	
305S	ROY H. SHAFER	SW1/4SW1/4	2048 & 2049		0.02		12-1-87	FEE	
305T	BERNARD A. PETERSON	SW1/4SW1/4	1918		0.03		12-1-87	ACCESS	
305U	ARLIE A. ANDERSON	SW1/4SW1/4	601					ACCESS	
305V	EUGENE L. HASSELQUIST	SE1/4SW1/4	2015	0.05				FEE	
305W	HAROLD H. ROTHFORK	SW1/4SW1/4	603	0.06	0.03		12-1-87	FEE	
307	OSCAR B. GLAD	SE1/4SW1/4			0.10			FEE	
508F	RED WING ADVERTISING CO.	SE1/4SW1/4			0.01			FEE	
508G	CITY OF RED WING	SE1/4SW1/4						ACCESS	
RIGHT OF WAY IN SECTION 27									
304R	EVELYN HARRISON	NW1/4NW1/4		0.13	0.05		12-1-87	FEE	
304T	FRANK L. JOHNSON	NW1/4NW1/4		0.01				FEE	
304U	VINCENT L. LAWRENCE	NW1/4NW1/4		0.07	0.12		12-1-87	FEE	
RIGHT OF WAY IN SECTIONS 22 AND 27									
305M	MITCHEAL P. LAWRENCE	SW1/4SW1/4 SEC. 22 NW1/4NW1/4 SEC. 27	1768	0.02				FEE	

THE COMMISSIONER OF TRANSPORTATION IS HEREBY DESIGNATING THE DEFINITE LOCATION OF TRUNK HIGHWAY NO. 61 FROM 1.5 MILES TO 2.75 MILES EAST OF TRUNK HIGHWAY NO. 19

As shown on this plat prepared by the State of Minnesota Department of Transportation is hereby certified as the official plat of that portion of said T.H. 61 within the designated portion of Sections 22 and 27 and the Commissioner's Order therefor, pursuant to Minnesota Statutes, section 161.16 subd. 2, section 160.14 subd. 1, and section 160.085.

Commissioner's Order No. 65934 Location PLATS 25-5 & 25-6 Nature of Interest Define location, width, access, temporary easement and building removal easement.

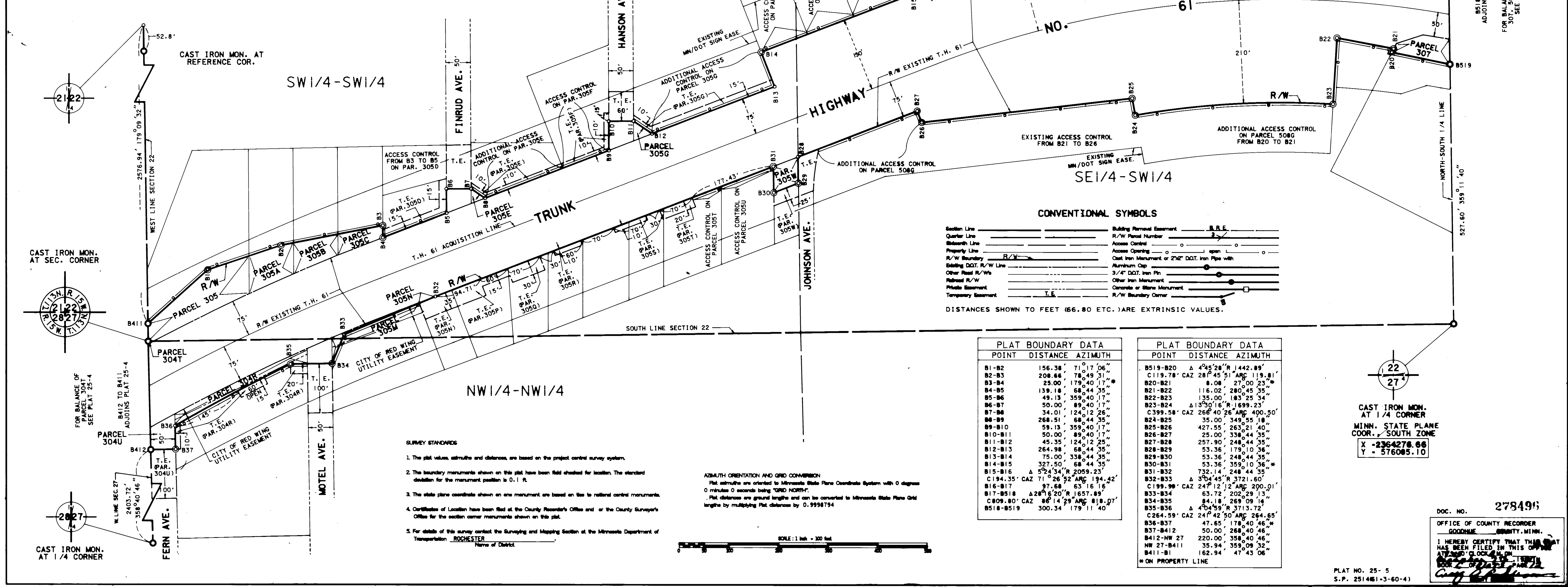
Recommended for Certification: Certified: Richard P. Braun, Commissioner of Transportation

Richard P. Braun, Commissioner of Transportation
Date: 12-2-81 by F.C. Marshall, 12-4-81
Date: 12-4-81
Date: 12-4-81

Richard P. Braun, Commissioner of Transportation
Date: 12-2-81 by F.C. Marshall, 12-4-81
Date: 12-4-81

I hereby certify that this plat was prepared by me or under my direct supervision and that I am a duly Registered Land Surveyor under the Laws of the State of Minnesota; that this plat meets requirements of Minnesota Statutes, Section 161.16, Subd. 2, Section 160.14, Subd. 1, and Section 160.085 that parcel ownership is correctly described and delineated on this plat and that the proposed right-of-way boundary lines are correctly delineated on this plat.

I hereby certify that this plat was surveyed by me or under my direct supervision and that I am a duly Registered Land Surveyor under the Laws of the State of Minnesota; that all measurements are correctly shown on this plat and that all monuments have been correctly placed as shown on this plat.



POINT	DISTANCE	AZIMUTH
B1-B2	156.38'	71° 07' 06"
B2-B3	208.16'	78° 49' 31"
B3-B4	25.00'	179° 40' 17"
B4-B5	139.18'	68° 44' 35"
B5-B6	49.13'	359° 40' 17"
B6-B7	50.00'	89° 40' 17"
B7-B8	34.01'	124° 12' 26"
B8-B9	268.51'	68° 44' 35"
B9-B10	59.13'	359° 40' 17"
B10-B11	50.00'	89° 40' 17"
B11-B12	45.35'	124° 12' 25"
B12-B13	264.98'	68° 44' 35"
B13-B14	75.00'	338° 44' 35"
B14-B15	327.50'	68° 44' 35"
B15-B16	574.34'	2059.23"
B16-B17	194.35'	52° 52' 52" ARG 194.42'
B17-B18	97.68'	63° 16' 16"
B18-B19	281.62'	1657.89"
B19-B20	86° 14' 29" ARG 818.07'	
B20-B21	300.34'	179° 11' 40"

POINT	DISTANCE	AZIMUTH
B519-B20	4° 45' 28" R 1442.89'	
C119.78'	CAZ 28° 45' 51" ARG 119.81'	
B20-B21	8.08'	27° 00' 23"
B21-B22	116.02'	280° 45' 35"
B22-B23	135.00'	183° 25' 34"
B23-B24	13° 30' 16" R 1699.23'	
C399.58'	CAZ 266° 40' 26" ARG 400.50'	
B24-B25	35.00'	349° 55' 16"
B25-B26	427.55'	253° 21' 40"
B26-B27	25.00'	338° 44' 35"
B27-B28	257.90'	248° 44' 35"
B28-B29	53.36'	179° 10' 36"
B29-B30	53.36'	248° 44' 35"
B30-B31	53.36'	359° 10' 36"
B31-B32	732.14'	248° 44' 35"
B32-B33	3° 04' 45" R 3721.60'	
C199.99'	CAZ 247° 12' 12" ARG 200.01'	
B33-B34	63.72'	202° 29' 13"
B34-B35	84.18'	269° 09' 14"
B35-B36	4° 40' 59" R 3713.72'	
C264.59'	CAZ 247° 42' 50" ARG 264.65'	
B36-B37	47.65'	174° 40' 46"
B37-B412	50.00'	268° 40' 46"
B412-NW 27	220.00'	358° 40' 46"
NW 27-B411	35.94'	359° 09' 32"
B411-B1	162.94'	47° 43' 06"

DOC. NO. 278496

OFFICE OF COUNTY RECORDER
GOODHUE COUNTY, MINN.

I HEREBY CERTIFY THAT THIS PLAT HAS BEEN FILED IN THIS OFFICE IN ACCORDANCE WITH THE REQUIREMENTS OF MINNESOTA STATUTES, SECTION 160.085.

CAST IRON MON. AT 1/4 CORNER
MINN. STATE PLANE COOR. SOUTH ZONE
X = 2364276.66
Y = 576085.10

PLAT NO. 25- 5
S.P. 2514(61-3-60-4)