

MINNESOTA DEPARTMENT OF TRANSPORTATION
RIGHT OF WAY PLAT NO. 25-106

CONTROL SECTION NO. 2506 (52=20) 902

IN THE SOUTH HALF OF THE NORTHEAST QUARTER OF SECTION 7, T. 110 N., R. 16 W.,
IN THE NORTHEAST QUARTER OF THE SOUTHWEST QUARTER OF SECTION 7, T. 110 N., R. 16 W.,
IN THE NORTHWEST QUARTER OF THE SOUTHWEST QUARTER OF SECTION 8, T. 110 N., R. 16 W.,
GOODHUE COUNTY, MINNESOTA

THE COMMISSIONER OF TRANSPORTATION IS HEREBY DESIGNATING THE DEFINITE LOCATION OF TRUNK HIGHWAY
NO. 52 FROM THE JUNCTION OF TRUNK HIGHWAY NO. 57 IN HADER TO 4 MILES SOUTH

as shown on this plat prepared by the State of Minnesota Department of Transportation is hereby certified as the official plat of that
portion of said T.H. No. 52 within the designated portion of Sections 7 and 8 and the Commissioner's Order therefor, pursuant to
Minnesota Statutes, Section 160.085, Section 160.14 subd. 1, Section 161.16 subd. 2, and Section 161.18.

It is further ordered that the Commissioner of Transportation's Orders covering any existing right of way, outside of the plat
boundary, shall remain in full force and effect until such time the existing right of way Orders are rescinded.

It is further ordered that it is necessary to acquire all trees, shrubs, grass and herbage within the right of way of said Trunk Highway,
and to keep and have the exclusive control of the same.

Commissioner's Order No. 99270 Location Plat 25-106 Nature of Interest: Definite location, width and access.

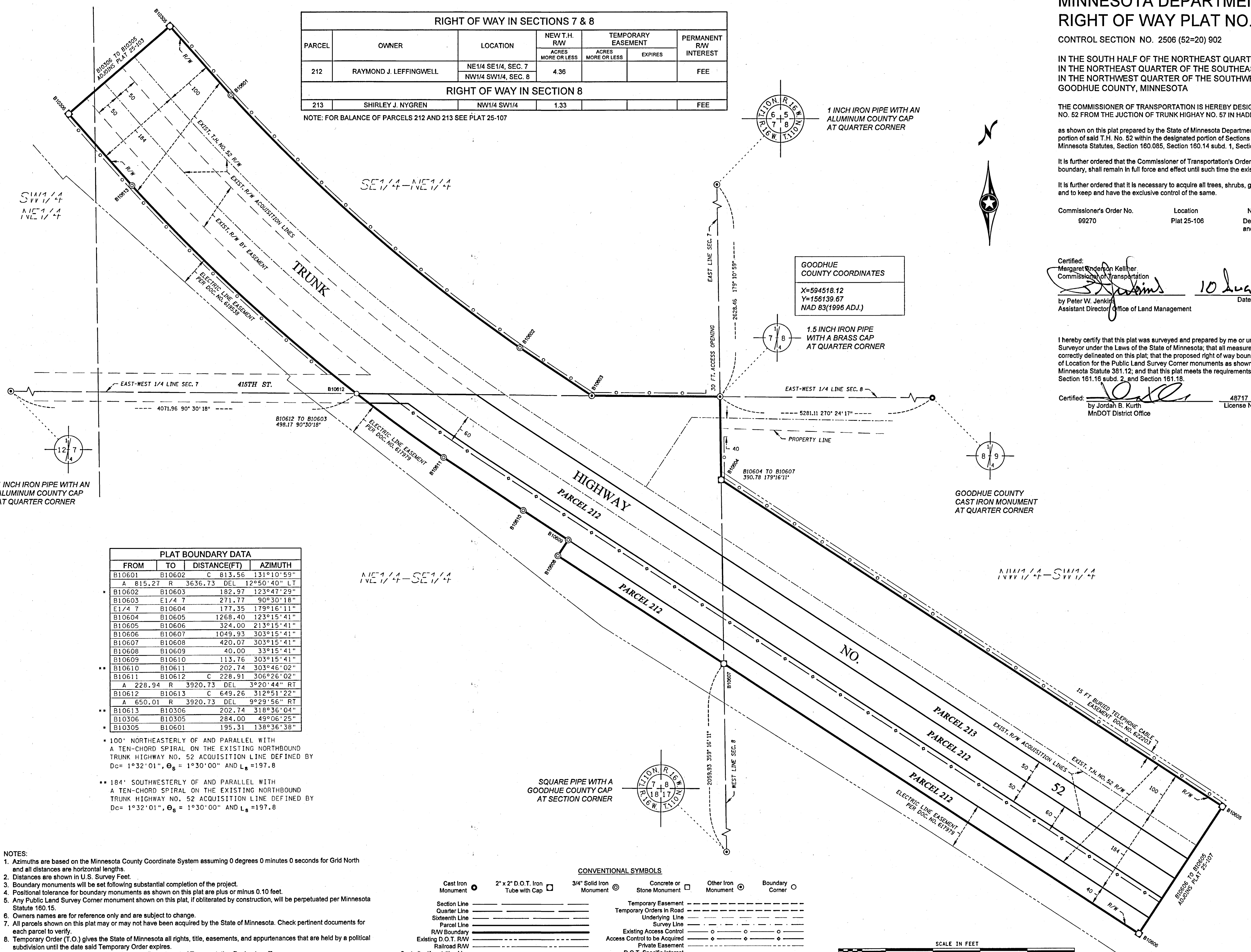
Certified: Margaret Anderson Kellner, Commissioner of Transportation, 10 Aug. 21
by Peter W. Jenkins, Assistant Director of Office of Land Management, Date

I hereby certify that this plat was surveyed and prepared by me or under my direct supervision and that I am a duly Licensed Land
Surveyor under the Laws of the State of Minnesota; that all measurements are correctly shown on this plat; that the parcel(s) are
correctly delineated on this plat; that the proposed right of way boundary lines are correctly designated on this plat; that Certificates
of Location for the Public Land Survey Corner monuments as shown on this plat have been or will be filed in accordance with
Minnesota Statute 381.12; and that this plat meets the requirements of Minnesota Statutes, Section 160.085, Section 160.14 subd. 1,
Section 161.16 subd. 2, and Section 161.18.

Certified: Jordah B. Kurth, License No. 48717, Date Aug. 10, 2021
MnDOT District Office

Table with columns: PARCEL, OWNER, LOCATION, NEW T.H. R/W, TEMPORARY EASEMENT, PERMANENT R/W INTEREST. Rows for parcels 212 and 213.

NOTE: FOR BALANCE OF PARCELS 212 AND 213 SEE PLAT 25-107



GOODHUE COUNTY COORDINATES
X=594518.12
Y=156139.67
NAD 83(1996 ADJ.)

1.5 INCH IRON PIPE WITH A BRASS CAP AT QUARTER CORNER

GOODHUE COUNTY CAST IRON MONUMENT AT QUARTER CORNER

SQUARE PIPE WITH A GOODHUE COUNTY CAP AT SECTION CORNER

PLAT BOUNDARY DATA table with columns: FROM, TO, DISTANCE(FT), AZIMUTH. Lists boundary points B10601 through B10305.

- 100' NORTHEASTERLY OF AND PARALLEL WITH A TEN-CHORD SPIRAL ON THE EXISTING NORTHBOUND TRUNK HIGHWAY NO. 52 ACQUISITION LINE DEFINED BY Dc= 1°32'01", θs = 1°30'00" AND Ls =197.8
- 184' SOUTHWESTERLY OF AND PARALLEL WITH A TEN-CHORD SPIRAL ON THE EXISTING NORTHBOUND TRUNK HIGHWAY NO. 52 ACQUISITION LINE DEFINED BY Dc= 1°32'01", θs = 1°30'00" AND Ls =197.8

- NOTES: 1. Azimuths are based on the Minnesota County Coordinate System assuming 0 degrees 0 minutes 0 seconds for Grid North and all distances are horizontal lengths.
- 2. Distances are shown in U.S. Survey Feet.
- 3. Boundary monuments will be set following substantial completion of the project.
- 4. Positional tolerance for boundary monuments as shown on this plat are plus or minus 0.10 feet.
- 5. Any Public Land Survey Corner monument shown on this plat, if obliterated by construction, will be perpetuated per Minnesota Statute 160.15.
- 6. Owners names are for reference only and are subject to change.
- 7. All parcels shown on this plat may or may not have been acquired by the State of Minnesota. Check pertinent documents for each parcel to verify.
- 8. Temporary Order (T.O.) gives the State of Minnesota all rights, title, easements, and appurtenances that are held by a political subdivision until the date said Temporary Order expires.
- 9. For details of the survey contact the Minnesota Department of Transportation Rochester office.

CONVENTIONAL SYMBOLS table listing symbols for monuments, easements, and acquisition lines.



OFFICE OF COUNTY RECORDER
GOODHUE COUNTY, MINNESOTA
I HEREBY CERTIFY THAT THIS PLAT WAS FILED IN THIS OFFICE FOR PUBLIC RECORD ON THIS 17th DAY OF August, 2021 AT 2:07 PM AND WAS DULY RECORDED AS DOCUMENT NO. 278139
COUNTY RECORDER