

RIGHT OF WAY IN SECTION 20								
PARCEL	OWNER	LOCATION	TERRACE'S CERTIFICATE NO.	NEW T.M. R/W		TEMPORARY EASEMENT	EASEMENT EXPIRES ON	PERMANENT R/W INTEREST
				ADJACENT	ADJACENT			
206K	CHICAGO & NORTHWESTERN TRANSPORTATION CO.	SW1/4SW1/4		0.82	0.93			FEE
RIGHT OF WAY IN SECTIONS 20 AND 29								
206M	MARIAN J. GUSTAFSON	S1/2 SW1/4 SEC 20 NE1/4NW1/4 SEC 29		4.28		3.26	12-1-88	FEE

MINNESOTA DEPARTMENT OF TRANSPORTATION RIGHT OF WAY PLAT NO. 25-10*

STATE PROJECT NO. 2514(61-3-60-3)
IN THE WEST HALF OF SECTION 20, T.113 N., R.15 W., AND
IN THE NORTHWEST QUARTER OF SECTION 29, T.113 N., R.15 W., AND
IN THE EAST HALF OF SECTION 19, T.113 N., R.15 W.

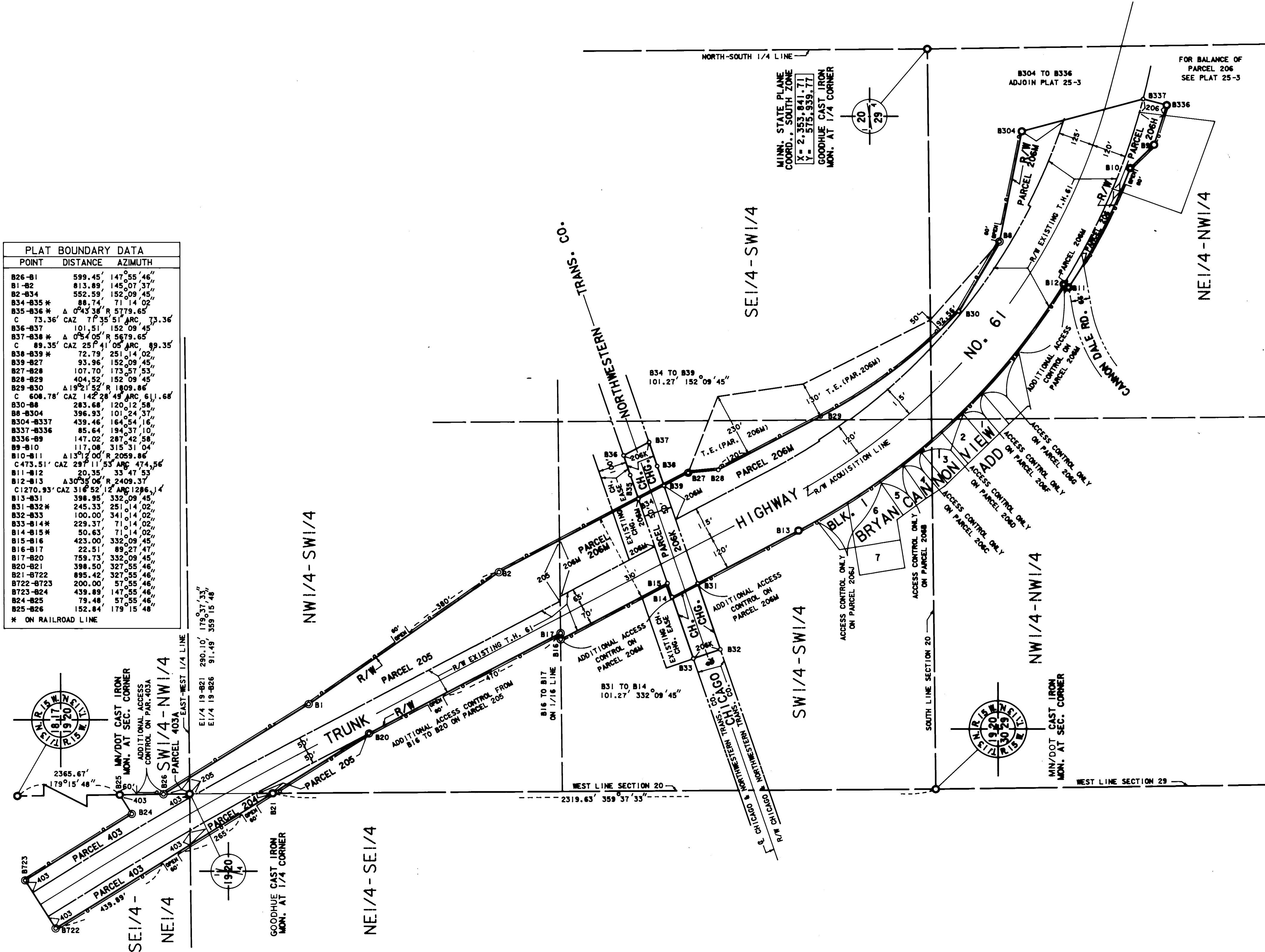
GOODHUE COUNTY, MINNESOTA

* AMENDMENT TO: MINNESOTA DEPARTMENT OF TRANSPORTATION
RIGHT OF WAY PLAT NO. 25-7
STATE PROJECT NO. 2514(61-3-60-3)
PARCELS 206K AND 206M

PLAT BOUNDARY DATA

POINT	DISTANCE	AZIMUTH
B26-B1	599.45'	147°55'46"
B1-B2	813.89'	145°07'37"
B2-B3	552.59'	152°09'45"
B3-B4	88.74'	71°14'02"
B35-B36*	A 0°43'38" R 5779.65'	
C	73.36' CAZ 7°35'51" ARC 73.36'	
B36-B37*	A 0°54'05" R 5679.65'	
C	89.35' CAZ 25°41'05" ARC 89.35'	
B38-B39*	72.79' 251°14'02"	
B39-B27	93.96' 152°09'45"	
B27-B28	107.70' 173°57'53"	
B28-B29	404.52' 152°09'45"	
B29-B30	A 19°21'52" R 1809.86'	
C	608.78' CAZ 142°28'45" ARC 611.68'	
B30-B8	283.68' 120°12'58"	
B8-B304	396.93' 101°24'37"	
B304-B337	439.46' 164°54'16"	
B337-B336	85.64' 194°37'10"	
B336-B9	147.02' 287°42'58"	
B9-B10	117.08' 315°31'04"	
B10-B11	A 13°12'00" R 2059.86'	
C	473.51' CAZ 29°11'53" ARC 474.56'	
B11-B12	111.33' 33°43'53"	
B12-B13	A 30°59'04" R 2409.37'	
C	1270.93' CAZ 31°52'12" ARC 1296.14'	
B13-B31	398.95' 332°09'45"	
B31-B32*	245.33' 251°14'02"	
B32-B33	100.00' 341°14'02"	
B33-B14*	229.37' 71°14'02"	
B14-B15*	50.83' 71°14'02"	
B15-B16	423.00' 332°09'45"	
B16-B17	22.51' 89°27'47"	
B17-B20	759.73' 332°09'45"	
B20-B21	398.50' 327°55'46"	
B21-B22	895.42' 327°55'46"	
B22-B23	200.00' 57°55'46"	
B23-B24	439.89' 147°55'46"	
B24-B25	79.48' 57°55'46"	
B25-B26	152.84' 179°15'48"	

* ON RAILROAD LINE



THE COMMISSIONER OF TRANSPORTATION IS HEREBY DESIGNATING THE DEFINITE LOCATION OF TRUNK HIGHWAY NO. 61 FROM 0.3 MILE WEST OF TO 1.2 MILE NORTHWEST OF TRUNK HIGHWAY NO. 19

As shown on this plat prepared by the State of Minnesota Department of Transportation is hereby certified as the official plat of this portion of road T.H. 61 within the designated portion of Sections 20, 29 and the Commissioner's Order transfer, pursuant to Minnesota Statutes, sections 163.01 sub 2, motion 163.01 sub 1, and section 163.02.

Commissioner's Order No.	Location	Nature of Interest
68091	PLAT 25-10	Definite location, width, access, easements, easement and building removal easement.

Recommended for Certification: _____ Certified: _____
 Richard P. Brown, Commissioner of Transportation
 Date: 8-18-83
 J. E. Johnson, Director of R/W Operations, Date: 8-18-83
 F. E. Marshall, Assistant Commissioner of Transportation, Date: 8-18-83

I hereby certify that this plat was prepared by me or under my direct supervision and that I am a duly Licensed Land Surveyor under the Laws of the State of Minnesota and that all measurements are correctly shown on this plat and that all monuments have been correctly placed as shown on this plat.

Certified by: J. E. Johnson 10460 8-18-83
 Registered Land Surveyor, Office of Surveying & Mapping, Reg. No. Date

I hereby certify that this plat was prepared by me or under my direct supervision and that I am a duly Licensed Land Surveyor under the Laws of the State of Minnesota and that all measurements are correctly shown on this plat and that all monuments have been correctly placed as shown on this plat.

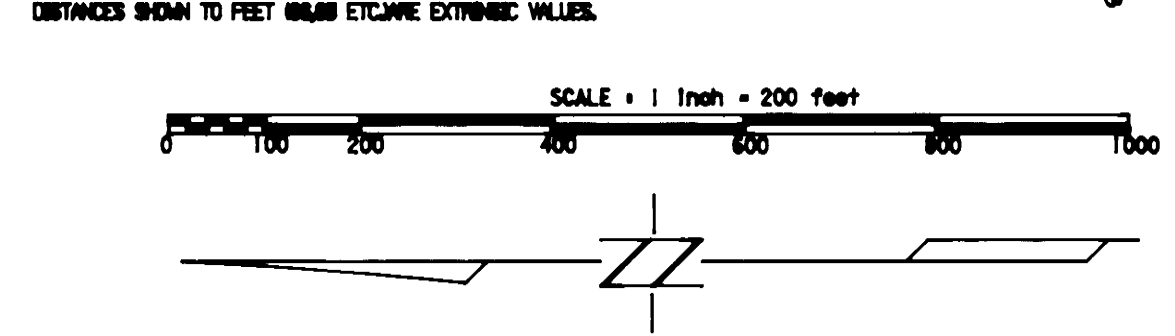
Certified by: M. J. R. M. 11327 8-22-83
 Registered Land Surveyor, M/DOT District Office, Reg. No. Date

- SURVEY STANDARDS**
- The plat values, amounts and distances, are based on the project control survey system.
 - The boundary monuments shown on the plat have been field checked for location. The standard deviation for the monument position is 0.1' PL.
 - The state plane coordinates shown on this monument are based on ties to national control monuments.
 - Copies of this plat have been filed at the County Recorder's Office and/or the County Surveyor's Office for the section corner monuments shown on this plat.
 - For details of this survey contact the Surveying and Mapping Section at the Minnesota Department of Transportation, ROCHESTER, Minnesota.

AZIMUTH ORIENTATION AND GRID CONVERSION
 Plat azimuths are oriented to Minnesota State Plane Coordinate System with 8 degrees 8 minutes 8 seconds being 1980 NORTH.
 Plat distances are ground lengths and can be converted to Minnesota State Plane Grid lengths by multiplying Plat distances by 0.9998734.

CONVENTIONAL SYMBOLS

Section Line	Building Removal Easement	B, R, E
Quarter Line	R/W Parcel Number	3
Section Line	Access Control	○
R/W Boundary	Access Opening	○
Existing D&T R/W Line	Cast Iron Monument or 2x2 D&T Iron Pipe with Aluminum Cap	○
Other Road R/W	3"/4 D&T Iron Pin	○
Reduced R/W	Other Iron Monument	○
Private Easement	Concrete or Stone Monument	○
Temporary Easement	R/W Boundary Corner	○



DOC. NO. 25-101
 OFFICE OF COUNTY RECORDER
 GOODHUE COUNTY, MINN.
 I HEREBY CERTIFY THAT THIS PLAT HAS BEEN FILED IN THIS OFFICE AT 10:00 O'CLOCK A.M. ON 8-22-83 PAGE 24
 Cass J. Johnson, County Recorder