

MINNESOTA DEPARTMENT OF TRANSPORTATION  
RIGHT OF WAY PLAT NO. 25-12

STATE PROJECT NO. 2511(60-21-24-4)  
IN THE SOUTH HALF OF SECTION 5, T. 109N., R. 18W.  
GOODHUE COUNTY, MINNESOTA

THE COMMISSIONER OF TRANSPORTATION IS HEREBY DESIGNATING THE DEFINITE  
LOCATION OF TRUNK HIGHWAY NO. 60 FROM THE WEST COUNTY LINE  
TO 2.0 MILE EAST

As shown on this plat prepared by the State of Minnesota Department of Transportation is hereby certified as the official plat of that portion of said T.H. 60 within the designated portion of Section 5 and the Commissioner's Order therefor, pursuant to Minnesota Statutes, section 161.16 subd. 2, section 160.14 subd. 1, section 160.085, and section 161.18.

Commissioner's Order No. Location Nature of Interest  
74313 PLATS 25-11 & 25-12 Definite location, width, access, temporary easement and building removal easement.

Recommended for Certification Certified

Leona M. Weaving  
Commissioner of Transportation  
1-3-89  
R.J. Dittman Date by E.E. O'Leary Date  
Director of Right of Way & Surveys Assistant Commissioner of Transportation

I hereby certify that this plat was prepared by me or under my direct supervision and that I am a duly Registered Land Surveyor under the Laws of the State of Minnesota, that this plat meets requirements of Minnesota Statutes, section 161.16, Subd. 2, section 160.14, Subd. 1, section 160.085, and section 161.18, that parcel ownerships are correctly described and delineated on the plat, and that the proposed right-of-way boundary lines are correctly designated on the plat.

Certified by Dennis M. Dardun 11989 1-3-89  
Registered Land Surveyor Reg. No. Date  
Office of Right of Way & Surveys

I hereby certify that this plat was surveyed by me or under my direct supervision and that I am a duly Registered Land Surveyor under the Laws of the State of Minnesota, that all measurements are correctly shown on this plat and that all monuments have been correctly placed as shown on this plat.

Certified by M. J. M. Jensen 11927 1-12-89  
Registered Land Surveyor Reg. No. Date  
MNDOT District Office

GOODHUE COUNTY CAST IRON MON.  
AT QUARTER CORNER

RIGHT OF WAY IN		AUDITOR'S SUBDIVISION OF S1/2SW1/4, SEC. 5				
PARCEL	OWNER	LOCATION	NET T.W. R/W	TEMPORARY EASEMENT	BUILDING EASEMENT	PERMANENT R/W INTEREST
208	JAMES R. ERHARDT	LOT 3 & 4	0.32	0.24		12-1-94 FEE
210	CARL O. FINNESGAARD	LOT 1 & 2	1.67	0.44		12-1-94 FEE
AUDITOR'S SUBDIVISION OF NW1/4SE1/4, SW1/4SE1/4, SE1/4SE1/4, & THE NE1/4SE1/4 OF SECTION 5						
315	HAROLD R. NIELSEN	LOTS 3, 8 & 10 NE1/4SE1/4	0.44	0.06		12-1-94 FEE
RIGHT OF WAY IN SECTION 5						
315A	ELMER M. BERG	NE1/4SE1/4	0.98			FEE
RIGHT OF WAY IN: A AUDITOR'S SUBDIVISION OF S1/2SW1/4, AND B AUDITOR'S SUBDIVISION OF NW1/4SE1/4, SE1/4SE1/4, & SW1/4 SECTION 5						
312	GOL. NORWEGIAN EVANGELICAL LUTHERAN CONGREGATION	LOTS 4 & 5 LOTS 4, 5 & 6	1.29			FEE

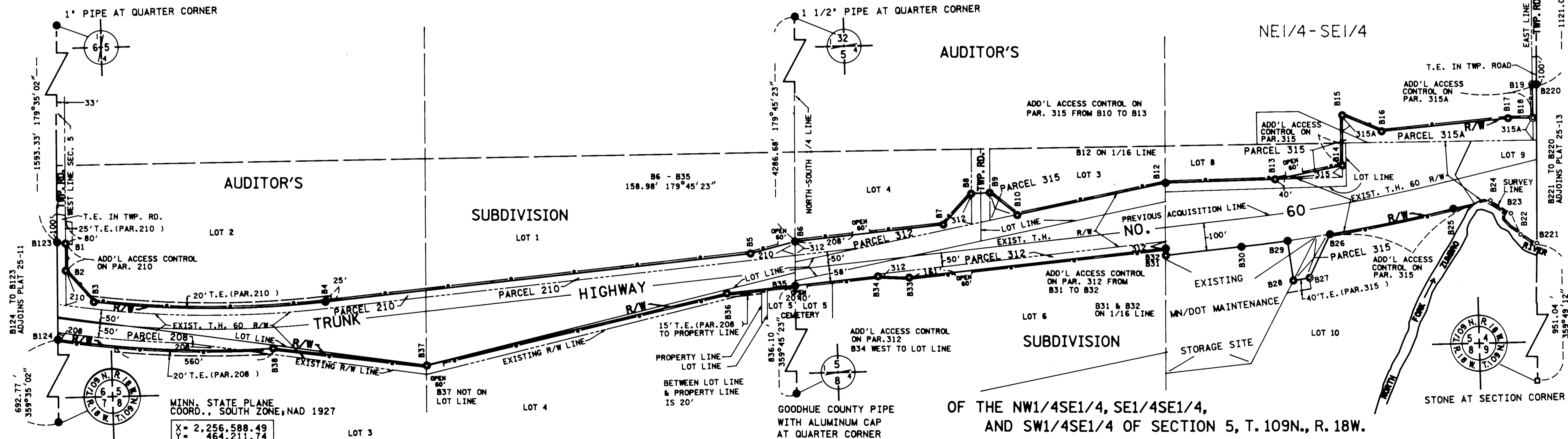
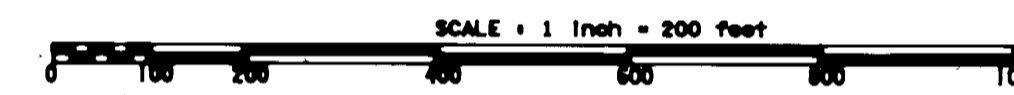
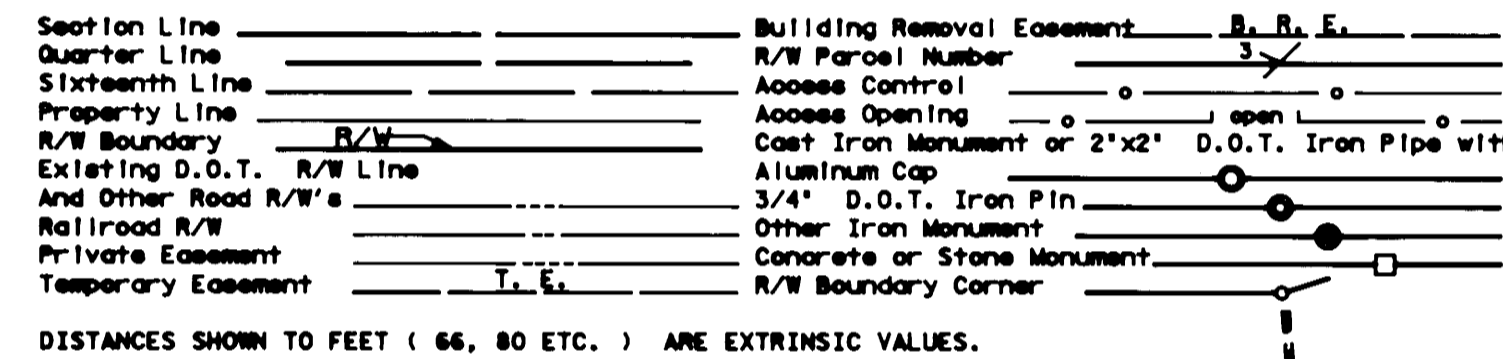
PLAT BOUNDARY DATA		
POINT	DISTANCE	AZIMUTH
B123-B1	30.39'	98°50'02"
B1-B2	97.15'	179°35'02"
B2-B3	150.47'	138°22'50"
B3-B4	412°59'28" R	3640.09'
C	823.57' CAZ	89°53'35" ARC 825.34'
B4-B5	1524.90'	83°23'51"
B5-B6	163.78'	74°37'02"
B6-B7	530.41'	83°23'51"
B7-B8	149.07'	41°35'06"
B8-B9	66.08'	87°00'13"
B9-B10	125.79'	128°44'39"
B10-B11	540.70'	77°42'57"
B11-B12	389.40'	88°07'12"
B12-B13	244.94'	78°10'31"
B13-B14	180.00'	359°49'12"
B14-B15	151.06'	112°23'58"
B15-B16	451.77'	83°56'19"
B16-B17	88.05'	89°00'05"
B17-B18	120.00'	359°04'40"
B18-B19	14.65'	89°00'05"
B19-B220	570.02'	179°49'12"
B220-B221	65.89'	297°46'52"
B221-B22	83.16'	335°47'53"
B22-B23	88.56'	303°50'51"
B23-B24	135.00'	255°52'46"
B24-B25	A 4°23'43" R	5841.07'
B25-B26	C 447.98' CAZ	258°04'37" ARC 448.09'
B26-B27	172.22'	204°50'54"
B27-B28	58.64'	280°05'12"
B28-B29	144.04'	351°46'18"
B29-B30	A 1°37'33" R	5841.07'
B30-B31	C 165.73' CAZ	262°35'05" ARC 165.74'

PLAT BOUNDARY DATA		
POINT	DISTANCE	AZIMUTH
B31-B32	25.16'	359°47'18"
B32-B33	919.53'	263°23'51"
B33-B34	111.31'	272°10'58"
B34-B35	285.75'	263°23'51"
B35-B36	244.25'	263°23'51"
B36-B37	1099.97'	256°21'21"
B37-B38	550.94'	276°19'58"
B38-B124	A 11°36'29" R	3790.09'
C	766.56' CAZ	272°16'58" ARC 767.87'
B124-B123	349.22'	359°35'02"

SURVEY STANDARDS

- The plat values, azimuths, and distances are based on the project control survey system.
- The boundary monuments shown on this plat have been field checked for location. The standard deviation for the monument position is 0.1 feet.
- The state plane coordinates shown on one monument are based on ties to national control monuments.
- Certification of location have been filed at the County Recorder's Office and/or the County Engineer's Office for the section corner monuments shown on this plat.
- For details of this survey contact the Surveying and Mapping Section at the Minnesota Department of Transportation  
ROCHESTER  
Name of District

CONVENTIONAL SYMBOLS



MINN. STATE PLANE COORD., SOUTH ZONE, NAD 1927  
X = 2,256,588.49  
Y = 464,211.74

AZIMUTH ORIENTATION AND GRID CONVERSION  
Plat azimuths are oriented to Minnesota State Plane Coordinate System with 0 degrees 0 minutes 0 seconds being "GRID NORTH".  
Plat distances are ground lengths and can be converted to Minnesota State Plane Grid lengths by multiplying Plat distances by 0.9998719.

DOC. NO. 325358  
OFFICE OF COUNTY RECORDER  
GOODHUE COUNTY, MINN.  
I HEREBY CERTIFY THAT THIS PLAT  
HAS BEEN FILED IN THIS OFFICE  
AT 11:00 A.M. ON  
1-3-89  
COUNTY RECORDER