

MINNESOTA DEPARTMENT OF TRANSPORTATION
RIGHT OF WAY PLAT NO. 25-120

CONTROL SECTION NO. 2519 (246=320) 901

IN THE SOUTH HALF OF THE SOUTH HALF OF SECTION 7, T. 110 N., R. 18 W.,
IN THE NORTH HALF OF THE NORTH HALF OF SECTION 18, T. 110 N., R. 18 W.,
IN THE SOUTHWEST QUARTER OF SECTION 8, T. 110 N., R. 18 W.,
IN THE NORTHWEST QUARTER OF THE NORTHWEST QUARTER OF SECTION 17, T. 110 N., R. 18 W.,
GOODHUE COUNTY, MINNESOTA

The Commissioner of Transportation is hereby certifying this plat, designating the definite location of, and assigning the Commissioner's Order for; those portions of Trunk Highway No. 246 as shown on this plat, pursuant to Minnesota Statutes, Section 160.085, Section 160.14 subd. 1, Section 161.16 subd. 2, and Section 161.18.

It is further ordered that the Commissioner of Transportation's Orders covering any existing right of way, outside of the plat boundary, shall remain in full force and effect until such time the existing right of way Orders are rescinded.

It is further ordered that it is necessary to acquire all trees, shrubs, grass and herbage within the right of way of said Trunk Highway, and to keep and have the exclusive control of the same.

Commissioner's Order No. 100566 Location Plat No. 25-120 Nature of Interest: Definite location, width, and temporary easement

Certified: Nancy Daubenberger Commissioner of Transportation by Geoff P. ... Assistant Director, Office of Land Management

4-18-24 Date

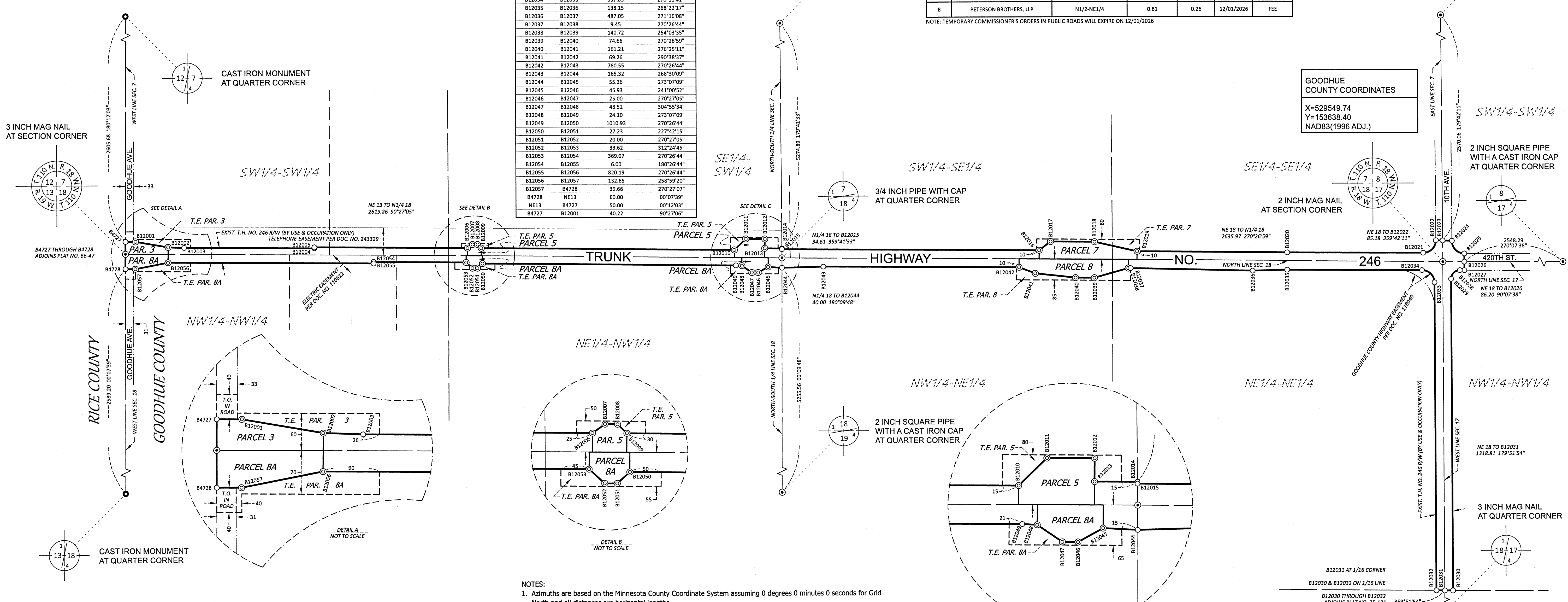
I hereby certify that this plat was surveyed and prepared by me or under my direct supervision and that I am a duly Licensed Land Surveyor under the Laws of the State of Minnesota; that all measurements are correctly shown on this plat; that the parcel(s) are correctly delineated on this plat; that the proposed right of way boundary lines are correctly designated on this plat; that Certificates of Location for the Public Land Survey Corner monuments as shown on this plat have been or will be filed in accordance with Minnesota Statute 381.12; and that this plat meets the requirements of Minnesota Statutes, Section 160.085, Section 160.14 subd. 1, Section 161.16 subd. 2, and Section 161.18.

Certified: Jordan B. Kürth MnDOT District Office License No. 48717 Date April 22, 2024

PLAT BOUNDARY DATA table with columns: FROM, TO, DISTANCE(FT), AZIMUTH. Lists boundary points from B12001 to B12022 with corresponding measurements.

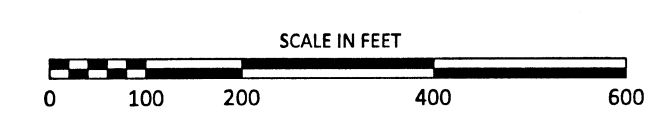
RIGHT OF WAY IN SECTION 7 and RIGHT OF WAY IN SECTION 18 tables. Columns: PARCEL, OWNER, LOCATION, NEW T.H. R/W, ACRES MORE OR LESS, TEMPORARY EASEMENT, PERMANENT R/W INTEREST.

GOODHUE COUNTY COORDINATES X=529549.74 Y=153638.40 NAD83(1996 ADJ.)



CONVENTIONAL SYMBOLS table defining symbols for Cast Iron Monument, Section Line, Quarter Line, Parcel Line, etc.

- NOTES: 1. Azimuths are based on the Minnesota County Coordinate System... 2. Distances are shown in U.S. Survey Feet... 3. Boundary monuments will be set following substantial completion of the project... 4. Positional tolerance for boundary monuments... 5. Any Public Land Survey Corner monument... 6. Owners names are for reference only... 7. All parcels shown on this plat... 8. Temporary Order (T.O.) gives the State of Minnesota all rights... 9. For details of the survey contact the Minnesota Department of Transportation Rochester office.



OFFICE OF COUNTY RECORDER GOODHUE COUNTY, MINNESOTA I HEREBY CERTIFY THAT THIS PLAT WAS FILED IN THIS OFFICE FOR PUBLIC RECORD ON THIS DAY OF April 2024 AT 1:13 PM AND WAS DUPLICATED AS DOCUMENT NO. 48717 COUNTY RECORDER