

MINNESOTA DEPARTMENT OF TRANSPORTATION
RIGHT OF WAY PLAT NO. 25-124

CONTROL SECTION NO. 2519 (246=320) 901

IN THE SOUTH HALF OF THE SOUTHEAST QUARTER OF SECTION 20, T. 110 N., R. 18 W.,
IN THE NORTH HALF OF THE NORTHWEST QUARTER OF SECTION 29, T. 110 N., R. 18 W.,
GOODHUE COUNTY, MINNESOTA

The Commissioner of Transportation is hereby certifying this plat, designating the definite location of, and assigning the Commissioner's Order for; those portions of Trunk Highway No. 246 as shown on this plat, pursuant to Minnesota Statutes, Section 160.085, Section 160.14 subd. 1, Section 161.16 subd. 2, and Section 161.18.

It is further ordered that the Commissioner of Transportation's Orders covering any existing right of way, outside of the plat boundary, shall remain in full force and effect until such time the existing right of way Orders are rescinded.

It is further ordered that it is necessary to acquire all trees, shrubs, grass and herbage within the right of way of said Trunk Highway, and to keep and have the exclusive control of the same.

Commissioner's Order No. 100542 Location Plat No. 25-124 Nature of Interest: Definite location, width, and temporary easement

Certified: Nancy Daubenberger Commissioner of Transportation

by Geoff Blumer, C.S. 4-8-24 Date Assistant Director, Office of Land Management

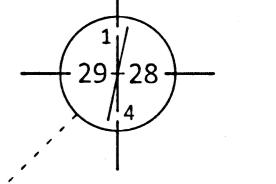
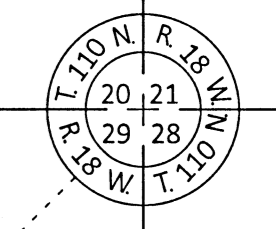
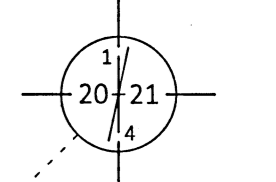
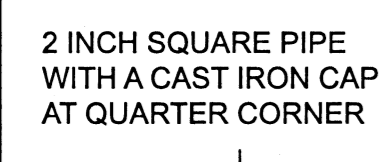
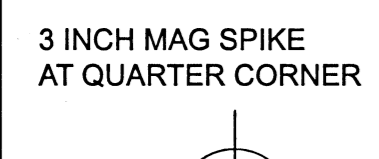
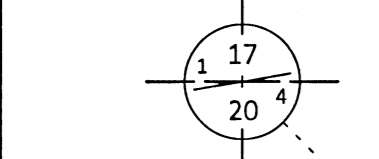
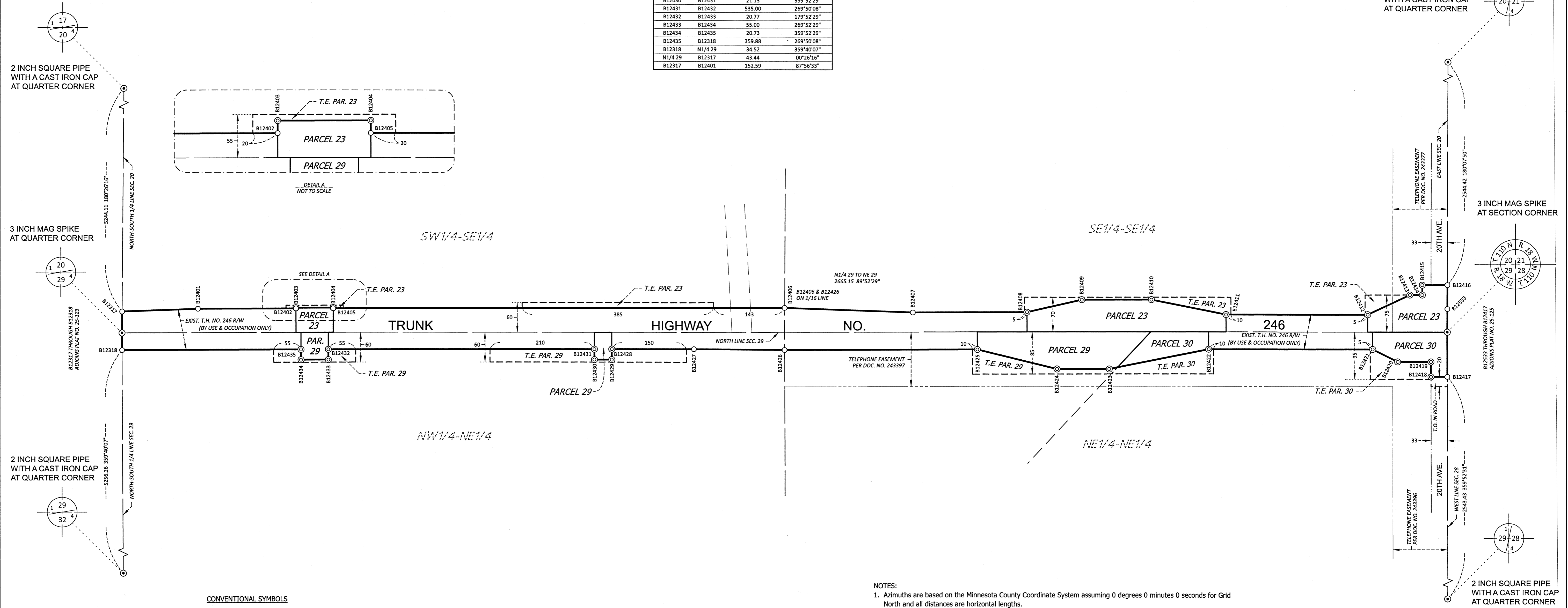
I hereby certify that this plat was surveyed and prepared by me or under my direct supervision and that I am a duly Licensed Land Surveyor under the Laws of the State of Minnesota; that all measurements are correctly shown on this plat; that the parcel(s) are correctly delineated on this plat; that the proposed right of way boundary lines are correctly designated on this plat; that Certificates of Location for the Public Land Survey Corner monuments as shown on this plat have been or will be filed in accordance with Minnesota Statute 381.12; and that this plat meets the requirements of Minnesota Statutes, Section 160.085, Section 160.14 subd. 1, Section 161.16 subd. 2, and Section 161.18.

Certified: by Jordan B. Kurth 48717 License No. APRIL 10, 2024 Date MnDOT District Office

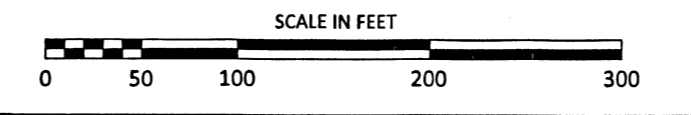
PLAT BOUNDARY DATA table with columns: FROM, TO, DISTANCE(FT), AZIMUTH. Lists boundary points B12401 through B12317 with their respective distances and azimuths.

RIGHT OF WAY IN SECTION 20 and RIGHT OF WAY IN SECTION 29 tables. Columns include PARCEL, OWNER, LOCATION, NEW T.H. R/W, ACRES MORE OR LESS, TEMPORARY EASEMENT (ACRES MORE OR LESS, EXPIRES), PERMANENT R/W INTEREST.

GOODHUE COUNTY COORDINATES X=534849.41 Y=145702.33 NAD83(1996 ADJ.)



- CONVENTIONAL SYMBOLS: Cast Iron Monument, 2" x 2" D.O.T. Iron Tube with Cap, 3/4" Solid Iron Monument, Concrete or Stone Monument, Other Iron Monument, Boundary Corner, Section Line, Quarter Line, Sixteenth Line, Parcel Line, R/W Boundary, Existing D.O.T. R/W, City/County/Township R/W, Railroad R/W, Centerline/Acquisition Line, Temporary Easement, Temporary Orders in Road, Property Line, Underlying Line, Survey Line, Existing Access Control, Access Control to be Acquired, Private Easement, D.O.T. Specific Interest.



- NOTES: 1. Azimuths are based on the Minnesota County Coordinate System assuming 0 degrees 0 minutes 0 seconds for Grid North and all distances are horizontal lengths. 2. Distances are shown in U.S. Survey Feet. 3. Boundary monuments will be set following substantial completion of the project. 4. Positional tolerance for boundary monuments as shown on this plat are plus or minus 0.10 feet. 5. Any Public Land Survey Corner monument shown on this plat, if obliterated by construction, will be perpetuated per Minnesota Statute 160.15. 6. Owners names are for reference only and are subject to change. 7. All parcels shown on this plat may or may not have been acquired by the State of Minnesota. Check pertinent documents for each parcel to verify. 8. Temporary Order (T.O.) gives the State of Minnesota all rights, title, easements, and appurtenances that are held by a political subdivision until the date said Temporary Order expires. 9. For details of the survey contact the Minnesota Department of Transportation Rochester office.

OFFICE OF COUNTY RECORDER GOODHUE COUNTY, MINNESOTA I HEREBY CERTIFY THAT THIS PLAT WAS FILED IN THIS OFFICE FOR PUBLIC RECORD ON THIS 15 DAY OF APRIL 2024 AT 9:32 AM AND WAS DULY RECORDED AS DOCUMENT NO. 198517 COUNTY RECORDER