

MINNESOTA DEPARTMENT OF TRANSPORTATION RIGHT OF WAY PLAT NO. 25-13

STATE PROJECT NO. 2511(60=21-24-4)
IN THE SOUTHWEST QUARTER OF
SECTION 4, T. 109 N., R. 18 W.,
GOODHUE COUNTY, MINNESOTA

THE COMMISSIONER OF TRANSPORTATION IS HEREBY DESIGNATING THE DEFINITE
LOCATION OF TRUNK HIGHWAY NO. 60 FROM C.S.A.H. NO. 12 IN KENYON
TO 0.5 MILE WEST.

As shown on this plat prepared by the State of Minnesota Department of Transportation is hereby certified as
the official plat of that portion of said T.H. 60 within the designated portion of Section 4
and the Commissioner's Order therefor pursuant to Minnesota Statutes, section 161.16 subd. 2, section
160.14 subd. 1, section 160.085, and section 161.18.

Commissioner's Order No.	Location	Nature of Interest
74314	PLAT 25-13	Definite location, width, access, temporary ease- ment and building removal easement.

Recommended for Certification: Certified

[Signature] 11-10-88 Leonard W. Leving
County Engineer of Transportation
by *[Signature]* 11-15-88
R.J. Dinnien Date by E.E. Ofshead Date
Director of Right of Way & Surveys Assistant Commissioner of Transportation

I hereby certify that this plat was prepared by me or under my direct supervision and that I am a duly
Registered Land Surveyor under the Laws of the State of Minnesota, that this plat meets requirements
of Minnesota Statutes, section 161.16, Subd. 2, section 160.14, Subd. 1, section 160.085, and section 161.18; that
parcel ownerships are correctly described and delineated on the plat, and that the proposed right-of-way
boundary lines are correctly delineated on the plat.

Certified by *[Signature]* 10460 11-9-88
Registered Land Surveyor Reg. No. Date
Office of Right of Way & Surveys

I hereby certify that this plat was surveyed by me or under my direct supervision and that I am a duly
Registered Land Surveyor under the Laws of the State of Minnesota, that all measurements are correctly
shown on this plat, and that all monuments have been correctly placed as shown on this plat.

Certified by *[Signature]* 11527 11-1-88
Registered Land Surveyor Reg. No. Date
MnDOT District Office

CONVENTIONAL SYMBOLS

Section Line	Building Removal Easement	B. R. E.
Quarter Line	R/W Parcel Number	3
Sixteenth Line	Access Control	
Property Line	Access Opening	open
R/W Boundary	Cast Iron Monument or 2"x2" D.O.T. Iron Pipe with	
Existing D.O.T. R/W Line	Aluminum Cap	
And Other Road R/W's	3/4" D.O.T. Iron Pin	
Railroad R/W	Other Iron Monument	
Private Easement	Concrete or Stone Monument	
Temporary Easement	R/W Boundary Corner	

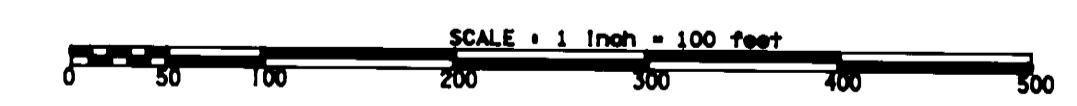
DISTANCES SHOWN TO FEET (66, 80 ETC.) ARE EXTRINSIC VALUES.

AZIMUTH ORIENTATION AND GRID CONVERSION

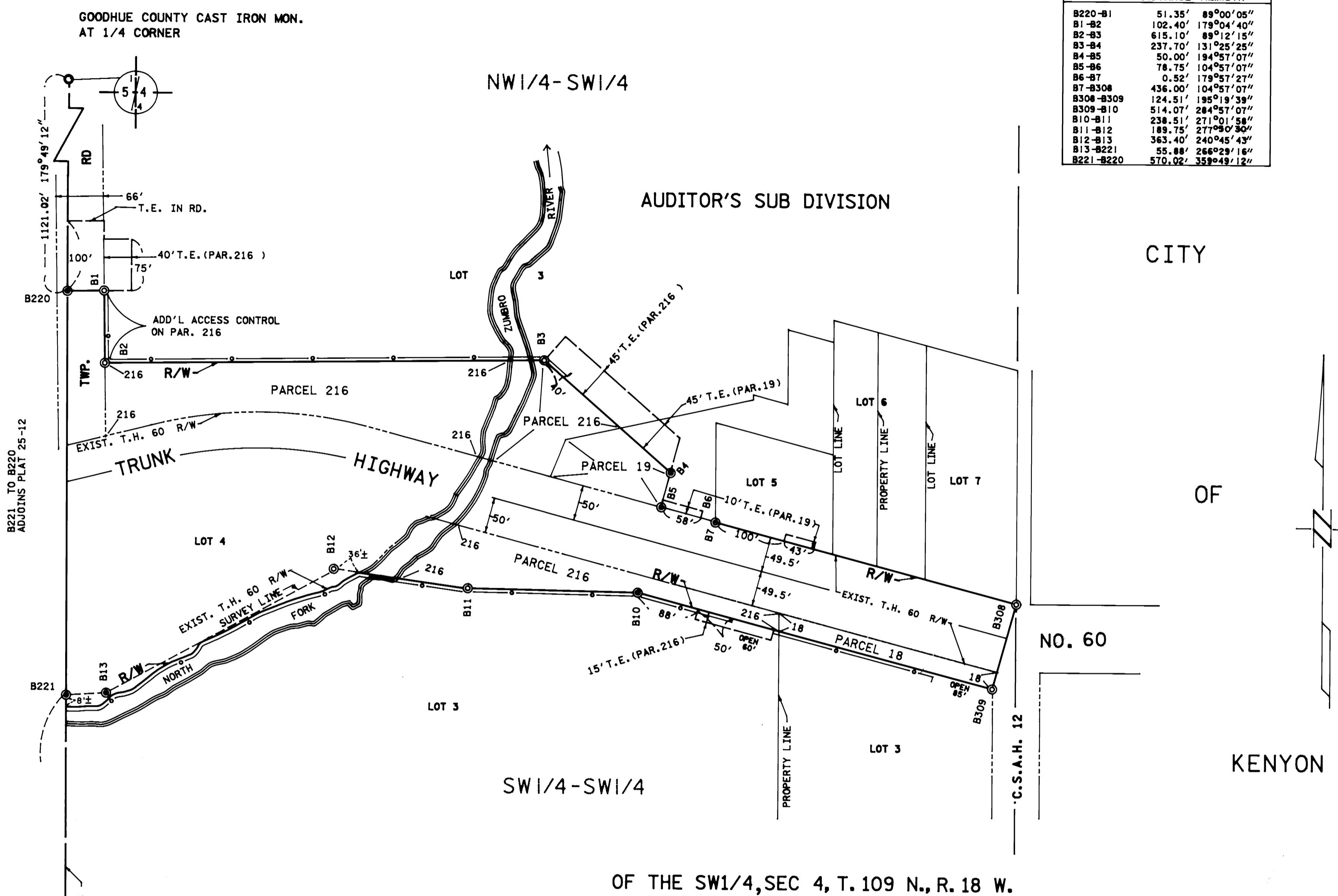
Plat azimuths are oriented to Minnesota State Plane Coordinate System with 0 degree
0 minutes 0 seconds being 'GRID NORTH'.
Plat distances are ground lengths and can be converted to Minnesota State Plane Grid
lengths by multiplying Plat distances by 0.9998719.

SURVEY STANDARDS

- The plat values, azimuths, and distances are based on the project control survey system.
- The boundary monuments shown on this plat have been field checked for location. The standard deviation for the monument position is 0.1 feet.
- The state plane coordinates shown on one monument are based on ties to national control monuments.
- Certificates of Location have been filed at the County Recorder's Office and/or the County Engineer's Office for the section corner monuments shown on this plat.
- For details of this survey contact the Surveying and Mapping Section at the Minnesota Department of Transportation, ROCHESTER, Name of District



PLAT BOUNDARY DATA		
POINT	DISTANCE	AZIMUTH
B220-B1	51.35'	88°00'05"
B1-B2	102.40'	178°04'40"
B2-B3	615.10'	89°12'15"
B3-B4	237.70'	131°25'25"
B4-B5	50.00'	194°57'07"
B5-B6	78.75'	104°57'07"
B6-B7	0.52'	179°57'27"
B7-B308	436.00'	104°57'07"
B308-B309	124.51'	195°19'39"
B309-B10	514.07'	284°57'07"
B10-B11	238.51'	271°01'58"
B11-B12	189.75'	277°00'30"
B12-B13	363.40'	240°45'43"
B13-B221	55.88'	266°29'16"
B221-B220	570.02'	359°49'12"



RIGHT OF WAY IN AUDITOR'S SUB DIVISION OF THE SW1/4 SECTION 4, T. 109 N., R. 18 W.							
PARCEL	OWNER	LOCATION	TOWN'S CERTIFICATE NO.	NEW		EASEMENT EXPIRES ON	PERMANENT R/W INTEREST
				T.H. R/W	TEMPORARY EASEMENT ACRES (MORE OR LESS)		
216	RUBEN MAISEL	LOT 3		1.97	0.27	12-1-94	FEE
18	CHARLES E. ROGNMOE	LOT 3		0.18			FEE
19	VIRGIL A. HELGESON	LOTS 3,5,6 (W1/2 - SW1/4)		0.26	0.09	12-1-94	FEE

MINN. STATE PLANE
COORD., SOUTH ZONE
X = 2,261,848.23
Y = 464,305.93

6'X7' LIMESTONE
AT SECTION CORNER

DOC. NO. 321258
OFFICE OF COUNTY RECORDER
GOODHUE COUNTY, MINN.
I HEREBY CERTIFY THAT THIS PLAT
HAS BEEN FILED IN THIS OFFICE
AT 2:00 P.M. ON 11/15/88
BOOK 138 PAGE 26
COUNTY RECORDER

PLAT NO. 25-13
S.P. 2511(60=21-24-4)