

MINNESOTA DEPARTMENT OF TRANSPORTATION RIGHT OF WAY PLAT NO. 25-15

STATE PROJECT NO. 2505(52-20-34-2)
IN THE WEST HALF OF SECTION 17, T. 109 N., R. 15 W., AND
IN THE EAST HALF OF SECTION 18, T. 109 N., R. 15 W.,
GOODHUE COUNTY, MINNESOTA

THE COMMISSIONER OF TRANSPORTATION IS HEREBY DESIGNATING THE DEFINITE
LOCATION OF TRUNK HIGHWAY NO. 52 FROM THE SOUTH JUNCTION OF TRUNK
HIGHWAY NO. 60 TO THE SOUTH GOODHUE COUNTY LINE.

As shown on this plat prepared by the State of Minnesota Department of Transportation is hereby certified as
the official plat of that portion of said T.H. 52 within the designated portion of Sections 17 & 18
and the Commissioner's Order therefor, pursuant to Minnesota Statutes, section 161.16 subd. 2, section
160.14 Subd. 1, section 160.085, and section 161.18.

Commissioner's Order No.	Location	Nature of Interest
75590	PLATS 25-15 THRU 25-20	Definite location, width, access, temporary ease- ment and building removal easement.

Recommended for Certification Certified

CONVENTIONAL SYMBOLS

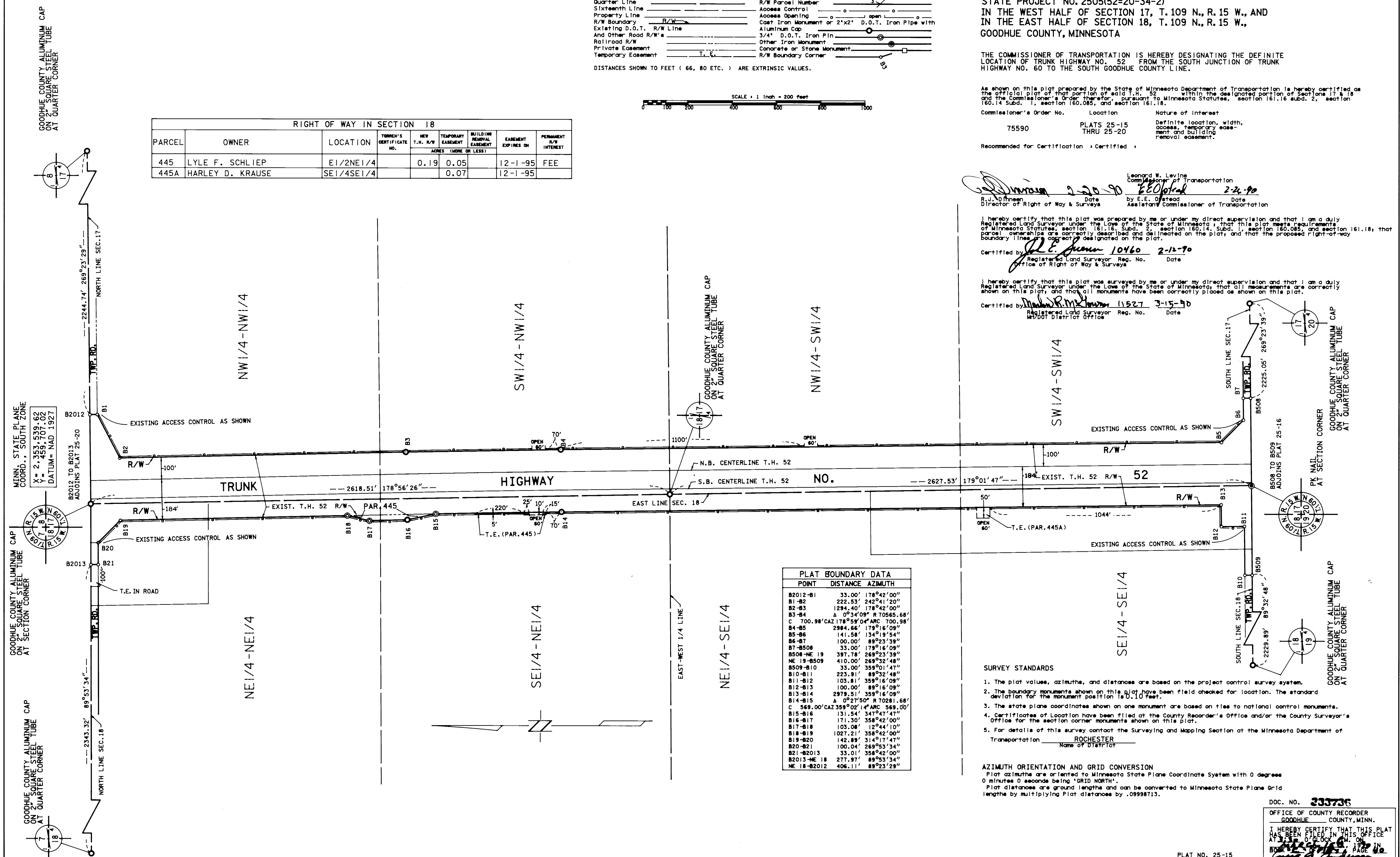
Section Line	Building Removal Easement	B.R.E.
Quarter Line	R/W Parcel Number	3
Sixteenth Line	Access Control	○
Property Line	Access Opening	○
R/W Boundary	Cast Iron Monument or 2"x2" D.O.T. Iron Pipe with	○
Existing D.O.T. R/W Line	Aluminum Cap	○
And Other Road R/W's	3/4" D.O.T. Iron Pin	○
Railroad R/W	Other Iron Monument	○
Private Easement	Concrete or Stone Monument	○
Temporary Easement	R/W Boundary Corner	○

DISTANCES SHOWN TO FEET (66, 80 ETC.) ARE EXTRINSIC VALUES.



RIGHT OF WAY IN SECTION 18

PARCEL	OWNER	LOCATION	TORREN'S CERTIFICATE NO.	NEW T.H. R/W ACRES (MORE OR LESS)	TEMPORARY EASEMENT	BUILDING REMOVAL EASEMENT	EASEMENT EXPIRES ON	PERMANENT R/W INTEREST
445	LYLE F. SCHLIEP	E1/2NE1/4		0.19	0.05		12-1-95	FEE
445A	HARLEY D. KRAUSE	SE1/4SE1/4			0.07		12-1-95	



PLAT BOUNDARY DATA

POINT	DISTANCE	AZIMUTH
B2012-B1	33.00'	178°42'00"
B1-B2	222.53'	242°41'20"
B2-B3	1294.40'	178°42'00"
B3-B4	0°34'09"	R 70565.68'
B4-B5	100.98' CAZ 119°29'04" ARC 700.98'	
B5-B6	2984.66'	178°16'09"
B6-B7	141.58'	134°19'54"
B7-B508	100.00'	89°23'39"
B7-B508	33.00'	178°16'09"
B508-NE 19	397.78'	269°23'39"
NE 19-B509	410.00'	269°32'48"
B509-B10	33.00'	359°01'47"
B10-B11	223.91'	89°32'48"
B11-B12	103.81'	359°16'09"
B12-B13	100.00'	89°16'09"
B13-B14	2979.51'	359°16'09"
B14-B15	0°27'50"	R 70281.68'
C	569.00' CAZ 359°02'14" ARC 569.00'	
B15-B16	131.54'	347°47'47"
B16-B17	171.30'	358°42'00"
B17-B18	103.08'	12°44'10"
B18-B19	1027.21'	358°42'00"
B19-B20	142.89'	314°17'47"
B20-B21	100.04'	269°53'34"
B21-B2013	33.01'	358°42'00"
B2013-NE 18	277.97'	89°53'34"
NE 18-B2012	406.11'	89°23'29"

I hereby certify that this plat was prepared by me or under my direct supervision and that I am a duly
Registered Land Surveyor under the Laws of the State of Minnesota, that this plat meets requirements
of Minnesota Statutes, section 161.16, Subd. 2, section 160.14, Subd. 1, section 160.085, and section 161.18; that
parcel ownerships are correctly described and delineated on the plat, and that the proposed right-of-way
boundary lines are correct, designated on the plat.

Certified by *[Signature]* 10460 2-12-90
Registered Land Surveyor Reg. No. Date
Office of Right of Way & Surveys

I hereby certify that this plat was surveyed by me or under my direct supervision and that I am a duly
Registered Land Surveyor under the Laws of the State of Minnesota, that all measurements are correctly
shown on this plat, and that all monuments have been correctly placed as shown on this plat.

Certified by *[Signature]* 11527 3-15-90
Registered Land Surveyor Reg. No. Date
21001 District Office

- ### SURVEY STANDARDS
- The plat values, azimuths, and distances are based on the project control survey system.
 - The boundary monuments shown on this plat have been field checked for location. The standard deviation for the monument position is 0.10 feet.
 - The state plane coordinates shown on one monument are based on ties to national control monuments.
 - Certification of Location have been filed at the County Recorder's Office and/or the County Surveyor's Office for the section corner monuments shown on this plat.
 - For details of this survey contact the Surveying and Mapping Section at the Minnesota Department of Transportation, ROCHESTER, Minnesota.

AZIMUTH ORIENTATION AND GRID CONVERSION

Plat azimuths are oriented to Minnesota State Plane Coordinate System with 0 degree
0 minutes 0 seconds being GRID NORTH.
Plat distances are ground lengths and can be converted to Minnesota State Plane Grid
lengths by multiplying Plat distances by .9998713.

DOC. NO. **233736**

OFFICE OF COUNTY RECORDER
GOODHUE COUNTY, MINN.

I HEREBY CERTIFY THAT THIS PLAT
HAS BEEN FILED IN THIS OFFICE
AT 2:12 P.M. ON
BUDGETED PAGE 10
COUNTY RECORDER