

MINNESOTA DEPARTMENT OF TRANSPORTATION RIGHT OF WAY PLAT NO. 25-16

STATE PROJECT NO. 2505(52-20-34-2)
IN THE EAST HALF OF SECTION 19, T. 109 N., R. 15 W., AND
IN THE WEST HALF OF SECTION 20, T. 109 N., R. 15 W.,
GOODHUE COUNTY, MINNESOTA

THE COMMISSIONER OF TRANSPORTATION IS HEREBY DESIGNATING THE DEFINITE
LOCATION OF TRUNK HIGHWAY NO. 52 FROM THE SOUTH JUNCTION OF TRUNK
HIGHWAY NO. 60 TO THE SOUTH GOODHUE COUNTY LINE.

As shown on this plat prepared by the State of Minnesota Department of Transportation is hereby certified as
the official plat of that portion of said T.H. 52 within the designated portion of Sections 19 & 20
and the Commissioner's Order therefor, pursuant to Minnesota Statutes, section 161.16 subd. 2, section
160.14 subd. 1, section 160.085, and section 161.18.

Commissioner's Order No.	Location	Nature of Interest
75590	PLATS 25-15 THRU 25-20	Definite location, width, access, temporary ease- ment and building removal easement.

Recommended for Certification: Certified

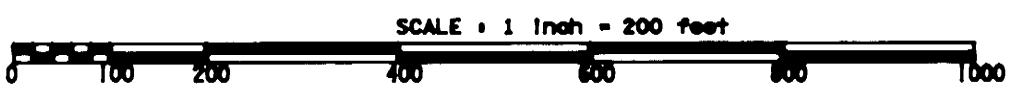
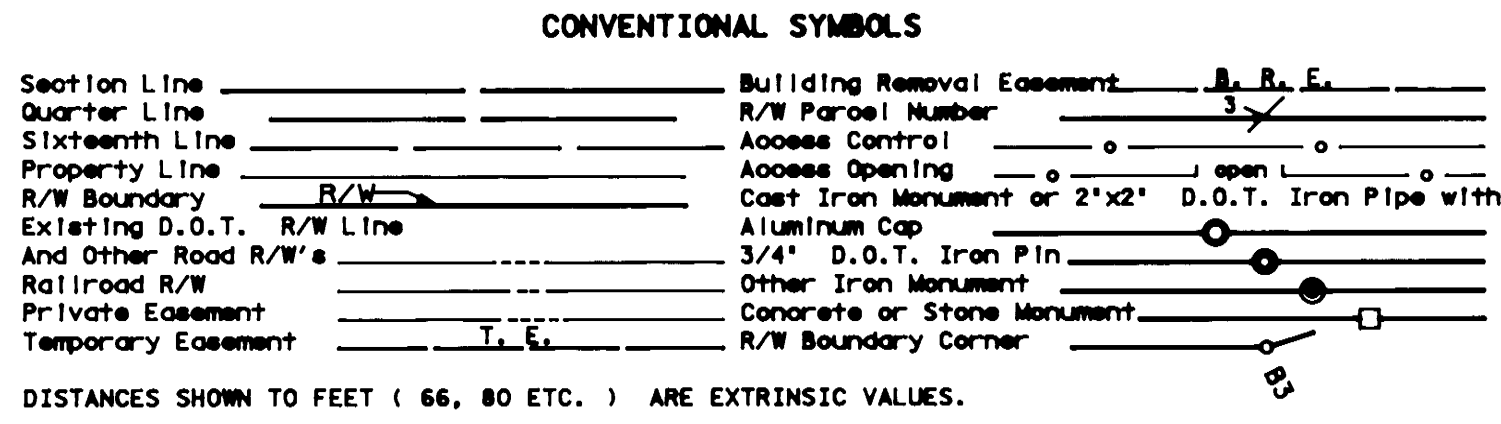
Leonard J. Levine
Commissioner of Transportation
by E.E. O'Keefe
Assistant Commissioner of Transportation

I hereby certify that this plat was prepared by me or under my direct supervision and that I am a duly
Registered Land Surveyor under the Law of the State of Minnesota, that this plat meets requirements
of Minnesota Statutes, section 161.16, Subd. 2, section 160.14, Subd. 1, section 160.085, and section 161.18, that
parcel ownerships are correctly described and delineated on the plat, and that the proposed right-of-way
boundary lines are properly designated on the plat.

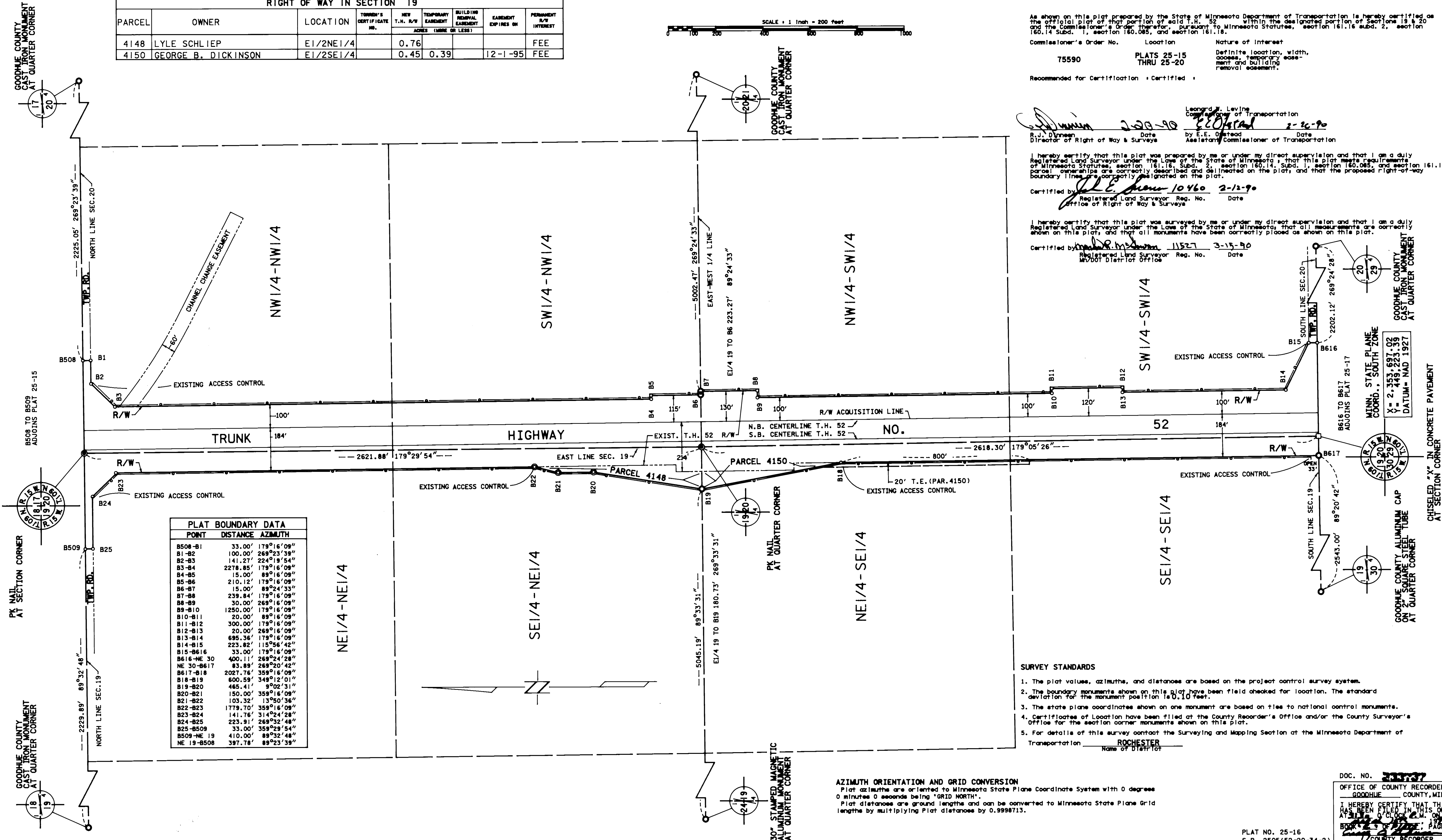
Certified by J. E. Howe 10460 2-12-90
Registered Land Surveyor Reg. No. Date
Office of Right of Way & Surveys

I hereby certify that this plat was surveyed by me or under my direct supervision and that I am a duly
Registered Land Surveyor under the Law of the State of Minnesota, that all measurements are correctly
shown on this plat, and that all monuments have been correctly placed as shown on this plat.

Certified by W. D. Johnson 11527 3-15-90
Registered Land Surveyor Reg. No. Date
MNDOT District Office



PARCEL	OWNER	LOCATION	TOWN'S CERTIFICATE NO.	NEW T.H. R/W	TEMPORARY EASEMENT ACRES (MORE OR LESS)	BUILDING REMOVAL EASEMENT	EASEMENT EXPIRES ON	PERMANENT R/W INTEREST
4148	LYLE SCHLIEP	E1/2NE1/4		0.76				FEE
4150	GEORGE B. DICKINSON	E1/2SE1/4		0.45	0.39		12-1-95	FEE



POINT	DISTANCE	AZIMUTH
B508-B1	33.00'	179°16'09"
B1-B2	100.00'	269°23'39"
B2-B3	141.27'	224°19'54"
B3-B4	2278.85'	179°16'09"
B4-B5	15.00'	89°16'09"
B5-B6	210.12'	179°16'09"
B6-B7	15.00'	89°24'33"
B7-B8	239.84'	179°16'09"
B8-B9	30.00'	269°16'09"
B9-B10	1250.00'	179°16'09"
B10-B11	20.00'	89°16'09"
B11-B12	300.00'	179°16'09"
B12-B13	20.00'	269°16'09"
B13-B14	695.36'	179°16'09"
B14-B15	223.82'	115°56'42"
B15-B616	33.00'	179°16'09"
B616-NE 30	400.11'	269°24'28"
NE 30-B617	83.89'	269°20'42"
B617-B18	2027.75'	359°16'09"
B18-B19	600.59'	349°12'01"
B19-B20	465.41'	9°02'31"
B20-B21	150.00'	359°16'09"
B21-B22	103.32'	13°50'36"
B22-B23	1779.70'	359°16'09"
B23-B24	141.76'	314°24'28"
B24-B25	223.91'	269°32'48"
B25-B509	33.00'	359°29'54"
B509-NE 19	410.00'	89°32'48"
NE 19-B508	397.78'	89°23'39"

AZIMUTH ORIENTATION AND GRID CONVERSION
Plat azimuths are oriented to Minnesota State Plane Coordinate System with 0 degree
0 minutes 0 seconds being "GRID NORTH".
Plat distances are ground lengths and can be converted to Minnesota State Plane Grid
lengths by multiplying Plat distances by 0.9998713.

- SURVEY STANDARDS**
- The plat values, azimuths, and distances are based on the project control survey system.
 - The boundary monuments shown on this plat have been field checked for location. The standard deviation for the monument position is 0.10 feet.
 - The state plane coordinates shown on one monument are based on ties to national control monuments.
 - Certificates of Location have been filed at the County Recorder's Office and/or the County Surveyor's Office for the section corner monuments shown on this plat.
 - For details of this survey contact the Surveying and Mapping Section at the Minnesota Department of Transportation, ROCHESTER, Name of District

DOC. NO. 2505(52-20-34-2)
OFFICE OF COUNTY RECORDER
GOODHUE COUNTY, MINN.
I HEREBY CERTIFY THAT THIS PLAT
HAS BEEN FILED IN THIS OFFICE
AT 11:00 A.M. ON
MAY 13, 1990
COUNTY RECORDER

PLAT NO. 25-16
S.P. 2505(52-20-34-2)