

MINNESOTA DEPARTMENT OF TRANSPORTATION RIGHT OF WAY PLAT NO. 25-18

STATE PROJECT NO. 2505(52-20-36)
IN SECTION 33, T. 109 N., R. 15 W.,
GOODHUE COUNTY, MINNESOTA

THE COMMISSIONER OF TRANSPORTATION IS HEREBY DESIGNATING THE DEFINITE LOCATION OF TRUNK HIGHWAY NO. 52 FROM THE SOUTH JUNCTION OF TRUNK HIGHWAY NO. 60 TO THE SOUTH GOODHUE COUNTY LINE.

As shown on this plat prepared by the State of Minnesota Department of Transportation is hereby certified as the official plat of that portion of said T.H. 52 within the designated portion of Section 33 and the Commissioner's Order therefor, pursuant to Minnesota Statutes, section 160.14 subd. 1, section 160.085, and section 161.18.

Commissioner's Order No.	Location	Nature of Interest
75590	PLATS 25-15 THRU 25-20	Definite location, width, access, temporary easement and building removal easement.

Recommended for Certification: Certified

Leonard W. Levine
Commissioner of Transportation
Date: 2-26-90
R.V. Gilman
Director of Right of Way & Surveys
Date: 2-20-90
By: E.E. Jofstead
Assistant Commissioner of Transportation
Date: 2-26-90

I hereby certify that this plat was prepared by me or under my direct supervision and that I am a duly Registered Land Surveyor under the Laws of the State of Minnesota; that this plat meets requirements of Minnesota Statutes, section 161.16, Subd. 2, section 160.14, Subd. 1, section 160.085, and section 161.18; that parcel ownerships are correctly described and delineated on the plat; and that the proposed right-of-way boundary lines are correctly designated on the plat.

Certified by: J.E. Jensen 10460 2-12-90
Registered Land Surveyor Reg. No. Date
Office of Right of Way & Surveys

I hereby certify that this plat was surveyed by me or under my direct supervision and that I am a duly Registered Land Surveyor under the Laws of the State of Minnesota; that all measurements are correctly shown on this plat; and that all monuments have been correctly placed as shown on this plat.

Certified by: M. J. Jensen 11527 3-15-90
Registered Land Surveyor Reg. No. Date
M/001 District Office

SURVEY STANDARDS

- The plat values, azimuths, and distances are based on the project control survey system.
- The boundary monuments shown on this plat have been field checked for location. The standard deviation for the monument position is 0.10 feet.
- The state plane coordinates shown on one monument are based on tie to national control monuments.
- Certificates of Location have been filed at the County Recorder's Office and/or the County Engineer's Office for the section corner monuments shown on this plat.
- For details of this survey contact the Surveying and Mapping Section at the Minnesota Department of Transportation, ROCHESTER, Name of District

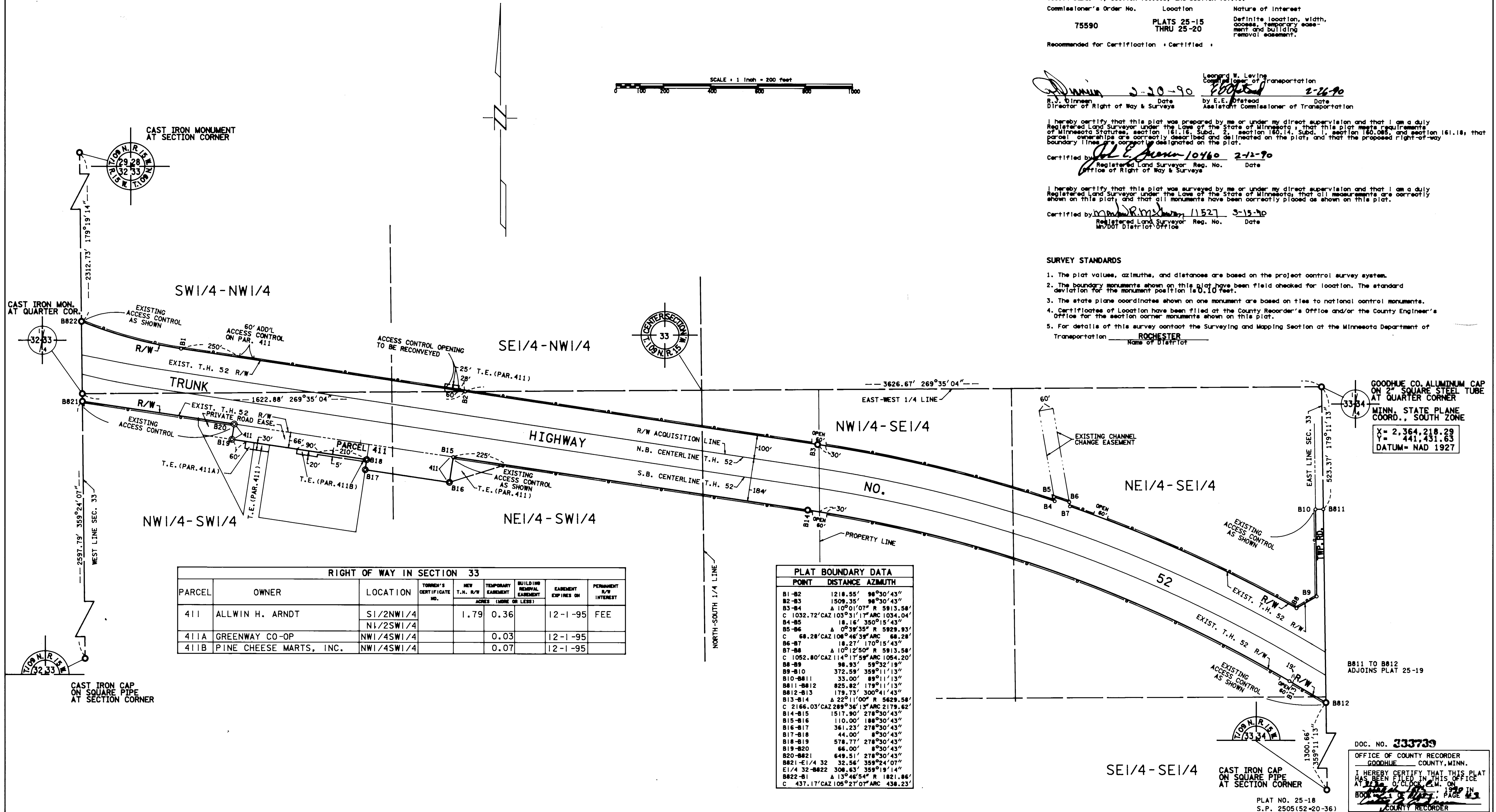
AZIMUTH ORIENTATION AND GRID CONVERSION

Plat azimuths are oriented to Minnesota State Plane Coordinate System with 0 degree 0 minutes 0 seconds being "GRID NORTH".
Plat distances are ground lengths and can be converted to Minnesota State Plane Grid lengths by multiplying Plat distances by 0.9998713.

CONVENTIONAL SYMBOLS

Section Line	Building Removal Easement	B. R. E.
Quarter Line	R/W Parcel Number	
Sixteenth Line	Access Control	
Property Line	Access Opening	
R/W Boundary	Cast Iron Monument or 2"x2" D.O.T. Iron Pipe with Aluminum Cap	
Existing D.O.T. R/W Line	3/4" D.O.T. Iron Pin	
And Other Road R/W's	Other Iron Monument	
Railroad R/W	Concrete or Stone Monument	
Private Easement	R/W Boundary Corner	
Temporary Easement		

DISTANCES SHOWN TO FEET (66, 80 ETC.) ARE EXTRINSIC VALUES.



PARCEL	OWNER	LOCATION	TORRENS' CERTIFICATE NO.	NEW T.H. R/W	TEMPORARY EASEMENT	BUILDING REMOVAL EASEMENT	EASEMENT EXPIRES ON	PERMANENT R/W INTEREST
411	ALLWIN H. ARNDT	SE1/2NW1/4 NW1/2SW1/4		1.79	0.36		12-1-95	FEE
411A	GREENWAY CO-OP	NW1/4SW1/4			0.03		12-1-95	
411B	PINE CHEESE MARTS, INC.	NW1/4SW1/4			0.07		12-1-95	

POINT	DISTANCE	AZMUTH
B1-B2	1218.55'	98°30'43"
B2-B3	1509.35'	98°30'43"
B3-B4	1000.07'	R 5913.58'
C	1032.72' CAZ 103°31'17" ARC 1034.04'	
B4-B5	18.16'	350°15'43"
B5-B6	0°39'35"	R 5929.93'
C	68.28' CAZ 108°46'39" ARC 68.28'	
B6-B7	18.27'	170°15'43"
B7-B8	1009.25'	R 5913.58'
C	1052.80' CAZ 114°17'59" ARC 1054.20'	
B8-B9	98.93'	59°32'19"
B9-B10	372.59'	359°11'13"
B10-B11	33.00'	89°11'13"
B11-B12	825.82'	179°11'13"
B12-B13	179.73'	300°41'43"
B13-B14	229.11' 00"	R 5929.93'
C	2166.03' CAZ 289°36'13" ARC 2179.62'	
B14-B15	1517.90'	278°30'43"
B15-B16	110.00'	188°30'43"
B16-B17	361.23'	278°30'43"
B17-B18	44.00'	8°30'43"
B18-B19	578.77'	278°30'43"
B19-B20	66.00'	8°30'43"
B20-B21	649.51'	278°30'43"
B21-E1/4 32	32.56'	359°24'07"
E1/4 32-B22	308.63'	359°19'14"
B22-B1	13°46'54" R 1821.86'	
C	437.17' CAZ 106°21'07" ARC 438.23'	

GOODHUE CO. ALUMINUM CAP ON 2" SQUARE STEEL TUBE AT QUARTER CORNER
MINN. STATE PLANE COORD., SOUTH ZONE
X = 2,364,218.29
Y = 441,431.63
DATUM = NAD 1927

DOC. NO. 333739
OFFICE OF COUNTY RECORDER
GOODHUE COUNTY, MINN.
I HEREBY CERTIFY THAT THIS PLAT HAS BEEN FILED IN THIS OFFICE AT 1:00 P.M. ON FEBRUARY 26, 1990 IN BOOK 25-18, PAGE 18
COUNTY RECORDER