

# MINNESOTA DEPARTMENT OF TRANSPORTATION RIGHT OF WAY PLAT NO. 25-19

STATE PROJECT NO. 2505(52=20-36)  
IN THE SOUTH HALF OF SECTION 34, T. 109 N., R. 15 W.,  
GOODHUE COUNTY, MINNESOTA

THE COMMISSIONER OF TRANSPORTATION IS HEREBY DESIGNATING THE DEFINITE LOCATION OF TRUNK HIGHWAY NO. 52 FROM THE SOUTH JUNCTION OF TRUNK HIGHWAY NO. 60 TO THE SOUTH GOODHUE COUNTY LINE.

As shown on this plat prepared by the State of Minnesota Department of Transportation is hereby certified as the official plat of that portion of said T.H. 52 within the designated portion of Section 34 and the Commissioner's Order therefor, pursuant to Minnesota Statutes, section 161.16 subd. 2, section 160.14 subd. 1, section 160.085, and section 161.18.

Commissioner's Order No.	Location	Nature of Interest
75590	PLATS 25-15 THRU 25-20	Definite location, width, access, temporary easement and building removal easement.

Recommended for Certification - Certified -

### CONVENTIONAL SYMBOLS

Section Line	Building Removal Easement	B. R. E.
Quarter Line	R/W Parcel Number	3
Sixteenth Line	Access Control	
Property Line	Access Opening	open
R/W Boundary	Cast Iron Monument or 2"x2" D.O.T. Iron Pipe with Aluminum Cap	
Existing D.O.T. R/W Line	3/4" D.O.T. Iron Pin	
And Other Road R/W's	Other Iron Monument	
Railroad R/W	Concrete or Stone Monument	
Private Easement	R/W Boundary Corner	
Temporary Easement		

DISTANCES SHOWN TO FEET ( 66, 80 ETC. ) ARE EXTRINSIC VALUES.

**AZIMUTH ORIENTATION AND GRID CONVERSION**  
Plat azimuths are oriented to Minnesota State Plane Coordinate System with 0 degrees 0 minutes 0 seconds being 'GRID NORTH'.  
Plat distances are ground lengths and can be converted to Minnesota State Plane Grid lengths by multiplying Plat distances by 0.9998713.

RIGHT OF WAY IN SECTION 34							
PARCEL	OWNER	LOCATION	TOWN'S CERTIFICATE NO.	NEW T.H. R/W		EASEMENT EXPIRES ON	PERMANENT R/W INTEREST
				TEMPORARY EASEMENT	BUILDING REMOVAL EASEMENT		
314B	DANA KOENIG	SW1/4SW1/4		0.10			FEE
315A	DORIS E. ANDRIST	SW1/4SW1/4		0.06			FEE
315B	C.P. STRACK	SE1/4SW1/4		0.05			FEE

Leonard W. Levine  
Commissioner of Transportation  
Date: 2-20-90  
by E.E. O'Leary  
Assistant Commissioner of Transportation  
Date: 2-26-90

I hereby certify that this plat was prepared by me or under my direct supervision and that I am a duly Registered Land Surveyor under the Laws of the State of Minnesota; that this plat meets requirements of Minnesota Statutes, section 161.16, Subd. 2, section 160.14, Subd. 1, section 160.085, and section 161.18; that parcel ownerships are correctly described and delineated on the plat; and that the proposed right-of-way boundary lines are correctly designated on the plat.

Certified by: J. E. Hume - 10460 - 2-12-90  
Registered Land Surveyor Reg. No. Date  
Office of Right of Way & Surveys

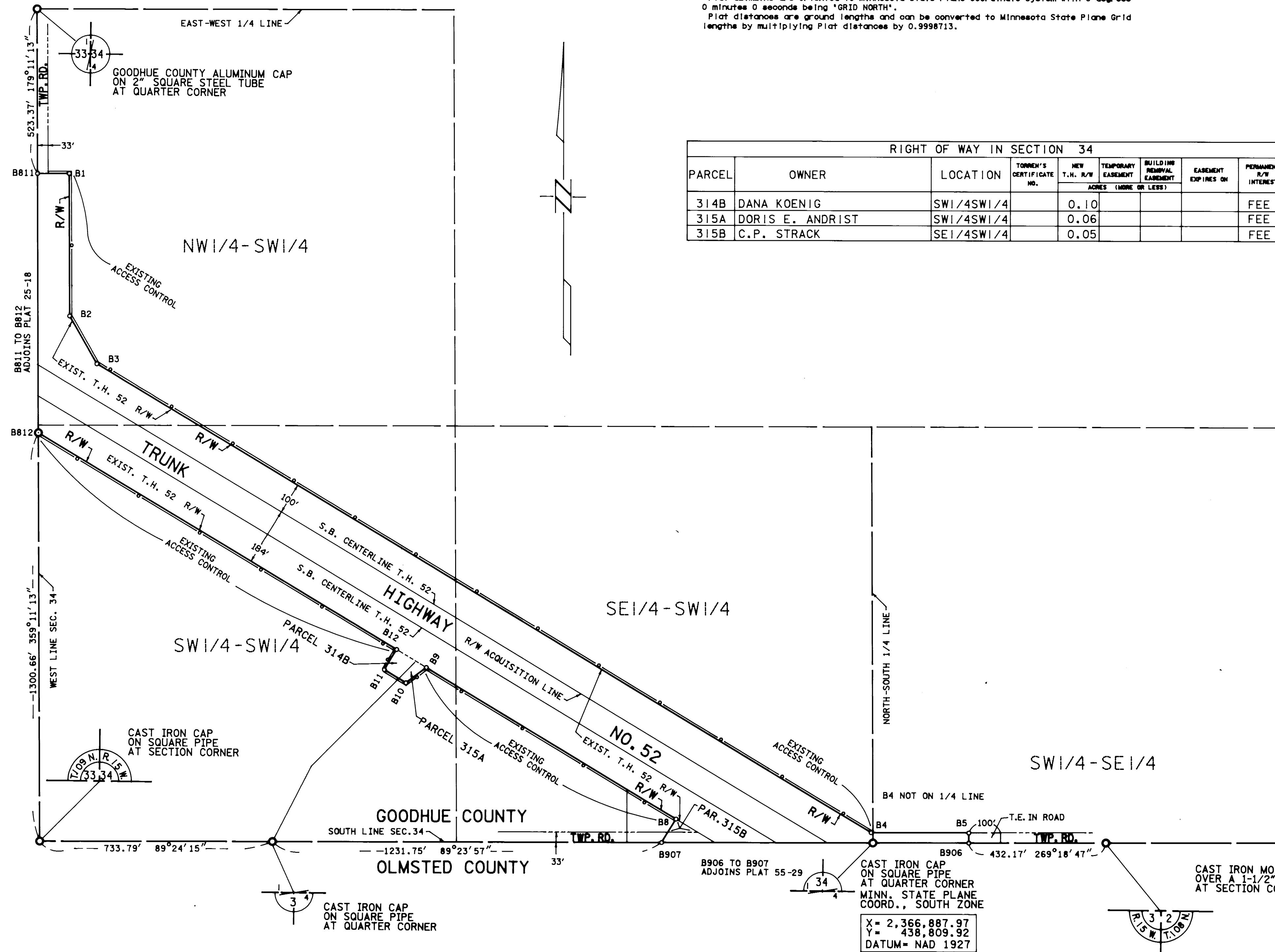
I hereby certify that this plat was surveyed by me or under my direct supervision and that I am a duly Registered Land Surveyor under the Laws of the State of Minnesota; that all measurements are correctly shown on this plat; and that all monuments have been correctly placed as shown on this plat.

Certified by: M. R. McManis - 11527 - 3-15-90  
Registered Land Surveyor Reg. No. Date  
Mn/DOT District Office

### SURVEY STANDARDS

- The plat values, azimuths, and distances are based on the project control survey system.
- The boundary monuments shown on this plat have been field checked for location. The standard deviation for the monument position is 0.1 feet.
- The state plane coordinates shown on one monument are based on ties to national control monuments.
- Certificates of Location have been filed at the County Recorder's Office and/or the County Surveyor's Office for the section corner monuments shown on this plat.
- For details of this survey contact the Surveying and Mapping Section at the Minnesota Department of Transportation, ROCHESTER, Name of District.

PLAT BOUNDARY DATA		
POINT	DISTANCE	AZIMUTH
B811-B1	100.00'	89°11'13"
B1-B2	454.01'	179°11'33"
B2-B3	174.51'	149°56'28"
B3-B4	2864.44'	120°41'43"
B4-B5	308.20'	89°18'47"
B5-B906	33.00'	179°18'47"
B906-S1/4 34	302.95'	269°18'47"
S1/4 34-B907	667.02'	269°23'57"
B907-B8	87.93'	30°41'43"
B8-B9	925.00'	300°41'43"
B9-B10	80.78'	232°29'48"
B10-B11	80.00'	300°41'43"
B11-B12	75.00'	30°41'43"
B12-B812	1324.33'	300°41'43"
B812-B811	825.82'	359°11'13"



X = 2,366,887.97  
Y = 438,809.92  
DATUM = NAD 1927

DOC. NO. 333740  
OFFICE OF COUNTY RECORDER  
GOODHUE COUNTY, MINN.  
I HEREBY CERTIFY THAT THIS PLAT  
HAS BEEN FILED IN THIS OFFICE  
AT 2:00 P.M. ON 2-26-90  
BOB [Signature] COUNTY RECORDER

PLAT NO. 25-19  
S.P. 2505(52=20-36)