

# MINNESOTA DEPARTMENT OF TRANSPORTATION RIGHT OF WAY PLAT NO. 25-24

STATE PROJECT NO. 2510(58)=58-21-3)  
N SECTION 19, T. 110 N., R. 15 W.,  
GOODHUE COUNTY, MINNESOTA

THE COMMISSIONER OF TRANSPORTATION IS HEREBY DESIGNATING THE DEFINITE LOCATION OF TRUNK HIGHWAY NO. 58 FROM THE NORTH CITY LIMITS OF ZUMBROTA TO 5.0 MILES SOUTH OF GOODHUE.

As shown on this plat prepared by the State of Minnesota Department of Transportation is hereby certified as the official plat of that portion of said T.H. 58 within the designated portion of Section 19 160.14 Subd. 1, section 160.088, and section 161.18.

Commissioner's Order No.	Location	Nature of Interest
76492	PLATS 25-23 THRU 25-25	Definite location, width, access, temporary easement and building removal easement.

Recommended for Certification: Certified

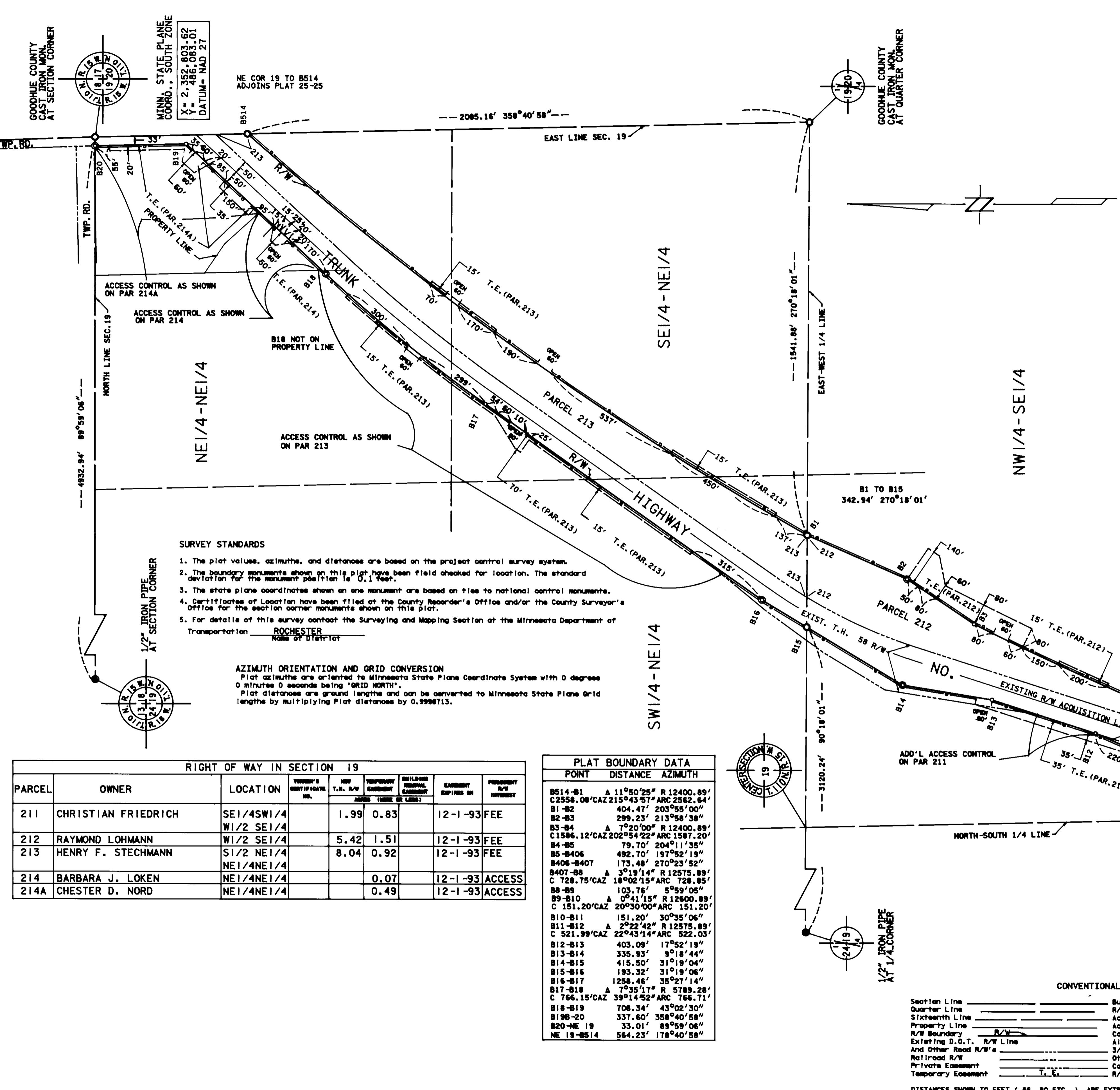
*J. Rasmussen* 1/30/91  
by *E.E. Orfield* 1-30-91  
Director of Right of Way & Surveys by E.E. Orfield, Assistant Commissioner of Transportation

I hereby certify that this plat was prepared by me or under my direct supervision and that I am a duly registered Land Surveyor under the Laws of the State of Minnesota; that this plat meets requirements of Minnesota Statutes, section 161.16, Subd. 2, section 160.14, Subd. 1, section 160.088, and section 161.18; that parcel boundaries are correctly described and delineated on the plat; and that the proposed right-of-way boundary lines are correctly designated on the plat.

Certified by *S. Egan* 11933 1-30-91  
Registered Land Surveyor Reg. No. Date  
Office of Right of Way & Surveys

I hereby certify that this plat was surveyed by me or under my direct supervision and that I am a duly registered Land Surveyor under the Laws of the State of Minnesota; that all measurements are correctly shown on this plat; and that all monuments have been correctly placed as shown on this plat.

Certified by *M. R. ...* 11527 1-31-91  
Registered Land Surveyor Reg. No. Date  
District Office



- SURVEY STANDARDS**
- The plat values, azimuths, and distances are based on the project control survey system.
  - The boundary monuments shown on this plat have been field checked for location. The standard deviation for the monument position is 0.1 feet.
  - The state plane coordinates shown on one monument are based on ties to national control monuments.
  - Certificates of Location have been filed at the County Recorder's Office and/or the County Surveyor's Office for the section corner monuments shown on this plat.
  - For details of this survey contact the Surveying and Mapping Section at the Minnesota Department of Transportation  
ROCHESTER  
State of Minnesota

**AZIMUTH ORIENTATION AND GRID CONVERSION**  
Plat azimuths are oriented to Minnesota State Plane Coordinate System with 0 degree 0 minutes 0 seconds being GRID NORTH.  
Plat distances are ground lengths and can be converted to Minnesota State Plane Grid lengths by multiplying Plat distances by 0.9998713.

PARCEL	OWNER	LOCATION	TRUNK'S CERTIFICATE NO.	USE T.H. R/W	TEMPERARY EASEMENT	BUILDING REMOVAL EASEMENT	EASEMENT EXPIRES ON	PERMANENT R/W INTEREST
211	CHRISTIAN FRIEDRICH	SE1/4SW1/4		1.99	0.83		12-1-93	FEE
212	RAYMOND LOHMANN	W1/2 SE1/4		5.42	1.51		12-1-93	FEE
213	HENRY F. STECHMANN	S1/2 NE1/4		8.04	0.92		12-1-93	FEE
214	BARBARA J. LOKEN	NE1/4NE1/4			0.07		12-1-93	ACCESS
214A	CHESTER D. NORD	NE1/4NE1/4			0.49		12-1-93	ACCESS

POINT	DISTANCE	AZIMUTH
B514-B1	Δ 11°50'25" R 12400.89'	
C 2558.08' CAZ 215°43'57" ARC 2562.64'		
B1-B2	404.47' 203°55'00"	
B2-B3	299.23' 213°58'38"	
B3-B4	Δ 1°20'00" R 12400.89'	
C 1586.12' CAZ 202°54'22" ARC 1587.20'		
B4-B5	79.70' 204°11'35"	
B5-B406	492.70' 197°52'19"	
B406-B407	173.48' 270°23'52"	
B407-B8	Δ 3°19'14" R 12575.89'	
C 728.75' CAZ 18°02'15" ARC 728.85'		
B8-B9	103.76' 5°59'05"	
B9-B10	Δ 0°41'15" R 12600.89'	
C 151.20' CAZ 20°30'00" ARC 151.20'		
B10-B11	151.20' 30°35'06"	
B11-B12	Δ 2°22'42" R 12575.89'	
C 521.99' CAZ 22°43'14" ARC 522.03'		
B12-B13	403.09' 17°52'19"	
B13-B14	335.93' 9°18'44"	
B14-B15	415.50' 31°19'04"	
B15-B16	193.32' 31°19'06"	
B16-B17	1258.46' 35°27'14"	
B17-B18	Δ 7°35'17" R 5789.28'	
C 766.15' CAZ 39°14'52" ARC 766.71'		
B18-B19	708.34' 43°02'30"	
B19-B20	337.60' 358°40'58"	
B20-NE 19	33.01' 89°59'06"	
NE 19-B514	564.23' 178°40'58"	

**CONVENTIONAL SYMBOLS**

Section Line	Building Removal Easement	B. R. E.
Quarter Line	R/W Parcel Number	3
Sixteenth Line	Access Control	
Property Line	Access Opening	open
R/W Boundary	Cast Iron Monument or 2"x2" D.O.T. Iron Pipe with Aluminum Cap	
Existing D.O.T. R/W Line	3/4" D.O.T. Iron Pin	
And Other Road R/W's	Other Iron Monument	
Railroad R/W	Concrete or Stone Monument	
Private Easement	R/W Boundary Corner	
Temporary Easement		

DISTANCES SHOWN TO FEET ( 66, 80 ETC. ) ARE EXTRINSIC VALUES.



DOC. NO. 340915  
OFFICE OF COUNTY RECORDER  
GOODHUE COUNTY, MINN.  
I HEREBY CERTIFY THAT THIS PLAT WAS FILED IN THIS OFFICE AT 1:22 P.M. ON 1/30/91 IN ACCORDANCE WITH MINN. STAT. § 161.18  
COUNTY RECORDER

PLAT NO. 25-24  
S.P. 2510(58)=58-21-3)