

MINNESOTA DEPARTMENT OF TRANSPORTATION RIGHT OF WAY PLAT NO. 25-25

STATE PROJECT NO. 2510(58-58-21-3)
IN THE SOUTH HALF OF SECTION 17, T. 110 N., R. 15 W.,
IN THE NORTHWEST QUARTER SECTION 20, T. 110 N., R. 15 W.,
GOODHUE COUNTY, MINNESOTA

THE COMMISSIONER OF TRANSPORTATION IS HEREBY DESIGNATING THE DEFINITE
LOCATION OF TRUNK HIGHWAY NO. 58 FROM THE NORTH CITY LIMITS OF
ZUMBROTA TO 5.0 MILES SOUTH OF GOODHUE.

As shown on this plat prepared by the State of Minnesota Department of Transportation is hereby certified as
the original plat of that portion of said H.S. 58 within the designated portion of Sections 17 & 20
and the Commissioner's Order therefor, pursuant to Minnesota Statutes, section 161.16 subd. 2, section
160.14 subd. 1, section 160.085, and section 161.18.

Commissioner's Order No.	Location	Nature of Interest
76492	PLATS 25-23 THRU 25-25	Definite location, width, access, temporary ease- ment and building removal easement.

Recommended for Certification : Certified :

K. F. Rasmussen 1/30/91
R. J. Dillman 1/30/91
 Date Date
 Director of Right of Way & Surveys Assistant Commissioner of Transportation

I hereby certify that this plat was prepared by me or under my direct supervision and that I am a duly
Registered Land Surveyor under the Laws of the State of Minnesota; that this plat meets requirements
of Minnesota Statutes, section 161.16, Subd. 1, section 160.14, Subd. 1, section 160.085, and section 161.18; that
parcel overlaps are correctly described and so located on the plat; and that the proposed right-of-way
boundary lines are correctly designated on the plat.

Certified by *R. E. Olson* 1/9/93 1-30-91
Registered Land Surveyor Reg. No. Date
Office of Right of Way & Surveys

I hereby certify that this plat was surveyed by me or under my direct supervision and that I am a duly
Registered Land Surveyor under the Laws of the State of Minnesota; that all measurements are correctly
shown on this plat; and that all monuments have been correctly placed as shown on this plat.

Certified by *W. R. Yoder* 1/9/91 1-31-91
Registered Land Surveyor Reg. No. Date
M/DOT District Office

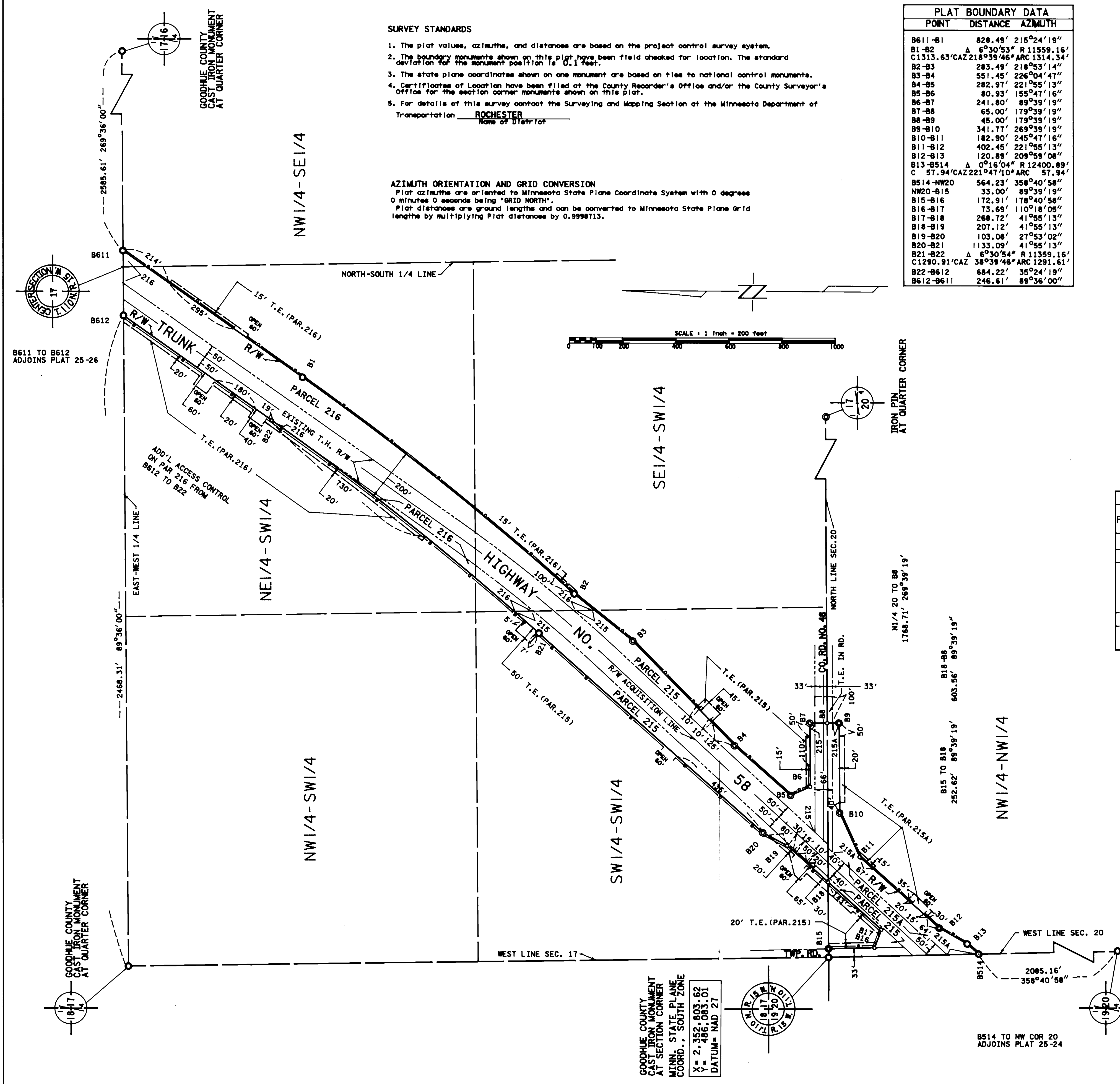
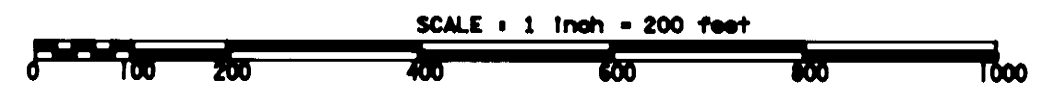
PLAT BOUNDARY DATA		
POINT	DISTANCE	AZIMUTH
B611-B1	828.49'	215°24'19"
B1-B2	Δ 6°30'53" R 11559.16'	
C1313.63/CAZ218°39'46"ARC 1314.34'		
B2-B3	283.49'	218°53'14"
B3-B4	551.45'	226°04'47"
B4-B5	282.97'	221°55'13"
B5-B6	80.93'	155°47'16"
B6-B7	241.80'	89°39'19"
B7-B8	65.00'	179°39'19"
B8-B9	45.00'	179°39'19"
B9-B10	341.77'	269°39'19"
B10-B11	182.90'	245°47'16"
B11-B12	402.45'	221°55'13"
B12-B13	120.89'	209°59'08"
B13-B514	Δ 0°16'04" R 12400.89'	
C 57.94'CAZ221°47'10"ARC 57.94'		
B514-NW20	564.23'	358°40'58"
NW20-B15	33.00'	89°39'19"
B15-B16	172.91'	178°40'58"
B16-B17	73.69'	110°18'05"
B17-B18	268.72'	41°55'13"
B18-B19	207.12'	41°55'13"
B19-B20	103.08'	27°53'02"
B20-B21	1133.09'	41°55'13"
B21-B22	Δ 6°30'54" R 11359.16'	
C1290.91/CAZ 38°39'46"ARC 1291.51'		
B22-B612	684.22'	35°24'19"
B612-B611	246.61'	89°36'00"

SURVEY STANDARDS

- The plat values, azimuths, and distances are based on the project control survey system.
- The boundary monuments shown on this plat have been field checked for location. The standard deviation for the monument position is 0.1 feet.
- The state plane coordinates shown on one monument are based on ties to national control monuments.
- Certificates of Location have been filed at the County Recorder's Office and/or the County Surveyor's Office for the section corner monuments shown on this plat.
- For details of this survey contact the Surveying and Mapping Section at the Minnesota Department of Transportation
ROCHESTER
Name of District

AZIMUTH ORIENTATION AND GRID CONVERSION

Plat azimuths are oriented to Minnesota State Plane Coordinate System with 0 degree
0 minutes 0 seconds being "GRID NORTH".
Plat distances are ground lengths and can be converted to Minnesota State Plane Grid
lengths by multiplying Plat distances by 0.9998713.



RIGHT OF WAY IN SECTION 20						
PARCEL	OWNER	LOCATION	TOWN'S CERTIFICATE NO.	R/W		EASEMENT EXPIRES ON
				T.H.	ACRES (MORE OR LESS)	
215A	GLORIA M. VANG	NW1/4NW1/4		1.19	0.22	12-1-93 FEE
RIGHT OF WAY IN SECTIONS 17 & 20						
215	WILLIS DEDEN	NW1/4NW1/4		3.02	0.67	12-1-93 FEE
		SEC 20 SW1/4SW1/4 SEC 17				
RIGHT OF WAY IN SECTION 17						
216	DARRELL H. HINRICHS	E1/2 SW1/4 NW1/4SE1/4		4.72	0.89	12-1-93 FEE

TEMPORARY EASEMENTS IN PUBLIC ROADS EXPIRE ON 12-1-93.

CONVENTIONAL SYMBOLS

- Section Line
- Quarter Line
- Sixteenth Line
- Property Line
- R/W Boundary
- Existing D.O.T. R/W Line
- And Other Road R/W's
- Railroad R/W
- Private Easement
- Temporary Easement
- Building Removal Easement
- R/W Parcel Number
- Access Control
- Access Opening
- Cast Iron Monument or 2"x2" D.O.T. Iron Pipe with Aluminum Cap
- 3/4" D.O.T. Iron Pin
- Other Iron Monument
- Concrete or Stone Monument
- R/W Boundary Corner

DISTANCES SHOWN TO FEET (66, 80 ETC.) ARE EXTRINSIC VALUES.

GOODHUE COUNTY
CAST IRON MONUMENT
AT SECTION CORNER
MINN. STATE PLANE
COORD. - SOUTH ZONE
X = 2,352,803.62
Y = 486,083.01
DATUM = NAD 27

DOC. NO. 340516
 OFFICE OF COUNTY RECORDER
 GOODHUE COUNTY, MINN.
 I HEREBY CERTIFY THAT THIS PLAT
 HAS BEEN FILED IN THIS OFFICE
 AT 2:32 O'CLOCK P.M. ON
 1/31/91
 COUNTY RECORDER

PLAT NO. 25-25
S.P. 2510(58-58-21-3)