

MINNESOTA DEPARTMENT OF TRANSPORTATION RIGHT OF WAY PLAT NO. 25-28

STATE PROJECT NO. 2510 (58-58-21-3)
IN SECTION 4, T. 110 N., R. 15 W.,
GOODHUE COUNTY, MINNESOTA

THE COMMISSIONER OF TRANSPORTATION IS HEREBY DESIGNATING THE DEFINITE LOCATION OF TRUNK HIGHWAY NO. 58 FROM GOODHUE TO 3.0 MILES SOUTH OF GOODHUE.

As shown on this plat prepared by the State of Minnesota Department of Transportation is hereby certified as the official plat of that portion of said T.H. 58 within the designated portion of Section 4 and the Commissioner's Order therefor, pursuant to Minnesota Statutes, section 161.16 subd. 2, section 160.14 subd. 1, section 160.085, and section 161.18.

Commissioner's Order No.	Location	Nature of Interest
76493	PLATS 25-28 THRU 25-31	Definite location, width, easement, temporary easement and building removal easement.

Recommended for Certification - Certified -

John H. Riley
Commissioner of Transportation
Date 1/23/91
by E.E. Osthead
Assistant Commissioner of Transportation
Date 1/23/91

I hereby certify that this plat was prepared by me or under my direct supervision and that I am a duly Registered Land Surveyor under the Laws of the State of Minnesota, that this plat meets requirements of Minnesota Statutes, section 161.16 subd. 1, section 160.14 subd. 1, section 160.085, and section 161.18; that parcel boundaries are correctly described and delineated on the plat; and that the proposed right-of-way boundary lines are correctly designated on the plat.

Certified by R. E. Lohr 11933 1-22-91
Registered Land Surveyor Reg. No. Date
Office of Right of Way & Surveys

I hereby certify that this plat was surveyed by me or under my direct supervision and that I am a duly Registered Land Surveyor under the Laws of the State of Minnesota, that all measurements are correctly shown on this plat, and that all monuments have been correctly placed as shown on this plat.

Certified by W. J. Dinnon 11527 1-28-91
Registered Land Surveyor Reg. No. Date
Office of Right of Way & Surveys

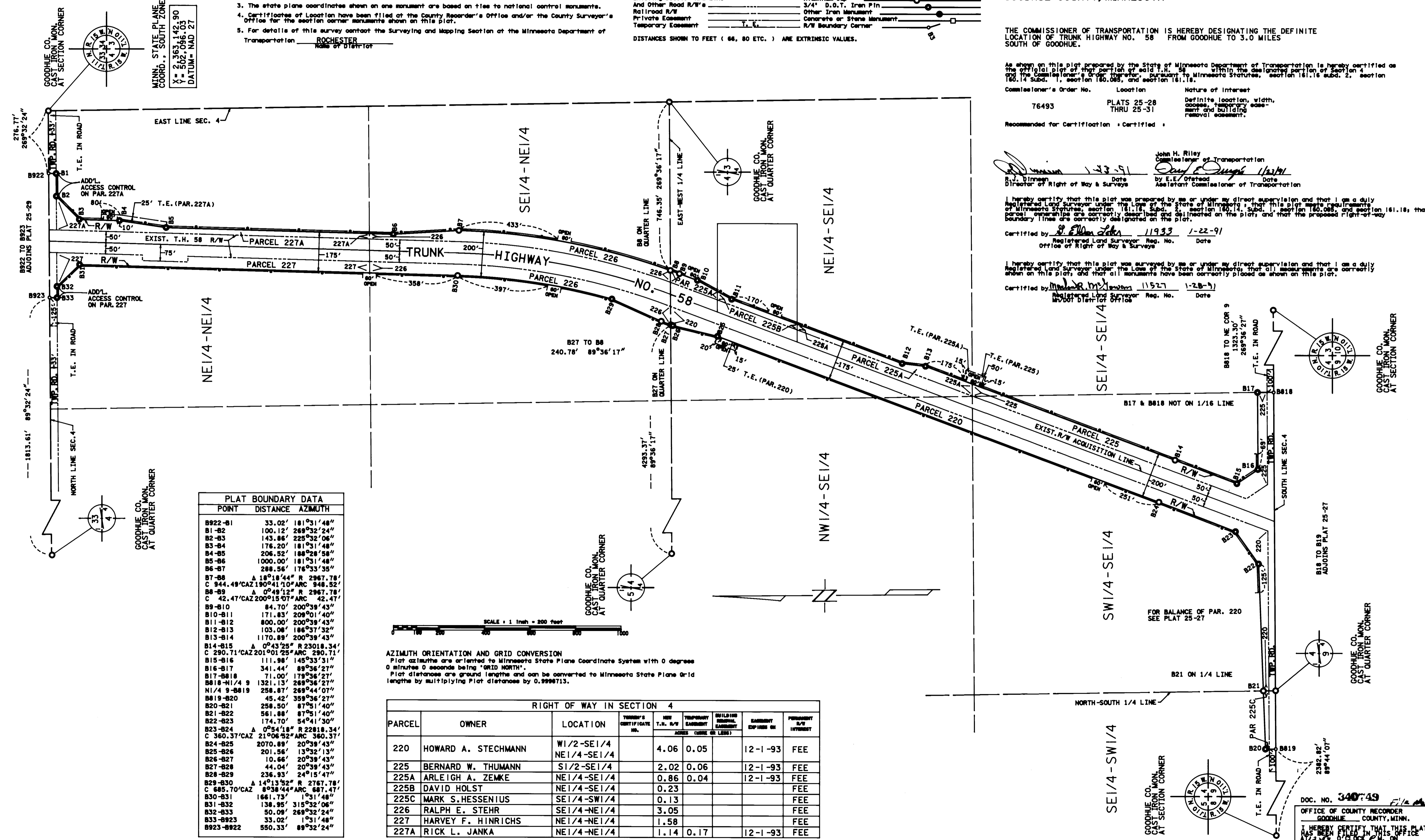
SURVEY STANDARDS

- The plat values, azimuths, and distances are based on the project control survey system.
- The boundary monuments shown on this plat have been field checked for location. The standard deviation for the monument position is 0.1 feet.
- The state plane coordinates shown on one monument are based on ties to national control monuments.
- Certificates of Location have been filed at the County Recorder's Office and/or the County Surveyor's Office for the section corner monuments shown on this plat.
- For details of this survey contact the Surveying and Mapping Section at the Minnesota Department of Transportation
ROCHESTER
Name of District

CONVENTIONAL SYMBOLS

Section Line	Building Removal Easement	R. R. E.
Quarter Line	R/W Parcel Number	
Sixteenth Line	Access Control	
Property Line	Access Opening	
R/W Boundary	Cost Iron Monument or 2"x2" D.O.T. Iron Pipe with Aluminum Cap	
Existing D.O.T. R/W Line	3/4" D.O.T. Iron Pin	
And Other Road R/W's	Other Iron Monument	
Railroad R/W	Concrete or Stone Monument	
Private Easement	R/W Boundary Corner	
Temporary Easement		

DISTANCES SHOWN TO FEET (66, 80 ETC.) ARE EXTRINSIC VALUES.



PLAT BOUNDARY DATA

POINT	DISTANCE	AZIMUTH
B922-B1	33.02'	181°31'48"
B1-B2	100.12'	269°32'24"
B2-B3	143.86'	225°32'06"
B3-B4	176.20'	181°31'48"
B4-B5	206.52'	188°28'58"
B5-B6	1000.00'	181°31'48"
B6-B7	288.56'	176°33'35"
B7-B8	A 18°18'44" R 2967.78'	
C 944.49'CAZ 190°41'10" ARC 948.52'		
B8-B9	A 0°49'12" R 2967.78'	
C 42.47'CAZ 200°15'07" ARC 42.47'		
B9-B10	84.70'	200°39'43"
B10-B11	171.83'	209°01'40"
B11-B12	800.00'	200°39'43"
B12-B13	103.08'	186°37'32"
B13-B14	1170.89'	200°39'43"
B14-B15	A 0°43'25" R 23018.34'	
C 290.71'CAZ 201°01'25" ARC 290.71'		
B15-B16	111.98'	145°23'51"
B16-B17	341.44'	89°26'27"
B17-B18	71.00'	178°26'27"
B18-N1/4	9 1321.13'	269°36'27"
N1/4 9-B19	258.87'	269°44'07"
B19-B20	45.42'	359°36'27"
B20-B21	258.50'	87°51'40"
B21-B22	561.88'	87°51'40"
B22-B23	174.70'	54°41'30"
B23-B24	A 0°54'18" R 22818.34'	
C 360.37'CAZ 21°06'52" ARC 360.37'		
B24-B25	2070.89'	20°39'43"
B25-B26	201.56'	13°32'13"
B26-B27	10.66'	20°39'43"
B27-B28	44.04'	20°39'43"
B28-B29	236.93'	24°15'47"
B29-B30	A 14°13'52" R 2767.78'	
C 685.70'CAZ 8°38'44" ARC 687.47'		
B30-B31	1661.73'	1°31'48"
B31-B32	138.95'	315°32'06"
B32-B33	50.09'	269°32'24"
B33-B923	33.02'	1°31'48"
B923-B922	550.33'	89°32'24"



AZIMUTH ORIENTATION AND GRID CONVERSION
Plat azimuths are oriented to Minnesota State Plane Coordinate System with 0 degrees 0 minutes 0 seconds being "GRID NORTH".
Plat distances are ground lengths and can be converted to Minnesota State Plane Grid lengths by multiplying Plat distances by 0.9998713.

RIGHT OF WAY IN SECTION 4

PARCEL	OWNER	LOCATION	TOWN'S CERTIFICATE NO.	NEW T.H. R/W ACRES (MORE OR LESS)	TEMPORARY EASEMENT ACRES (MORE OR LESS)	BUILDING REMOVAL EASEMENT	EXPIRES ON	PERMANENT R/W INTRUSION
220	HOWARD A. STECHMANN	W1/2-SE1/4 NE1/4-SE1/4		4.06	0.05		12-1-93	FEE
225	BERNARD W. THUMANN	S1/2-SE1/4		2.02	0.06		12-1-93	FEE
225A	ARLEIGH A. ZEMKE	NE1/4-SE1/4		0.86	0.04		12-1-93	FEE
225B	DAVID HOLST	NE1/4-SE1/4		0.23				FEE
225C	MARK S. HESSENIUS	SE1/4-SW1/4		0.13				FEE
226	RALPH E. STEHR	SE1/4-NE1/4		3.05				FEE
227	HARVEY F. HINRICHS	NE1/4-NE1/4		1.58				FEE
227A	RICK L. JANKA	NE1/4-NE1/4		1.14	0.17		12-1-93	FEE

DOC. NO. 340749
OFFICE OF COUNTY RECORDER
GOODHUE COUNTY, MINN.
I HEREBY CERTIFY THAT THIS PLAT
WAS FILED IN MY OFFICE
ON 1/23/91 AT 10:00 A.M. IN
BOOK 25-28 PAGE 1
COUNTY RECORDER