

MINNESOTA DEPARTMENT OF TRANSPORTATION RIGHT OF WAY PLAT NO. 25-32 *

STATE PROJECT NO. 2510(58-58-21-3)
IN SECTION 9, T. 110 N., R. 15 W.,
GOODHUE COUNTY, MINNESOTA

* AMENDMENT TO: MINNESOTA DEPARTMENT OF TRANSPORTATION
RIGHT OF WAY PLAT NO. 25-27
PARCEL 223A

THE COMMISSIONER OF TRANSPORTATION IS HEREBY DESIGNATING THE DEFINITE
LOCATION OF TRUNK HIGHWAY NO. 58 FROM 3.0 MILES TO 4.0 MILES
SOUTH OF GOODHUE.

As shown on this plat prepared by the State of Minnesota Department of Transportation is hereby certified as the official plat of that portion of said 1/4 Sec. 9 within the designated portion of Section 9 and the Commissioner's Order therefor, pursuant to Minnesota Statutes, section 161.16 subd. 2, section 160.14 subd. 1, section 160.085, and section 161.18.

Commissioner's Order No.	Location	Nature of Interest
77080	PLAT 25-32	Definite location, width, access, temporary easement and building removal easement.

Recommended for Certification - Certified -

John H. Bley
Commissioner of Transportation
Date: 5-23-91
by *E.E. Ofsod*
Assistant Commissioner of Transportation
Date: 5-23-91

I hereby certify that this plat was prepared by me or under my direct supervision and that I am a duly Registered Land Surveyor under the Laws of the State of Minnesota, that this plat meets requirements of Minnesota Statutes, section 161.16, Subd. 2, section 160.14, Subd. 1, section 160.085, and section 161.18, that parcel ownerships are correctly described and delineated on the plat, and that the proposed right-of-way boundary line is correctly delineated on the plat.

Certified by *Smith Kohler 12042* 5-23-91
Registered Land Surveyor Reg. No. Date
Office of Right of Way & Surveys

I hereby certify that this plat was surveyed by me or under my direct supervision and that I am a duly Registered Land Surveyor under the Laws of the State of Minnesota, that all measurements are correctly shown on this plat and that all monuments have been correctly placed as shown on this plat.

Certified by *W.D. Rasmussen 11527* 6-3-91
Registered Land Surveyor Reg. No. Date
M/DOT District Office

SURVEY STANDARDS

- The plat values, azimuths, and distances are based on the project control survey system.
- The boundary monuments shown on this plat have been field checked for location. The standard deviation for the monument position is 0.1 feet.
- The state plane coordinates shown on one monument are based on ties to national control monuments.
- Certificates of Location have been filed at the County Recorder's Office and/or the County Surveyor's Office for the section corner monuments shown on this plat.
- For details of this survey contact the Surveying and Mapping Section at the Minnesota Department of Transportation, ROCHESTER, Name of District

AZIMUTH ORIENTATION AND GRID CONVERSION

Plat azimuths are oriented to Minnesota State Plane Coordinate System with 0 degree 0 minutes 0 seconds being "GRID NORTH".
Plat distances are ground lengths and can be converted to Minnesota State Plane Grid lengths by multiplying Plat distances by 0.9998713.

PLAT BOUNDARY DATA

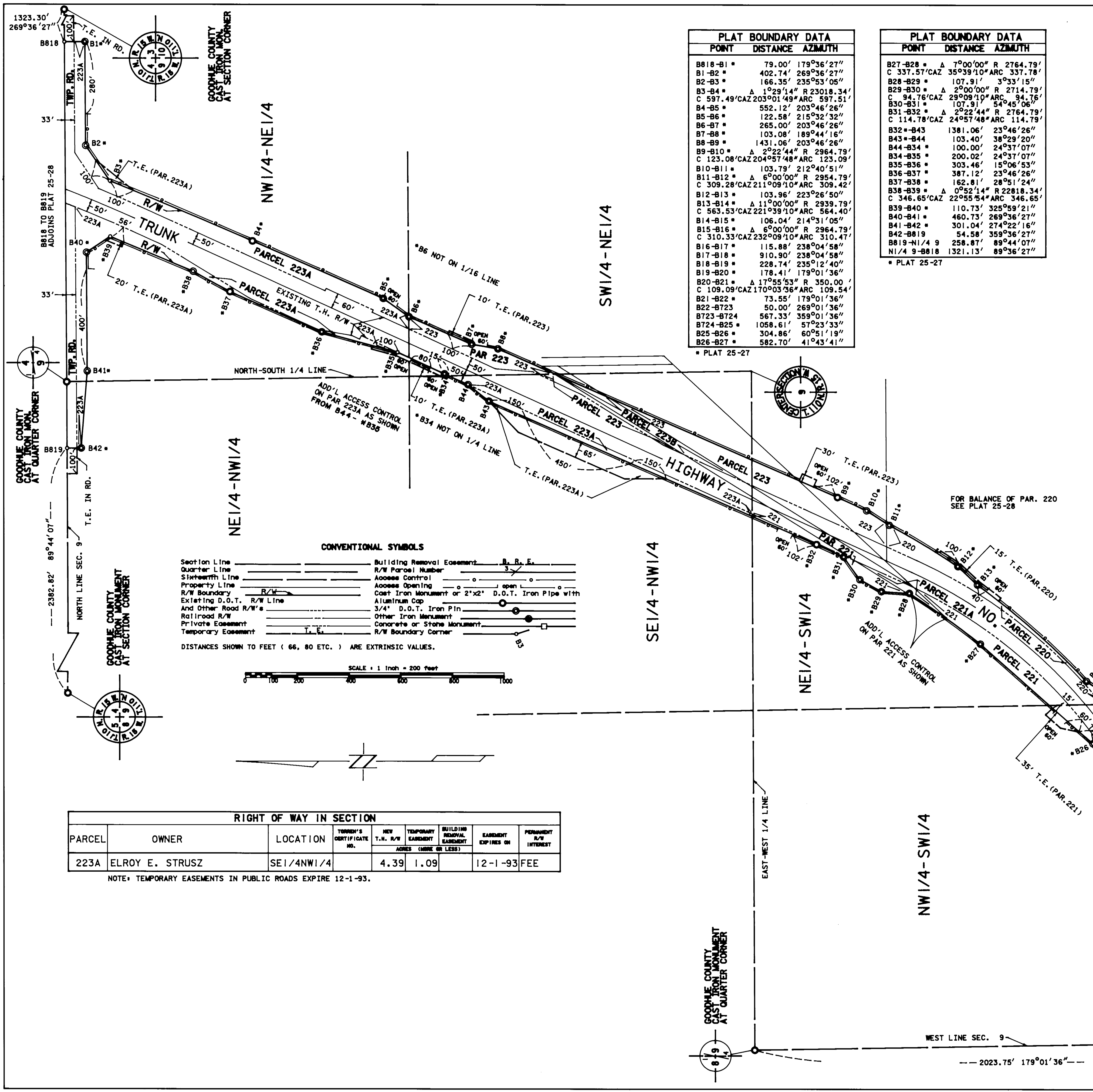
POINT	DISTANCE	AZIMUTH
B818-B1*	79.00'	179°36'27"
B1-B2*	402.74'	269°36'27"
B2-B3*	166.35'	235°53'05"
B3-B4*	1°29'14" R 23018.34'	
C 597.49'CAZ 203°01'49"ARC 597.51'		
B4-B5*	552.12'	203°46'26"
B5-B6*	122.58'	215°32'32"
B6-B7*	265.00'	203°46'26"
B7-B8*	103.08'	189°44'16"
B8-B9*	1431.06'	203°46'26"
B9-B10*	2°22'44" R 2964.79'	
C 123.08'CAZ 204°57'48"ARC 123.09'		
B10-B11*	103.79'	212°40'51"
B11-B12*	6°00'00" R 2954.79'	
C 309.28'CAZ 211°09'10"ARC 309.42'		
B12-B13*	103.96'	223°26'50"
B13-B14*	11°00'00" R 2939.79'	
C 563.53'CAZ 221°39'10"ARC 564.40'		
B14-B15*	106.04'	214°31'05"
B15-B16*	6°00'00" R 2964.79'	
C 310.33'CAZ 232°09'10"ARC 310.47'		
B16-B17*	115.88'	238°04'58"
B17-B18*	910.90'	238°04'58"
B18-B19*	228.74'	235°12'40"
B19-B20*	178.41'	179°01'36"
B20-B21*	17°55'53" R 350.00'	
C 109.09'CAZ 170°03'56"ARC 109.54'		
B21-B22*	73.55'	179°01'36"
B22-B23*	50.00'	269°01'36"
B23-B24*	567.33'	359°01'36"
B24-B25*	1058.61'	57°23'33"
B25-B26*	304.86'	60°51'19"
B26-B27*	582.70'	41°43'41"

* PLAT 25-27

PLAT BOUNDARY DATA

POINT	DISTANCE	AZIMUTH
B27-B28*	7°00'00" R 2764.79'	
C 337.57'CAZ 35°39'10"ARC 337.78'		
B28-B29*	107.91'	3°33'15"
B29-B30*	2°00'00" R 2714.79'	
C 94.76'CAZ 29°09'10"ARC 94.76'		
B30-B31*	107.91'	54°45'06"
B31-B32*	2°22'44" R 2764.79'	
C 114.78'CAZ 24°57'48"ARC 114.79'		
B32-B33*	1381.06'	23°46'26"
B33-B34*	103.40'	38°29'20"
B34-B35*	100.00'	24°37'07"
B35-B36*	200.02'	24°37'07"
B36-B37*	303.46'	15°06'53"
B37-B38*	387.12'	23°46'26"
B38-B39*	162.81'	28°51'24"
B39-B40*	2°55'54" R 22818.34'	
C 346.65'CAZ 22°55'54"ARC 346.65'		
B40-B41*	110.73'	325°59'21"
B41-B42*	460.73'	269°36'27"
B42-B43*	301.04'	274°22'16"
B43-B44*	54.58'	359°36'27"
B44-B45*	258.87'	89°44'07"
B45-B46*	1321.13'	89°36'27"

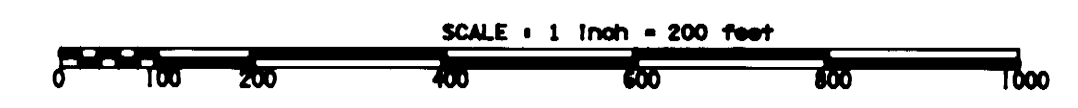
* PLAT 25-27



CONVENTIONAL SYMBOLS

Section Line	Building Removal Easement
Quarter Line	R/W Parcel Number
Sixteenth Line	Access Control
Property Line	Access Opening
R/W Boundary	Cast Iron Monument or 2"x2" D.O.T. Iron Pipe with Aluminum Cap
Existing D.O.T. R/W Line	3/4" D.O.T. Iron Pin
And Other Road R/W's	Other Iron Monument
Railroad R/W	Concrete or Stone Monument
Private Easement	R/W Boundary Corner
Temporary Easement	

DISTANCES SHOWN TO FEET (66, 80 ETC.) ARE EXTRINSIC VALUES.



RIGHT OF WAY IN SECTION

PARCEL	OWNER	LOCATION	TURNER'S CERTIFICATE NO.	NEW T.H. R/W		BUILDING REMOVAL EASEMENT	EASEMENT EXPIRES ON	PERMANENT R/W INTEREST
				ACRES	(MORE OR LESS)			
223A	ELROY E. STRUSZ	SE1/4NW1/4		4.39	1.09		12-1-93	FEE

NOTE: TEMPORARY EASEMENTS IN PUBLIC ROADS EXPIRE 12-1-93.

DOC. NO. 343531
OFFICE OF COUNTY RECORDER
GOODHUE COUNTY, MINN.
I HEREBY CERTIFY THAT THIS PLAT
HAS BEEN FILED IN THIS OFFICE
AT 2:22 P.M. ON
PAGE 1 OF 1
COUNTY RECORDER