

MINNESOTA DEPARTMENT OF TRANSPORTATION
RIGHT OF WAY PLAT NO. 25-34

STATE PROJECT NO. 2514(61=3-60-2)
IN THE WEST HALF OF SECTION 18, T. 113N., R. 15 W.,
GOODHUE COUNTY, MINNESOTA

THE COMMISSIONER OF TRANSPORTATION IS HEREBY DESIGNATING THE DEFINITE
LOCATION OF TRUNK HIGHWAY NO. 61 FROM THE JUNCTION OF C.S.A.H. NO. 19
IN RED WING TO 3.0 MILES WEST.

As shown on this plat prepared by the State of Minnesota Department of Transportation is hereby certified as
the official plat of that portion of said T.H. 61 within the designated portion of Section 18
and the Commissioner's Order therefor, pursuant to Minnesota Statutes, section 161.16 subd. 2, section
160.14 subd. 1, section 160.085, and section 161.18.

Commissioner's Order No.	Location	Nature of Interest
79415	PLATS 25-21 AND 25-33 THRU 25-35	Definite location, width, access, temporary easement and building removal easement.

Certified by:
James N. Denn
Commissioner of Transportation
K. F. Rasmussen 8-11-93
by K.F. Rasmussen Date
Director, Office of Right of Way & Surveys

I hereby certify that this plat was prepared by me or under my direct supervision and that I am a duly
Registered Land Surveyor under the Laws of the State of Minnesota; that this plat meets requirements
of Minnesota Statutes, section 161.16, Subd. 2, section 160.14, Subd. 1, section 160.085, and section 161.18; that
parcel ownerships are correctly described and delineated on the plat; and that the proposed right-of-way
boundary lines are correctly designated on the plat.

Certified by: *B. E. Olson* 11-9-93 8-11-93
Registered Land Surveyor Reg. No. Date
Office of Right of Way & Surveys

I hereby certify that this plat was surveyed by me or under my direct supervision and that I am a duly
Registered Land Surveyor under the Laws of the State of Minnesota; that all measurements are correctly
shown on this plat; and that all monuments have been correctly placed as shown on this plat.

Certified by: *Regina A. Markung* 2-13-93 8-13-93
Registered Land Surveyor Reg. No. Date
M7007 District Office

SURVEY STANDARDS

- The plat values, azimuths, and distances are based on the project control survey system.
- The boundary monuments shown on this plat have been field checked for location. The standard deviation for the monument position is 0.10 feet.
- The county coordinates shown on one monument are based on files to national control monuments.
- Certificates of Location have been filed at the County Recorder's Office and/or the County Surveyor's Office for the section corner monuments shown on this plat.
- For details of this survey contact the Surveying and Mapping Section at the Minnesota Department of Transportation, ROCHESTER, Name of District

AZIMUTH ORIENTATION AND GRID CONVERSION

Plat azimuths are oriented to the County Coordinate System with 0 degrees
0 minutes 0 seconds being "GRID NORTH". Plat distances are ground lengths.

CONVENTIONAL SYMBOLS

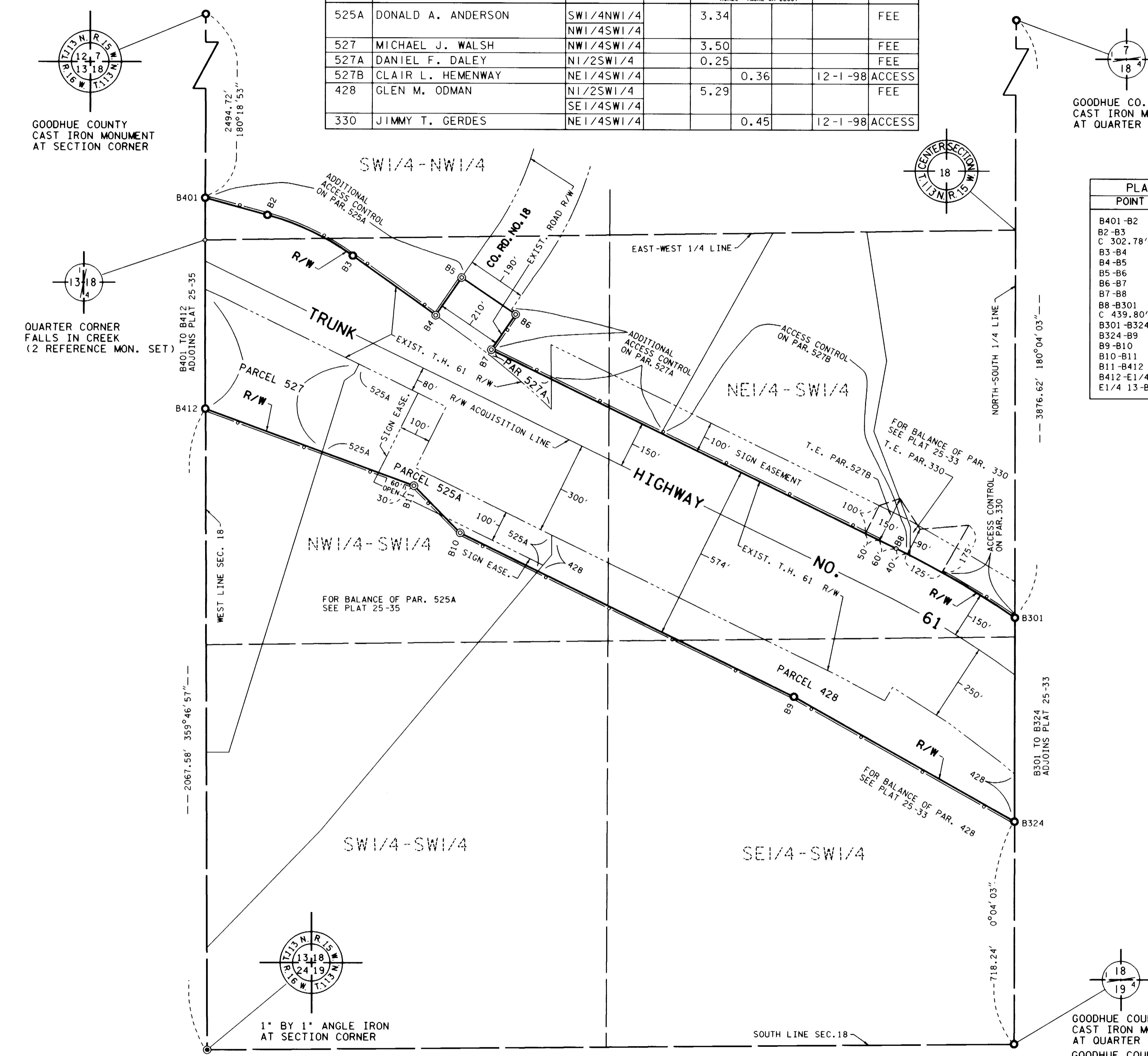
Section Line	Building Removal Easement	B. R. E.
Quarter Line	R/W Parcel Number	
Sixteenth Line	Access Control	
Property Line	Access Opening	open
R/W Boundary	Cast Iron Monument or 2"x2" D.O.T. Iron Pipe with Aluminum Cap	
Existing D.O.T. R/W Line	3/4" D.O.T. Iron Pin	
And Other Road R/W's	Other Iron Monument	
Railroad R/W	Concrete or Stone Monument	
Sign Easement	R/W Boundary Corner	
Temporary Easement		

DISTANCES SHOWN TO FEET (66, 80 ETC.) ARE EXTRINSIC VALUES.



RIGHT OF WAY IN SECTION 18						
PARCEL	OWNER	LOCATION	TORREN'S CERTIFICATE NO.	NEW T.H. R/W ACRES (MORE OR LESS)	TEMPORARY EASEMENT	BUILDING REMOVAL EASEMENT
525A	DONALD A. ANDERSON	SW1/4NW1/4		3.34		
527	MICHAEL J. WALSH	NW1/4SW1/4		3.50		
527A	DANIEL F. DALEY	N1/2SW1/4		0.25		
527B	CLAIR L. HEMENWAY	NE1/4SW1/4		0.36	12-1-98	ACCESS
428	GLEN M. ODMAN	N1/2SW1/4		5.29		
		SE1/4SW1/4				
330	JIMMY T. GERDES	NE1/4SW1/4		0.45	12-1-98	ACCESS

PLAT BOUNDARY DATA		
POINT	DISTANCE	AZIMUTH
B401-B2	206.51'	105°16'30"
B2-B3	Δ 20°28'56" R	851.51'
	C 302.78' CAZ 115°30'58" ARC	304.40'
B3-B4	328.07'	125°45'27"
B4-B5	147.46'	34°19'49"
B5-B6	210.01'	124°19'49"
B6-B7	138.41'	214°19'49"
B7-B8	1445.45'	116°11'16"
B8-B301	Δ 8°21'41" R	3016.38'
	C 439.80' CAZ 120°22'05" ARC	440.19'
B301-B324	657.25'	180°04'03"
B324-B9	810.69'	299°35'44"
B9-B10	1192.58'	296°11'16"
B10-B11	211.90'	315°28'40"
B11-B412	712.22'	290°17'49"
B412-E1/4 13	544.32'	359°46'57"
E1/4 13-B401	135.86'	0°18'53"



GOODHUE COUNTY
CAST IRON MONUMENT
AT QUARTER CORNER
GOODHUE COUNTY
COORDINATES
X = 622,758.78
Y = 243,068.68
DATUM = NAD 1983

DOC. NO. 365946
OFFICE OF COUNTY RECORDER
GOODHUE COUNTY, MINN.
I HEREBY CERTIFY THAT THIS PLAT
HAS BEEN FILED IN THIS OFFICE
AT 1:55 P.M. ON
AUG 13 1993
BY
COUNTY RECORDER