

MINNESOTA DEPARTMENT OF TRANSPORTATION
RIGHT OF WAY PLAT NO. 25-36

STATE PROJECT NO. 2510(58-58-21-2)
IN THE NORTH HALF OF SECTION 16, T. 111 N., R. 15 W.,
IN THE NORTH HALF OF SECTION 21, T. 111 N., R. 15 W.,
GOODHUE COUNTY, MINNESOTA

THE COMMISSIONER OF TRANSPORTATION IS HEREBY DESIGNATING THE DEFINITE LOCATION OF TRUNK HIGHWAY NO. 58 FROM GOODHUE TO 5.0 MILES NORTH

As shown on this plat prepared by the State of Minnesota Department of Transportation is hereby certified as the official plat of that portion of said T.H. 58 within the designated portion of Sections 16 & 21 and the Commissioner's Order therefor, pursuant to Minnesota Statutes, section 161.16 subd. 2, section 160.14 subd. 1, section 160.085, and section 161.18.

Commissioner's Order No. Location Nature of Interest
80001 PLATS 25-36 Definite location, width,
THRU 25-38, access, temporary ease-
25-40 & 25-41 ment and building
removal easement.

Certified by
James N. Denn
Commissioner of Transportation
by K.F. Rasmussen 3-18-94
Date
Director, Office of Right of Way & Surveys

I hereby certify that this plat was prepared by me or under my direct supervision and that I am a duly Registered Land Surveyor under the Laws of the State of Minnesota and that this plat meets requirements of Minnesota Statutes, section 161.16, Subd. 2, section 160.14, Subd. 1, section 160.085, and section 161.18; that parcel ownerships are correctly described and delineated on the plat, and that the proposed right-of-way boundary lines are correctly designated on the plat.

Certified by S. Eldon John 11933 3-18-94
Registered Land Surveyor Reg. No. Date
Office of Right of Way & Surveys

I hereby certify that this plat was surveyed by me or under my direct supervision and that I am a duly Registered Land Surveyor under the Laws of the State of Minnesota; that all measurements are correctly shown on this plat, and that all monuments have been correctly placed as shown on this plat.

Certified by Eugene A. Marburger 21357 3-23-94
Registered Land Surveyor Reg. No. Date
MnDOT District Office

SURVEY STANDARDS

- The plat values, azimuths, and distances are based on the project control survey system.
- The boundary monuments shown on this plat have been field checked for location. The standard deviation for the monument position is 0.10 feet.
- The state plane coordinates shown on one monument are based on ties to national control monuments.
- Certificates of Location have been filed at the County Recorder's Office and/or the County Surveyor's Office for the section corner monuments shown on this plat.
- For details of this survey contact the Surveying and Mapping Section at the Minnesota Department of Transportation
Rochester
Name of District

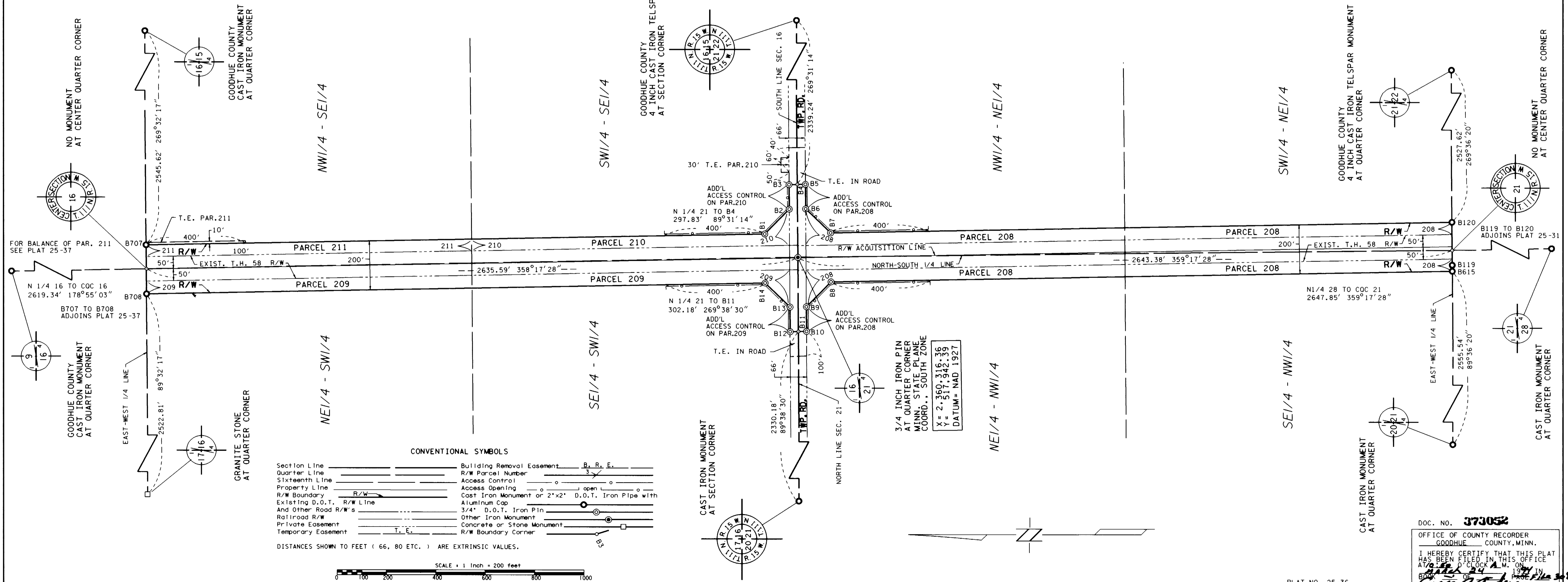
AZIMUTH ORIENTATION AND GRID CONVERSION

Plat azimuths are oriented to Minnesota State Plane Coordinate System with 0 degrees 0 minutes 0 seconds being 'GRID NORTH'.
Plat distances are ground lengths and can be converted to Minnesota State Plane Grid lengths by multiplying Plat distances by 0.9998794.

RIGHT OF WAY IN SECTION 16							
PARCEL	OWNER	LOCATION	TORREN'S CERTIFICATE NO.	NEW T.H. R/W ACRES (MORE OR LESS)	TEMPORARY EASEMENT	BUILDING REMOVAL EASEMENT	PERMANENT R/W INTEREST
209	VERONA LUHMAN	E1/2 SW1/4		3.22			FEE
210	GLEN L. DANKERS	SW1/4SE1/4		1.59	0.04		FEE
211	STHR FARMS, INC.	NW1/4SE1/4		1.46	0.09		FEE
RIGHT OF WAY IN SECTION 21							
208	LAVERNE W. DANKERS	NORTH 1/2		6.22			FEE

NOTE: TEMPORARY EASEMENTS IN PUBLIC ROADS WILL EXPIRE ON 12-01-99.

PLAT BOUNDARY DATA		
POINT	DISTANCE	AZIMUTH
B707-B1	2502.56'	178°55'28"
B1-B2	142.16'	134°13'21"
B2-B3	100.00'	89°31'14"
B3-B4	33.00'	178°55'28"
B4-B5	33.00'	178°55'28"
B5-B6	100.00'	269°31'14"
B6-B7	140.68'	224°13'21"
B7-B120	2510.67'	178°55'28"
B120-COC 21	114.75'	269°36'20"
COC 21-B119	60.26'	269°36'20"
B119-B615	25.00'	269°36'20"
B615-B8	2510.59'	358°55'28"
B8-B9	142.30'	314°16'59"
B9-B10	100.00'	269°38'30"
B10-B11	33.00'	358°55'28"
B11-B12	33.00'	358°55'28"
B12-B13	100.00'	89°38'30"
B13-B14	140.53'	44°16'59"
B14-B708	2502.40'	358°55'28"
B708-COC 16	101.87'	89°32'17"
COC 16-B707	98.14'	89°32'17"



DOC. NO. 373052
OFFICE OF COUNTY RECORDER
GOODHUE COUNTY, MINN.
I HEREBY CERTIFY THAT THIS PLAT
HAS BEEN FILED IN THIS OFFICE
AT 10:00 O'CLOCK A.M. ON
MAY 24 1994
COUNTY RECORDER