

# MINNESOTA DEPARTMENT OF TRANSPORTATION RIGHT OF WAY PLAT NO. 25-37

STATE PROJECT NO. 2510(58-58-21-2)  
IN THE SOUTH HALF OF SECTION 9, T. 111 N., R. 15 W.,  
IN THE NORTH HALF OF SECTION 16, T. 111 N., R. 15 W.,  
GOODHUE COUNTY, MINNESOTA

THE COMMISSIONER OF TRANSPORTATION IS HEREBY DESIGNATING THE DEFINITE  
LOCATION OF TRUNK HIGHWAY NO. 58 FROM GOODHUE TO 5.0 MILES NORTH

As shown on this plat prepared by the State of Minnesota Department of Transportation is hereby certified as the official plat of that portion of said T.H. 58 within the designated portion of Sections 9 & 16 and the Commissioner's Order therefor, pursuant to Minnesota Statutes, section 161.16 subd. 2, section 160.14 subd. 1, section 160.085, and section 161.18.

Commissioner's Order No.	Location	Nature of Interest
80001	PLATS 25-36 THRU 25-38, 25-40 & 25-41	Definite location, width, access, temporary ease- ment and building removal easement.

Certified by

James N. Denn  
Commissioner of Transportation

*K.F. Rasmussen* 3-11-94  
Date

by K.F. Rasmussen  
Director, Office of Right of Way & Surveys

I hereby certify that this plat was prepared by me or under my direct supervision and that I am a duly Registered Land Surveyor under the Laws of the State of Minnesota, that this plat meets requirements of Minnesota Statutes, section 161.15, Subd. 2, section 160.14, Subd. 1, section 160.085, and section 161.18, that parcel ownerships are correctly described and delineated on the plat, and that the proposed right-of-way boundary lines are correctly designated on the plat.

Certified by *S. Eldon Joly* 11933 3-18-94  
Registered Land Surveyor Reg. No. Date  
Office of Right of Way & Surveys

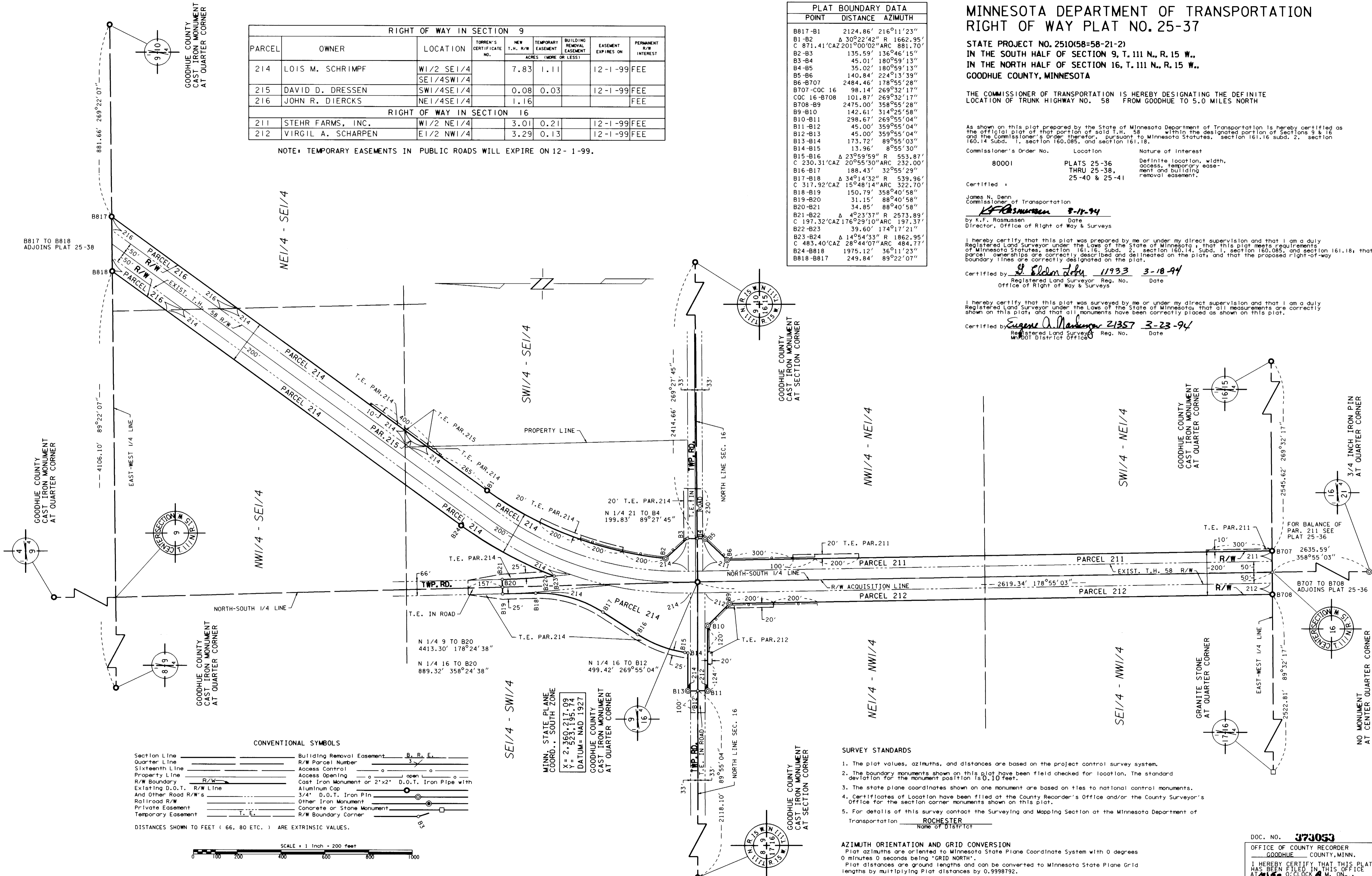
I hereby certify that this plat was surveyed by me or under my direct supervision and that I am a duly Registered Land Surveyor under the Laws of the State of Minnesota, that all measurements are correctly shown on this plat, and that all monuments have been correctly placed as shown on this plat.

Certified by *Eugene A. Marburger* 21357 3-23-94  
Registered Land Surveyor Reg. No. Date  
Mapot District Office

PLAT BOUNDARY DATA		
POINT	DISTANCE	AZIMUTH
B817-B1	2124.86'	216°11'23"
B1-B2	Δ 30°22'42" R 1662.95'	
C 871.41'CAZ	201°00'02"ARC	881.70'
B2-B3	135.59'	136°46'15"
B3-B4	45.01'	180°59'13"
B4-B5	35.02'	180°59'13"
B5-B6	140.84'	224°13'39"
B6-B707	2484.46'	178°55'28"
B707-COC 16	98.14'	269°32'17"
COC 16-B708	101.87'	269°32'17"
B708-B9	2475.00'	358°55'28"
B9-B10	142.61'	314°25'58"
B10-B11	298.67'	269°55'04"
B11-B12	45.00'	359°55'04"
B12-B13	45.00'	359°55'04"
B13-B14	173.72'	89°55'03"
B14-B15	13.96'	8°55'30"
B15-B16	Δ 23°59'59" R 553.87'	
C 230.31'CAZ	20°55'30"ARC	232.00'
B16-B17	188.43'	32°55'29"
B17-B18	Δ 34°14'32" R 539.96'	
C 317.92'CAZ	15°48'14"ARC	322.70'
B18-B19	150.79'	358°40'58"
B19-B20	31.15'	88°40'58"
B20-B21	34.85'	88°40'58"
B21-B22	Δ 49°23'37" R 2573.89'	
C 197.32'CAZ	176°29'10"ARC	197.37'
B22-B23	39.60'	174°17'21"
B23-B24	Δ 14°54'33" R 1862.95'	
C 483.40'CAZ	28°44'07"ARC	484.77'
B24-B818	1975.12'	36°11'23"
B818-B817	249.84'	89°22'07"

RIGHT OF WAY IN SECTION 9								
PARCEL	OWNER	LOCATION	TORREN'S CERTIFICATE NO.	NEW T.H. R/W ACRES (MORE OR LESS)	TEMPORARY EASEMENT	BUILDING REMOVAL EASEMENT	EASEMENT EXPIRES ON	PERMANENT R/W INTEREST
214	LOIS M. SCHRIMPF	W1/2 SE1/4 SE1/4SW1/4		7.83	1.11		12-1-99	FEE
215	DAVID D. DRESSEN	SW1/4SE1/4		0.08	0.03		12-1-99	FEE
216	JOHN R. DIERCKS	NE1/4SE1/4		1.16				FEE
RIGHT OF WAY IN SECTION 16								
211	STEHR FARMS, INC.	W1/2 NE1/4		3.01	0.21		12-1-99	FEE
212	VIRGIL A. SCHARPEN	E1/2 NW1/4		3.29	0.13		12-1-99	FEE

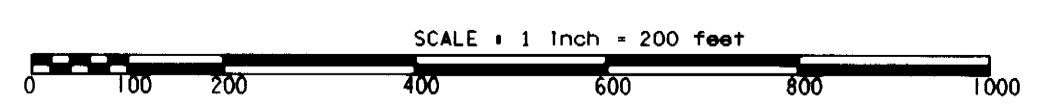
NOTE: TEMPORARY EASEMENTS IN PUBLIC ROADS WILL EXPIRE ON 12-1-99.



CONVENTIONAL SYMBOLS

Section Line	Building Removal Easement	B, R, E
Quarter Line	R/W Parcel Number	3
Sixteenth Line	Access Control	o
Property Line	Access Opening	open
R/W Boundary	Cast Iron Monument or 2"x2" D.O.T. Iron Pipe with Aluminum Cap	○
Existing D.O.T. R/W Line	3/4" D.O.T. Iron Pin	○
And Other Road R/W's	Other Iron Monument	○
Railroad R/W	Concrete or Stone Monument	○
Private Easement	R/W Boundary Corner	○
Temporary Easement		

DISTANCES SHOWN TO FEET ( 66, 80 ETC. ) ARE EXTRINSIC VALUES.



MINN. STATE PLANE  
COORD. - SOUTH ZONE  
X = 2,369,217.09  
Y = 523,195.09  
DATUM = NAD 1927

### SURVEY STANDARDS

- The plat values, azimuths, and distances are based on the project control survey system.
- The boundary monuments shown on this plat have been field checked for location. The standard deviation for the monument position is 0.10 feet.
- The state plane coordinates shown on one monument are based on ties to national control monuments.
- Certificates of Location have been filed at the County Recorder's Office and/or the County Surveyor's Office for the section corner monuments shown on this plat.
- For details of this survey contact the Surveying and Mapping Section at the Minnesota Department of Transportation  
ROCHESTER  
Name of District

### AZIMUTH ORIENTATION AND GRID CONVERSION

Plat azimuths are oriented to Minnesota State Plane Coordinate System with 0 degrees 0 minutes 0 seconds being "GRID NORTH".  
Plat distances are ground lengths and can be converted to Minnesota State Plane Grid lengths by multiplying Plat distances by 0.9998792.

DOC. NO. 373053  
OFFICE OF COUNTY RECORDER  
GOODHUE COUNTY, MINN.  
I HEREBY CERTIFY THAT THIS PLAT  
HAS BEEN FILED IN THIS OFFICE  
AT 10:00 O'CLOCK A.M. ON  
MAY 24 1994  
BOB J. [Signature]  
COUNTY RECORDER

PLAT NO. 25-37  
S.P. 2510(58-58-21-2)