

MINNESOTA DEPARTMENT OF TRANSPORTATION
RIGHT OF WAY PLAT NO. 25-40

STATE PROJECT NO. 2510(58-58-21-2)
IN THE NORTH HALF OF SECTION 2, T. 111 N., R. 15 W.,
GOODHUE COUNTY, MINNESOTA

THE COMMISSIONER OF TRANSPORTATION IS HEREBY DESIGNATING THE DEFINITE
LOCATION OF TRUNK HIGHWAY NO. 58 FROM GOODHUE TO 5.0 MILES NORTH

As shown on this plat prepared by the State of Minnesota Department of Transportation is hereby certified as the official plat of that portion of said T.H. 58 within the designated portion of Section 2 and the Commissioner's Order therefor, pursuant to Minnesota Statutes, section 161.16 subd. 2, section 160.14 subd. 1, section 160.085, and section 161.18.

Commissioner's Order No.	Location	Nature of Interest
80001	PLATS 25-36 THRU 25-38, 25-40 & 25-41	Definite location, width, access, temporary ease- ment and building removal easement.

Certified by

James N. Denn
Commissioner of Transportation
J. N. Denn 3-11-94

by K.F. Rasmussen Date
Director, Office of Right of Way & Surveys

I hereby certify that this plat was prepared by me or under my direct supervision and that I am a duly Registered Land Surveyor under the Laws of the State of Minnesota, that this plat meets requirements of Minnesota Statutes, section 161.16, subd. 2, section 160.14, subd. 1, section 160.085, and section 161.18; that parcel ownerships are correctly described and delineated on the plat; and that the proposed right-of-way boundary lines are correctly designated on the plat.

Certified by *S. Edman John* 11933 3-18-94
Registered Land Surveyor Reg. No. Date
Office of Right of Way & Surveys

I hereby certify that this plat was surveyed by me or under my direct supervision and that I am a duly Registered Land Surveyor under the Laws of the State of Minnesota, that all measurements are correctly shown on this plat; and that all monuments have been correctly placed as shown on this plat.

Certified by *Ernest A. Marburger* 21357 3-18-94
Registered Land Surveyor Reg. No. Date
MNDOT District Office

SURVEY STANDARDS

- The plat values, azimuths, and distances are based on the project control survey system.
- The boundary monuments shown on this plat have been field checked for location. The standard deviation for the monument position is 0.10 feet.
- The state plane coordinates shown on one monument are based on ties to national control monuments.
- Certificates of Location have been filed at the County Recorder's Office and/or the County Surveyor's Office for the section corner monuments shown on this plat.
- For details of this survey contact the Surveying and Mapping Section at the Minnesota Department of Transportation ROCHESTER
Name of District

AZIMUTH ORIENTATION AND GRID CONVERSION

Plat azimuths are oriented to Minnesota State Plane Coordinate System with 0 degrees 0 minutes 0 seconds being 'GRID NORTH'.
Plat distances are ground lengths and can be converted to Minnesota State Plane Grid lengths by multiplying Plat distances by 0.9998794.

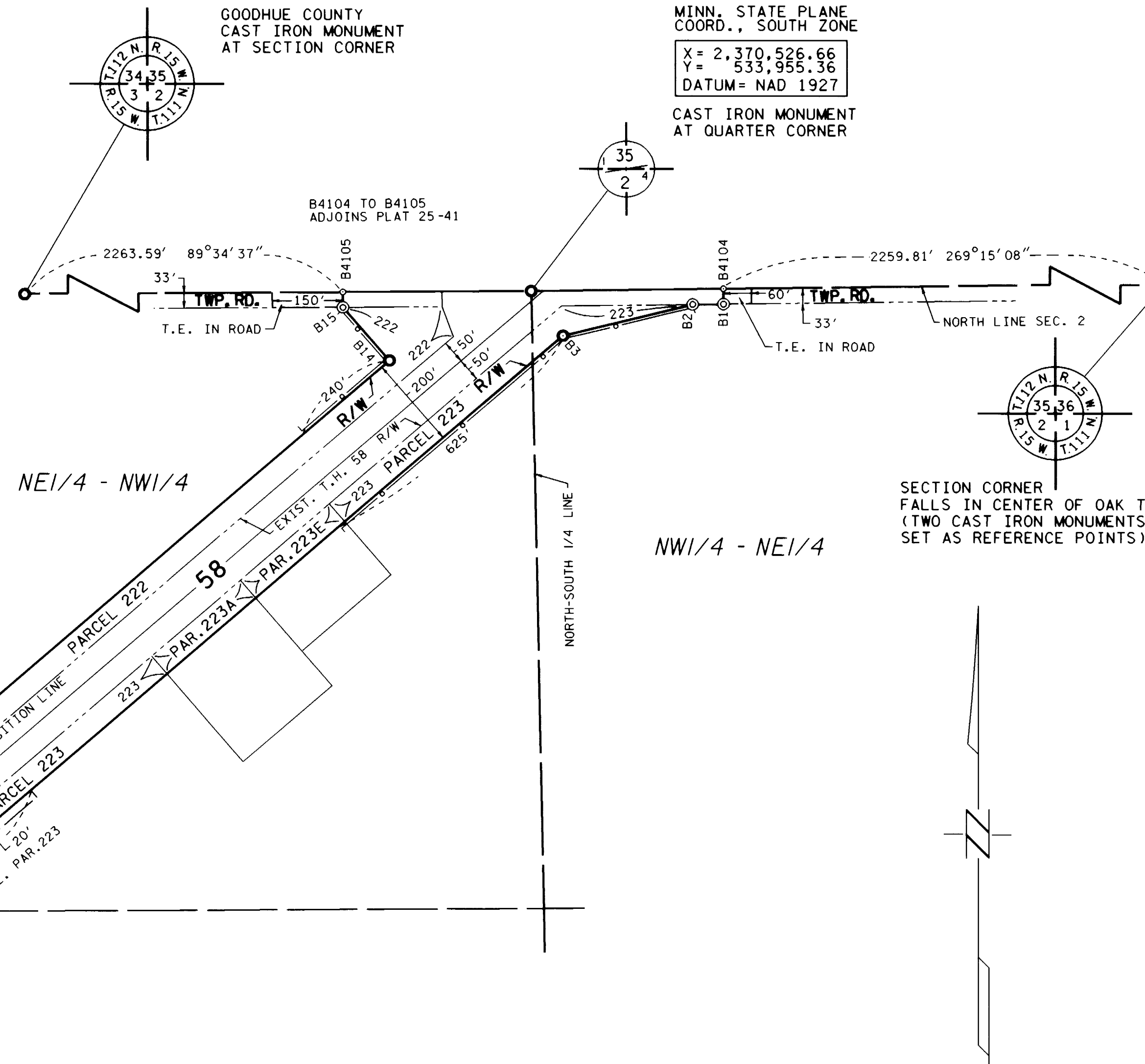
CONVENTIONAL SYMBOLS

Section Line	Building Removal Easement	B. R. E.
Quarter Line	R/W Parcel Number	3
Sixteenth Line	Access Control	o
Property Line	Access Opening	o
R/W Boundary	Cast Iron Monument or 2"x2" D.O.T. Iron Pipe with Aluminum Cap	o
Existing D.O.T. R/W Line	3/4" D.O.T. Iron Pin	o
And Other Road R/W's	Other Iron Monument	o
Railroad R/W	Concrete or Stone Monument	o
Private Easement	Concrete or Stone Monument	o
Temporary Easement	R/W Boundary Corner	o

DISTANCES SHOWN TO FEET (66, 80 ETC.) ARE EXTRINSIC VALUES.

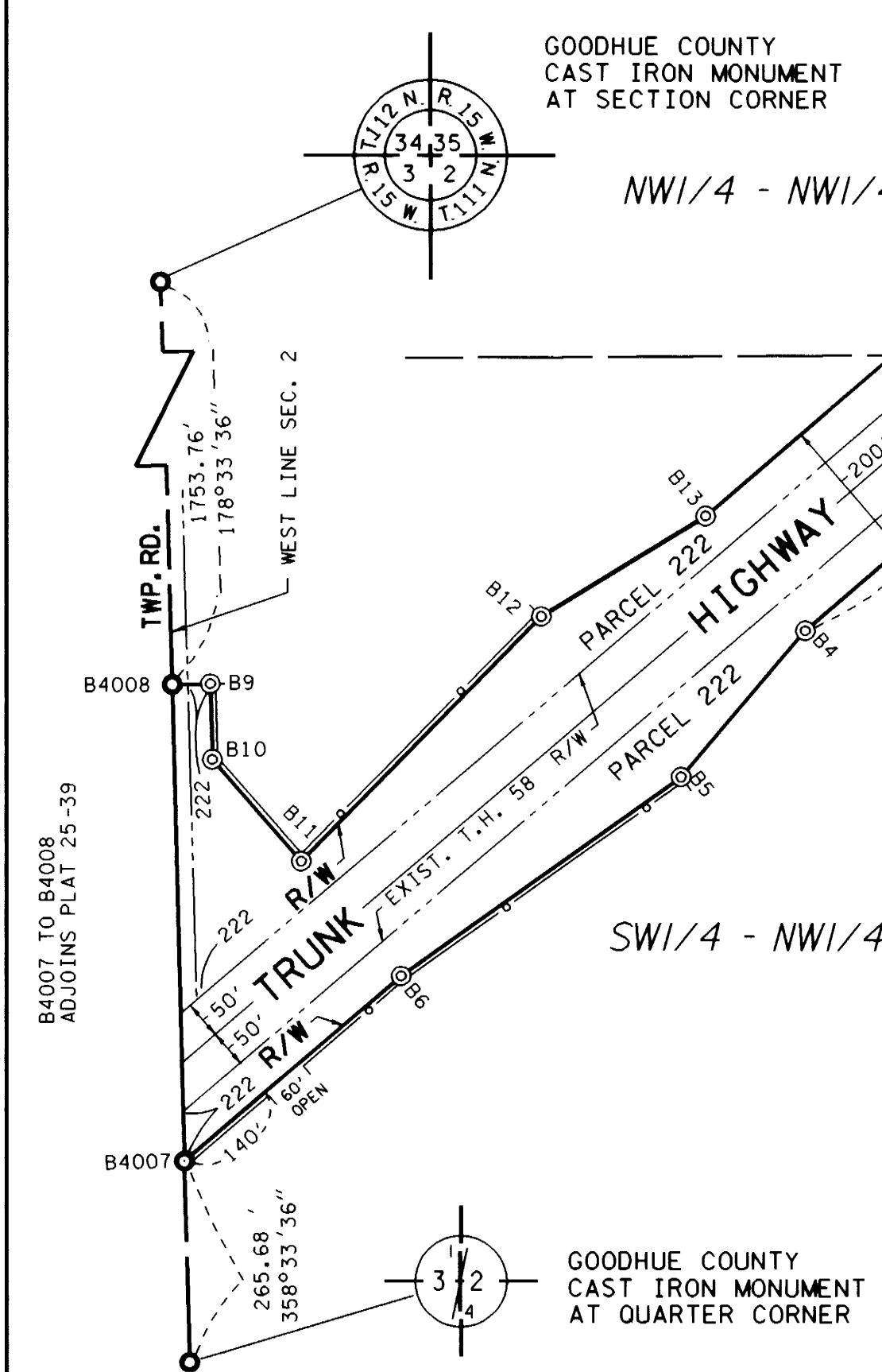


PLAT BOUNDARY DATA		
POINT	DISTANCE	AZIMUTH
N1/4 2-B4104	408.45'	89°15'08"
B4104-B1	33.00'	179°15'08"
B1-B2	65.45'	269°15'08"
B2-B3	283.93'	256°09'11"
B3-B4	2454.34'	229°11'55"
B4-B5	253.18'	220°06'30"
B5-B6	451.77'	234°16'42"
B6-B4007	374.64'	229°11'55"
B4007-B4008	629.76'	358°33'36"
B4008-B9	50.00'	88°33'36"
B9-B10	100.00'	178°33'36"
B10-B11	177.88'	139°11'55"
B11-B12	451.77'	44°07'09"
B12-B13	253.18'	58°17'20"
B13-B14	2140.00'	49°11'55"
B14-B15	151.29'	319°11'55"
B15-B4105	33.00'	359°34'37"
B4105-N1/4 2	400.03'	89°34'37"



RIGHT OF WAY IN SECTION 2							
PARCEL	OWNER	LOCATION	TORREN'S CERTIFICATE NO.	NEW T.H. R/W ACRES (MORE OR LESS)	TEMPORARY EASEMENT (MORE OR LESS)	BUILDING REMOVAL EASEMENT EXPIRES ON	PERMANENT R/W INTEREST
222	HARLAN L. STEHR	NW 1/4		7.11	0.04	12-1-99	FEE
223	JOHN R. DIERCKS	NE 1/4NW 1/4 NW 1/4NE 1/4		1.71	0.15	12-1-99	FEE
223A	WILLIAM C. SUTTER	NE 1/4NW 1/4		0.29			FEE
223E	DAVID M. MILLER	NE 1/4NW 1/4		0.29			FEE

NOTE: TEMPORARY EASEMENTS IN PUBLIC ROADS WILL EXPIRE ON 12-1-99.



DOC. NO. **373055**
OFFICE OF COUNTY RECORDER
GOODHUE COUNTY, MINN.
I HEREBY CERTIFY THAT THIS PLAT
HAS BEEN FILED IN THIS OFFICE
AT ROCHESTER M. ON 3-18-94
BOOK 114 PAGE 114
Ernest A. Marburger
COUNTY RECORDER

PLAT NO. 25-40
S.P. 2510(58-58-21-2)