

RIGHT OF WAY IN SECTION 35							
PARCEL	OWNER	LOCATION	TORREN'S CERTIFICATE NO.	NEW T.H. R/W		BUILDING REMOVAL EASEMENT	PERMANENT R/W INTEREST
				ACRES (MORE OR LESS)	ACRES (MORE OR LESS)		
224	MURLAND BUCK	SE1/4		7.42	0.76		FEE
224A	WILLARD B. SCHULZ	SE1/4SW1/4		1.15			FEE

NOTE: TEMPORARY EASEMENTS IN PUBLIC ROADS WILL EXPIRE ON 12-1-99.

PLAT BOUNDARY DATA		
POINT	DISTANCE	AZIMUTH
B4219-B1	1035.01'	234°23'40"
B1-B2	1932.40'	229°11'55"
B2-B3	120.30'	139°11'55"
B3-B4104	33.00'	179°15'08"
B4104-N1/4 2	408.45'	269°15'08"
N1/4 2-B4105	400.03'	269°34'37"
B4105-B6	33.00'	359°34'37"
B6-B7	150.00'	269°34'37"
B7-B8	790.16'	71°24'49"
B8-B9	1932.40'	49°11'55"
B9-B10	171.97'	43°21'29"
B10-B11	778.48'	56°09'28"
B11-B4220	238.63'	58°30'17"
B4220-B4219	232.10'	178°59'44"

MINNESOTA DEPARTMENT OF TRANSPORTATION RIGHT OF WAY PLAT NO. 25-41

STATE PROJECT NO. 2510(58-58-21-2)
IN THE SOUTH HALF OF SECTION 35, T. 112 N., R. 15 W.,
GOODHUE COUNTY, MINNESOTA

THE COMMISSIONER OF TRANSPORTATION IS HEREBY DESIGNATING THE DEFINITE LOCATION OF TRUNK HIGHWAY NO. 58 FROM GOODHUE TO 5.0 MILES NORTH

as shown on this plat prepared by the State of Minnesota Department of Transportation is hereby certified as the official plat of that portion of said T.H. within the designated portion of Section 35 and the Commissioner's Order therefor, pursuant to Minnesota Statutes, section 160.085, section 160.14 subd. 1, section 161.16 subd. 2, and section 161.18.

Commissioner's Order No.	Location	Nature of Interest
80001	PLATS 25-36 THRU 25-38, 25-40 & 25-41	Definite location, width, access, temporary easement and building removal easement.

Certified by
James N. Denn
Commissioner of Transportation
K.F. Rasmussen 3-18-94
by K.F. Rasmussen Date
Director, Office of Right of Way and Surveys

I hereby certify that this plat was prepared by me or under my direct supervision and that I am a duly Registered Land Surveyor under the Laws of the State of Minnesota; that this plat meets requirements of Minnesota Statutes, section 160.085, section 160.14 subd. 1, section 161.16 subd. 2, and section 161.18; that parcel ownerships are correctly described and delineated on the plat; and that the proposed right-of-way boundary lines are correctly designated on the plat.

Certified by *B. Edman Lohy* 11933 3-18-94
Registered Land Surveyor License No. Date
Office of Right of Way and Surveys

I hereby certify that this plat was surveyed by me or under my direct supervision and that I am a duly Registered Land Surveyor under the Laws of the State of Minnesota; that all measurements are correctly shown on this plat; and that all monuments have been correctly placed as shown on this plat.

Certified by *Ernest O. Marburger* 21357 3-23-94
Registered Land Surveyor License No. Date
MPOD District Office

AZIMUTH ORIENTATION AND GRID CONVERSION

Plat azimuths are oriented to Minnesota State Plane Coordinate System with 0 degrees 0 minutes 0 seconds being "GRID NORTH".
Plat distances are ground lengths and can be converted to Minnesota State Plane Grid lengths by multiplying Plat distances by 0.9998794.

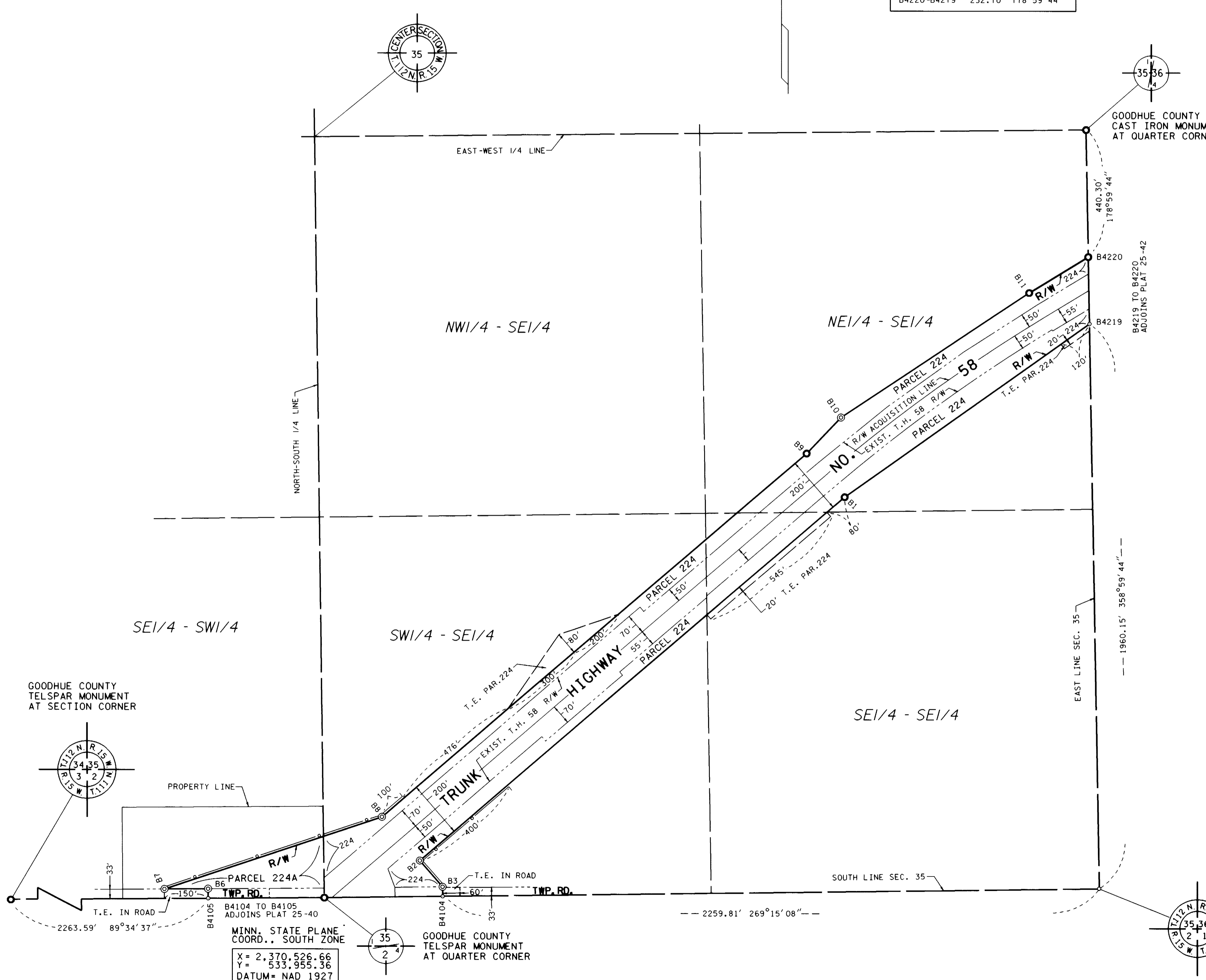
SURVEY STANDARDS

- The plat values, azimuths, and distances are based on the project control survey system.
- The boundary monuments shown on this plat have been field checked for location. The standard deviation for the monument position is 0.10 feet.
- The state plane coordinates shown on one monument are based on ties to national control monuments.
- Certificates of Location have been filed at the County Recorder's Office and/or the County Engineer's Office for the section corner monuments shown on this plat.
- For details of this survey contact the Surveying and Mapping Section at the Minnesota Department of Transportation
ROCHESTER
Name of District

CONVENTIONAL SYMBOLS

Section Line	Building Removal Easement	B. R. E.
Quarter Line	R/W Parcel Number	3
Sixteenth Line	Access Control	
Property Line	Access Opening	open
R/W Boundary	Cast Iron Monument or 2"x2" D.O.T. Iron Pipe with	
Existing D.O.T. R/W Line	Aluminum Cap	
And Other Road R/W's	3/4" D.O.T. Iron Pin	
Railroad R/W	Other Iron Monument	
Private Easement	Concrete or Stone Monument	
Temporary Easement	R/W Boundary Corner	

DISTANCES SHOWN TO FEET (66, 80 ETC.) ARE EXTRINSIC VALUES.



MINN. STATE PLANE
COORD. SOUTH ZONE
X = 2,370,526.66
Y = 533,955.36
DATUM = NAD 1927

GOODHUE COUNTY
TELSPAR MONUMENT
AT QUARTER CORNER

SECTION CORNER
FALLS IN CENTER OF OAK TREE
(TWO CAST IRON MONUMENTS
SET AS REFERENCE POINTS)

DOC. NO. 373056
OFFICE OF COUNTY RECORDER
GOODHUE COUNTY, MINN.
I HEREBY CERTIFY THAT THIS PLAT
HAS BEEN FILED IN THIS OFFICE
AT 10:00 O'CLOCK A.M. ON
MAY 24 1994
COUNTY RECORDER

PLAT NO. 25-41
S.P. 2510(58-58-21-2)