

MINNESOTA DEPARTMENT OF TRANSPORTATION
RIGHT OF WAY PLAT NO. 25-42

STATE PROJECT NO. 2510(58-58-21-2)
IN THE SOUTHEAST QUARTER OF SECTION 25, T. 112 N., R. 15 W.,
IN SECTION 36, T. 112 N., R. 15 W.,
GOODHUE COUNTY, MINNESOTA

THE COMMISSIONER OF TRANSPORTATION IS HEREBY DESIGNATING THE DEFINITE LOCATION OF TRUNK HIGHWAY NO. 58 FROM 5.0 MILES TO 6.0 MILES NORTH OF GOODHUE.

As shown on this plat prepared by the State of Minnesota Department of Transportation is hereby certified as the official plat of that portion of said Highway No. 58 within the designated portion of sections 25 & 36 and the Commissioner's Order therefor, pursuant to Minnesota Statutes, section 160.085, section 160.14 subd. 1, section 161.16, subd. 2, and section 161.18.

Commissioner's Order No. 79481 Location PLAT 25-42 Nature of Interest Definite location, width, access, temporary easement and building removal easement.

Certified by James N. Denn, Commissioner of Transportation, by K.F. Rasmussen, Director, Office of Right of Way & Surveys, dated 12-4-93.

I hereby certify that this plat was prepared by me or under my direct supervision and that I am a duly Registered Land Surveyor under the Laws of the State of Minnesota; that this plat meets requirements of Minnesota Statutes, section 160.085, section 160.14, Subd. 1, section 161.16, subd. 2, and section 161.18; that parcel ownerships are correctly described and delineated on the plat; and that the proposed right-of-way boundary lines are correctly designated on the plat.

Certified by Eldon John, Registered Land Surveyor, Reg. No. 11933, dated 12-14-93, Office of Right of Way & Surveys.

I hereby certify that this plat was surveyed by me or under my direct supervision and that I am a duly Registered Land Surveyor under the Laws of the State of Minnesota; that all measurements are correctly shown on this plat; and that all monuments have been correctly placed as shown on this plat.

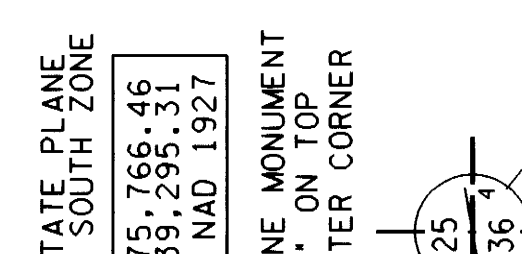
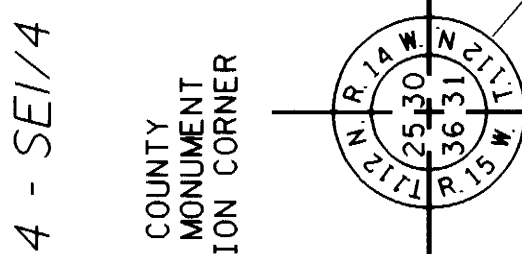
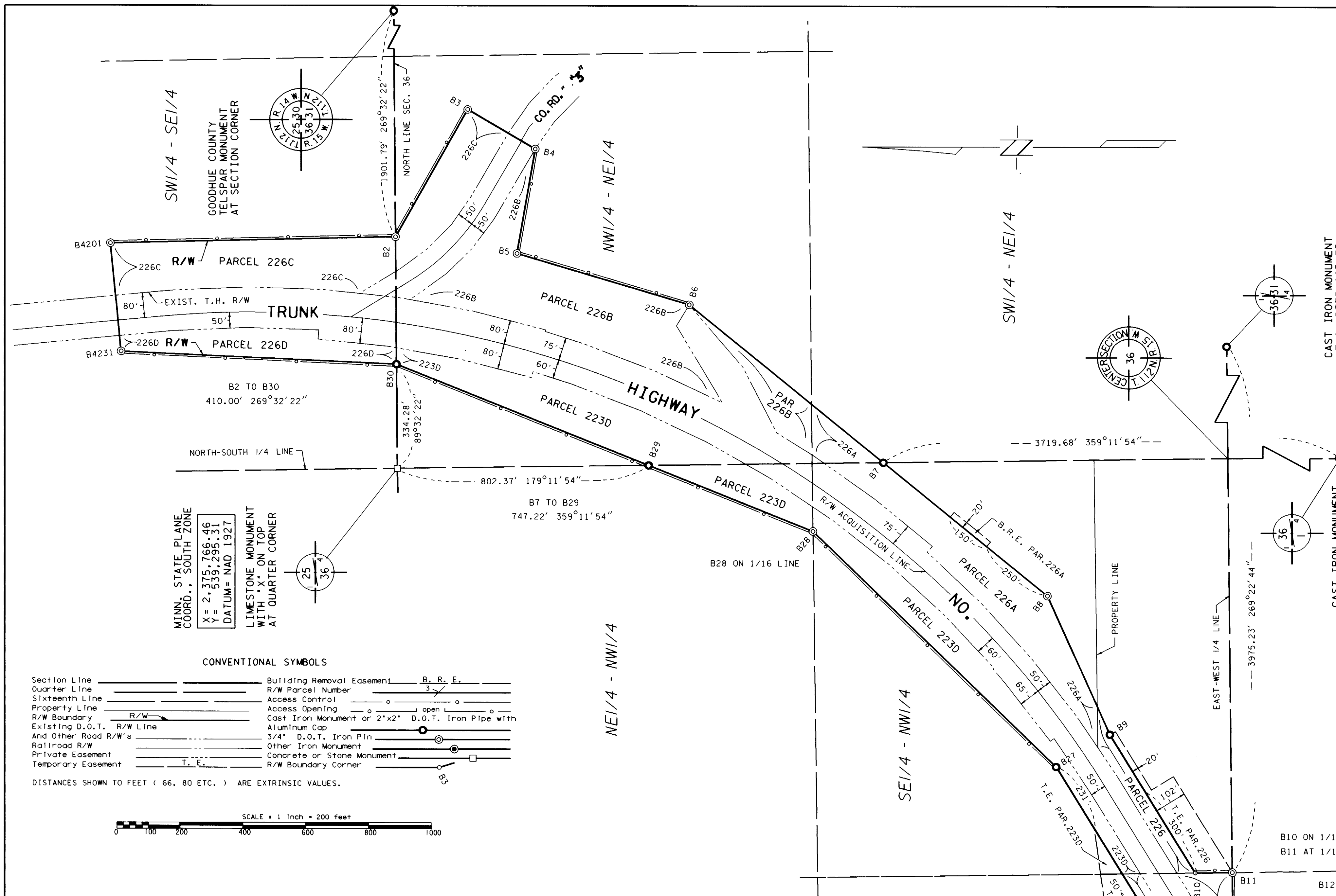
Certified by Eugene A. Marburg, Registered Land Surveyor, Reg. No. 21357, dated 12-16-93, District Office.

SURVEY STANDARDS

- The plat values, azimuths, and distances are based on the project control survey system.
- The boundary monuments shown on this plat have been field checked for location. The standard deviation for the monument position is 0.10 foot.
- The state plane coordinates shown on one monument are based on ties to national control monuments.
- Certificates of Location have been filed at the County Recorder's Office and/or the County Surveyor's Office for the section corner monuments shown on this plat.
- For details of this survey contact the Surveying and Mapping Section of the Minnesota Department of Transportation in Rochester, Name of District.

AZIMUTH ORIENTATION AND GRID CONVERSION

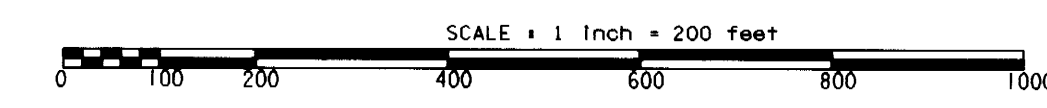
Plat azimuths are oriented to Minnesota State Plane Coordinate System with 0 degree 0 minute 0 second being "GRID NORTH". Plat distances are ground lengths and can be converted to Minnesota State Plane Grid lengths by multiplying plat distances by 0.9998794.



CONVENTIONAL SYMBOLS

- Section Line
- Quarter Line
- Sixteenth Line
- Property Line
- R/W Boundary
- Existing D.O.T. R/W Line
- And Other Road R/W's
- Railroad R/W
- Private Easement
- Temporary Easement
- Building Removal Easement
- R/W Parcel Number
- Access Control
- Access Opening
- Cast Iron Monument or 2"x2" Aluminum Cap
- 3/4" D.O.T. Iron Pin
- Other Iron Monument
- Concrete or Stone Monument
- R/W Boundary Corner

DISTANCES SHOWN TO FEET (66, 80 ETC.) ARE EXTRINSIC VALUES.



RIGHT OF WAY IN SECTION 36						
PARCEL	OWNER	LOCATION	TORREN'S CERTIFICATE NO.	NEW T.H. R/W ACRES (MORE OR LESS)	TEMPORARY EASEMENT	PERMANENT R/W INTEREST
223B	ARLAN A. JOHNSON	NW1/4SW1/4		2.88		FEE
223C	PAUL W. LAWRENCE	NW1/4SW1/4		0.26	0.06	FEE
223D	JOHN R. DIERCKS	E1/2NW1/4		6.49	0.11	FEE
225	DOROTHY L. KOLBERG	SW1/4NW1/4		1.32	0.75	FEE
226	JAMES R. HINSCH	SE1/4NW1/4		0.74	0.87	FEE
226A	EDMUND L. KEIMIG	NW1/4SW1/4		3.71	0.07	FEE
226B	CURTIS F. KLINE	SW1/4NE1/4		5.53		FEE
RIGHT OF WAY IN SECTIONS 25 & 36						
226C	ORVILLE AUGUSTIN	SW1/4SE1/4 SEC. 25		4.88		FEE
		NW1/4NE1/4 SEC. 36				
RIGHT OF WAY IN SECTION 25						
226D	CLEMANCE B. FINSTAD	SW1/4SE1/4		1.56		FEE

NOTE: TEMPORARY EASEMENTS IN PUBLIC ROADS WILL EXPIRE ON 12-1-99.

PLAT BOUNDARY DATA		
POINT	DISTANCE	AZIMUTH
B4201-B2	907.14'	178°41'14"
B2-B3	469.04'	119°26'29"
B3-B4	250.00'	210°19'36"
B4-B5	340.39'	279°54'26"
B5-B6	573.65'	196°35'44"
B6-B7	798.42'	219°17'41"
B7-B8	673.53'	219°17'41"
B8-B9	486.79'	245°56'09"
B9-B10	519.70'	238°30'17"
B10-B11	118.56'	179°09'59"
B11-B12	198.75'	269°22'44"
B12-B13	145.83'	238°30'17"
B13-B14	458.66'	176°11'52"
B14-B15	40.00'	86°11'52"
B15-B16	45.60'	176°11'52"
B16-B17	170.00'	266°11'52"
B17-B18	386.09'	328°30'17"
B18-B4219	815.00'	238°30'17"
B4219-B4220	232.10'	358°59'44"
B4220-B21	697.23'	58°30'17"
B21-B22	64.60'	328°30'17"
B22-B23	27.05'	359°18'19"
B23-B24	38.95'	359°18'19"
B24-B25	85.54'	89°18'19"
B25-B26	241.54'	77°13'05"
B26-B27	910.00'	58°30'17"
B27-B28	1080.83'	44°19'15"
B28-B29	563.63'	21°51'57"
B29-B30	867.38'	21°51'57"
B30-B4231	877.27'	2°40'08"
B4231-B4201	350.00'	84°26'43"

DOC. NO. 370058
OFFICE OF COUNTY RECORDER
GOODHUE COUNTY, MINN.
I HEREBY CERTIFY THAT THIS PLAT HAS BEEN FILED IN THIS OFFICE AT 12:30 P.M. ON 12-16-93
Eugene A. Marburg
COUNTY RECORDER