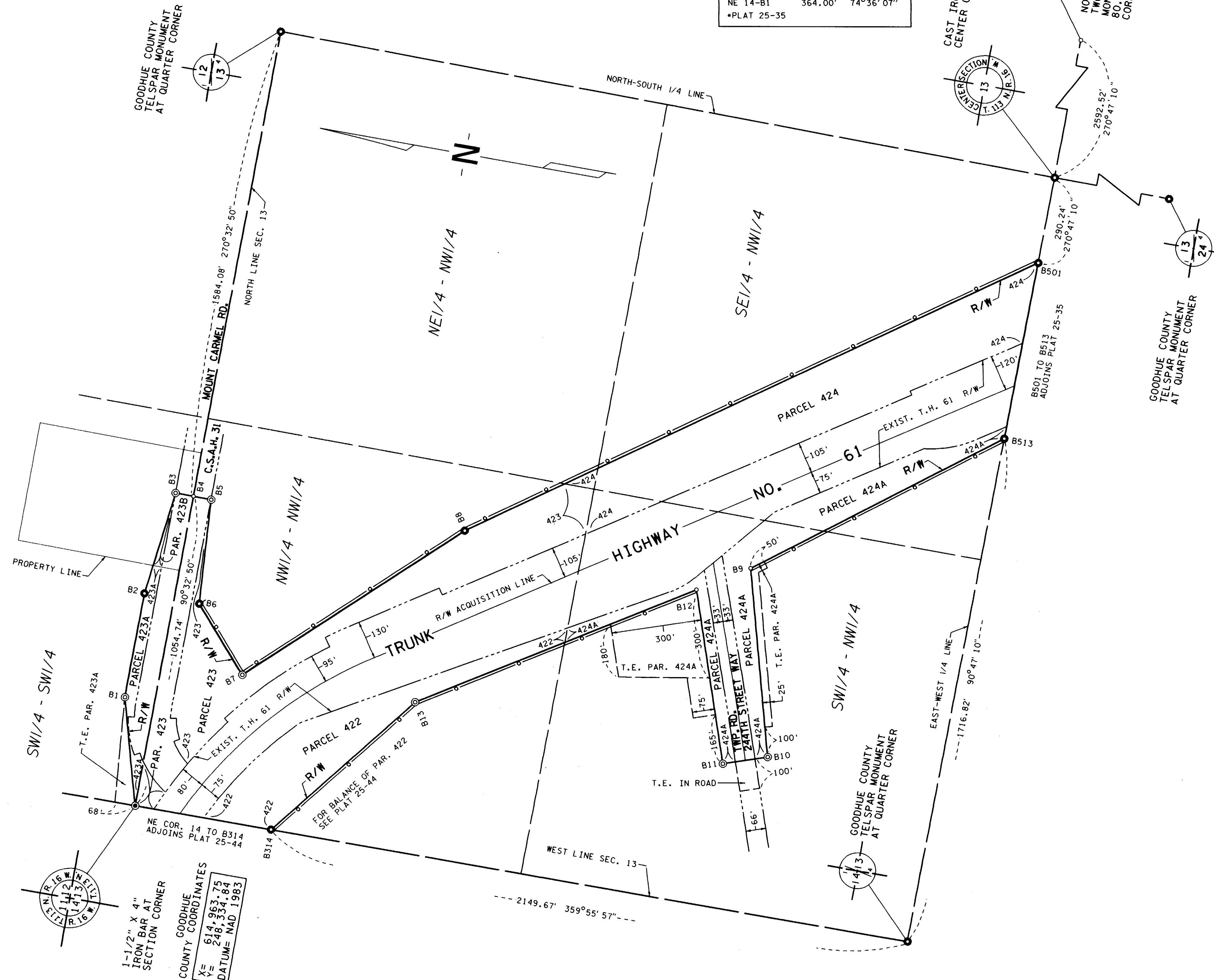


RIGHT OF WAY IN SECTION 12								
PARCEL	OWNER	LOCATION	TORREN'S CERTIFICATE NO.	NEW T.H. R/W ACRES (MORE OR LESS)	TEMPORARY EASEMENT	BUILDING REMOVAL EASEMENT	EASEMENT EXPIRES ON	PERMANENT R/W INTEREST
423A	DARNELL DELILAH SMITH	SW1/4SW1/4		0.53	0.27		12-1-00	FEE
423B	DORENE A. MARROQUIN	SW1/4SW1/4		0.08				FEE
RIGHT OF WAY IN SECTION 13								
422	GORDON LINDSTROM	NW1/4NW1/4		3.54				FEE
423	WAYNE R. MUNSON	NW1/4NW1/4		5.54				FEE
424	STUART L. BERG	NW1/4		7.63				FEE
424A	ORRIE L. WOHLERS	S1/2NW1/4		4.06	2.20		12-1-00	FEE

NOTE: TEMPORARY EASEMENTS IN PUBLIC ROADS WILL EXPIRE ON 12-1-2000

PLAT BOUNDARY DATA		
POINT	DISTANCE	AZIMUTH
B1-B2	354.22'	90°32'50"
B2-B3	352.79'	97°03'27"
B3-B4	60.00'	180°32'50"
B4-B5	60.00'	180°32'50"
B5-B6	351.41'	266°28'03"
B6-B7	277.86'	229°08'22"
B7-B8	886.50'	136°44'32"
B8-B501*	2108.22'	144°40'37"
B501*-B513*	600.00'	270°47'10"
B513*-B9	947.95'	322°37'30"
B9-B10	635.27'	254°54'27"
B10-B11	150.00'	341°25'04"
B11-B12	588.81'	71°25'04"
B12-B13	1011.29'	32°55'21"
B13-B314	642.30'	308°21'33"
B314-NE 14	457.78'	359°55'57"
NE 14-B1	364.00'	74°36'07"

*PLAT 25-35



MINNESOTA DEPARTMENT OF TRANSPORTATION RIGHT OF WAY PLAT NO. 25-43

STATE PROJECT NO. 2514 (61=3-60-2)
IN THE SOUTHWEST QUARTER OF SECTION 12, T. 113 N., R. 16 W.,
IN THE NORTHWEST QUARTER OF SECTION 13, T. 113 N., R. 16 W.,
GOODHUE COUNTY, MINNESOTA

THE COMMISSIONER OF TRANSPORTATION IS HEREBY DESIGNATING THE DEFINITE LOCATION OF TRUNK HIGHWAY NO. 61 FROM 3.0 MILES EAST TO 6.0 MILES EAST OF THE WEST GOODHUE COUNTY LINE.

as shown on this plat prepared by the State of Minnesota Department of Transportation is hereby certified as the official plat of that portion of said T.H. 61 within the designated portion of Sections 12 & 13 and the Commissioner's Order therefor, pursuant to Minnesota Statutes, section 160.085, section 160.14 subd. 1, section 161.16 subd. 2, and section 161.18.

Commissioner's Order No.	Location	Nature of Interest
80879	PLATS 25-43 THRU 25-45	Definite location, width, access, temporary easement and building removal easement.

Certified by

James N. Denn
Commissioner of Transportation
J. Ellen Lohr 4-4-95
by K.F. Rasmussen Date
Director, Office of Right of Way and Surveys

I hereby certify that this plat was prepared by me or under my direct supervision and that I am a duly Registered Land Surveyor under the Laws of the State of Minnesota; that this plat meets requirements of Minnesota Statutes, section 160.085, section 160.14 subd. 1, section 161.16 subd. 2, and section 161.18; that parcel ownerships are correctly described and delineated on the plat; and that the proposed right-of-way boundary lines are correctly designated on the plat.

Certified by *David K. Kehring* 12042 4/4/95
Registered Land Surveyor License No. Date
Office of Right of Way and Surveys

I hereby certify that this plat was surveyed by me or under my direct supervision and that I am a duly Registered Land Surveyor under the Laws of the State of Minnesota; that all measurements are correctly shown on this plat; and that all monuments have been correctly placed as shown on this plat.

Certified by *Eugene A. Markinger* 21357 4-6-95
Registered Land Surveyor License No. Date
MnDOT District Office

SURVEY STANDARDS

- The plat values, azimuths, and distances are based on the project control survey system.
- The boundary monuments shown on this plat have been field checked for location. The standard deviation for the monument position is 0.10 foot.
- The county coordinates shown on one monument are based on ties to national control monuments.
- Certificates of Location have been filed at the County Recorder's Office and/or the County Surveyor's Office for the section corner monuments shown on this plat.
- For details of this survey contact the Surveying and Mapping Section at the Minnesota Department of Transportation, ROCHESTER, Name of District

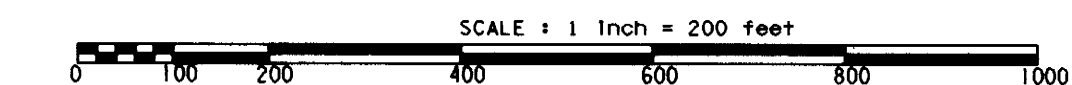
AZIMUTH ORIENTATION AND GRID CONVERSION

Plat azimuths are oriented to the County Coordinate System with 0 degrees 0 minutes 0 seconds being "GRID NORTH". Plat distances are ground lengths.

CONVENTIONAL SYMBOLS

Section Line	—————	Building Removal Easement	— B. R. E. —
Quarter Line	—————	R/W Parcel Number	3
Sixteenth Line	—————	Access Control	—
Property Line	—————	Access Opening	○ OPEN ○
R/W Boundary	— R/W —	Cast Iron Monument or 2"x2" D.O.T. Iron Pipe with Aluminum Cap	⊙
Existing D.O.T. R/W Line	—	3/4" D.O.T. Iron Pin	⊙
And Other Road R/W's	—	Other Iron Monument	⊙
Railroad R/W	—	Concrete or Stone Monument	⊙
Private Easement	— P. E. —	R/W Boundary Corner	⊙
Temporary Easement	— T. E. —		

DISTANCES SHOWN TO FEET (66, 80 ETC.) ARE EXTRINSIC VALUES.



1-1/2" x 4" IRON BAR AT SECTION CORNER
GOODHUE COUNTY COORDINATES
X= 614,963.75
Y= 248,334.84
DATUM= NAD 1983

DOC. NO. 382957

OFFICE OF COUNTY RECORDER
GOODHUE COUNTY, MINN.
I HEREBY CERTIFY THAT THIS PLAT HAS BEEN FILED IN THIS OFFICE AT 2:40 O'CLOCK P.M. ON 4/12/95 IN BOOK 1985 OF PLATS, PAGE 25-43.
Angie J. Peterson
COUNTY RECORDER

PLAT NO. 25-43
S.P. 2514 (61=3-60-2)