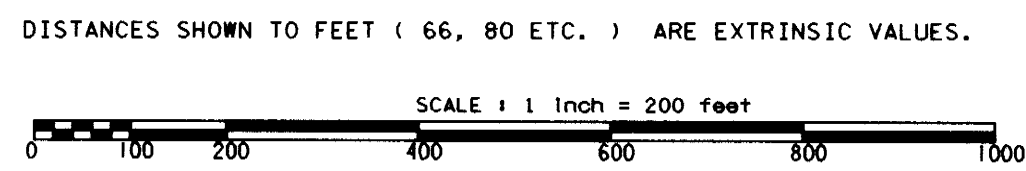
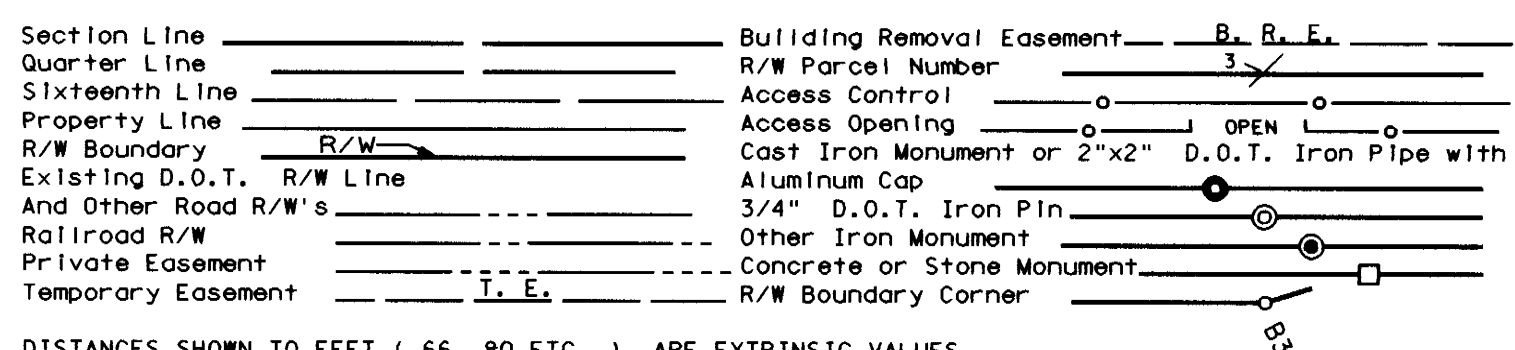


AZIMUTH ORIENTATION AND GRID CONVERSION
 Plat azimuths are oriented to the County Coordinate System with 0 degrees 0 minutes 0 seconds being "GRID NORTH". Plat distances are ground lengths.

CONVENTIONAL SYMBOLS



SURVEY STANDARDS

1. The plat values, azimuths, and distances are based on the project control survey system.
2. The boundary monuments shown on this plat have been field checked for location. The standard deviation for the monument position is 0.10 foot.
3. The county coordinates shown on one monument are based on ties to national control monuments.
4. Certificates of Location have been filed at the County Recorder's Office and/or the County Surveyor's Office for the section corner monuments shown on this plat.
5. For details of this survey contact the Surveying and Mapping Section at the Minnesota Department of Transportation: ROCHESTER Name of District

RIGHT OF WAY IN SECTIONS 11 & 14									
PARCEL	OWNER	LOCATION	TORREN'S CERTIFICATE NO.	NEW T.H. R/W	TEMPORARY EASEMENT	BUILDING REMOVAL EASEMENT	EASEMENT EXPIRES ON	PERMANENT R/W INTEREST	
321	HOEFT FARMS	SW1/4SW1/4 SECTION 11 N1/2NW1/4 SECTION 14		8.49	0.14		12-1-00	FEE	
RIGHT OF WAY IN SECTION 11									
321A	LAWRENCE HAMMES	SE1/4SW1/4		3.76	0.38		12-1-00	FEE	
422B	KEITH W. CARLSON	S1/2SE1/4		3.91				FEE	
422C	DENNIS P. FURLONG	SE1/4SE1/4		0.11	0.09		12-1-00	FEE	
422D	EUGENE HAWKENSEN	SE1/4SE1/4		0.26	0.30		12-1-00	FEE	
422F	STEVEN R. SCHAEZTKE	SW1/4SE1/4		1.25	0.08		12-1-00	FEE	
RIGHT OF WAY IN SECTION 14									
321B	DARYL K. HOFFBECK	NE1/4NE1/4		0.80	0.27		12-1-00	FEE	
422	GORDON LINDSTROM	N1/2NE1/4		5.95	0.09	0.02	12-1-98	FEE	

NOTE: TEMPORARY EASEMENTS IN PUBLIC ROADS WILL EXPIRE ON 12-1-2000

PLAT BOUNDARY DATA		
POINT	DISTANCE	AZIMUTH
B401-B2	722.09'	93°43'00"
B2-B3	500.00'	89°44'47"
B3-B4	1100.28'	88°26'39"
B4-B5	144.36'	57°57'10"
B5-B6	400.00'	0°42'21"
B6-B7	65.00'	90°42'21"
B7-B8	65.00'	90°42'21"
B8-B9	428.90'	180°42'21"
B9-B10	105.17'	135°13'34"
B10-B11	574.05'	89°44'47"
B11-B12	552.74'	84°02'08"
B12-B13	315.19'	95°12'29"
B13-B14	769.15'	99°12'46"
B14-NE 14	298.72'	98°33'43"
NE 14-B314	457.78'	179°55'57"
B314-B15	170.43'	308°21'33"
B15-B16	458.22'	289°57'04"
B16-B17	491.88'	279°44'59"
B17-B18	1580.84'	269°44'47"
B18-B19	283.62'	265°42'09"
B19-B20	2065.26'	265°44'47"
B20-B21	142.16'	225°02'52"
B21-B22	386.57'	180°20'58"
B22-B423	55.00'	270°20'58"
B423-NE15	632.83'	0°20'58"
NE 15-B401	217.18'	359°18'51"

**MINNESOTA DEPARTMENT OF TRANSPORTATION
 RIGHT OF WAY PLAT NO. 25-44**

STATE PROJECT NO. 2514 (61-3-60-2)
 IN THE SOUTH HALF OF SECTION 11, T. 113 N., R. 16 W.,
 IN THE NORTH HALF OF SECTION 14, T. 113 N., R. 16 W.,
 GOODHUE COUNTY, MINNESOTA

THE COMMISSIONER OF TRANSPORTATION IS HEREBY DESIGNATING THE DEFINITE LOCATION OF TRUNK HIGHWAY NO. 61 FROM 3.0 MILES EAST TO 6.0 MILES EAST OF THE WEST GOODHUE COUNTY LINE.

as shown on this plat prepared by the State of Minnesota Department of Transportation is hereby certified as the official plat of that portion of said T.H. 61 within the designated portion of Sections 11 & 14 and the Commissioner's Order therefor, pursuant to Minnesota Statutes, section 160.085, section 160.14 subd. 1, section 161.16 subd. 2, and section 161.18.

Commissioner's Order No. 80879 Location PLATS 25-43 THRU 25-45 Nature of Interest Definite location, width, access, temporary easement and building removal easement.

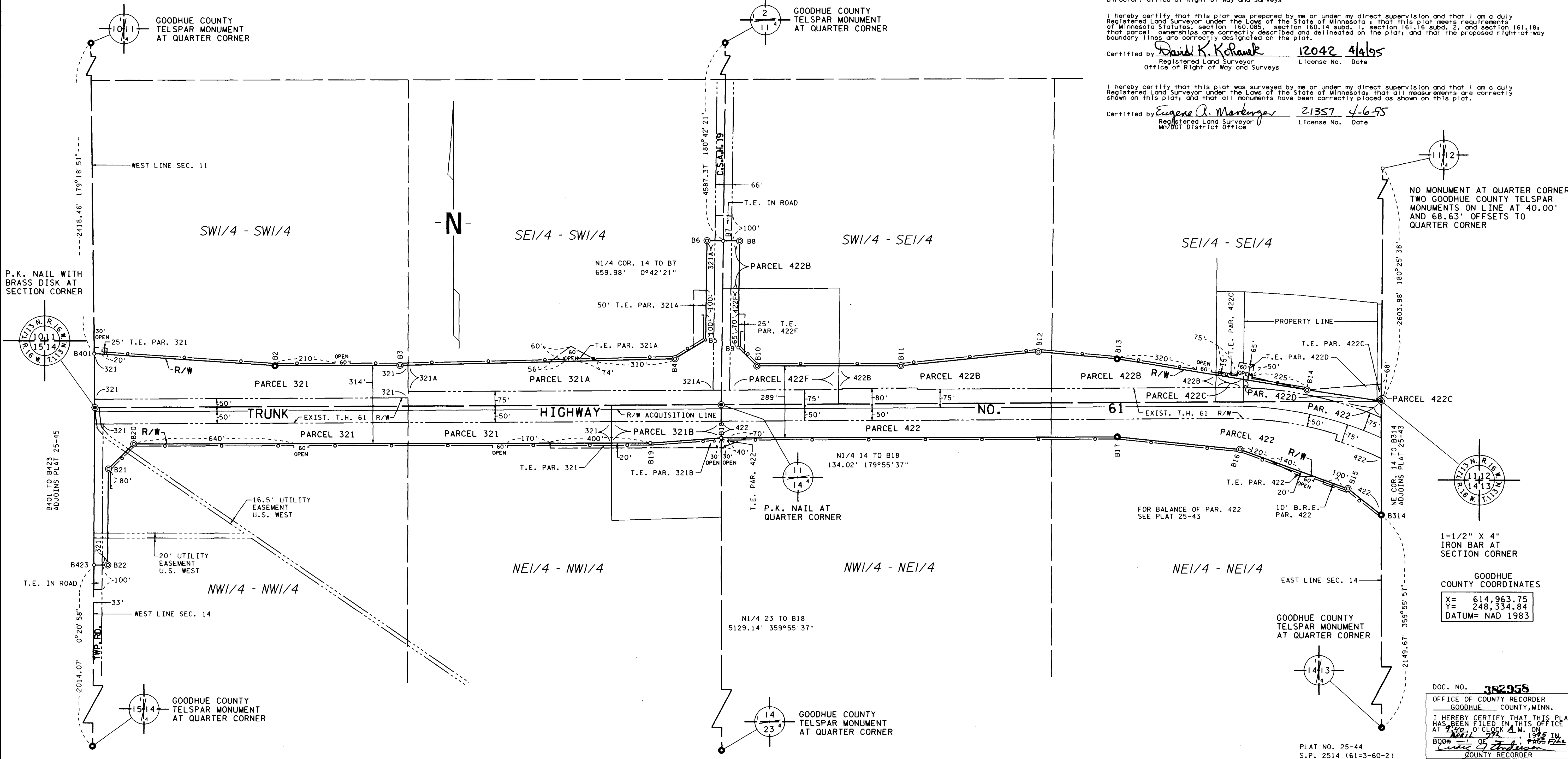
Certified by James N. Denn Commissioner of Transportation
 by K.F. Rasmussen Date 4-4-95
 Director, Office of Right of Way and Surveys

I hereby certify that this plat was prepared by me or under my direct supervision and that I am a duly Registered Land Surveyor under the Laws of the State of Minnesota; that this plat meets requirements of Minnesota Statutes, section 160.085, section 160.14 subd. 1, section 161.16 subd. 2, and section 161.18; that parcel ownerships are correctly described and delineated on the plat, and that the proposed right-of-way boundary lines are correctly designated on the plat.

Certified by David K. Koravik 21042 4/4/95
 Registered Land Surveyor License No. Date
 Office of Right of Way and Surveys

I hereby certify that this plat was surveyed by me or under my direct supervision and that I am a duly Registered Land Surveyor under the Laws of the State of Minnesota; that all measurements are correctly shown on this plat, and that all monuments have been correctly placed as shown on this plat.

Certified by Eugene A. Markinger 21357 4-6-95
 Registered Land Surveyor License No. Date
 M/DOT District Office



NO MONUMENT AT QUARTER CORNER TWO GOODHUE COUNTY TELSPAR MONUMENTS ON LINE AT 40.00' AND 68.63' OFFSETS TO QUARTER CORNER

1-1/2" X 4" IRON BAR AT SECTION CORNER
 GOODHUE COUNTY COORDINATES
 X= 614,963.75
 Y= 248,334.84
 DATUM= NAD 1983

DOC. NO. 382958
 OFFICE OF COUNTY RECORDER
 GOODHUE COUNTY, MINN.
 I HEREBY CERTIFY THAT THIS PLAT HAS BEEN FILED IN THIS OFFICE AT 9:00 O'CLOCK A.M. ON APRIL 14 1995 IN ROOM 207 OF THE COURT HOUSE COUNTY RECORDER