

RIGHT OF WAY IN SECTIONS 10 & 15

PARCEL	OWNER	LOCATION	TORREN'S CERTIFICATE NO.	NEW T.H. R/W		BUILDING REMOVAL EASEMENT	EASEMENT EXPIRES ON	PERMANENT R/W INTEREST
				ACRES	(MORE OR LESS)			
214	BERNARD DALEY	S1/2SW1/4 SECTION 10 N1/2 SECTION 15		12.21	0.40	0.09	12-1-00	FEE
RIGHT OF WAY IN SECTION 15								
214A	KENNETH DALEY	NW1/4NW1/4		0.13				FEE
215	CROSS OF CHRIST LUTHERAN CHURCH	NW1/4NW1/4		0.22	0.34		12-1-00	FEE
216	RAYMOND A. GERGEN	N1/2NE1/4		2.70	0.47		12-1-00	FEE
RIGHT OF WAY IN SECTION 10								
217	RAYMOND J. MEYER JR.	S1/2SE1/4		11.41	0.15		12-1-00	FEE

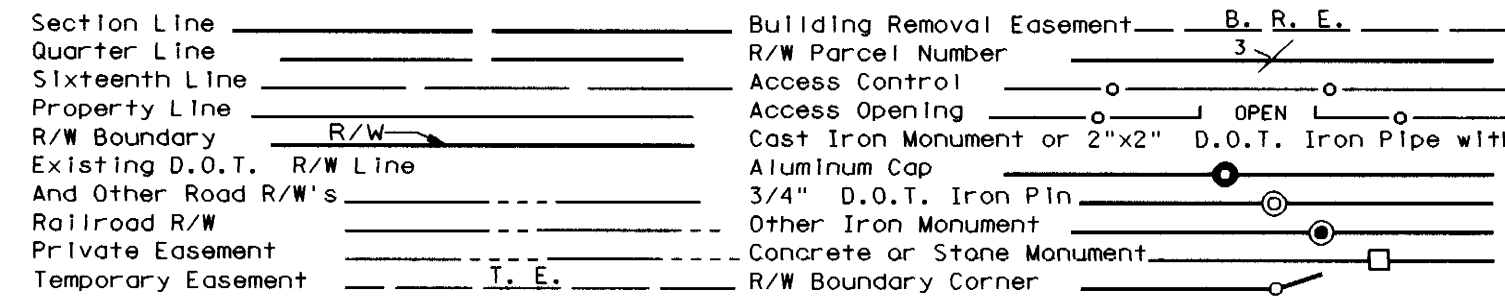
NOTE: TEMPORARY EASEMENTS IN PUBLIC ROADS WILL EXPIRE ON 12-1-2000

SURVEY STANDARDS

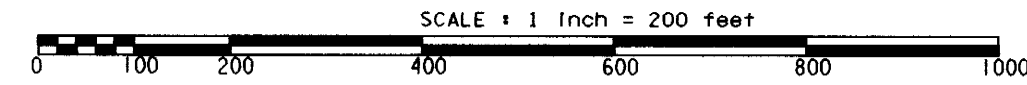
- The plat values, azimuths, and distances are based on the project control survey system.
- The boundary monuments shown on this plat have been field checked for location. The standard deviation for the monument position is 0.10 foot.
- The county coordinates shown on one monument are based on ties to national control monuments.
- Certificates of Location have been filed at the County Recorder's Office and/or the County Surveyor's Office for the section corner monuments shown on this plat.
- For details of this survey contact the Surveying and Mapping Section at the Minnesota Department of Transportation: ROCHESTER Name of District

AZIMUTH ORIENTATION AND GRID CONVERSION
Plat azimuths are oriented to the County Coordinate System with 0 degrees 0 minutes 0 seconds being "GRID NORTH". Plat distances are ground lengths.

CONVENTIONAL SYMBOLS



DISTANCES SHOWN TO FEET (66, 80 ETC.) ARE EXTRINSIC VALUES.



PLAT BOUNDARY DATA		
POINT	DISTANCE	AZIMUTH
B501-B2	2486.07'	89°57'51"
B2-B3	161.85'	33°29'24"
B3-B4	650.00'	359°17'01"
B4-B5	50.00'	89°17'01"
B5-B6	50.00'	89°17'01"
B6-B7	650.40'	179°17'01"
B7-B8	141.99'	134°30'54"
B8-B401	2488.93'	89°44'47"
B401-NE 15	217.18'	179°18'51"
NE 15-B423	632.83'	180°20'58"
B423-B9	75.00'	270°20'58"
B9-B10	385.20'	0°20'58"
B10-B11	140.68'	315°02'52"
B11-B12	2464.57'	269°44'47"
B12-B13	1694.39'	271°39'07"
B13-B14	89.11'	302°31'25"
B14-B15	27.99'	271°26'39"
B15-B16	2°15'31" R 1757.11'	
C 692.87' CAZ 270°18'53" ARC 692.92'		
B16-B17	34.63'	269°11'08"
B17-B18	70.67'	224°09'19"
B18-B19	814.75'	179°07'29"
B19-B520	50.00'	269°07'29"
B520-NE 16	892.30'	359°07'29"
NE 16-B501	200.00'	359°08'34"

MINNESOTA DEPARTMENT OF TRANSPORTATION
RIGHT OF WAY PLAT NO. 25-45

STATE PROJECT NO. 2514 (61-3-60-2)
IN THE SOUTH HALF OF SECTION 10, T. 113 N., R. 16 W.,
IN THE NORTH HALF OF SECTION 15, T. 113 N., R. 16 W.,
GOODHUE COUNTY, MINNESOTA

THE COMMISSIONER OF TRANSPORTATION IS HEREBY DESIGNATING THE DEFINITE LOCATION OF TRUNK HIGHWAY NO. 61 FROM 3.0 MILES EAST TO 6.0 MILES EAST OF THE WEST GOODHUE COUNTY LINE.

as shown on this plat prepared by the State of Minnesota Department of Transportation is hereby certified as the official plat of that portion of said T.H. 61 within the designated portion of Sections 10 & 15 and the Commissioner's Order therefor, pursuant to Minnesota Statutes, section 160.085, section 160.14 subd. 1, section 161.16 subd. 2, and section 161.18.

Commissioner's Order No.	Location	Nature of Interest
80879	PLATS 25-43 THRU 25-45	Definite location, width, access, temporary easement and building removal easement.

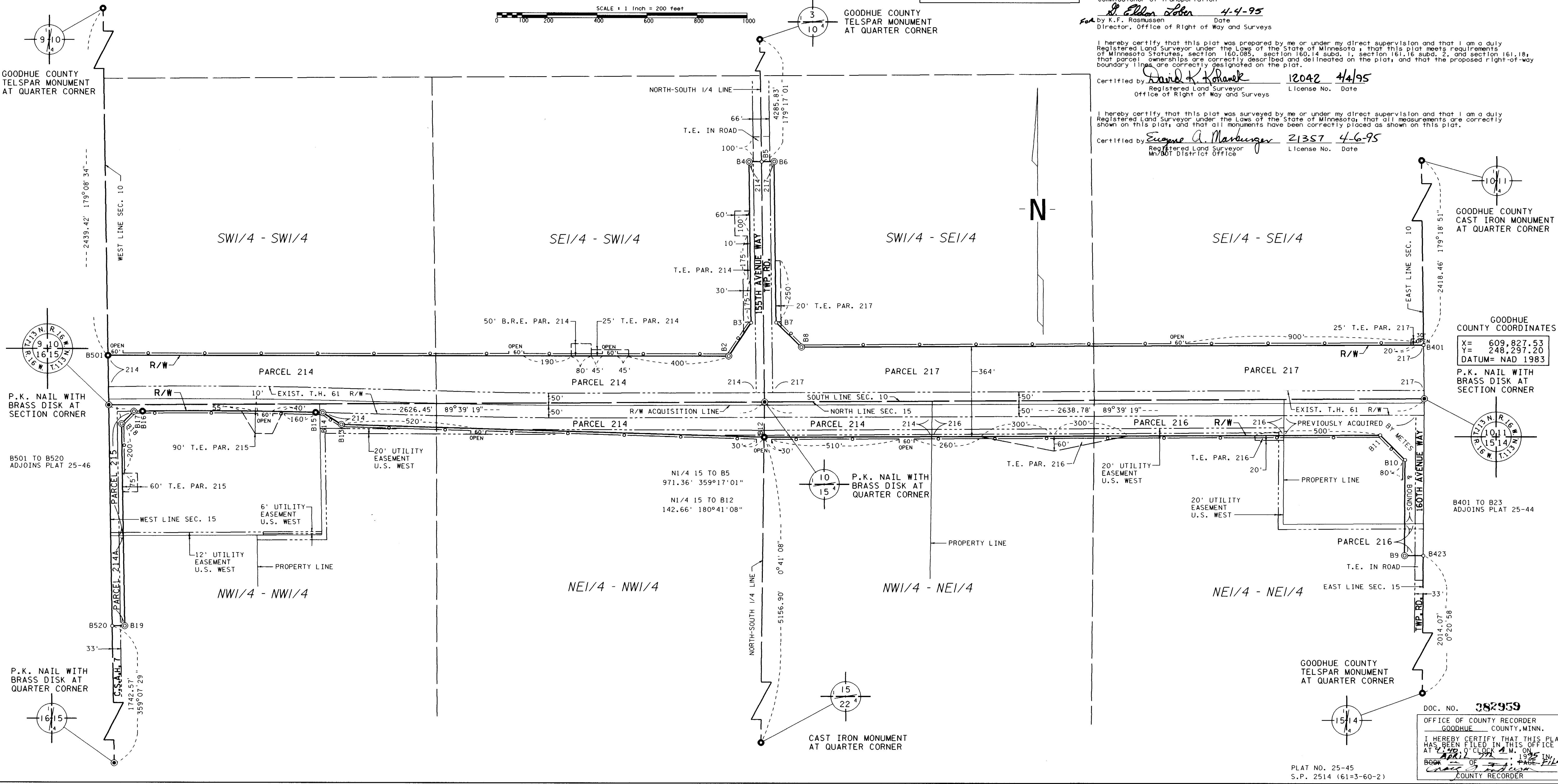
Certified by: James N. Denn, Commissioner of Transportation, J. Ellen Lohr, 4-4-95, K.F. Rasmussen, Director, Office of Right of Way and Surveys

I hereby certify that this plat was prepared by me or under my direct supervision and that I am a duly Registered Land Surveyor under the Laws of the State of Minnesota; that this plat meets requirements of Minnesota Statutes, section 160.085, section 160.14 subd. 1, section 161.16 subd. 2, and section 161.18; that parcel ownerships are correctly described and delineated on the plat, and that the proposed right-of-way boundary lines are correctly designated on the plat.

Certified by: David K. Kohanek, 12042 4/4/95, Registered Land Surveyor, License No. Date

I hereby certify that this plat was surveyed by me or under my direct supervision and that I am a duly Registered Land Surveyor under the Laws of the State of Minnesota; that all measurements are correctly shown on this plat; and that all monuments have been correctly placed as shown on this plat.

Certified by: Eugene A. Marburger, 21357 4-6-95, Registered Land Surveyor, MNDOT District Office, License No. Date



GOODHUE COUNTY COORDINATES
X= 609,827.53
Y= 248,297.20
DATUM= NAD 1983

P.K. NAIL WITH BRASS DISK AT SECTION CORNER

B401 TO B23 ADJOINS PLAT 25-44

DOC. NO. 382959
OFFICE OF COUNTY RECORDER
GOODHUE COUNTY, MINN.
I HEREBY CERTIFY THAT THIS PLAT HAS BEEN FILED IN THIS OFFICE AT 1:29 P.M. ON APR 2 1995 IN BOOK OF PLATS PAGE 214 COUNTY RECORDER