

RIGHT OF WAY IN SECTION 9							
PARCEL	OWNER	LOCATION	TORREN'S CERTIFICATE NO.	NEW T.H. R/W ACRES (MORE OR LESS)	TEMPORARY EASEMENT	BUILDING REMOVAL EASEMENT	PERMANENT R/W INTEREST
209	MICHAEL P. O'ROURKE	SW1/4SW1/4		5.36	0.46		FEE
210	NICHOLAS P. REIS	SE1/4SW1/4		7.80	0.15		FEE
210A	MARGARET ANN CLOVER	SE1/4SW1/4		1.82	0.13		FEE
210B	JACK H. SAVAGE	SW1/4SE1/4		0.65	0.11		FEE
213	PAUL DAVID HANSEN	SE1/4SE1/4		4.28	0.24		FEE

RIGHT OF WAY IN SECTION 16							
PARCEL	OWNER	LOCATION	TORREN'S CERTIFICATE NO.	NEW T.H. R/W ACRES (MORE OR LESS)	TEMPORARY EASEMENT	BUILDING REMOVAL EASEMENT	PERMANENT R/W INTEREST
206	MARY ANN DAHLKE	N1/2NW1/4		2.78	0.12		FEE
207	DONALD J. LAWRENCE	NW1/4NW1/4		1.10	0.19		FEE
211	RAYMOND JACK MEYER	N1/2NE1/4		4.68			FEE

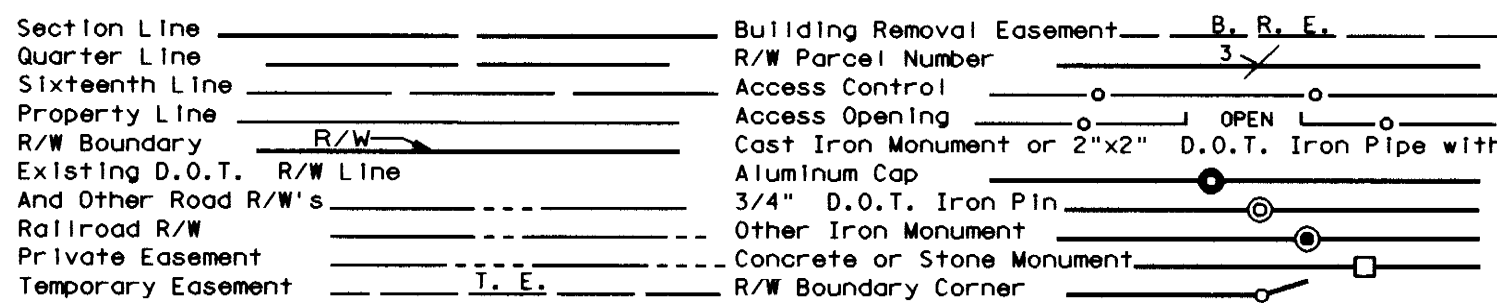
NOTE: TEMPORARY EASEMENTS IN PUBLIC ROADS WILL EXPIRE ON 12-1-2000

AZIMUTH ORIENTATION AND GRID CONVERSION
Plat azimuths are oriented to the County Coordinate System with 0 degrees 0 minutes 0 seconds being "GRID NORTH". Plat distances are ground lengths.

SURVEY STANDARDS

- The plat values, azimuths, and distances are based on the project control survey system.
- The boundary monuments shown on this plat have been field checked for location. The standard deviation for the monument position is 0.10 foot.
- The county coordinates shown on one monument are based on ties to national control monuments.
- Certificates of Location have been filed at the County Recorder's Office and/or the County Surveyor's Office for the section corner monuments shown on this plat.
- For details of this survey contact the Surveying and Mapping Section at the Minnesota Department of Transportation: ROCHESTER
Name of District

CONVENTIONAL SYMBOLS



DISTANCES SHOWN TO FEET (66, 80 ETC.) ARE EXTRINSIC VALUES.



POINT	DISTANCE	AZIMUTH
B601-B2	862.50'	89°11'08"
B2-B3	602.08'	93°56'57"
B3-B4	1169.20'	87°01'30"
B4-B5	931.94'	90°39'57"
B5-B6	192.44'	18°50'12"
B6-B7	174.68'	336°51'46"
B7-B8	101.43'	346°30'39"
B8-B9	66.00'	66°51'46"
B9-B10	108.46'	134°04'50"
B10-B11	174.68'	156°51'46"
B11-B12	253.70'	151°02'45"
B12-B501	1414.83'	90°27'40"
B501-NE 16	200.00'	179°08'34"
NE 16-B520	892.30'	179°07'29"
B520-B13	70.00'	269°07'29"
B13-B14	714.87'	359°07'29"
B14-B15	141.50'	314°09'19"
B15-B16	844.71'	269°11'08"
B16-B17	601.40'	265°16'35"
B17-B18	1033.25'	270°54'17"
B18-B19	2480.85'	269°11'08"
B19-B20	141.64'	224°16'21"
B20-B21	306.15'	179°21'34"
B21-B622	50.00'	269°21'34"
B622-NE 17	537.02'	359°21'34"
NE 17-B601	212.98'	359°22'59"

**MINNESOTA DEPARTMENT OF TRANSPORTATION
RIGHT OF WAY PLAT NO. 25-46**

STATE PROJECT NO. 2514 (61=3-60-2)
IN THE NORTH HALF OF SECTION 16, T. 113 N., R. 16 W.,
IN THE SOUTH HALF OF SECTION 9, T. 113 N., R. 16 W.,
GOODHUE COUNTY, MINNESOTA

THE COMMISSIONER OF TRANSPORTATION IS HEREBY DESIGNATING THE DEFINITE LOCATION OF TRUNK HIGHWAY NO. 61 FROM THE WEST GOODHUE COUNTY LINE TO 3.0 MILES EAST

as shown on this plat prepared by the State of Minnesota Department of Transportation is hereby certified as the official plat of that portion of said T.H. 61 within the designated portion of Sections 9 & 16 and the Commissioner's Order therefor, pursuant to Minnesota Statutes, section 160.085, section 160.14 subd. 1, section 161.16 subd. 2, and section 161.18.

Commissioner's Order No.	Location	Nature of Interest
80880	PLAT 25-46 THRU 25-48	Definite location, width, access, temporary easement and building removal easement.

Certified by: James N. Denn
Commissioner of Transportation
by K.F. Rasmussen Date 4-20-95
Director, Office of Right of Way and Surveys

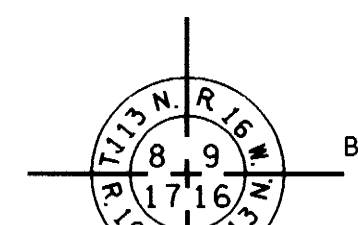
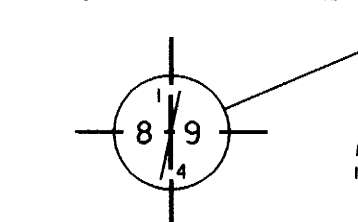
I hereby certify that this plat was prepared by me or under my direct supervision and that I am a duly Registered Land Surveyor under the Laws of the State of Minnesota, that this plat meets requirements of Minnesota Statutes, section 160.085, section 160.14 subd. 1, section 161.16 subd. 2, and section 161.18; that parcel ownerships are correctly described and delineated on the plat; and that the proposed right-of-way boundary lines are correctly designated on the plat.

Certified by: E. Eldon Lohm Date 4-20-95
Registered Land Surveyor License No. _____
Office of Right of Way and Surveys

I hereby certify that this plat was surveyed by me or under my direct supervision and that I am a duly Registered Land Surveyor under the Laws of the State of Minnesota, that all measurements are correctly shown on this plat, and that all monuments have been correctly placed as shown on this plat.

Certified by: Eugene A. Markburger Date 4-21-95
Registered Land Surveyor License No. _____
MnDOT District Office

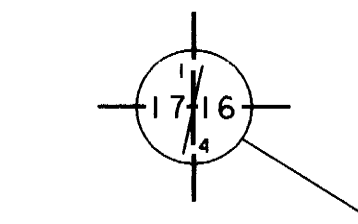
GOODHUE COUNTY
TELSPAR MONUMENT
AT QUARTER CORNER



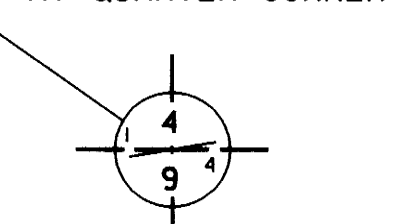
P.K. NAIL WITH
BRASS DISK AT
SECTION CORNER

B601 to B622
ADJOINS PLAT 25-47

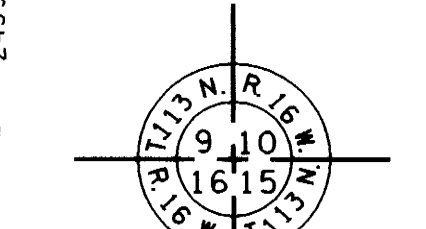
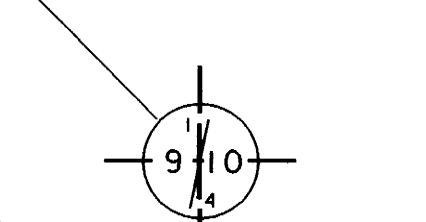
1/2 INCH
REBAR AT
QUARTER CORNER



GOODHUE COUNTY
CAST IRON MONUMENT
AT QUARTER CORNER



GOODHUE COUNTY
TELSPAR MONUMENT
AT QUARTER CORNER

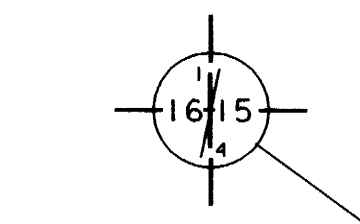


P.K. NAIL WITH
BRASS DISK AT
SECTION CORNER

GOODHUE
COUNTY COORDINATES
X= 604,562.39
Y= 248,285.53
DATUM= NAD 1983

B501 to B520
ADJOINS PLAT 25-45

P.K. NAIL WITH
BRASS DISK AT
QUARTER CORNER



E1/4 16 TO B520
1742.57' 359°07'29"

DOC. NO. **383309**
OFFICE OF COUNTY RECORDER
GOODHUE COUNTY, MINN.
I HEREBY CERTIFY THAT THIS PLAT
HAS BEEN FILED IN THIS OFFICE
AT 1:22 O'CLOCK P.M. ON
APRIL 24, 1995
BY Carol A. Anderson
COUNTY RECORDER