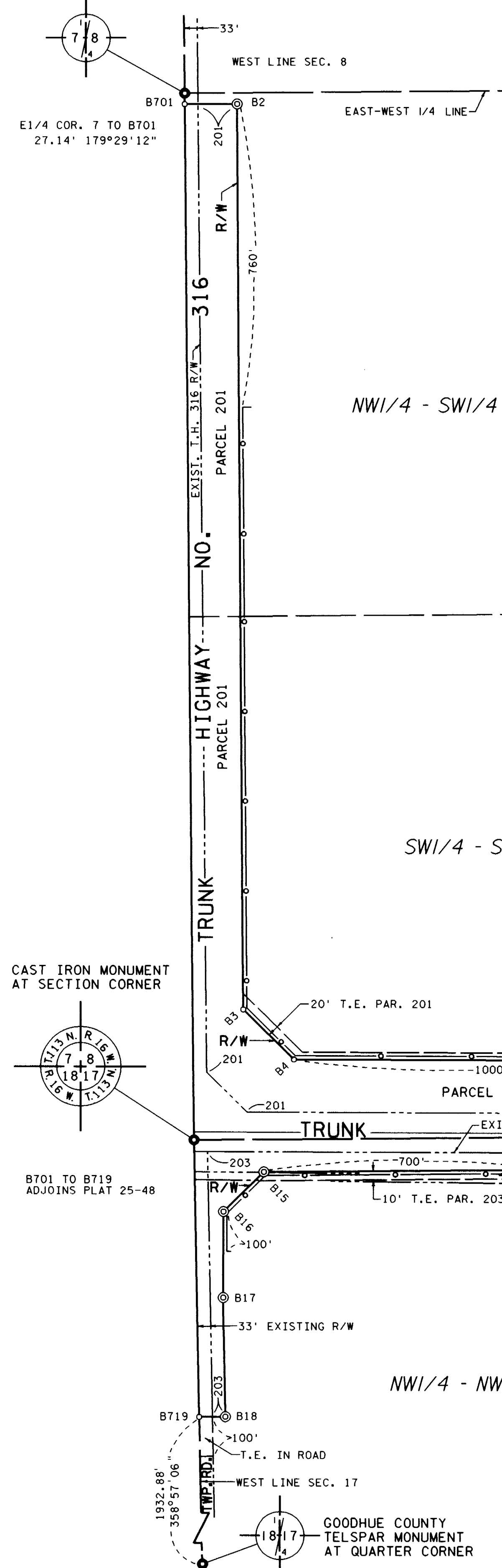


GOODHUE COUNTY
TELSPAR MONUMENT
AT QUARTER CORNER



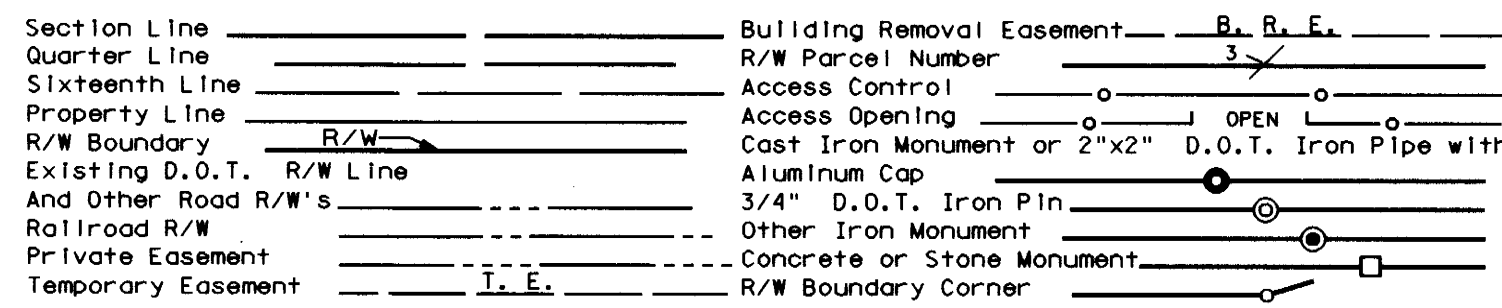
RIGHT OF WAY IN SECTION 8							
PARCEL	OWNER	LOCATION	TORREN'S CERTIFICATE NO.	NEW T.H. R/W ACRES (MORE OR LESS)	TEMPORARY EASEMENT	BUILDING REMOVAL EASEMENT	PERMANENT R/W INTEREST
201	PAUL W. LAWRENCE	SW1/4 & SW1/4SE1/4		17.33	1.84		12-1-00 FEE
202	WILBERT SCHAFFER	SE1/4SE1/4		2.95	0.20	0.26	12-1-00 FEE
209	MICHAEL P. O'ROURKE	SE1/4SE1/4		1.44			FEE
RIGHT OF WAY IN SECTION 17							
203	BRUCE H. BODIN	N1/2NW1/4		2.41	0.24		12-1-00 FEE
204	RONALD G. VITEK	NE1/4NW1/4		0.56	0.17		12-1-00 FEE
205	FLORENCE M. KOEUR	NW1/4NE1/4		1.67	0.14		12-1-00 FEE
206	MARY ANN DAHLKE	NE1/4NE1/4		1.70	0.19		12-1-00 FEE

NOTE: TEMPORARY EASEMENTS IN PUBLIC ROADS WILL EXPIRE ON 12-1-2000

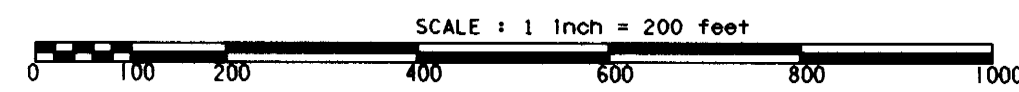
SURVEY STANDARDS

- The plat values, azimuths, and distances are based on the project control survey system.
- The boundary monuments shown on this plat have been field checked for location. The standard deviation for the monument position is 0.10 foot.
- The county coordinates shown on one monument are based on ties to national control monuments.
- Certificates of Location have been filed at the County Recorder's Office and/or the County Surveyor's Office for the section corner monuments shown on this plat.
- For details of this survey contact the Surveying and Mapping Section at the Minnesota Department of Transportation: ROCHESTER Name of District

CONVENTIONAL SYMBOLS



DISTANCES SHOWN TO FEET (66, 80 ETC.) ARE EXTRINSIC VALUES.



AZIMUTH ORIENTATION AND GRID CONVERSION
Plat azimuths are oriented to the County Coordinate System with 0 degrees 0 minutes 0 seconds being "GRID NORTH". Plat distances are ground lengths.

PLAT BOUNDARY DATA		
POINT	DISTANCE	AZIMUTH
B701-B2	130.40'	89°36'20"
B2-B3	2276.21'	179°36'20"
B3-B4	177.64'	134°53'04"
B4-B5	2378.05'	90°09'49"
B5-B6	1514.69'	90°09'49"
B6-B7	585.10'	89°40'28"
B7-B601	546.43'	83°56'07"
B601-NE 17	212.98'	179°22'59"
NE 17-B622	537.02'	179°21'34"
B622-B8	50.00'	269°21'34"
B8-B9	315.85'	359°21'34"
B9-B10	141.21'	314°16'21"
B10-B11	393.03'	269°11'08"
B11-B12	589.95'	269°40'28"
B12-B13	1511.01'	269°47'40"
B13-B14	397.00'	275°02'17"
B14-B15	2060.59'	269°29'46"
B15-B16	141.51'	225°11'55"
B16-B17	215.35'	180°14'01"
B17-B18	299.27'	178°57'06"
B18-B719	65.00'	268°57'06"
B719-NE 18	695.84'	358°57'06"
NE 18-B701	2604.26'	359°29'12"

MINNESOTA DEPARTMENT OF TRANSPORTATION
RIGHT OF WAY PLAT NO. 25-47

STATE PROJECT NO. 2514 (61-3-60-2)
IN THE SOUTH HALF OF SECTION 8, T. 113 N., R. 16 W.,
IN THE NORTH HALF OF SECTION 17, T. 113 N., R. 16 W.,
GOODHUE COUNTY, MINNESOTA

THE COMMISSIONER OF TRANSPORTATION IS HEREBY DESIGNATING THE DEFINITE LOCATION OF TRUNK HIGHWAY NO. 61 FROM THE WEST GOODHUE COUNTY LINE TO 3.0 MILES EAST

as shown on this plat prepared by the State of Minnesota Department of Transportation is hereby certified as the official plat of that portion of said T.H. 61 within the designated portion of Sections 8 & 17 and the Commissioner's Order therefor, pursuant to Minnesota Statutes, section 161.16 subd. 2, and section 161.18, 161.14 subd. 1, section 161.16 subd. 2, and section 161.18.

Commissioner's Order No.	Location	Nature of Interest
80880	PLATS 25-46 THRU 25-48	Definite location, width, access, temporary easement and building removal easement.

Certified:

James N. Denn
Commissioner of Transportation

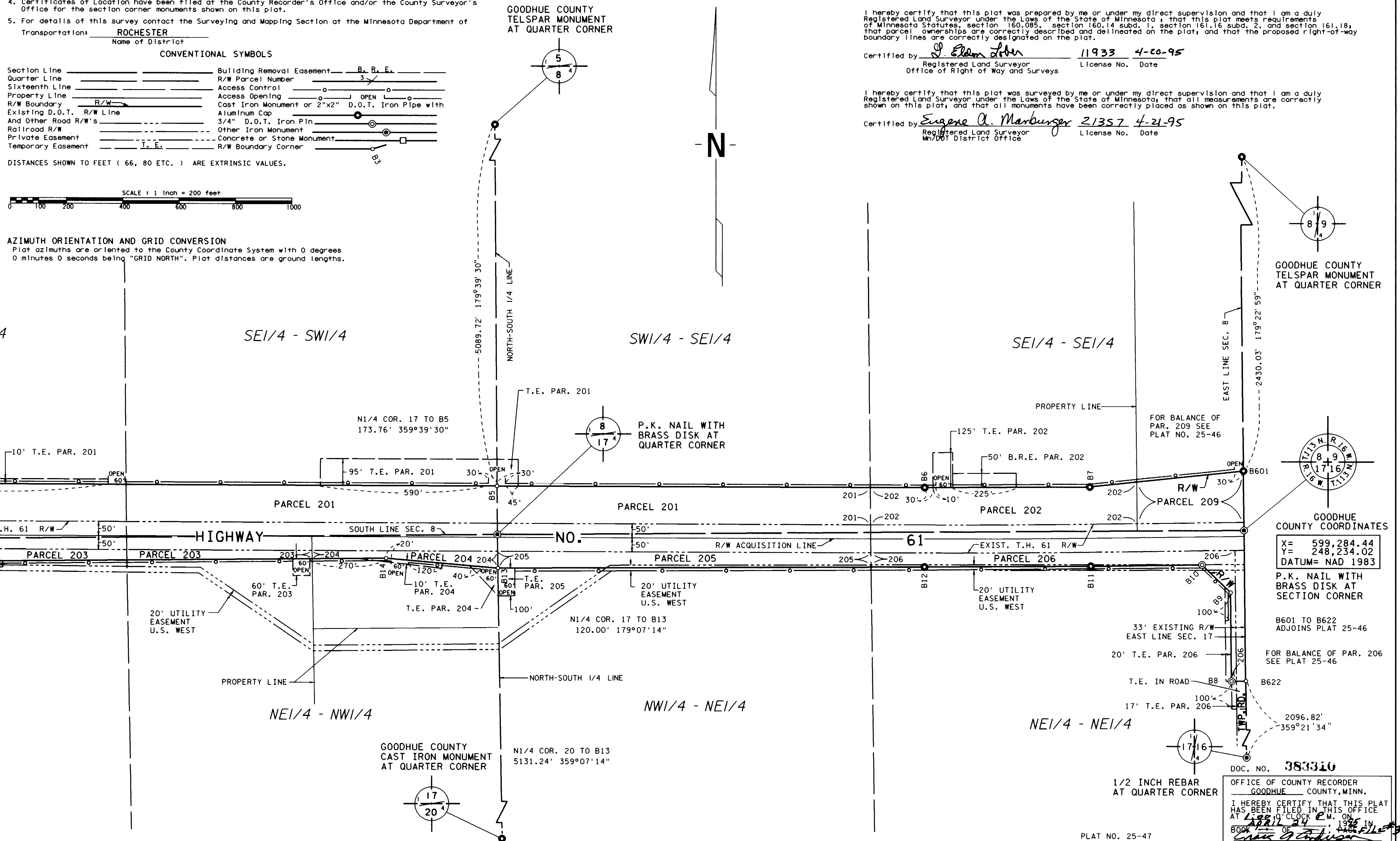
K.F. Rasmussen 4-20-95
by K.F. Rasmussen Date
Director, Office of Right of Way and Surveys

I hereby certify that this plat was prepared by me or under my direct supervision and that I am a duly Registered Land Surveyor under the Laws of the State of Minnesota; that this plat meets requirements of Minnesota Statutes, section 160.085, section 160.14 subd. 1, section 161.16 subd. 2, and section 161.18; that parcel ownerships are correctly described and delineated on the plat; and that the proposed right-of-way boundary lines are correctly designated on the plat.

Certified by *J. Ellen John* 11933 4-20-95
Registered Land Surveyor License No. Date
Office of Right of Way and Surveys

I hereby certify that this plat was surveyed by me or under my direct supervision and that I am a duly Registered Land Surveyor under the Laws of the State of Minnesota; that all measurements are correctly shown on this plat; and that all monuments have been correctly placed as shown on this plat.

Certified by *Eugene A. Marburger* 21357 4-21-95
Registered Land Surveyor License No. Date
M/DOT District Office



DOC. NO. 383310
OFFICE OF COUNTY RECORDER
GOODHUE COUNTY, MINN.
I HEREBY CERTIFY THAT THIS PLAT
HAS BEEN FILED IN THIS OFFICE
AT 1:00 P.M. ON
APRIL 21, 1995 IN
BOOK OF
COUNTY RECORDER