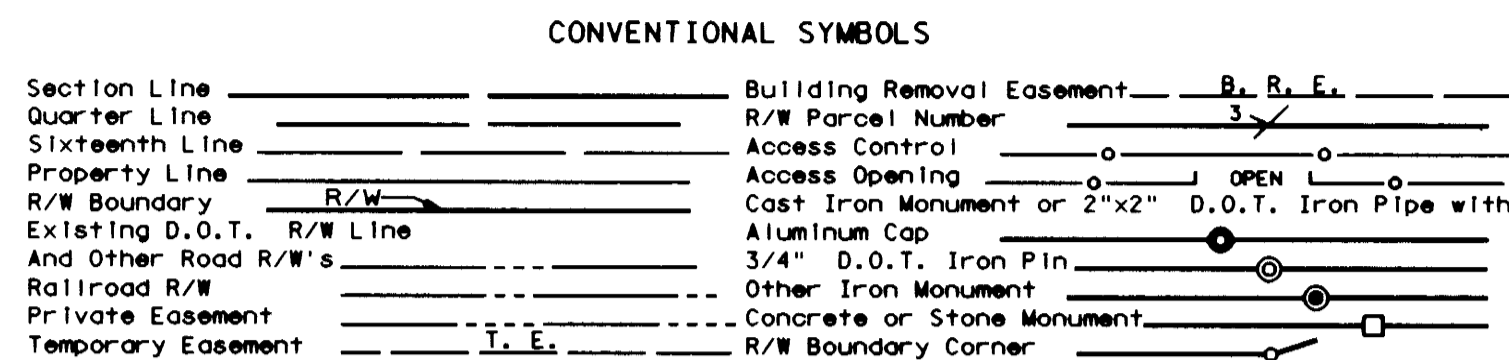


RIGHT OF WAY IN SECTIONS 10 & 15								
PARCEL	OWNER	LOCATION	TORREN'S CERTIFICATE NO.	NEW T.H. R/W ACRES (MORE OR LESS)	TEMPORARY EASEMENT	PERMANENT DRAINAGE EASEMENT	EASEMENT EXPIRES ON	PERMANENT R/W INTEREST
216	RAYMOND A. GERGEN	N1/2 NE1/4		2.70	1.50		12-1-00	FEE EASE.

NOTE: TEMPORARY EASEMENTS IN PUBLIC ROADS WILL EXPIRE ON 12-01-2000.

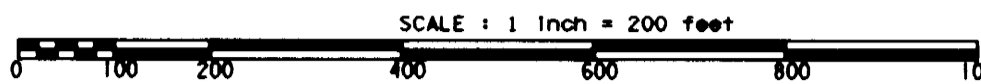


DISTANCES SHOWN TO FEET (66, 80 ETC.) ARE EXTRINSIC VALUES.

AZIMUTH ORIENTATION AND GRID CONVERSION
Plat azimuths are oriented to the County Coordinate System with 0 degrees 0 minutes 0 seconds being "GRID NORTH". Plat distances are ground lengths.

SURVEY STANDARDS

- The plat values, azimuths, and distances are based on the project control survey system.
- The boundary monuments shown on this plat have been field checked for location. The standard deviation for the monument position is 0.10 foot.
- The county coordinates shown on one monument are based on ties to national control monuments.
- Certificates of Location have been filed at the County Recorder's Office and/or the County Surveyor's Office for the section corner monuments shown on this plat.
- For details of this survey contact the Surveying and Mapping Section at the Minnesota Department of Transportation: ROCHESTER
Name of District



PERMANENT DRAINAGE EASEMENT		
POINT	DISTANCE	AZIMUTH
B21-B22	436.61'	203°22'32"
B22-B23	100.00'	269°44'47"
B23-B24	412.31'	13°46'57"
B24-B21	175.00'	89°44'47"

PLAT BOUNDARY DATA		
POINT	DISTANCE	AZIMUTH
B501-B2	2486.07'	89°57'51"
B2-B3	161.85'	33°29'24"
B3-B4	650.00'	359°17'01"
B4-B5	50.00'	89°17'01"
B5-B6	50.00'	89°17'01"
B6-B7	650.40'	179°17'01"
B7-B8	141.99'	134°30'54"
B8-B401	2488.93'	89°44'47"
B401-NE 15	217.18'	179°18'51"
NE 15-B423	632.83'	180°20'58"
B423-B9	75.00'	270°20'58"
B9-B10	385.20'	0°20'58"
B10-B11	140.68'	319°02'52"
B11-B21	779.73'	269°44'47"
B21-B24	175.00'	269°44'47"
B24-B12	1509.84'	269°44'47"
B12-B13	1694.39'	271°39'07"
B13-B14	89.11'	302°31'25"
B14-B15	27.99'	271°26'39"
B15-B16	2°15'31" R 17577.11'	
B16-B17	34.63'	269°11'08"
B17-B18	70.67'	224°09'19"
B18-B19	814.75'	179°07'29"
B19-B520	50.00'	269°07'29"
B520-NE 16	892.30'	359°07'29"
NE 16-B501	200.00'	359°08'34"

MINNESOTA DEPARTMENT OF TRANSPORTATION
RIGHT OF WAY PLAT NO. 25-49*

STATE PROJECT NO. 2514 (61-3-60-2)
IN THE SOUTH HALF OF SECTION 10, T. 113 N., R. 16 W.,
IN THE NORTH HALF OF SECTION 15, T. 113 N., R. 16 W.,
GOODHUE COUNTY, MINNESOTA
*AMENDMENT TO MINNESOTA DEPARTMENT OF TRANSPORTATION
RIGHT OF WAY PLAT NO. 25-45
PARCEL 216

THE COMMISSIONER OF TRANSPORTATION IS HEREBY DESIGNATING THE DEFINITE LOCATION OF TRUNK HIGHWAY NO. 61 FROM 3.0 MILES EAST TO 4.0 MILES EAST OF THE WEST GOODHUE COUNTY LINE.

As shown on this plat prepared by the State of Minnesota Department of Transportation is hereby certified as the official plat of that portion of said T.H. 61 within the designated portion of Sections 10 & 15 and the Commissioner's Order therefor pursuant to Minnesota Statutes, section 160.085, section 160.14 subd. 1, section 161.16 subd. 2, and section 161.18.

Commissioner's Order No.	Location	Nature of Interest
81158	PLAT 25-49	Definite location, width, access, temporary easement and building removal easement.

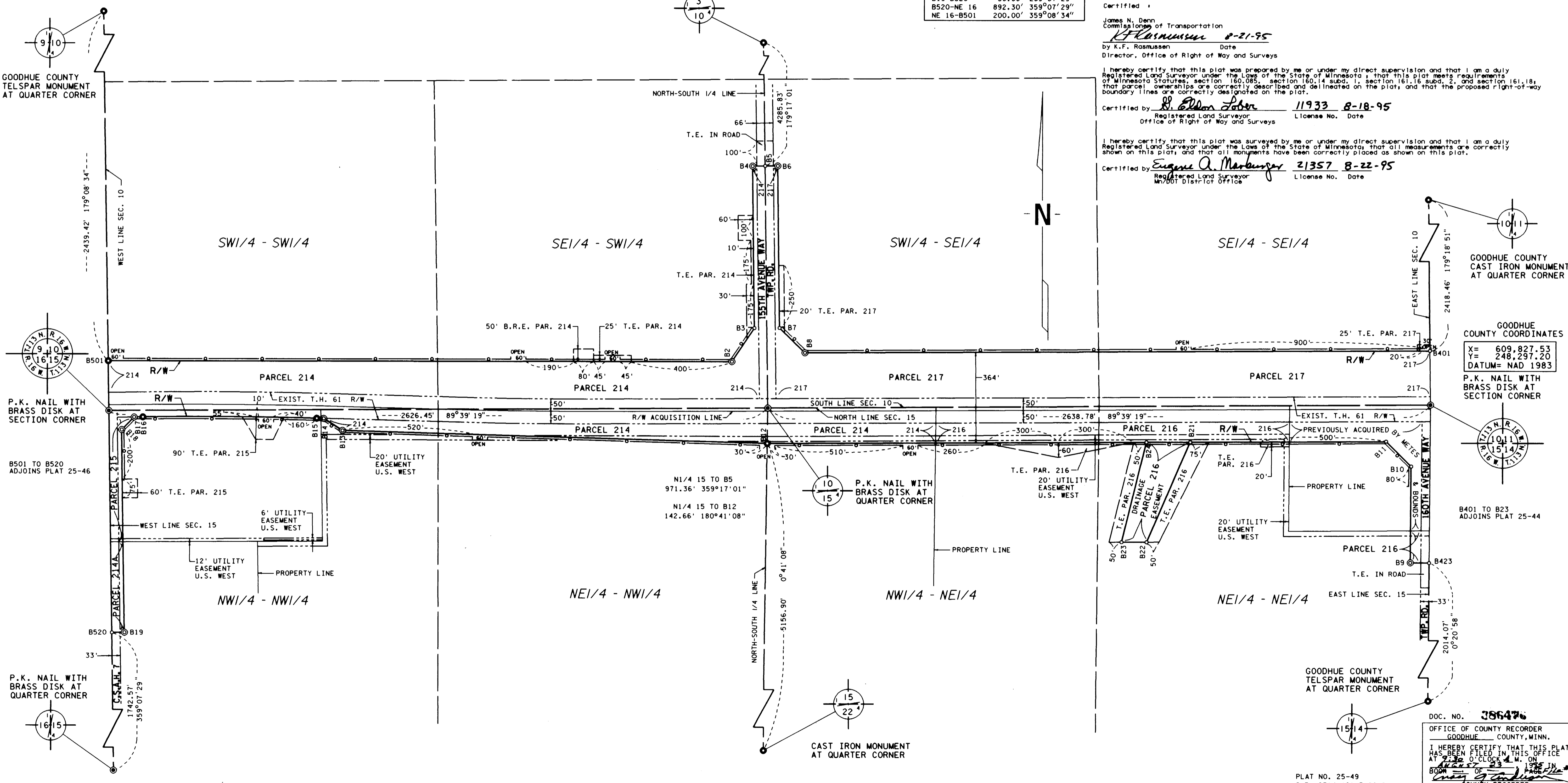
Certified by:
James N. Denn
Commissioner of Transportation
[Signature] 8-21-95
By K.F. Rasmussen Date
Director, Office of Right of Way and Surveys

I hereby certify that this plat was prepared by me or under my direct supervision and that I am a duly Registered Land Surveyor under the Laws of the State of Minnesota; that this plat meets requirements of Minnesota Statutes, section 160.085, section 160.14 subd. 1, section 161.16 subd. 2, and section 161.18; that parcel ownerships are correctly described and delineated on the plat; and that the proposed right-of-way boundary lines are correctly designated on the plat.

Certified by: *[Signature]* 11933 8-18-95
Registered Land Surveyor License No. Date
Office of Right of Way and Surveys

I hereby certify that this plat was surveyed by me or under my direct supervision and that I am a duly Registered Land Surveyor under the Laws of the State of Minnesota; that all measurements are correctly shown on this plat; and that all monuments have been correctly placed as shown on this plat.

Certified by: *[Signature]* 21357 8-22-95
Registered Land Surveyor License No. Date
MNDOT District Office



GOODHUE COUNTY COORDINATES
X = 609,827.53
Y = 248,297.20
DATUM = NAD 1983

DOC. NO. 386476
OFFICE OF COUNTY RECORDER
GOODHUE COUNTY, MINN.
I HEREBY CERTIFY THAT THIS PLAT HAS BEEN FILED IN THIS OFFICE AT 2:30 O'CLOCK P.M. ON AUGUST 23 1995 IN BOOK OF COUNTY RECORDER