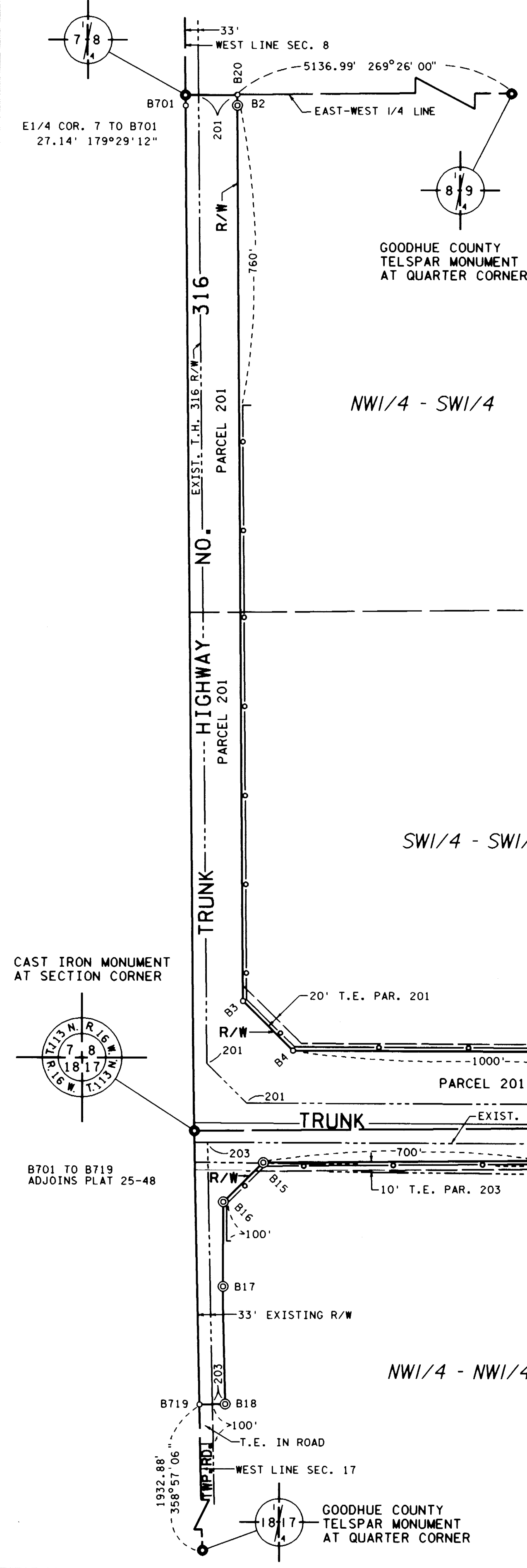


GOODHUE COUNTY
TELSPAR MONUMENT
AT QUARTER CORNER



RIGHT OF WAY IN SECTION 8							
PARCEL	OWNER	LOCATION	TORREN'S CERTIFICATE NO.	NEW T.H. R/W ACRES	TEMPORARY EASEMENT (MORE OR LESS)	BUILDING REMOVAL EASEMENT	PERMANENT R/W INTEREST
201	PAUL W. LAWRENCE	SW1/4 & SW1/4SE1/4		17.38	1.84		FEE

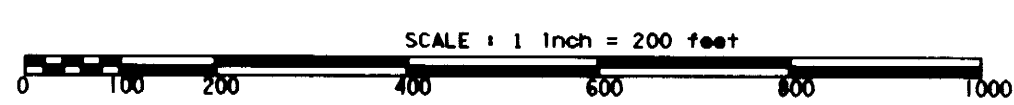
NOTE: TEMPORARY EASEMENTS IN PUBLIC ROADS WILL EXPIRE ON 12-1-2000

SURVEY STANDARDS

- The plat values, azimuths, and distances are based on the project control survey system.
- The boundary monuments shown on this plat have been field checked for location. The standard deviation for the monument position is 0.10 foot.
- The county coordinates shown on one monument are based on ties to national control monuments.
- Certificates of Location have been filed at the County Recorder's Office and/or the County Surveyor's Office for the section corner monuments shown on this plat.
- For details of this survey contact the Surveying and Mapping Section at the Minnesota Department of Transportation: ROCHESTER Name of District

CONVENTIONAL SYMBOLS

Section Line	Building Removal Easement	B. R. E.
Quarter Line	R/W Parcel Number	3
Sixteenth Line	Access Control	0
Property Line	Access Opening	OPEN
R/W Boundary	Cast Iron Monument or 2"x2" D.O.T. Iron Pipe with Aluminum Cap	○
Existing D.O.T. R/W Line	3/4" D.O.T. Iron Pin	⊙
And Other Road R/W's	Other Iron Monument	⊙
Railroad R/W	Concrete or Stone Monument	⊙
Private Easement	R/W Boundary Corner	⊙
Temporary Easement		



AZIMUTH ORIENTATION AND GRID CONVERSION
Plat azimuths are oriented to the County Coordinate System with 0 degrees 0 minutes 0 seconds being "GRID NORTH". Plat distances are ground lengths.

PLAT BOUNDARY DATA

POINT	DISTANCE	AZIMUTH
B701-W1/4 8	27.14'	359°29'12"
W1/4 8-B20	130.46'	89°26'00"
B20-B2	27.53'	179°36'20"
B2-B3	2276.21'	179°36'20"
B3-B4	177.64'	134°53'04"
B4-B5	2378.05'	90°09'49"
B5-B6	1514.69'	90°09'49"
B6-B7	585.10'	89°40'28"
B7-B601	546.43'	83°56'07"
B601-NE 17	212.98'	179°22'59"
NE 17-B622	537.02'	179°21'34"
B622-B8	50.00'	269°21'34"
B8-B9	315.85'	359°21'34"
B9-B10	141.21'	314°16'21"
B10-B11	393.03'	269°11'08"
B11-B12	589.95'	269°40'28"
B12-B13	1511.01'	269°41'40"
B13-B14	397.00'	275°02'17"
B14-B15	2060.59'	269°29'46"
B15-B16	141.51'	225°11'55"
B16-B17	215.35'	180°14'01"
B17-B18	299.27'	178°57'06"
B18-B719	65.00'	268°57'06"
B719-NE 18	695.84'	358°57'06"
NE 18-B701	2604.26'	359°29'12"

MINNESOTA DEPARTMENT OF TRANSPORTATION
RIGHT OF WAY PLAT NO. 25-50*

STATE PROJECT NO. 2514 (61-3-60-2)
IN THE SOUTH HALF OF SECTION 8, T. 113 N., R. 16 W.,
IN THE NORTH HALF OF SECTION 17, T. 113 N., R. 16 W.,
GOODHUE COUNTY, MINNESOTA
*AMENDMENT TO: MINNESOTA DEPARTMENT OF TRANSPORTATION
RIGHT OF WAY PLAT NO. 25-47
PARCEL 201

THE COMMISSIONER OF TRANSPORTATION IS HEREBY DESIGNATING THE DEFINITE LOCATION OF TRUNK HIGHWAY NO. 61 FROM 1.0 TO 2.0 MILES EAST OF THE WEST GOODHUE COUNTY LINE

as shown on this plat prepared by the State of Minnesota Department of Transportation is hereby certified as the official plat of that portion of said T.H. 61 within the designated portion of Sections 8 & 17 and the Commissioner's Order therefor, pursuant to Minnesota Statutes, section 161.16 subd. 2, and section 161.18, 160.14 subd. 1, section 161.16 subd. 2, and section 161.18.

Commissioner's Order No.	Location	Nature of Interest
81182	PLAT 25-50	Definite location, width, access, temporary easement and building removal easement.

Certified by:
James N. Denn
Commissioner of Transportation
J. Rasmussen 8-21-95
by K.F. Rasmussen Date
Director, Office of Right of Way and Surveys

I hereby certify that this plat was prepared by me or under my direct supervision and that I am a duly Registered Land Surveyor under the Laws of the State of Minnesota; that this plat meets requirements of Minnesota Statutes, section 160.085, section 160.14 subd. 1, section 161.16 subd. 2, and section 161.18; that parcel ownerships are correctly described and delineated on the plat; and that the proposed right-of-way boundary lines are correctly designated on the plat.

Certified by: *David K. Kohanek 12042 8-21-95*
Registered Land Surveyor License No. Date
Office of Right of Way and Surveys

I hereby certify that this plat was surveyed by me or under my direct supervision and that I am a duly Registered Land Surveyor under the Laws of the State of Minnesota; that all measurements are correctly shown on this plat; and that all monuments have been correctly placed as shown on this plat.

Certified by: *Eugene A. Marburger 21357 8-22-95*
Registered Land Surveyor License No. Date
M7601 District Office

GOODHUE COUNTY
TELSPAR MONUMENT
AT QUARTER CORNER

GOODHUE COUNTY
TELSPAR MONUMENT
AT QUARTER CORNER

GOODHUE COUNTY COORDINATES
X= 599,284.44
Y= 248,234.02
DATUM= NAD 1983

P.K. NAIL WITH BRASS DISK AT SECTION CORNER

B601 TO B622 ADJOINS PLAT 25-46

FOR BALANCE OF PAR. 206 SEE PLAT 25-46

DOC. NO. 386477
OFFICE OF COUNTY RECORDER
GOODHUE COUNTY, MINN.
I HEREBY CERTIFY THAT THIS PLAT HAS BEEN FILED IN THIS OFFICE AT 1:30 P.M. ON 8/22/95
COUNTY RECORDER