

RIGHT OF WAY IN SECTION 17						
PARCEL	OWNER	LOCATION	TORRENS CERTIFICATE NO.	NEW T.H. R/W	TEMPORARY EASEMENT	PERMANENT R/W INTEREST
				ACRES (MORE OR LESS)	ACRES (MORE OR LESS)	
246	DOUGLAS M. DANKERS	S1/2NW1/4 NW1/4SW1/4		14.83	0.28	12-01-05 FEE
246A	FREDRICK W. FANSLAW	NW1/4SW1/4		0.02		FEE

PLAT BOUNDARY DATA			
FROM	TO	DISTANCE (FT)	AZIMUTH
B5101	B2	71.13	56°54'18"
B2	B3	792.27	56°54'18"
B3	B4	52.20	40°12'21"
B4	B5	52.20	73°36'15"
B5	B6	803.47	56°54'18"
B6	B7	262.63	58°14'53"
B7	B8	C 332.68	47°02'53"
A	332.93 R	2496.67 DEL	7°38'25" LT
B8	B5109	38.07	33°34'56"
B5109	B5110	309.83	89°59'06"
B5110	B11	147.04	214°44'35"
B11	B12	417.64	224°33'35"
B12	B13	1654.50	236°54'18"
B13	B5114	616.66	236°54'18"
B5114	B5101	297.08	0°18'43"

MINNESOTA DEPARTMENT OF TRANSPORTATION  
RIGHT OF WAY PLAT NO. 25-51

CONTROL SECTION NO. 2510(58-58-21-2)  
IN THE WEST HALF OF SECTION 17, TOWNSHIP 112 N., RANGE 14 W.,  
GOODHUE COUNTY, MINNESOTA

THE COMMISSIONER OF TRANSPORTATION IS HEREBY DESIGNATING THE DEFINITE LOCATION OF TRUNK HIGHWAY NO. 58 FROM 0.8 MILES SOUTH OF COUNTY STATE AID HIGHWAY NO. 5 TO 0.1 MILES NORTH OF 20TH STREET IN RED WING

as shown on this plat prepared by the State of Minnesota Department of Transportation is hereby certified as the official plat of that portion of said T.H. 58 within the designated portion of Section 17 and the Commissioner's Order therefor, pursuant to Minnesota Statutes, section 160.082, section 160.14 subd. 1, section 161.16 subd. 2, and section 161.18.

It is further ordered that it is necessary to acquire all trees, shrubs, grass and herbage within the right of way of said Trunk Highway, and to keep and have exclusive control of the same.

Commissioner's Order No.	Location	Nature of Interest
85318	PLAT 25-51	Definite location, width, access, temporary easement and building removal easement.

Certified by:  
Elwyn Tinklenberg  
Commissioner of Transportation  
Date: 4-18-01  
K.F. Rasmussen  
Director, Office of Land Management

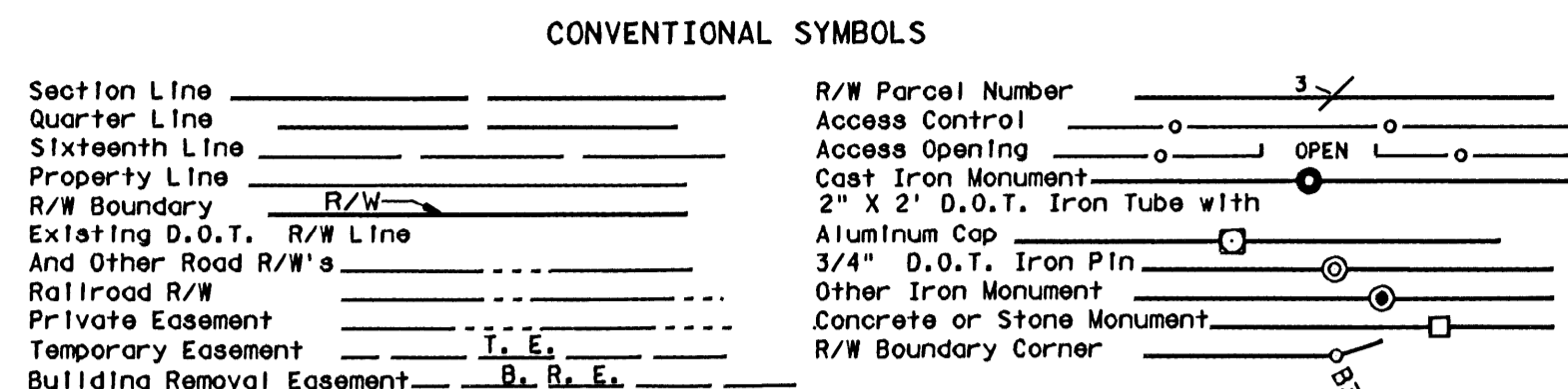
I hereby certify that this plat was prepared by me or under my direct supervision and that I am a duly Licensed Land Surveyor under the Laws of the State of Minnesota; that this plat meets requirements of Minnesota Statutes, section 160.082, section 160.14 subd. 1, section 161.16 subd. 2, and section 161.18; that parcel ownerships are correctly described and delineated on the plat; and that the proposed right-of-way boundary lines are correctly designated on the plat.

Certified by: David K. Kobanek  
Licensed Land Surveyor  
Office of Land Management  
License No. 12042 Date 4-18-2001

I hereby certify that this plat was surveyed by me or under my direct supervision and that I am a duly Licensed Land Surveyor under the Laws of the State of Minnesota; that all measurements are correctly shown on this plat; that all monuments have been correctly placed as shown on this plat; and that Certificates of Location for the monumented public land survey corners as shown on this plat are on file in the County Recorder's Office.

Certified by: Keith M. Pullin  
Licensed Land Surveyor  
Mn/DOT District Office  
License No. 23946 Date 4-26-2001

**AZIMUTH ORIENTATION**  
Plat azimuths are oriented to the County Coordinate System with 0 degrees 0 minutes 0 seconds being "GRID NORTH" and all distances are ground lengths.

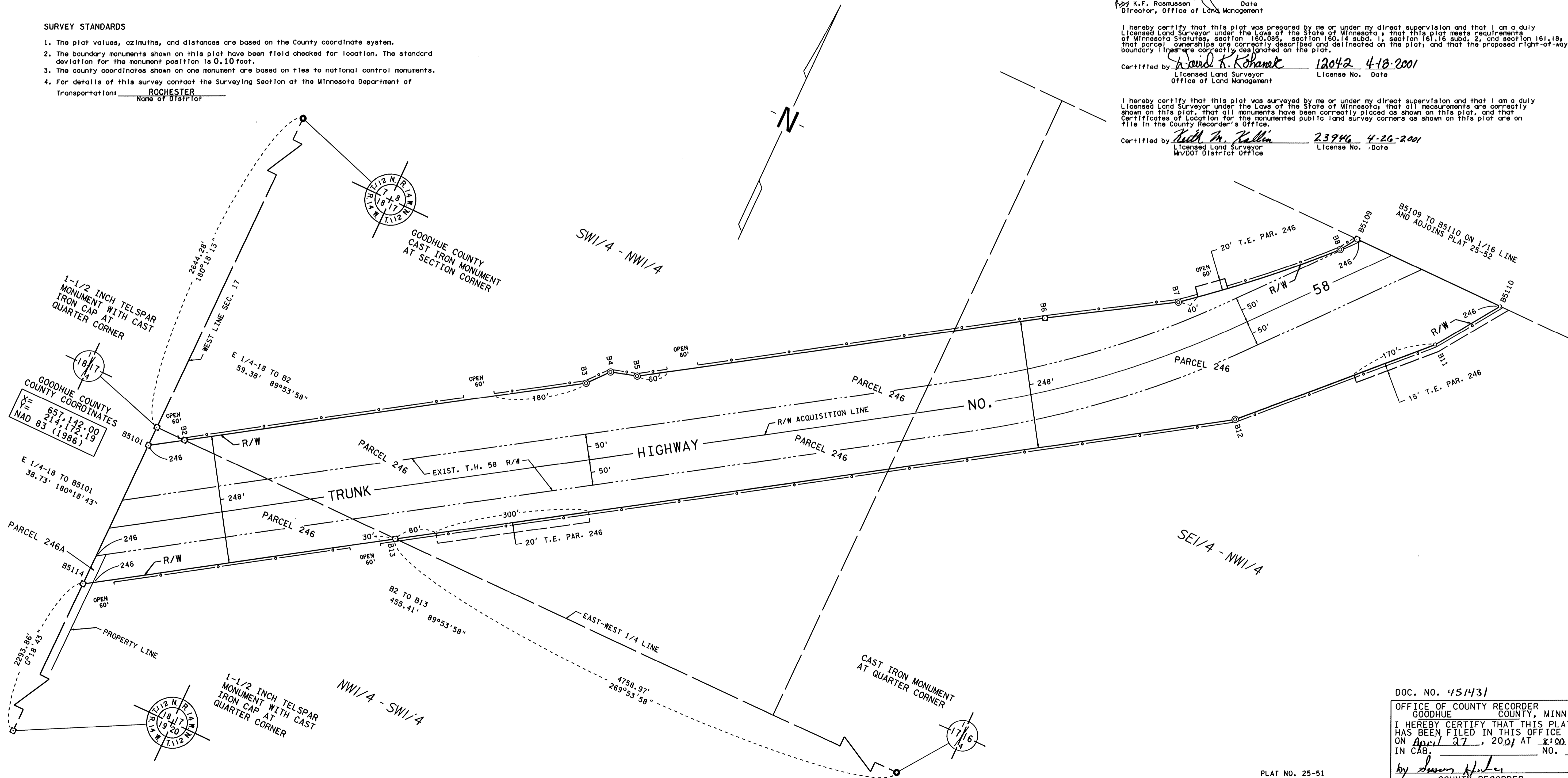


DISTANCES SHOWN TO FEET ( 66, 80 ETC. ) ARE EXACT VALUES.

**SURVEY STANDARDS**

1. The plat values, azimuths, and distances are based on the County coordinate system.
2. The boundary monuments shown on this plat have been field checked for location. The standard deviation for the monument position is 0.10 foot.
3. The county coordinates shown on one monument are based on ties to national control monuments.
4. For details of this survey contact the Surveying Section at the Minnesota Department of Transportation.

ROCHESTER  
Name of District



DOC. NO. 451431  
OFFICE OF COUNTY RECORDER  
GOODHUE COUNTY, MINN  
I HEREBY CERTIFY THAT THIS PLAT  
HAS BEEN FILED IN THIS OFFICE  
ON April 27, 2001 AT 8:00 AM  
IN CAB. NO.  
by Susan Fisher  
COUNTY RECORDER

PLAT NO. 25-51  
C.S. 2510(58-58-21-2)