

THE COMMISSIONER OF TRANSPORTATION IS HEREBY DESIGNATING THE DEFINITE LOCATION OF TRUNK HIGHWAY NO. 316 FROM 230TH STREET EAST IN WELCH TOWNSHIP TO 0.5 MILE SOUTH

as shown on this plat prepared by the State of Minnesota Department of Transportation is hereby certified as the official plat of that portion of solid T.H. 316 within the designated portion of Sections 7 & 8 and the Commissioner's Order therefor, pursuant to Minnesota Statutes, section 160.085, section 160.14 subd. 1, section 161.16 subd. 2, and section 161.19.

It is further ordered that it is necessary to acquire all trees, shrubs, grass and herbage within the right of way of said Trunk Highway, and to keep and have the exclusive control of the same.

Commissioner's Order No. 86089 Location PLAT 25-59 Nature of Interest Definite location, width, access, temporary easement and building removal easement.

Certified by Douglas J. Weiszhorst, Director, Office of Land Management, dated 11/12/2002.

I hereby certify that this plat was prepared by me or under my direct supervision and that I am a duly Licensed Land Surveyor under the Laws of the State of Minnesota, that all measurements are correctly shown on this plat, that all monuments have been correctly placed as shown on this plat, and that the plat is a true and correct copy of the original as described and delineated on the plat, and that the proposed right-of-way boundary lines are correctly designated on the plat.

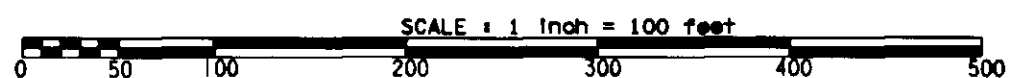
Certified by Keith Cochran, Licensed Land Surveyor, License No. 25157, Date 11/12/02.

I hereby certify that this plat was surveyed by me or under my direct supervision and that I am a duly Licensed Land Surveyor under the Laws of the State of Minnesota, that all measurements are correctly shown on this plat, that all monuments have been correctly placed as shown on this plat, and that the plat is a true and correct copy of the original as described and delineated on the plat, and that the proposed right-of-way boundary lines are correctly designated on the plat.

Certified by Keith Cochran, Licensed Land Surveyor, License No. 25030, Date 11/12/02.

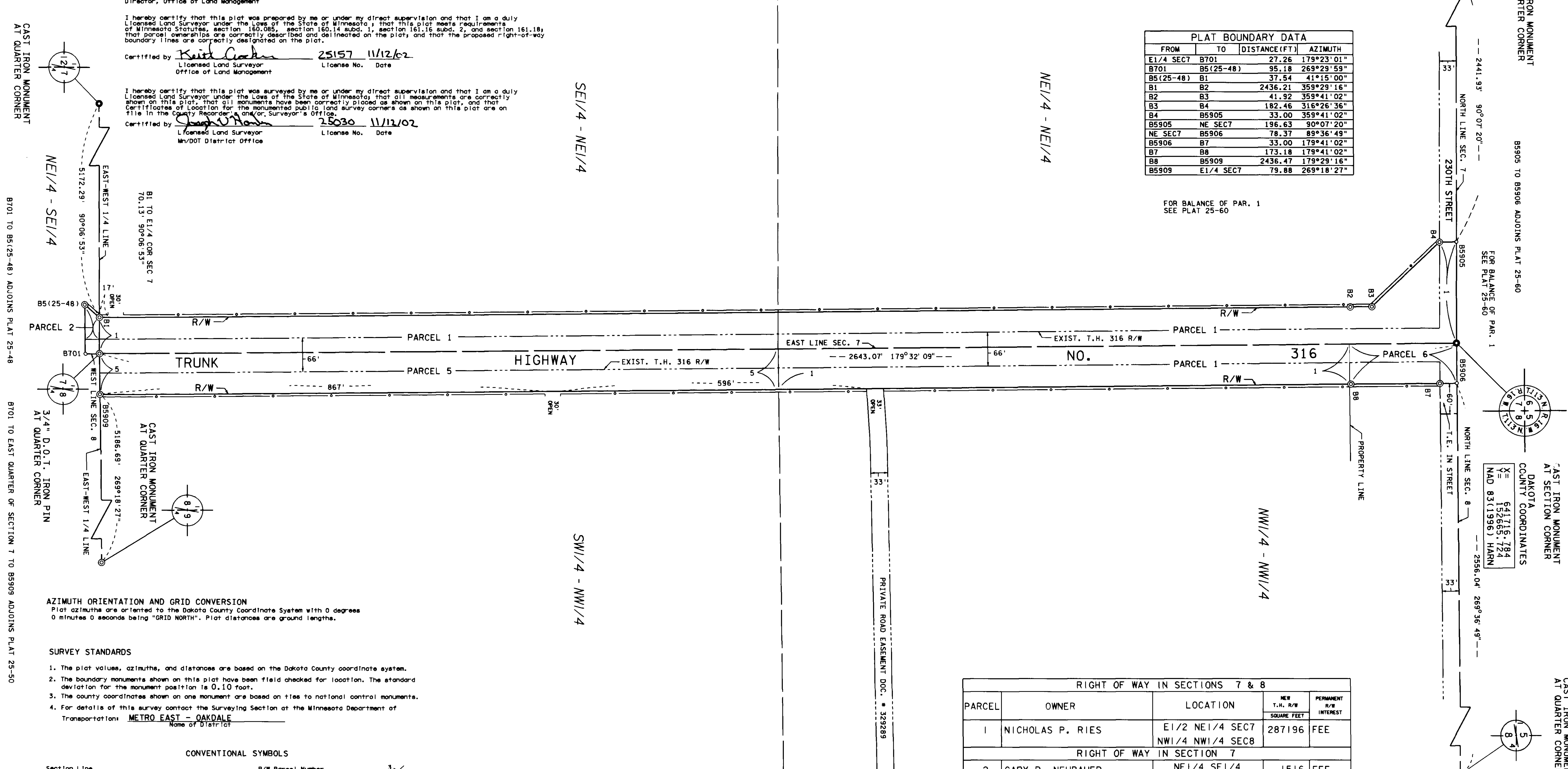
MINNESOTA DEPARTMENT OF TRANSPORTATION
RIGHT OF WAY PLAT NO. 25-59

CONTROL SECTION NO. 2518(316-316)902
IN THE EAST HALF OF SECTION 7, T. 113 N., R. 16 W.,
IN THE NORTHWEST QUARTER OF SECTION 8, T. 113 N., R. 16 W.,
GOODHUE COUNTY, MINNESOTA



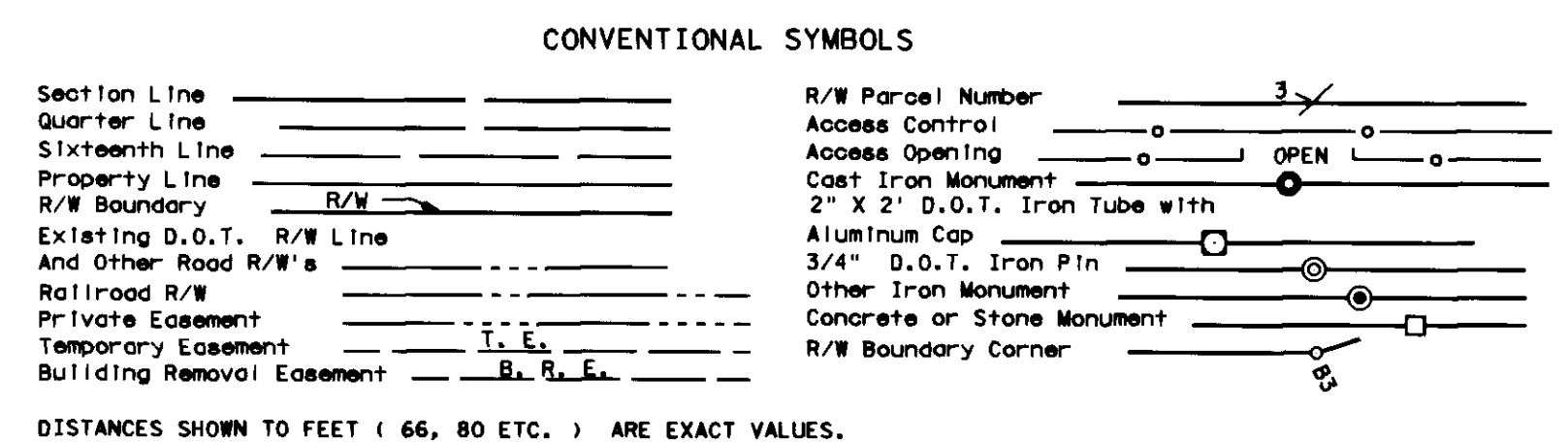
FROM	TO	DISTANCE (FT)	AZIMUTH
E1/4 SEC 7	B701	27.26	179°23'01"
B701	B5(25-48)	95.18	269°29'59"
B5(25-48)	B1	37.54	41°15'00"
B1	B2	2436.21	359°29'16"
B2	B3	41.52	359°41'02"
B3	B4	182.46	316°26'36"
B4	B5905	33.00	359°41'02"
B5905	NE SEC 7	196.63	90°07'20"
NE SEC 7	B5906	78.37	89°36'49"
B5906	B7	33.00	179°41'02"
B7	B8	173.18	179°41'02"
B8	B5909	2436.47	179°29'16"
B5909	E1/4 SEC 8	79.88	269°18'27"

FOR BALANCE OF PAR. 1
SEE PLAT 25-60



AZIMUTH ORIENTATION AND GRID CONVERSION
Plat azimuths are oriented to the Dakota County Coordinate System with 0 degrees 0 minutes 0 seconds being "GRID NORTH". Plat distances are ground lengths.

- SURVEY STANDARDS**
- The plat values, azimuths, and distances are based on the Dakota County coordinate system.
 - The boundary monuments shown on this plat have been field checked for location. The standard deviation for the monument position is 0.10 foot.
 - The county coordinates shown on one monument are based on files to national control monuments.
 - For details of this survey contact the Surveying Section of the Minnesota Department of Transportation: METRO EAST - OAKDALE



DISTANCES SHOWN TO FEET (66, 80 ETC.) ARE EXACT VALUES.

PARCEL	OWNER	LOCATION	NET T.H. R/W SQUARE FEET	PERMITS R/W INTEREST
1	NICHOLAS P. RIES	E1/2 NE1/4 SEC 7 NW1/4 NW1/4 SEC 8	287196	FEE
RIGHT OF WAY IN SECTION 7				
2	GARY P. NEUBAUER	NE1/4 SE1/4	1516	FEE
RIGHT OF WAY IN SECTION 8				
5	GERALD A. EISERT	SW1/4 NW1/4	106080	FEE
6	BRUCE A. BAUER	NW1/4 NW1/4	16400	FEE

NOTE: TEMPORARY EASEMENTS IN PUBLIC ROADS WILL EXPIRE ON 12-01-07

DOC. NO. 475787
OFFICE OF COUNTY RECORDER
GOODHUE COUNTY, MINNESOTA
I HEREBY CERTIFY THAT THIS PLAT
HAS BEEN FILED IN THIS OFFICE
ON Nov 14, 2002 AT 3:30 PM
IN CAB. 25-59 NO. 475787
Jean M. Decker by [Signature]
COUNTY RECORDER