

THE COMMISSIONER OF TRANSPORTATION IS HEREBY DESIGNATING THE DEFINITE LOCATION OF TRUNK HIGHWAY NO. 52 FROM COUNTY STATE AID HIGHWAY NO. 24 TO 2.0 MILES SOUTH

as shown on this plat prepared by the State of Minnesota Department of Transportation is hereby certified as the official plat of that portion of said T.H. 52 within the designated portion of Section 30 and the Commissioner's Order therefor pursuant to Minnesota Statutes, section 160.085, section 160.14 subd. 1, section 161.16 subd. 2, and section 161.18.

It is further ordered that it is necessary to acquire all trees, shrubs, grass and herbage within the right of way of said Trunk Highway, and to keep and have the exclusive control of the same.

Commissioner's Order No. 93402 Location PLAT 25-74 Nature of Interest Definite location, width, access and temporary easement.

Certified by Bernard J. Arseneau, PE, PTOE Acting Commissioner of Transportation by Bryan J. Dodds Director, Office of Land Management 12/17/12

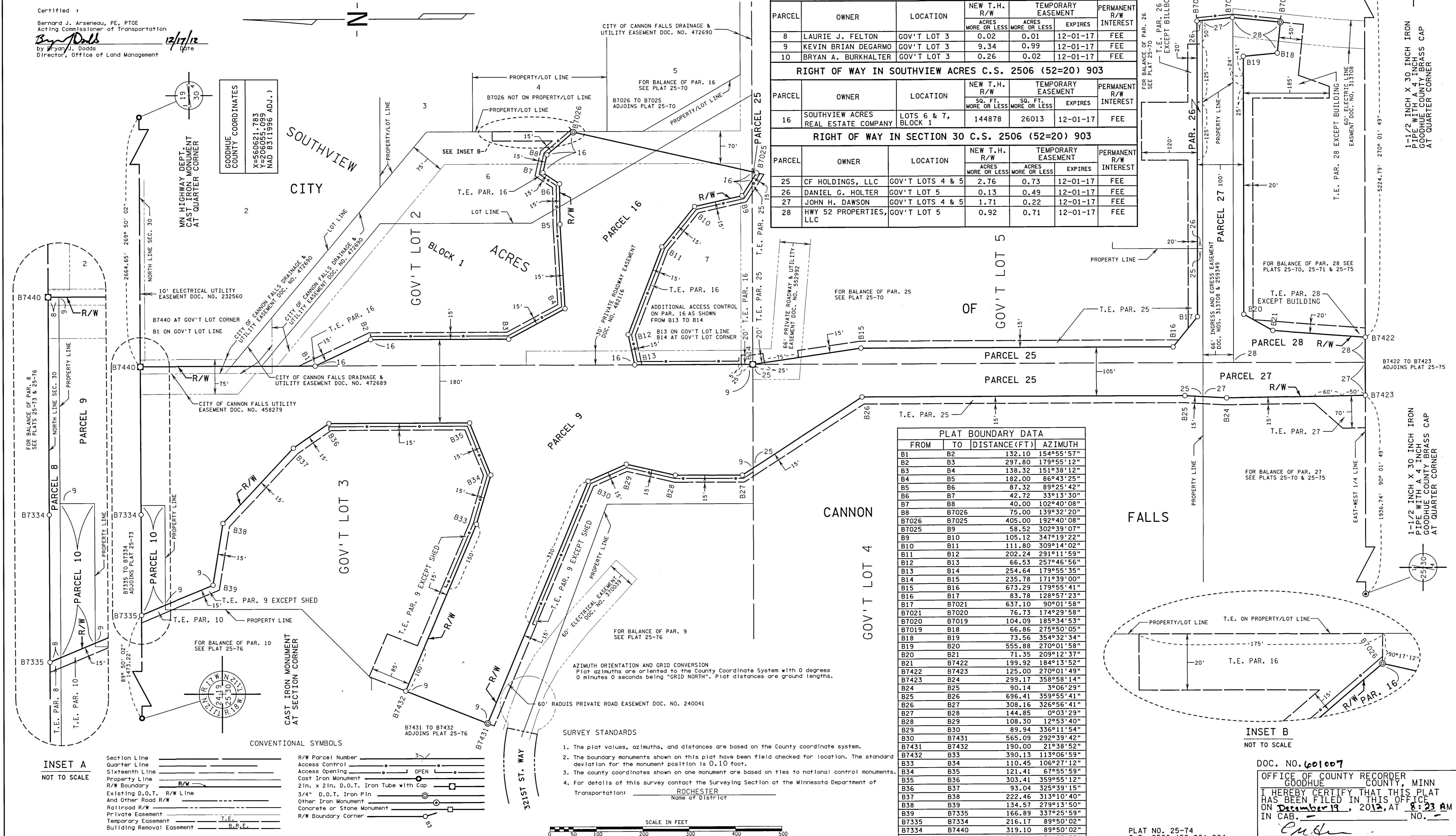
I hereby certify that this plat was surveyed and prepared by me or under my direct supervision and that I am a duly Licensed Land Surveyor under the Laws of the State of Minnesota; that all measurements are correctly shown on this plat; that all monuments have been correctly placed as shown on this plat; that Certificates of Location for the monumented Public Land Survey corners as shown on this plat are on file in the County Recorder's Office (if required under Minnesota Statutes, Section 160.15) and/or the County Surveyor's Office; that this plat meets the requirements of Minnesota Statutes, Section 160.085, Section 160.14 subd. 1, Section 161.16 subd. 2, and Section 161.18; that the parcel ownerships are correctly described and delineated on the plat; and that the proposed right of way boundary lines are correctly designated on the plat.

Certified by Keith M. Kallin License No. 23946 Date 12/19/12 MnDOT District Office

MINNESOTA DEPARTMENT OF TRANSPORTATION RIGHT OF WAY PLAT NO. 25-74

CONTROL SECTION NO. 2506 (52=20) 904 CONTROL SECTION NO. 2506 (52=20) 903 IN GOVERNMENT LOTS 2, 3, 4 & 5 OF SECTION 30, T. 112 N., R. 17 W., GOODHUE COUNTY, MINNESOTA

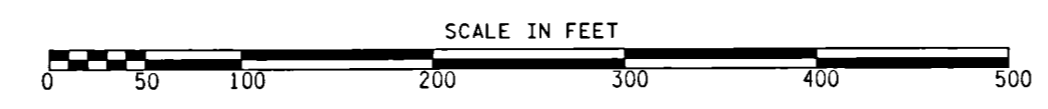
Table with 5 columns: PARCEL, OWNER, LOCATION, NEW T.H. R/W, TEMPORARY EASEMENT, PERMANENT R/W INTEREST. Contains data for parcels 8, 9, 10, 16, 25, 26, 27, 28.



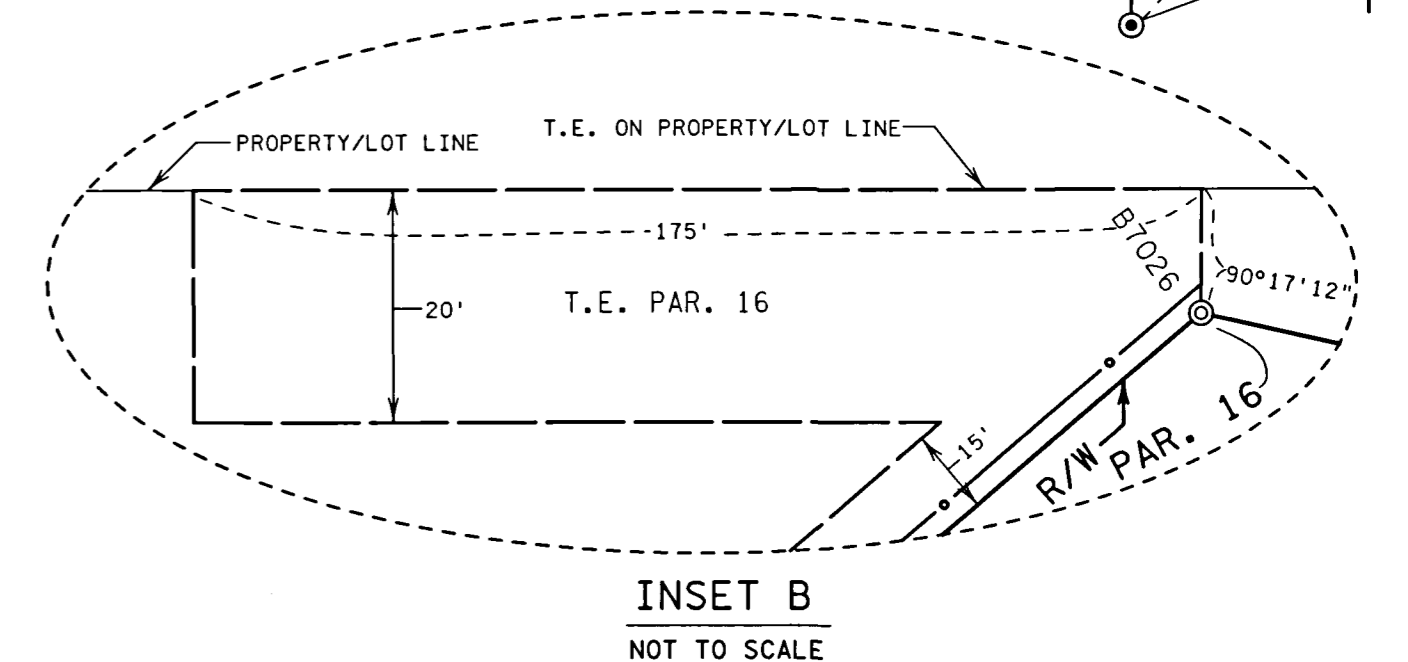
PLAT BOUNDARY DATA table with columns: FROM, TO, DISTANCE (FT), AZIMUTH. Lists boundary points B1 through B44 with their respective distances and azimuths.

AZIMUTH ORIENTATION AND GRID CONVERSION Plat azimuths are oriented to the County Coordinate System with 0 degrees 0 minutes 0 seconds being "GRID NORTH". Plat distances are ground lengths.

- SURVEY STANDARDS 1. The plat values, azimuths, and distances are based on the County coordinate system. 2. The boundary monuments shown on this plat have been field checked for location. The standard deviation for the monument position is 0.10 foot. 3. The county coordinates shown on one monument are based on ties to national control monuments. 4. For details of this survey contact the Surveying Section at the Minnesota Department of Transportation: ROCHESTER, Name of District



CONVENTIONAL SYMBOLS and INSET A NOT TO SCALE. Includes symbols for Section Line, Quarter Line, Sixteenth Line, Property Line, R/W Boundary, Existing D.O.T., R/W Line, And Other Road R/W, Railroad R/W, Private Easement, Temporary Easement, Building Removal Easement, R/W Parcel Number, Access Control, Access Opening, Cast Iron Monument, 2in. x 2in. D.O.T. Iron Tube with Cap, 3/4" D.O.T. Iron Pin, Other Iron Monument, Concrete or Stone Monument, R/W Boundary Corner.



DOC. NO. 601007 OFFICE OF COUNTY RECORDER GOODHUE COUNTY, MINN I HEREBY CERTIFY THAT THIS PLAT HAS BEEN FILED IN THIS OFFICE ON December 19, 2012, AT 8:23 AM IN CAB. COUNTY RECORDER

PLAT NO. 25-74 C.S. 2506 (52=20) 904 C.S. 2506 (52=20) 903