

MINNESOTA DEPARTMENT OF TRANSPORTATION RIGHT OF WAY PLAT NO. 25-99

CONTROL SECTION NO. 2506 (52=20) 903

IN THE SOUTH HALF OF THE NORTHEAST QUARTER OF SECTION 17, T. 111 N., R. 17 W.,
IN THE NORTHEAST QUARTER OF THE SOUTHWEST QUARTER OF SECTION 17, T. 111 N., R. 17 W.,
IN THE NORTHWEST QUARTER OF THE SOUTHWEST QUARTER OF SECTION 16, T. 111 N., R. 17 W.,
GOODHUE COUNTY, MINNESOTA

THE COMMISSIONER OF TRANSPORTATION IS HEREBY DESIGNATING THE DEFINITE LOCATION OF TRUNK HIGHWAY
NO. 52 FROM COUNTY STATE AID HIGHWAY NO. 1 TO 1.5 MILES NORTH

as shown on this plat prepared by the State of Minnesota Department of Transportation is hereby certified as the official plat of that
portion of said T.H. 52 within the designated portion of Sections 16 and 17 and the Commissioner's Order therefor, pursuant to
Minnesota Statutes, Section 160.085, Section 160.14 subd. 1, Section 161.16 subd. 2, and Section 161.18.

It is further ordered that the Commissioner of Transportation's Orders covering any existing right of way, outside of the plat
boundary, shall remain in full force and effect until such time the existing right of way Orders are rescinded.

It is further ordered that it is necessary to acquire all trees, shrubs, grass and herbage within the right of way of said Trunk Highway,
and to keep and have the exclusive control of the same.

Commissioner's Order No.	Location	Nature of Interest
98990	Plat 25-99	Definite location, access, width, channel change and temporary easement.

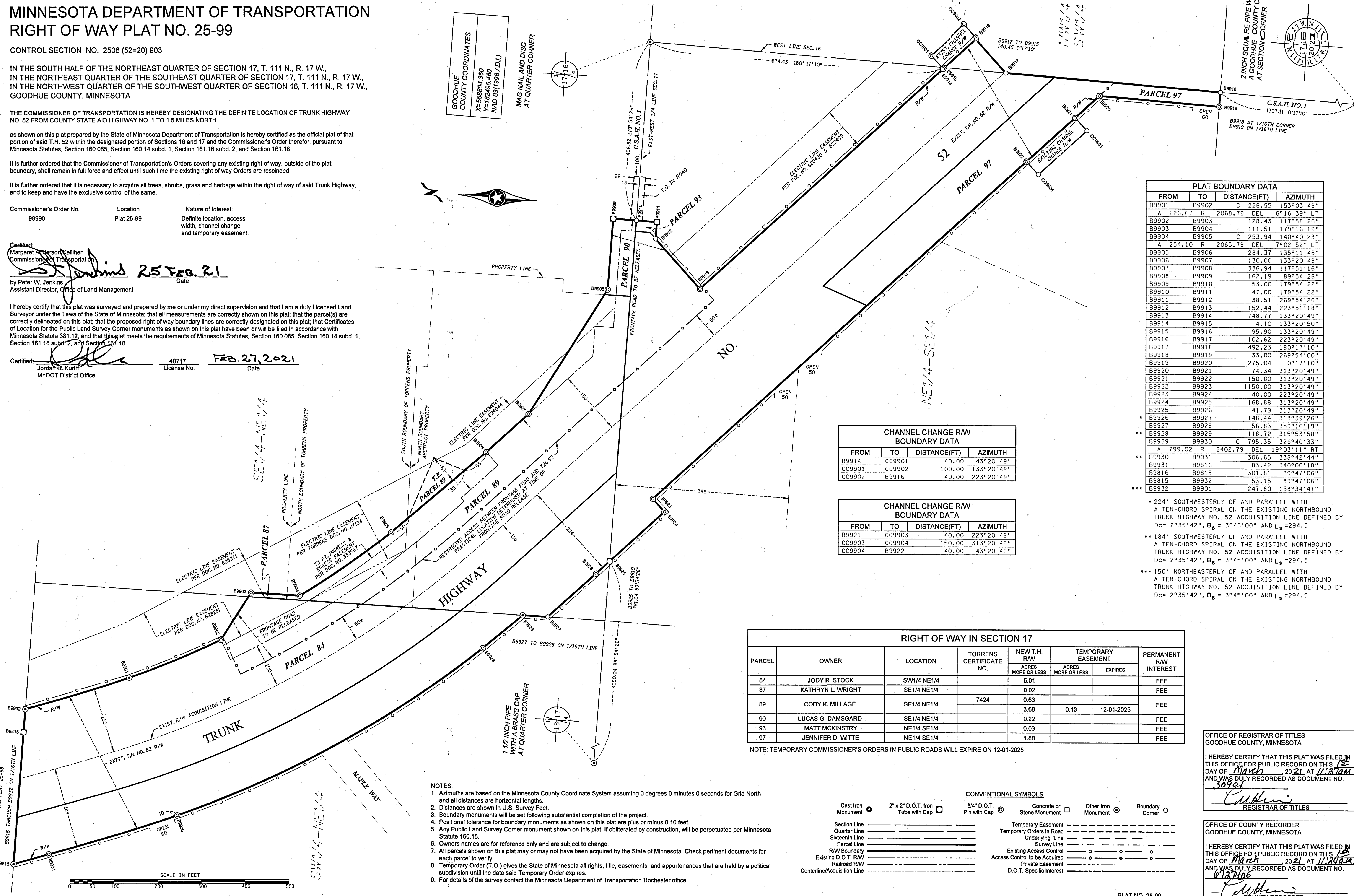
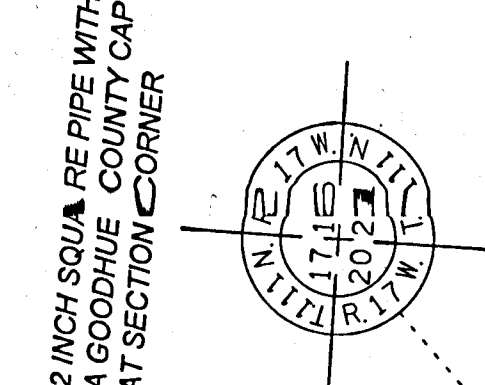
Certified:
Margaret Anderson Kelliher
Commissioner of Transportation
M. Anderson Kelliher
by Peter W. Jenkins
Assistant Director, Office of Land Management
Date: 25 Feb. 21

I hereby certify that this plat was surveyed and prepared by me or under my direct supervision and that I am a duly Licensed Land
Surveyor under the Laws of the State of Minnesota; that all measurements are correctly shown on this plat; that the parcel(s) are
correctly delineated on this plat; that the proposed right of way boundary lines are correctly designated on this plat; that Certificates
of Location for the Public Land Survey Corner monuments as shown on this plat have been or will be filed in accordance with
Minnesota Statute 381.12; and that this plat meets the requirements of Minnesota Statutes, Section 160.085, Section 160.14 subd. 1,
Section 161.16 subd. 2, and Section 161.18.

Certified:
Jordan B. Kurin
MNDOT District Office
License No. 48717
Date: FEB. 27, 2021

GOODHUE
COUNTY COORDINATES
X=668604.360
Y=182496.460
NAD 83(1996 ADJ.)

MAG NAIL AND DISC
AT QUARTER CORNER



PLAT BOUNDARY DATA			
FROM	TO	DISTANCE(FT)	AZIMUTH
B9901	B9902	C 226.55	153°03'49"
A 226.67	R 2068.79	DEL	6°16'39" LT
B9902	B9903	128.43	117°58'26"
B9903	B9904	111.51	179°16'19"
B9904	B9905	C 253.94	140°40'23"
A 254.10	R 2065.79	DEL	7°02'52" LT
B9905	B9906	284.37	135°11'46"
B9906	B9907	130.00	133°20'49"
B9907	B9908	336.94	117°51'16"
B9908	B9909	162.19	89°54'26"
B9909	B9910	53.00	179°54'22"
B9910	B9911	47.00	179°54'22"
B9911	B9912	38.51	269°54'26"
B9912	B9913	152.44	223°51'18"
B9913	B9914	748.77	133°20'49"
B9914	B9915	4.10	133°20'50"
B9915	B9916	95.90	133°20'49"
B9916	B9917	102.62	223°20'49"
B9917	B9918	492.23	180°17'10"
B9918	B9919	33.00	269°54'00"
B9919	B9920	275.04	0°17'10"
B9920	B9921	74.34	313°20'49"
B9921	B9922	150.00	313°20'49"
B9922	B9923	1150.00	313°20'49"
B9923	B9924	40.00	223°20'49"
B9924	B9925	168.88	313°20'49"
B9925	B9926	41.79	313°20'49"
B9926	B9927	148.44	313°39'26"
B9927	B9928	56.83	359°16'19"
B9928	B9929	118.72	315°53'58"
B9929	B9930	C 795.35	326°40'33"
A 799.02	R 2402.79	DEL	19°03'11" RT
B9930	B9931	306.65	338°42'44"
B9931	B9816	83.42	340°00'18"
B9816	B9815	301.81	89°47'06"
B9815	B9932	53.15	89°47'06"
B9932	B9901	247.80	158°34'41"

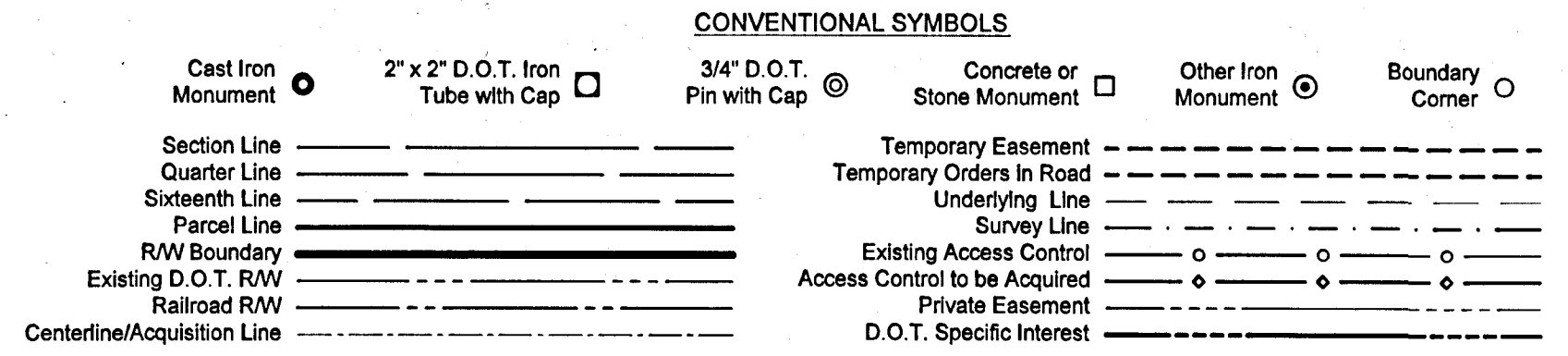
CHANNEL CHANGE RW BOUNDARY DATA			
FROM	TO	DISTANCE(FT)	AZIMUTH
B9914	CC9901	40.00	43°20'49"
CC9901	CC9902	100.00	133°20'49"
CC9902	B9916	40.00	223°20'49"

CHANNEL CHANGE RW BOUNDARY DATA			
FROM	TO	DISTANCE(FT)	AZIMUTH
B9921	CC9903	40.00	223°20'49"
CC9903	CC9904	150.00	313°20'49"
CC9904	B9922	40.00	43°20'49"

RIGHT OF WAY IN SECTION 17						
PARCEL	OWNER	LOCATION	TORRENS CERTIFICATE NO.	NEW T.H. R/W		PERMANENT R/W INTEREST
				ACRES MORE OR LESS	EXPIRES	
84	JODY R. STOCK	SW1/4 NE1/4		5.01		FEE
87	KATHRYN L. WRIGHT	SE1/4 NE1/4		0.02		FEE
89	CODY K. MILLAGE	SE1/4 NE1/4	7424	0.63		FEE
90	LUCAS G. DAMSGARD	SE1/4 NE1/4		3.68	0.13	12-01-2025
93	MATT MCKINSTRY	NE1/4 SE1/4		0.22		FEE
97	JENNIFER D. WITTE	NE1/4 SE1/4		0.03		FEE
99				1.88		FEE

NOTE: TEMPORARY COMMISSIONER'S ORDERS IN PUBLIC ROADS WILL EXPIRE ON 12-01-2025

- NOTES:
- Azimuths are based on the Minnesota County Coordinate System assuming 0 degrees 0 minutes 0 seconds for Grid North and all distances are horizontal lengths.
 - Distances are shown in U.S. Survey Feet.
 - Boundary monuments will be set following substantial completion of the project.
 - Positional tolerance for boundary monuments as shown on this plat is plus or minus 0.10 feet.
 - Any Public Land Survey Corner monument shown on this plat, if obliterated by construction, will be perpetuated per Minnesota Statute 160.15.
 - Owners names are for reference only and are subject to change.
 - All parcels shown on this plat may or may not have been acquired by the State of Minnesota. Check pertinent documents for each parcel to verify.
 - Temporary Order (T.O.) gives the State of Minnesota all rights, title, easements, and appurtenances that are held by a political subdivision until the date said Temporary Order expires.
 - For details of the survey contact the Minnesota Department of Transportation Rochester office.



OFFICE OF REGISTRAR OF TITLES
GOODHUE COUNTY, MINNESOTA

I HEREBY CERTIFY THAT THIS PLAT WAS FILED IN THIS OFFICE FOR PUBLIC RECORD ON THIS DAY OF March 2021 AT 11:20am AND WAS DULY RECORDED AS DOCUMENT NO. 30901

C. Kelliher
REGISTRAR OF TITLES

OFFICE OF COUNTY RECORDER
GOODHUE COUNTY, MINNESOTA

I HEREBY CERTIFY THAT THIS PLAT WAS FILED IN THIS OFFICE FOR PUBLIC RECORD ON THIS DAY OF March 2021 AT 11:20am AND WAS DULY RECORDED AS DOCUMENT NO. 012206

C. Kelliher
COUNTY RECORDER