

MINNESOTA DEPARTMENT OF TRANSPORTATION MONUMENTATION PLAT No. 25-MI

STATE PROJECT 2506(52+20)903

IN GOVERNMENT LOTS 2,3,5,8,9 and 11 IN SECTION 19, T112N., R.17W.
GOODHUE COUNTY, MINNESOTA

I hereby certify that this plat was prepared by me or under my direct supervision and is a correct representation of said survey; that all distances are horizontal ground distances in feet; that differences between azimuths represent plane angles in degrees, minutes and seconds; that the monuments to delineate this survey have been placed in the ground as shown on the plat; and that the right-of-way boundary lines are designated on the plat.

Certified by John E. Guerin 10460 1-13-77
Registered Land Surveyor Reg. No. Date

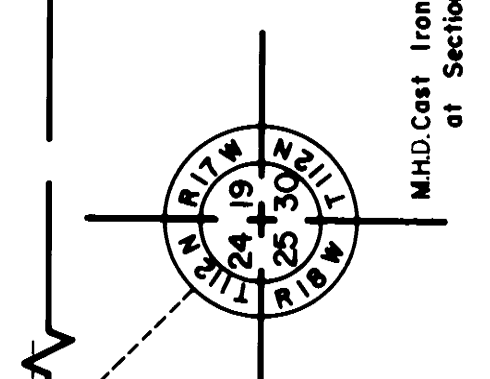
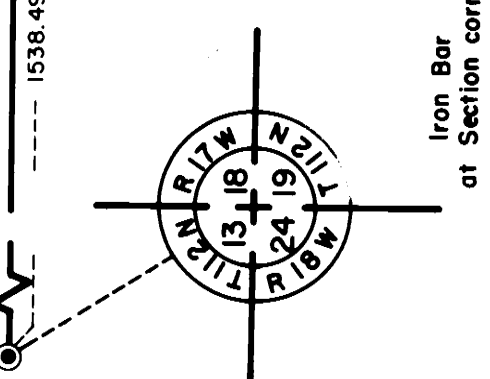
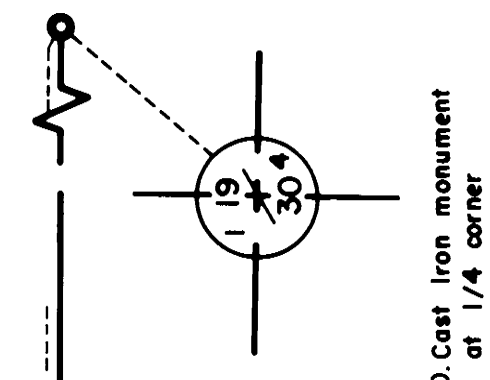
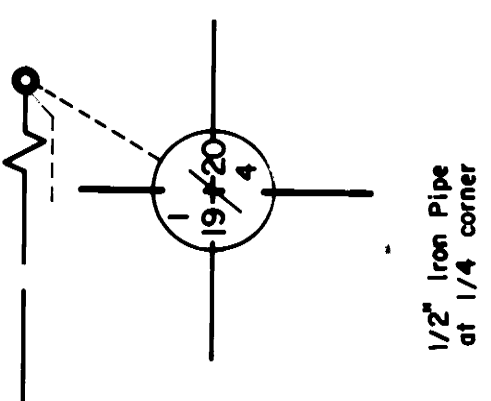
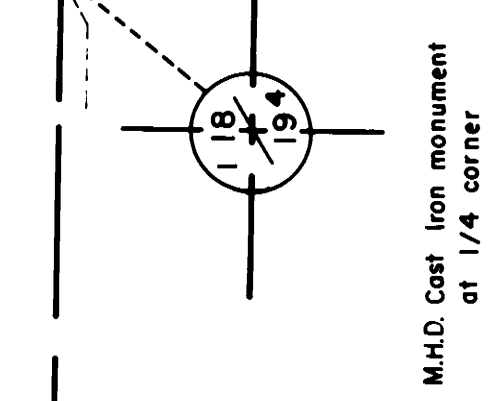
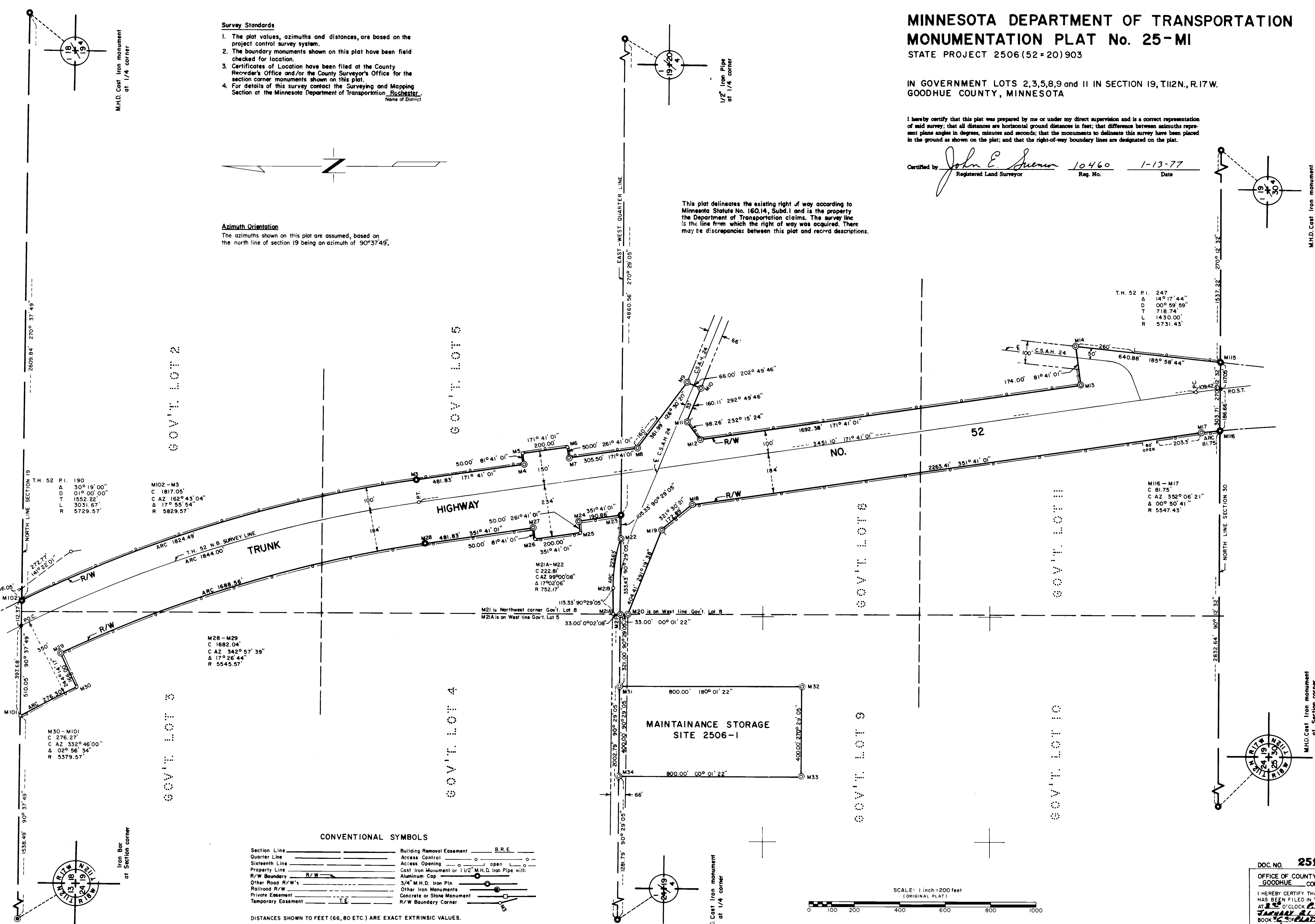
Survey Standards

1. The plat values, azimuths and distances, are based on the project control survey system.
2. The boundary monuments shown on this plat have been field checked for location.
3. Certificates of Location have been filed at the County Recorder's Office and/or the County Surveyor's Office for the section corner monuments shown on this plat.
4. For details of this survey contact the Surveying and Mapping Section at the Minnesota Department of Transportation, Rochester, Name of District

Azimuth Orientation

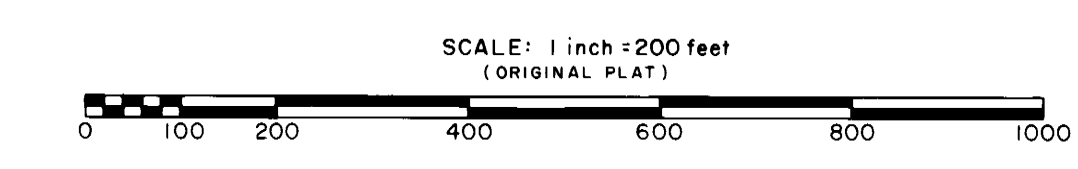
The azimuths shown on this plat are assumed, based on the north line of section 19 being an azimuth of 90°37'49".

This plat delineates the existing right of way according to Minnesota Statute No. 160.14, Subd. 1 and is the property the Department of Transportation claims. The survey line is the line from which the right of way was acquired. There may be discrepancies between this plat and record descriptions.



CONVENTIONAL SYMBOLS

Section Line	Building Removal Easement	B.R.E.
Quarter Line	Access Control	
Sixteenth Line	Access Opening	
Property Line	Cast Iron Monument or 1/2\"/>	
R/W Boundary	Aluminum Cap	
Other Road R/W's	3/4\"/>	
Railroad R/W	Other Iron Monuments	
Private Easement	Concrete or Stone Monument	
Temporary Easement	R/W Boundary Corner	



DISTANCES SHOWN TO FEET (66, 80 ETC.) ARE EXACT EXTRINSIC VALUES.

DOC. NO. 251459

OFFICE OF COUNTY RECORDER
GOODHUE COUNTY, MINN.
I HEREBY CERTIFY THAT THIS PLAT
HAS BEEN FILED IN THIS OFFICE
AT 2:00 O'CLOCK P.M. ON
JANUARY 21, 1977 IN
BOOK 9 OF PLATS, PAGE 3
Cary A. Anderson
COUNTY RECORDER

PLAT 25-MI
S.P. 2506(52+20)903