

GOODHUE COUNTY HIGHWAY RIGHT OF WAY PLAT NUMBER 1

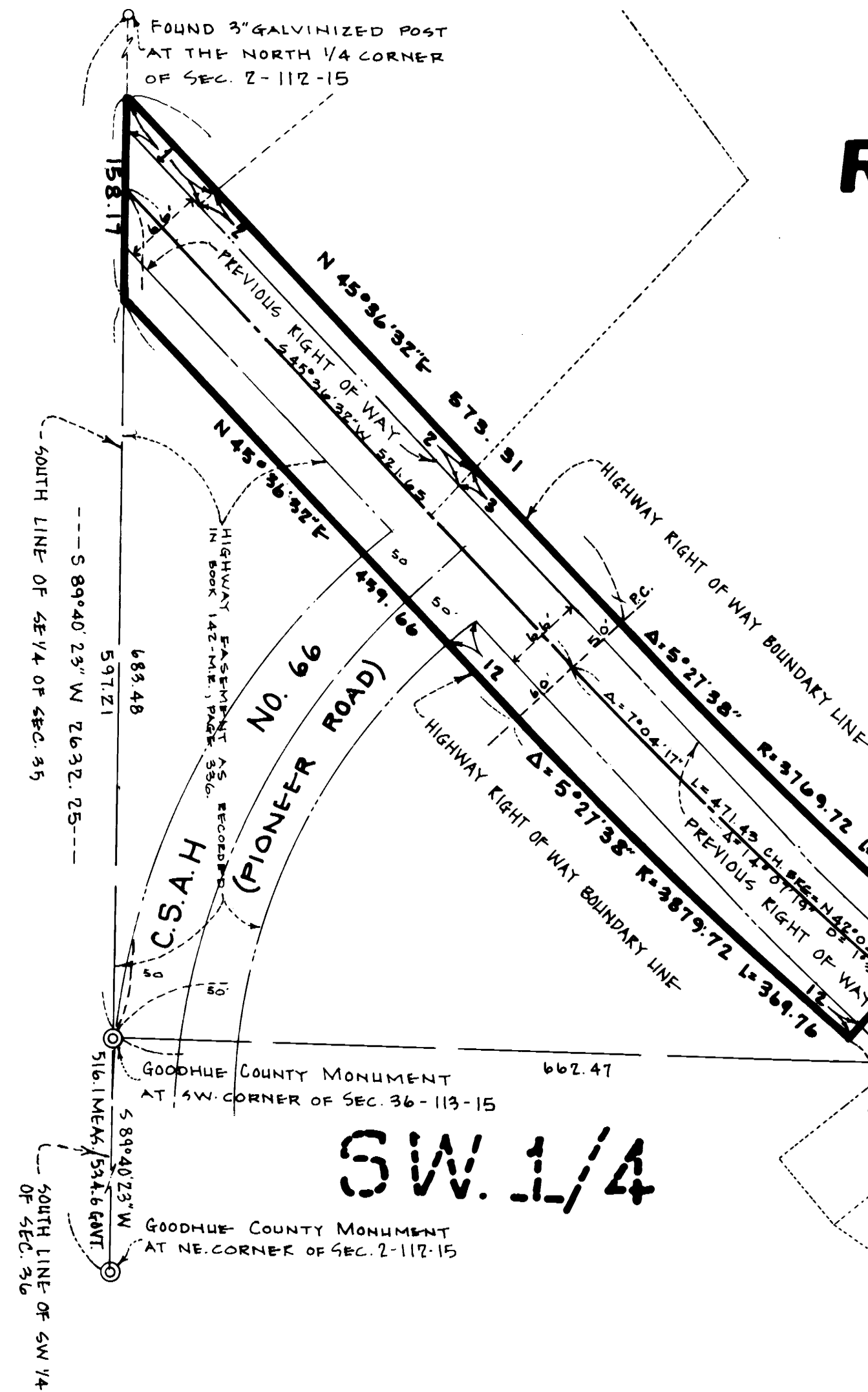
(C.S.A.H. NO. 1 BETWEEN PIONEER ROAD & S.T.H. NO. 61)

--- DENOTES TEMPORARY EASEMENT

TE

NOTE:

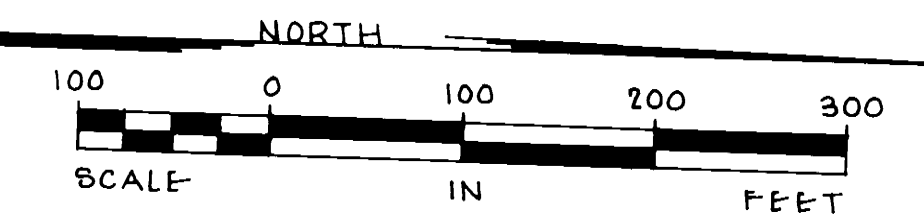
THIS PLAT DOES NOT OPERATE IN ITS SELF TO TRANSFER TITLE OF THE RIGHT OF WAY SHOWN HEREON.



SE. 1/4 OF SEC. 35, T.113, R.15

SW. 1/4

OF SEC. 36, T.113, R.15



BEARINGS ARE ASSUMED

| RIGHT OF WAY IN SECTION 25, T.113, R.15 | | | | | | |
|--|----------------------------------|--|---------------------|---------------------------------|--------------|------------------------|
| PARCEL | OWNER | LOCATION | PERMANENT R/W ACRES | TEMPORARY EASEMENT MORE OR LESS | R/W TURNBACK | PERMANENT R/W INTEREST |
| | LEE LINE INC. | PART OF SW 1/4 OF SW 1/4 | | 0.06 | | |
| RIGHT OF WAY IN SECTION 35, T.113, R.15 | | | | | | |
| 1 | RAYMOND H. & ELSIE A. VOTH | PART OF SE 1/4 OF SE 1/4 | 0.04 | | | FFF |
| 2 | RICHARD E. & ANTONIA M. RUBLE | PART OF SE 1/4 OF SE 1/4 | 0.12 | | | FFF |
| 3 | MATTIE M. LIFTO | PART OF SE 1/4 OF SE 1/4 | 0.29 | 0.23 | | FFF |
| 12 | TROUT-BROOK REALTY CO. | PART OF SE 1/4 OF SE 1/4 | 0.24 | | 0.02 | FFF |
| RIGHT OF WAY IN SECTION 36, T.113, R.15 | | | | | | |
| 5 | PALMER & LUNA JEAN JENSEN | PART OF NW 1/4 OF SW 1/4 | 0.03 | 0.07 | | FFF |
| 6 | WILLIAM & HAZEL JABLONSKI | PART OF NW 1/4 OF SW 1/4 | 0.01 | 0.05 | | FFF |
| 7 | SIDNEY B. & RAYMOND H. LINDSTROM | PART OF NW 1/4 OF SW 1/4 & PART OF W 1/2 OF NW 1/4 | 1.09 | 1.61 | 0.89 | FFF |
| 11 | CHICAGO NORTHWESTERN TRANS. CO. | PART OF NW 1/4 OF SW 1/4 & PART OF NW 1/4 | 1.59 | 0.84 | | FFF |
| 10 | JOHN E. WEDRICKAS | PART OF E 1/2 OF NW 1/4 | 0.53 | 0.60 | | FFF |
| 4 | S.B. FOOT TANNING CO. | PART OF SW 1/4 | 0.35 | 0.74 | 0.80 | FFF |
| RIGHT OF WAY IN SECTIONS 25 & 36, T.113, R.15 & HOYT'S OUTLOTS TO RED WING | | | | | | |
| 4A | S.B. FOOT TANNING CO. | PART OF SW 1/4 & PART OF LOTS 14 & 15 | 0.11 | 0.96 | | FFF |
| RIGHT OF WAY IN HOYT'S OUTLOTS TO RED WING | | | | | | |
| 9 | ROBERT W. PETERSON | PART OF LOTS 14 & 15 | 0.08 | 0.13 | | FFF |
| | JOHN B. FLUEGER | PART OF LOT 16 | | 0.03 | | FFF |
| | IDA BELLE CHAMBERLAIN | PART OF LOT 19 & 20 | | 0.21 | | FFF |
| | ANTHONY J. WEDRICKA | PART OF LOT 11 | | 0.07 | | FFF |

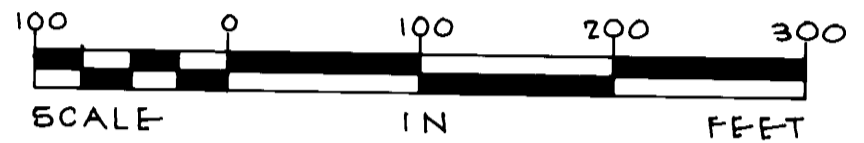
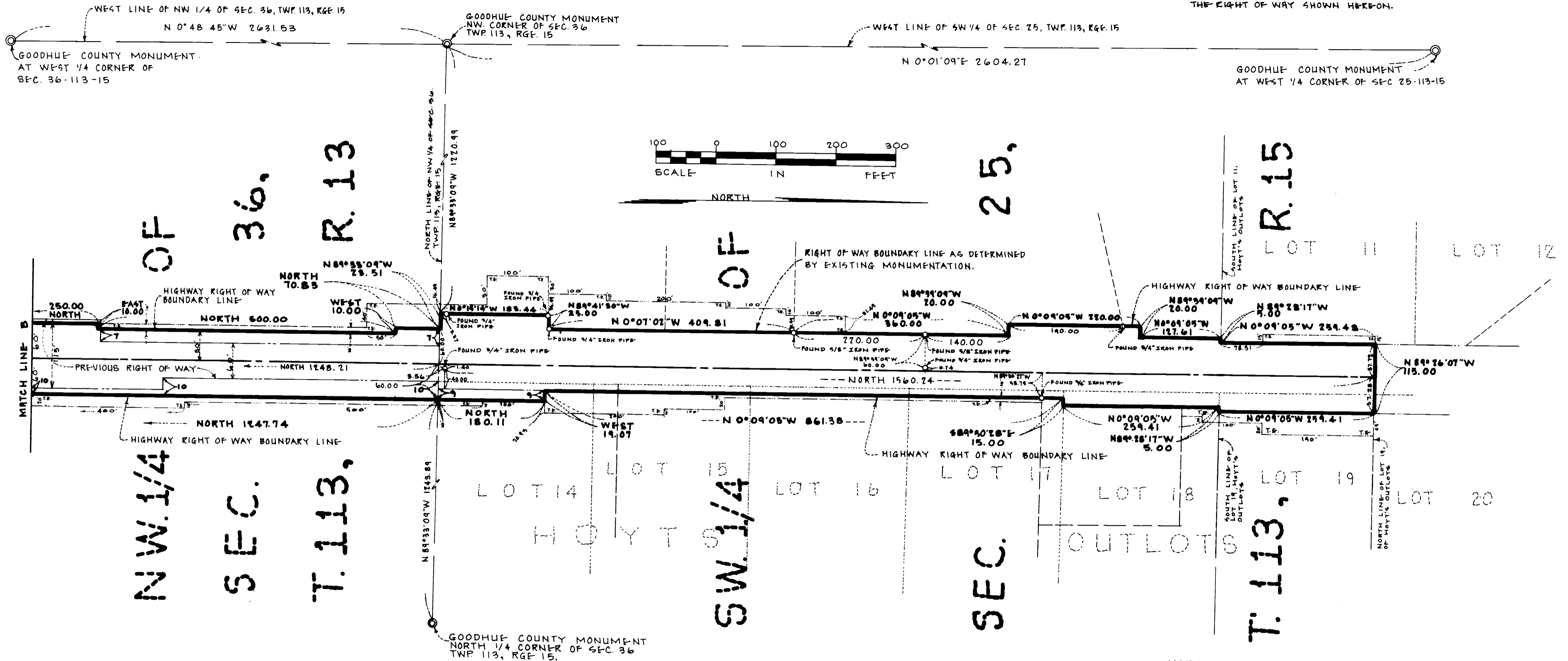
Goodhue County Land Surveying Company, Inc.
 formerly a branch of Harry S. Johnson Companies, Inc.
 433 Main Street, Red Wing, MN 55066 Office: (612) 388-7550
 Homes: (612) 388-3385, (612) 388-4111

GOODHUE COUNTY HIGHWAY RIGHT OF WAY PLAT NUMBER 1

(C.S.A.H. NO. 1 BETWEEN PIONEER ROAD & S.T.H. NO. 61)

NOTE:

THIS PLAT DOES NOT OPERATE IN ITS SELF TO TRANSFER TITLE OF THE RIGHT OF WAY SHOWN HEREON.



The Goodhue County Board of Commissioners has designated the definite location of County State Aid Highway Number 1, between County State Aid Highway Number 66 and State Trunk Highway Number 61.

This plat was approved and accepted by the Board of County Commissioners of the County of Goodhue, State of Minnesota, at a regular meeting held this 7th day of April, 1981 A.D.

Frederick Dahling
FREDERICK DAHLING
CHAIRMAN OF GOODHUE COUNTY BOARD OF COMMISSIONERS

I HEREBY CERTIFY THAT THIS PLAT WAS PREPARED TO DELINEATE THE LOCATION OF SAID COUNTY STATE AID HIGHWAY NUMBER 1 AND TO FACILITATE RIGHT OF WAY ACQUISITION PURSUANT TO CHAPTER 209 OF THE LAWS OF THE STATE OF MINNESOTA FOR 1969, (M.S. 160.085) APPROVED THIS 31st DAY OF March, 1981 A.D.

Michael Pinsonneault
MICHAEL PINSONNEAULT
GOODHUE COUNTY ENGINEER
REGISTRATION NUMBER 10937

I HEREBY CERTIFY THAT THIS PLAT IS A TRUE AND CORRECT REPRESENTATION OF A SURVEY OF THE BOUNDARIES AS SHOWN HEREON AND THAT SAID SURVEY WAS MADE UNDER MY DIRECT SUPERVISION AND THAT I AM A DULY REGISTERED LAND SURVEYOR UNDER THE LAWS OF THE STATE OF MINNESOTA.

David A. Johnson 16 MARCH 1981
DAVID A. JOHNSON
GOODHUE COUNTY SURVEYOR
REGISTRATION NUMBER 12188

NOTE:

THAT PART OF THE HIGHWAY RIGHT OF WAY BOUNDARY WHICH LIES IN SECTION 25, T. 113, R. 15, AS SHOWN ON THIS PLAT, WAS DETERMINED BY EXISTING MONUMENTATION. IN MANY CASES RECORD RIGHT OF WAY DESCRIPTIONS DO NOT CONFORM WITH THE MONUMENTED LOCATION BECAUSE OF PAST SURVEY METHODS AND INSTRUMENTATION, MISSING OR ASSUMED PUBLIC LAND SURVEY CORNERS AND OTHER DEFECTS.

FILED FOR RECORD THIS 7th DAY OF April, 1981 A.D. AT 10 O'CLOCK P.M., IN BOOK 6 OF PLATS, ON PAGES 4-6, 20.

Craig A. Anderson
CRAIG A. ANDERSON
GOODHUE COUNTY RECORDER
DOCUMENT NUMBER 1251191

Goodhue County Land Surveying Company, Inc.
Formerly a branch of Harry S. Johnson Companies, Inc.
433 Main Street, Red Wing, MN 55066 Office: (612) 388-7550
Homes: (612) 388-3385; (612) 388-4114