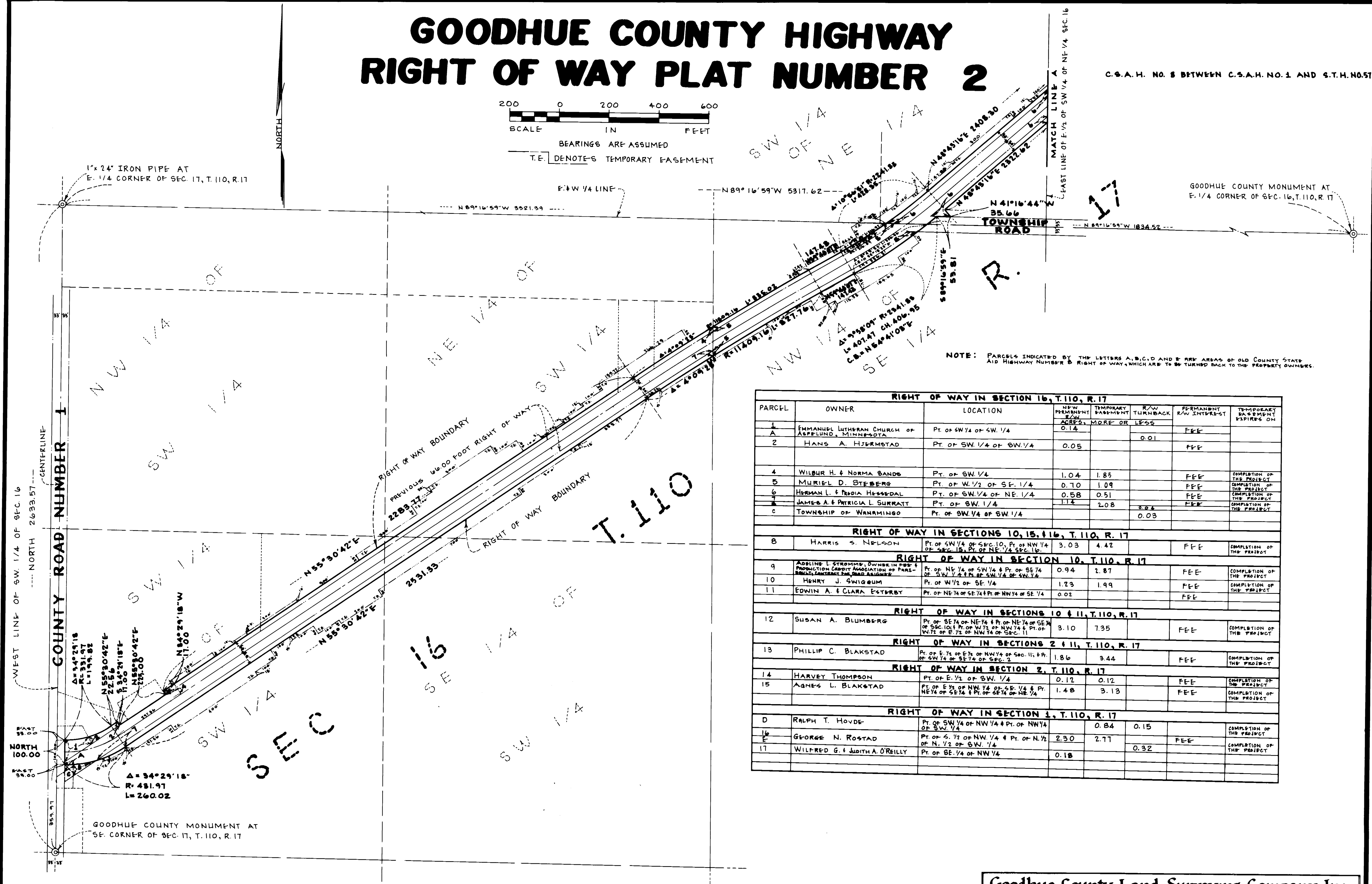
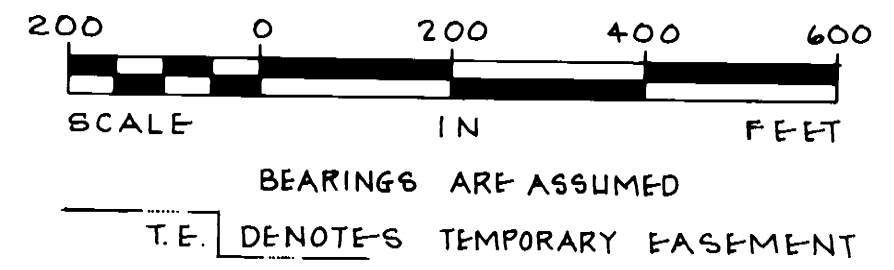


GOODHUE COUNTY HIGHWAY RIGHT OF WAY PLAT NUMBER 2

C.S.A.H. NO. 8 BETWEEN C.S.A.H. NO. 1 AND S.T.H. NO. 57

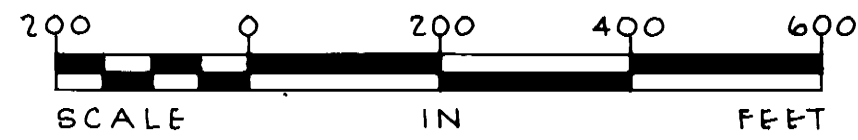


NOTE: PARCELS INDICATED BY THE LETTERS A, B, C, D AND E ARE AREAS OF OLD COUNTY STATE AID HIGHWAY NUMBER 8 RIGHT OF WAY, WHICH ARE TO BE TURNED BACK TO THE PROPERTY OWNERS.

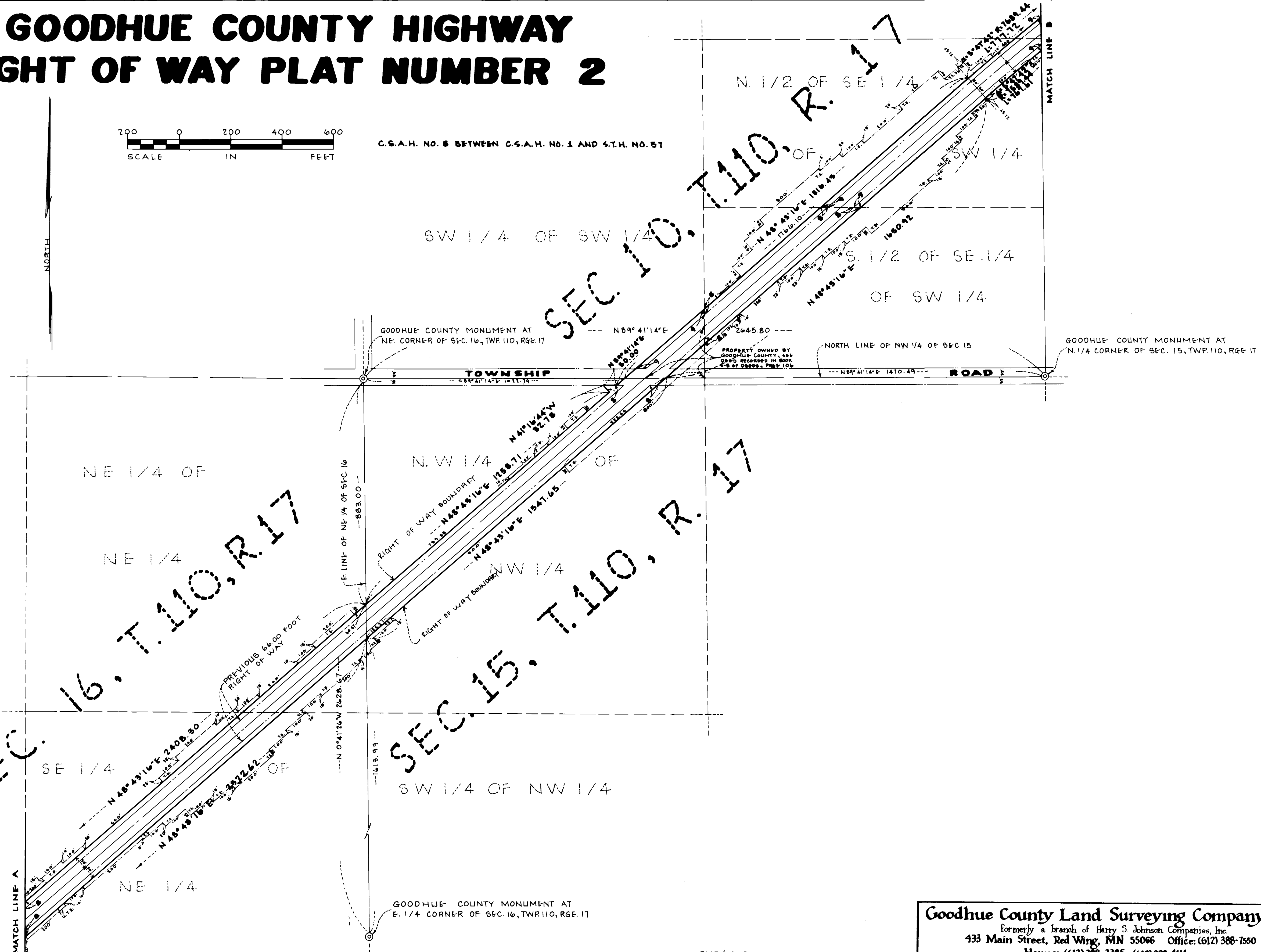
RIGHT OF WAY IN SECTION 16, T. 110, R. 17							
PARCEL	OWNER	LOCATION	NEW PERMANENT R/W ACRES	TEMPORARY EASEMENT R/W ACRES	R/W TURNBACK MORE OR LESS	PERMANENT R/W INTEREST	TEMPORARY EASEMENT EXPIRES ON
1	EMMANUEL LUTHERAN CHURCH OF ASPELUND, MINNESOTA	Pt. of SW 1/4 of SW 1/4	0.14			FEE	
2	HANS A. HJERMOTAD	Pt. of SW 1/4 of SW 1/4	0.05		0.01	FEE	
4	WILBUR H. & NORMA SANDS	Pt. of SW 1/4	1.04	1.85		FEE	COMPLETION OF THE PROJECT
5	MURIEL D. STEBERG	Pt. of W 1/2 of SE 1/4	0.70	1.09		FEE	COMPLETION OF THE PROJECT
6	HERMAN L. & FREDIA HESSEDAL	Pt. of SW 1/4 of NE 1/4	0.58	0.51		FEE	COMPLETION OF THE PROJECT
7	JAMES A. & PATRICIA L. SURRATT	Pt. of SW 1/4	1.12	2.08	0.02	FEE	COMPLETION OF THE PROJECT
8	TOWNSHIP OF WANAMINGO	Pt. of SW 1/4 of SW 1/4			0.03		
RIGHT OF WAY IN SECTIONS 10, 15, & 16, T. 110, R. 17							
8	HARRIS S. NELSON	Pt. of SW 1/4 of SEC. 10, Pt. of NW 1/4 of SEC. 15, Pt. of NE 1/4 SEC. 16	3.03	4.42		FEE	COMPLETION OF THE PROJECT
RIGHT OF WAY IN SECTION 10, T. 110, R. 17							
9	ADRIANE L. STROMME, OWNER IN PART & PRODUCTION CREDIT ASSOCIATION OF PART OF SEC. 10, T. 110, R. 17	Pt. of NE 1/4 of SW 1/4 & Pt. of SE 1/4 of SW 1/4 of SW 1/4 of SW 1/4 of SW 1/4	0.94	2.87		FEE	COMPLETION OF THE PROJECT
10	HENRY J. SWIGBUM	Pt. of W 1/2 of SE 1/4	1.23	1.99		FEE	COMPLETION OF THE PROJECT
11	EDWIN A. & CLARA ESTERBY	Pt. of NE 1/4 of SE 1/4 & Pt. of NW 1/4 of SE 1/4	0.02			FEE	COMPLETION OF THE PROJECT
RIGHT OF WAY IN SECTIONS 10 & 11, T. 110, R. 17							
12	SUSAN A. BLUMBERG	Pt. of SE 1/4 of NE 1/4 & Pt. of NE 1/4 of SE 1/4 of SEC. 10 & Pt. of W 1/2 of NW 1/4 & Pt. of W 1/2 of E 1/2 of NW 1/4 of SEC. 11	3.10	7.35		FEE	COMPLETION OF THE PROJECT
RIGHT OF WAY IN SECTIONS 2 & 11, T. 110, R. 17							
13	PHILLIP C. BLAKSTAD	Pt. of E 1/2 of E 1/2 of NW 1/4 of SEC. 11 & Pt. of SW 1/4 of SE 1/4 of SEC. 2	1.86	3.44		FEE	COMPLETION OF THE PROJECT
RIGHT OF WAY IN SECTION 2, T. 110, R. 17							
14	HARVEY THOMPSON	Pt. of E 1/2 of SW 1/4	0.12	0.12		FEE	COMPLETION OF THE PROJECT
15	AGNES L. BLAKSTAD	Pt. of E 1/2 of NW 1/4 of SE 1/4 & Pt. of NE 1/4 of SE 1/4 & Pt. of SE 1/4 of NE 1/4	1.48	3.13		FEE	COMPLETION OF THE PROJECT
RIGHT OF WAY IN SECTION 1, T. 110, R. 17							
D	RALPH T. HOVDE	Pt. of SW 1/4 of NW 1/4 & Pt. of NW 1/4 of SW 1/4		0.84	0.15		COMPLETION OF THE PROJECT
E	GEORGE N. ROSTAD	Pt. of S 1/2 of NW 1/4 & Pt. of N 1/2 of N 1/2 of SW 1/4	2.30	2.77		FEE	COMPLETION OF THE PROJECT
17	WILFRED G. & JUDITH A. O'REILLY	Pt. of SE 1/4 of NW 1/4	0.18		0.32		COMPLETION OF THE PROJECT

Goodhue County Land Surveying Company, Inc.
 Formerly a branch of Harry S. Johnson Companies, Inc.
 433 Main Street, Red Wing, MN 55066 Office: (612) 388-7550
 Homes: (612) 388-3385, (612) 388-4114

GOODHUE COUNTY HIGHWAY RIGHT OF WAY PLAT NUMBER 2



C.S.A.H. NO. 8 BETWEEN C.S.A.H. NO. 1 AND S.T.H. NO. 57

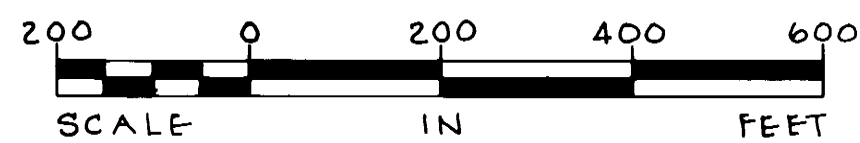


SEC. 16, T. 110, R. 17

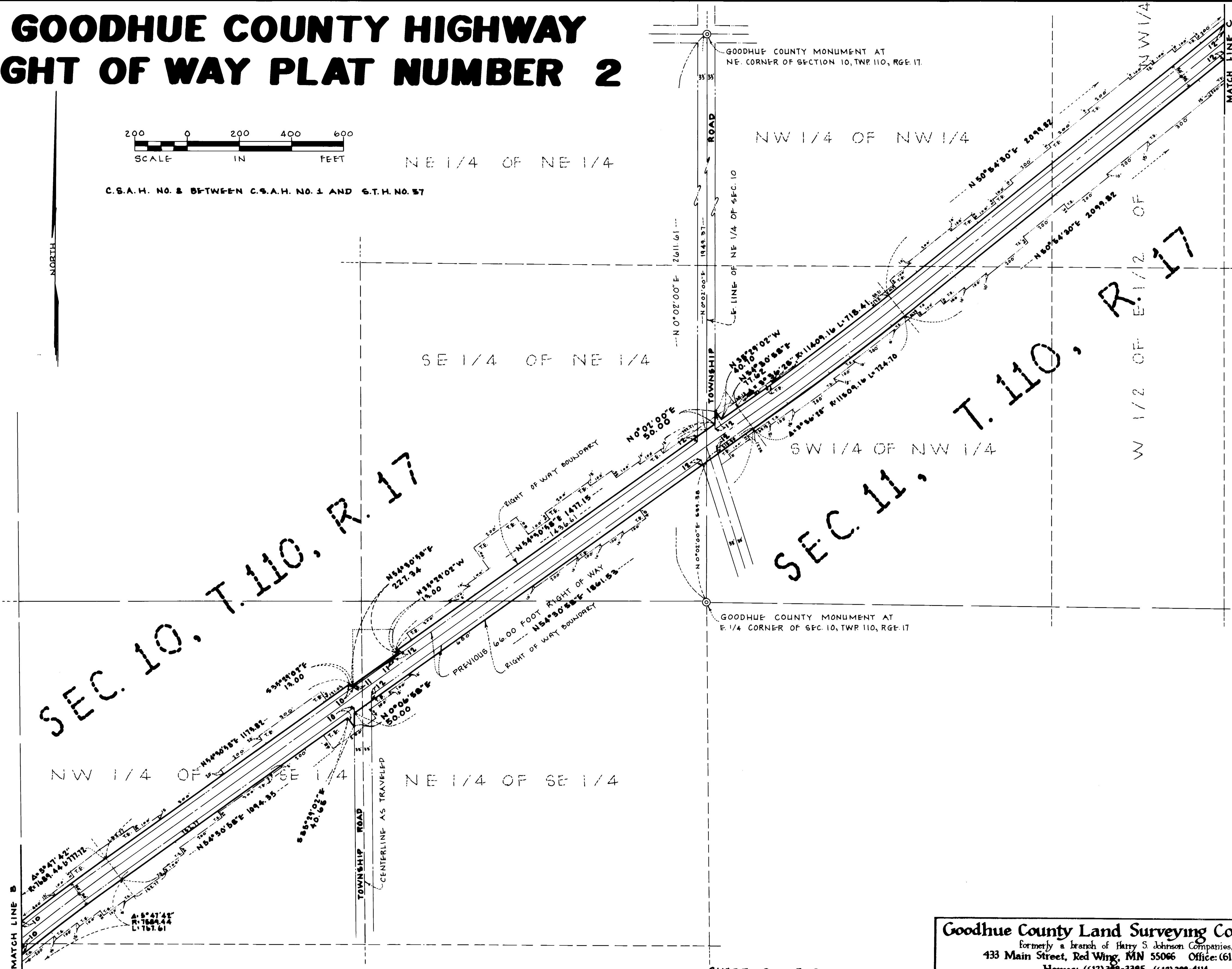
SEC. 15, T. 110, R. 17

Goodhue County Land Surveying Company, Inc.
 formerly a branch of Harry S. Johnson Companies, Inc.
 433 Main Street, Red Wing, MN 55066 Office: (612) 388-7550
 Homes: (612) 388-3385, (612) 388-4114

GOODHUE COUNTY HIGHWAY RIGHT OF WAY PLAT NUMBER 2



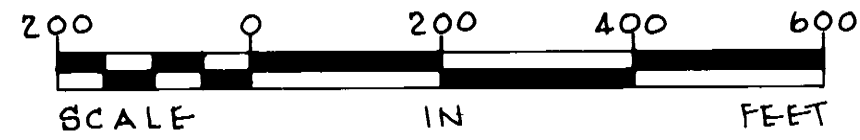
C.S.A.H. NO. 8 BETWEEN C.S.A.H. NO. 1 AND S.T.H. NO. 57



SHEET 3 of 5 SHEETS

Goodhue County Land Surveying Company, Inc.
 formerly a branch of Harry S. Johnson Companies, Inc.
 433 Main Street, Red Wing, MN 55066 Office: (612) 388-7550
 Homes: (612) 388-3385; (612) 388-4114

GOODHUE COUNTY HIGHWAY RIGHT OF WAY PLAT NUMBER 2



C.S.A.H. NO. 8 BETWEEN C.S.A.H. NO. 1 AND S.T.H. NO. 51

NORTH

GOODHUE COUNTY MONUMENT AT
E. 1/4 CORNER OF SEC. 2, TWP. 110, RGE. 17

60°08'51"W
9.08

MATCH LINE D

80°08'51"W 2614.06
E. LINE OF SE 1/4 OF SEC. 2

GOODHUE COUNTY MONUMENT AT
NE. CORNER OF SEC. 11, TWP. 110, RGE. 17

SE 1/4 OF SW 1/4

OF SEC 2

SW 1/4

OF SEC 2

SE 1/4 OF SE 1/4

OF SEC 2

NW 1/4 OF NE 1/4

OF SEC 11

SEC 2

11, T. 110, R. 17

MATCH LINE C
E 1/2 OF NW 1/4 OF SEC. 11

E 1/2 OF NW 1/4

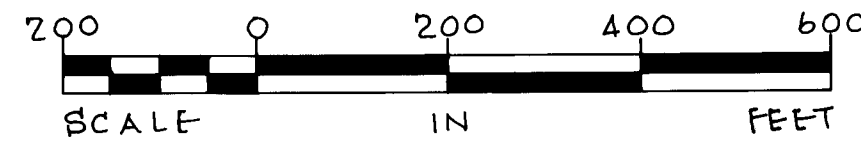
E 1/2 OF SE 1/4 OF SEC 2

R 17

Goodhue County Land Surveying Company, Inc.
formerly a branch of Harry S. Johnson Companies, Inc.
433 Main Street, Red Wing, MN 55066 Office: (612) 388-7550
Homes: (612) 388-3385, (612) 388-4111

SHEET 4 OF 5 SHEETS

GOODHUE COUNTY HIGHWAY RIGHT OF WAY PLAT NUMBER 2



C.S.A.H. NO. 8 BETWEEN C.S.A.H. NO. 1 AND S.T.H. NO. 57

NORTH

THE GOODHUE COUNTY BOARD OF COMMISSIONERS HAS DESIGNATED THE DEFINITE LOCATION OF COUNTY STATE AID HIGHWAY NUMBER 8, BETWEEN COUNTY STATE AID HIGHWAY NUMBER 1 AND STATE HIGHWAY NUMBER 57.

THIS PLAT WAS APPROVED AND ACCEPTED BY THE BOARD OF COUNTY COMMISSIONERS OF THE COUNTY OF GOODHUE, STATE OF MINNESOTA, AT A REGULAR MEETING HELD THIS 27th DAY OF April, 1981 A.D.

Frederick Dahling
FREDERICK DAHLING
CHAIRMAN OF GOODHUE COUNTY BOARD OF COMMISSIONERS

I HEREBY CERTIFY THAT THIS PLAT WAS PREPARED TO DELINEATE THE LOCATION OF SAID COUNTY STATE AID HIGHWAY NUMBER 8 AND TO FACILITATE RIGHT OF WAY ACQUISITION PURSUANT TO CHAPTER 209 OF THE LAWS OF THE STATE OF MINNESOTA FOR 1969, (M.S. 160.085). APPROVED BY ME THIS 31st DAY OF MARCH, 1981 A.D.

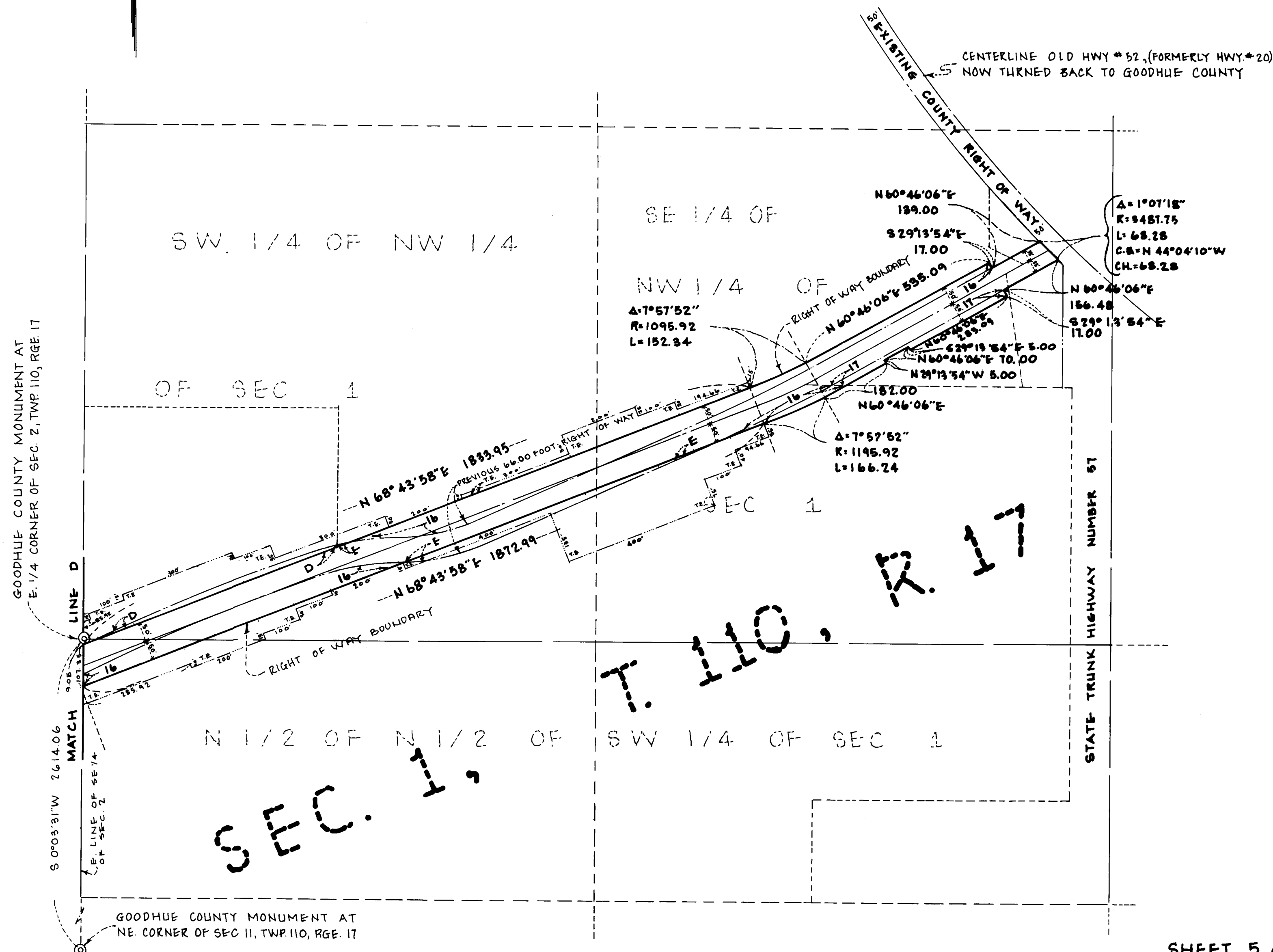
Michael Pinsonneault
MICHAEL PINSONNEAULT
GOODHUE COUNTY ENGINEER
REGISTRATION NUMBER 10957

I HEREBY CERTIFY THAT THIS PLAT IS A TRUE AND CORRECT REPRESENTATION OF A SURVEY OF THE BOUNDARIES AS SHOWN HEREON AND THAT SAID SURVEY WAS MADE UNDER MY DIRECT SUPERVISION AND THAT I AM A DULY REGISTERED LAND SURVEYOR UNDER THE LAWS OF THE STATE OF MINNESOTA.

David A. Johnson
DAVID A. JOHNSON
GOODHUE COUNTY SURVEYOR
REGISTRATION NUMBER 12788
DATE: 16 MARCH 1981

FILED FOR RECORD THIS 27th DAY OF April, 1981 A.D., AT 1:40 O'CLOCK P.M., IN BOOK C OF PLATS, ON PAGE 2-42

Craig A. Anderson
CRAIG A. ANDERSON
GOODHUE COUNTY RECORDER
DOCUMENT NUMBER 275045



Goodhue County Land Surveying Company, Inc.
 formerly a branch of Harry S. Johnson Companies, Inc.
 433 Main Street, Red Wing, MN 55066 Office: (612) 388-7550
 Homes: (612) 388-3385, (612) 388-4114

GC2