

RIGHT OF WAY IN SECTION 35 T112N R18W				
PARCEL	OWNER	LOCATION	NEW HIGHWAY R/W ACRES (more or less)	PERMANENT R/W INTEREST
1	Edgar N. Olson	Pt. NE 1/4 SW 1/4	1.86	Easement
2	Merle D. Tate and Helen C. Tate	Pt. SE 1/4 NW 1/4	0.36	Easement
3	Roy C. Husbyn and Gladys Husbyn	Pt. SW 1/4 NE 1/4, SE 1/4 NE 1/4, NW 1/4 SE 1/4	1.05	Easement
4	Lorraine G. Moorhouse and Ethel R. Smith	Pt. NE 1/4 SE 1/4	0.56	Easement
5	Francis A. Gall and Ellen A. Gall	Pt. SE 1/4 NE 1/4	0.02	Easement
6	Edward F. Millet and Jacquelyn L. Millet	Pt. SE 1/4 NE 1/4	1.02	Easement
RIGHT OF WAY IN SECTION 36 T112N R18W				
7	Lee C. Noreen and Dorothy A. Noreen to Arden D. Forehand and Patricia Forehand C/D	Pt. SW 1/4 NW 1/4, NW 1/4 NW 1/4, NE 1/4 NW 1/4	3.07	Easement
8	Lawrence M. Coss and Virginia C. Coss	Pt. SW 1/4 NW 1/4, NW 1/4 NW 1/4	0.90	Easement
9	Oxford Sportsmans Club	Pt. NE 1/4 NW 1/4	0.07	Easement
10	John B. Walls and Jeanine A. Walls	Pt. NE 1/4 NW 1/4	0.44	Easement
RIGHT OF WAY IN SECTION 25 T112N R18W				
11	Ray W. Wynne and Mariellen A. Wynne	Pt. SE 1/4 SW 1/4	0.04	Easement

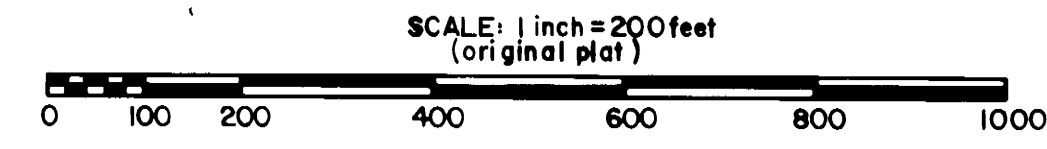
THE GOODHUE COUNTY BOARD OF COMMISSIONERS IS HEREBY DESIGNATING THE DEFINITE LOCATION OF COUNTY STATE AID HIGHWAY NO. 24 BETWEEN THE EAST LINE OF THE NORTHWEST QUARTER OF THE SOUTHWEST QUARTER OF SECTION 35 AND THE NORTH LINE OF SECTION 36. THE PORTION OF SAID HIGHWAY AS SHOWN ON THIS PLAT PREPARED JOINTLY BY THE DEPARTMENT OF HIGHWAYS AND THE COUNTY SURVEYOR OF GOODHUE COUNTY, IS HEREBY CERTIFIED AS THE OFFICIAL PLAT PURSUANT TO COUNTY BOARD RESOLUTION NO. 1 AND MINNESOTA STATUTES CHAPTER 160.085 AND CHAPTER 160.14, SUB. 1.

Certified by W. G. W. W. County Highway Engineer Registration No. 10957 Date 9-12-83
Carl Pigg, Chairman Goodhue County Board of Commissioners

I hereby certify that this plat was prepared by me or under my direct supervision and that I am a duly Registered Land Surveyor under the laws of the State of Minnesota; that this plat meets the requirements of Minnesota Statutes Chapter 160.085 and Chapter 160.14, Subd. 1; that the monuments for the guidance of future surveys will be correctly placed in the ground as shown after completion of construction; that all measurements are correctly shown on this plat; and that the proposed right of way boundary lines are correctly designated on this plat.

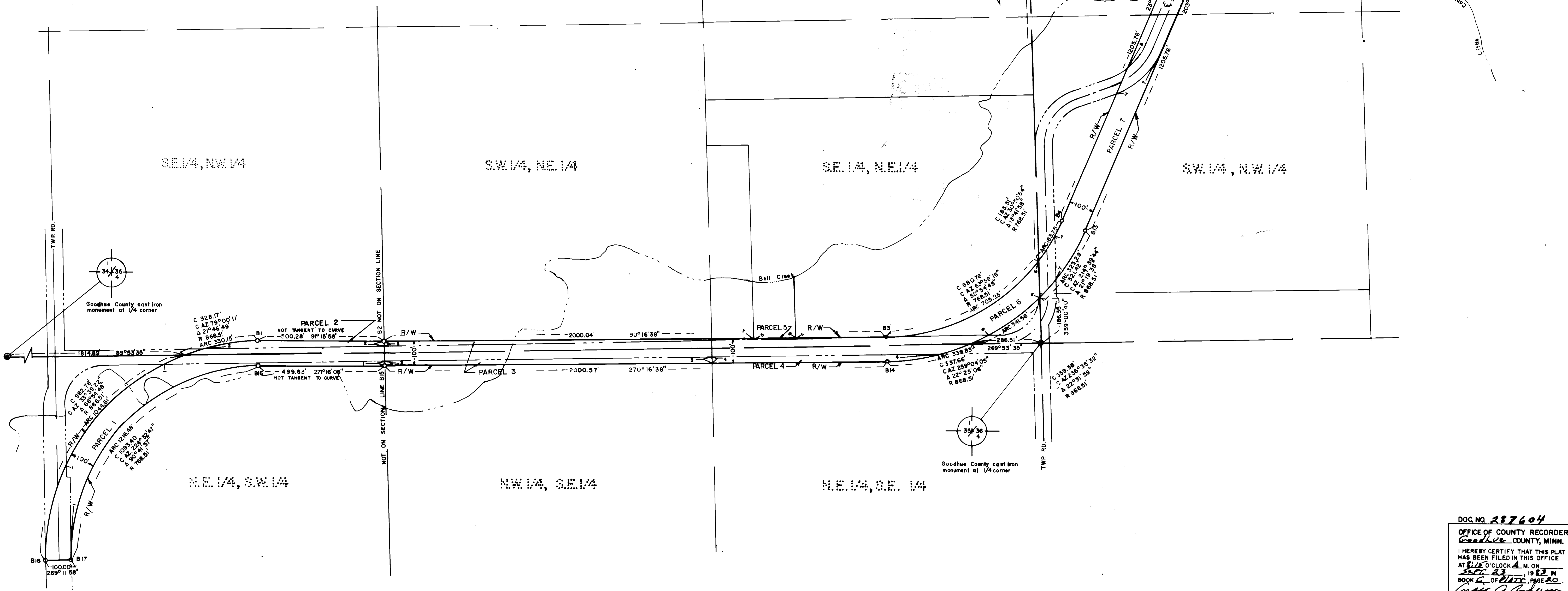
Certified by W. G. W. W. Registration No. 13144 Date 7-28-82

- CONVENTIONAL SYMBOLS
- Section Line _____
 - Quarter Line _____
 - Sixteenth Line _____
 - Property Line _____
 - R/W Boundary _____
 - Old Road R/W Line _____
 - R/W Parcel No. 2



AZIMUTH ORIENTATION
 Plat azimuths are assumed, based on the east-west quarter line of Section 35, T. 112N., R. 18W. being an azimuth of 89° 53' 35".

GOODHUE COUNTY
 RIGHT OF WAY PLAT No. 3
 S.A.P. 25-624-05



DOC. NO. 287604
 OFFICE OF COUNTY RECORDER
 Goodhue COUNTY, MINN.
 I HEREBY CERTIFY THAT THIS PLAT HAS BEEN FILED IN THIS OFFICE AT 11:00 O'CLOCK A.M. ON 9-23-83 BOOK OF PLATS, PAGE 20
W. G. W. W.
 COUNTY RECORDER

ORIGINAL