

# GOODHUE COUNTY HIGHWAY RIGHT OF WAY PLAT NO. 5

THE GOODHUE COUNTY BOARD OF COMMISSIONERS IS HEREBY DESIGNATING THE DEFINITE LOCATION OF COUNTY HIGHWAY NO. 30 BETWEEN THE EAST LINE OF SECTION 21 AND THE EAST LINE OF SECTION 22, TOWNSHIP 110 NORTH, RANGE 17 WEST.

THE PORTION OF SAID HIGHWAY AS SHOWN ON THIS PLAT JOINTLY PREPARED BY THE COUNTY HIGHWAY DEPARTMENT AND THE COUNTY SURVEYOR OF GOODHUE COUNTY, IS HEREBY CERTIFIED AS THE OFFICIAL PLAT PURSUANT TO MINNESOTA STATUTES CHAPTER 160.085.

I hereby certify that the highway location and right of way is correctly designated on this plat.

Certified by *William J. Surratt* Registration No. 10957 Date 4.28.86  
COUNTY ENGINEER

I hereby certify that this plat was prepared by me or under my direct supervision and that I am a duly Registered Land Surveyor under the laws of the State of Minnesota, that this plat meets the requirements of Minnesota Statutes Chapter 160.085, that all measurements are correctly shown on this plat, and that the proposed right of way boundary lines are correctly designated on this plat.

Certified by *Jeffrey T. Jones* Registration No. 13144 Date 4/20/86  
COUNTY SURVEYOR

RIGHT OF WAY IN SECTION 22, T.110 N. R.17 W.						
PARCEL	OWNER	LOCATION	EXIST. HIGHWAY R/W acres (more or less)	NEW HIGHWAY R/W acres (more or less) exclud. exist. R/W	PERMANENT R/W INTEREST	
1	Garvin Brain	The NW 1/4 SW 1/4	1.45	0.56	Easement	
2	James A. Surratt and Patricia J. Surratt	The SW 1/4 SW 1/4	0.52	0.47	Easement	
3	Grant D. Hoven and Cathy M. Hoven	PT. SE 1/4 SW 1/4 PT. SW 1/4 SW 1/4	0.05	0.29	Easement	
4	Virgil L. Qvistad	PT. SE 1/4 SW 1/4 PT. SW 1/4 SW 1/4	0.15	0.57	Easement	
5	Garvin A. Friese	PT. NW 1/4 SE 1/4 The NE 1/4 SE 1/4	2.78	0.72	Easement	
6	Robert Haller	PT. NW 1/4 SE 1/4	1.55	0.57	Easement	
7	John A. Flom and Diane M. Flom	PT. SW 1/4 SE 1/4	0.24	0.26	Easement	
8	Maurice E. Kylo and Evelyn I. Kylo	The SE 1/4 SE 1/4	0.31	1.90	Easement	

CONVENTIONAL SYMBOLS

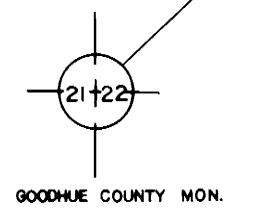
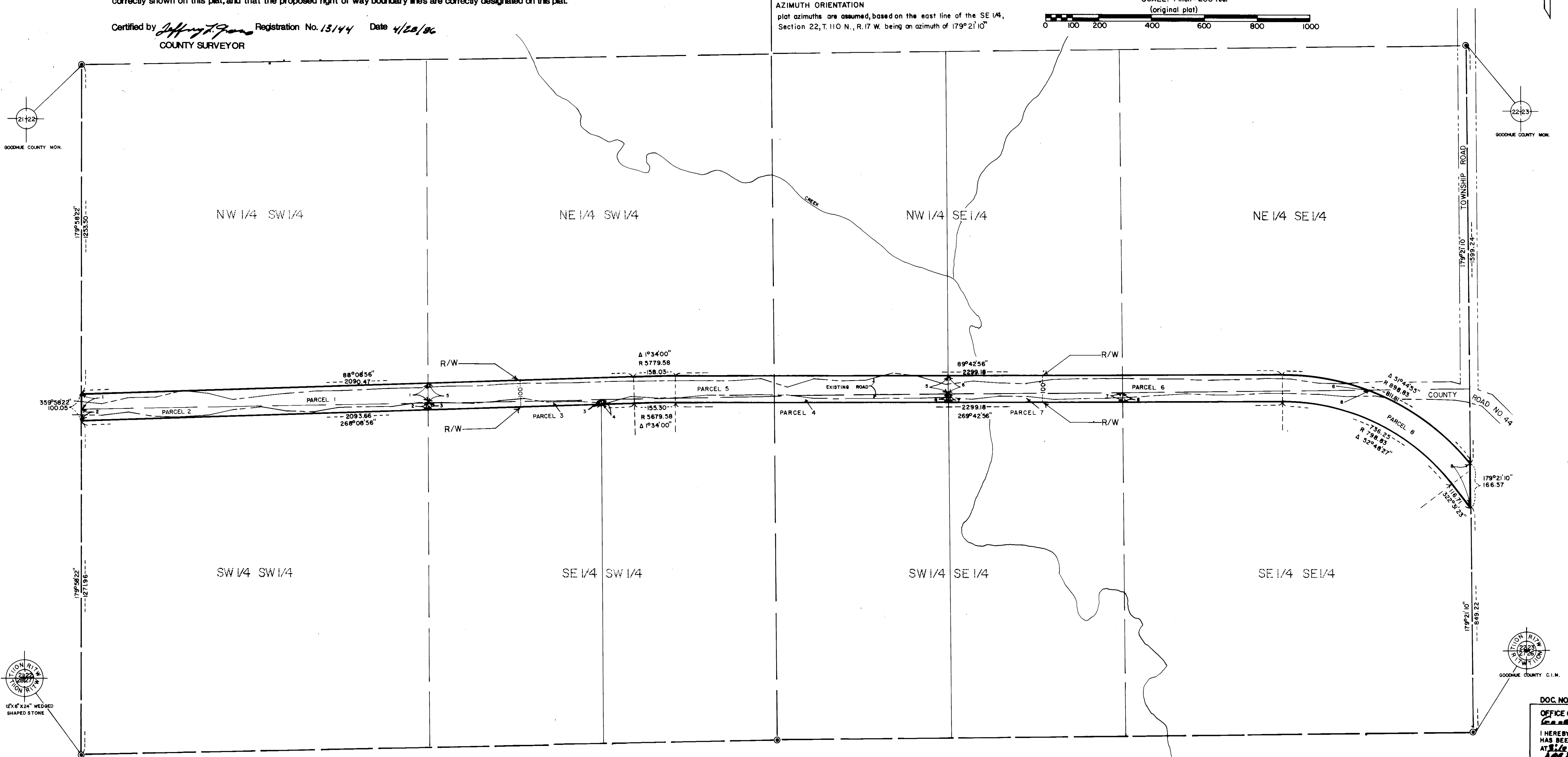
- Section Line \_\_\_\_\_
- Quarter Line \_\_\_\_\_
- Sixteenth Line \_\_\_\_\_
- Property Line \_\_\_\_\_
- R/W Boundary \_\_\_\_\_
- Exist. Road R/W \_\_\_\_\_
- R/W Parcel No. \_\_\_\_\_
- Other Road R/W \_\_\_\_\_



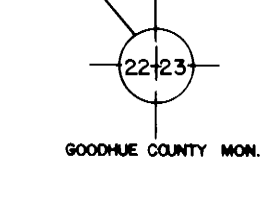
SCALE: 1 inch = 200 feet  
(original plat)



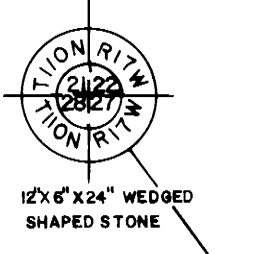
AZIMUTH ORIENTATION  
plat azimuths are assumed, based on the east line of the SE 1/4,  
Section 22, T.110 N., R.17 W. being an azimuth of 179°21'10"



GOODHUE COUNTY MON.



GOODHUE COUNTY MON.



1276 6" x 24" WEDGED SHAPED STONE



GOODHUE COUNTY C.I.M.

DOC NO. 3044-86  
OFFICE OF COUNTY RECORDER  
Goodhue County, Minn.  
I HEREBY CERTIFY THAT THIS PLAT  
HAS BEEN FILED IN THIS OFFICE  
AT 1:00 O'CLOCK P.M. ON  
APR 1 1986  
BOOK 2 OF PLATS, PAGE 22  
Cass A. Anderson  
COUNTY RECORDER