

# GOODHUE COUNTY HIGHWAY RIGHT OF WAY PLAT NO. 25

THE GOODHUE COUNTY BOARD OF COMMISSIONERS IS HEREBY DESIGNATING THE DEFINITE LOCATION OF COUNTY HIGHWAY NO. 2 AS FOLLOWS: BEGINNING AT A POINT 723 FEET EAST OF THE EAST QUATER CORNER SECTION 10, T112N, R13W; THENCE RUNNING IN A NORTHEASTERLY DIRECTION TO A POINT 2011 FEET EAST AND 1067 FEET NORTH OF THE EAST QUATER CORNER SECTION 10, T112N, R13W

THE PORTION OF SAID HIGHWAY AS SHOWN ON THIS PLAT JOINTLY PREPARED BY THE COUNTY HIGHWAY DEPARTMENT AND THE COUNTY SURVEYOR OF GOODHUE COUNTY, IS HEREBY CERTIFIED AS THE OFFICIAL PLAT PURSUANT TO MINNESOTA STATUTES CHAPTER 160.085.

I hereby certify that the highway location and right of way is correctly designated on this plat:

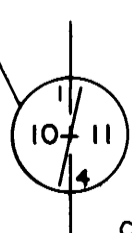
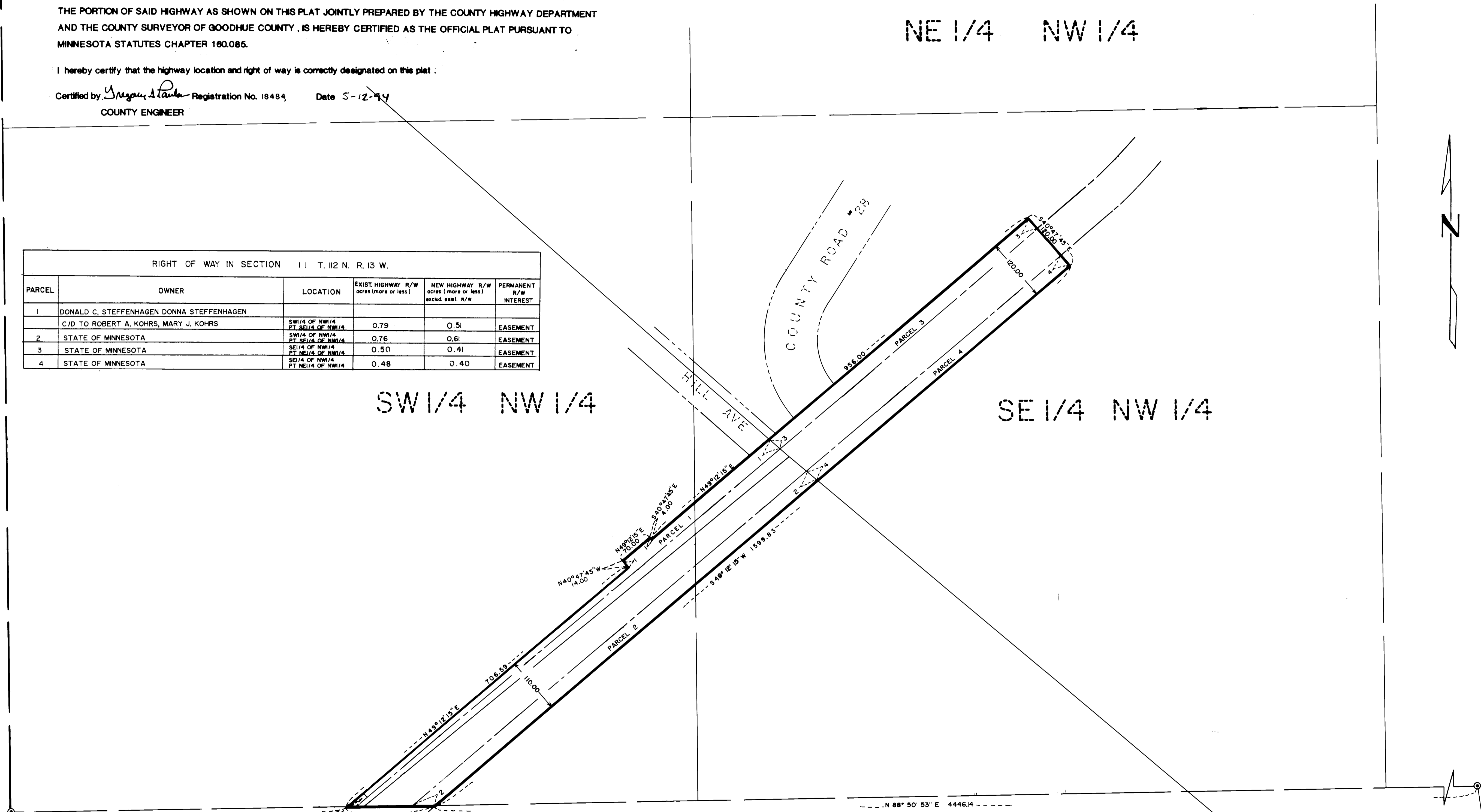
Certified by *Gregory A. Paulsen* Registration No. 18484 Date 5-12-94  
COUNTY ENGINEER

NE 1/4 NW 1/4

RIGHT OF WAY IN SECTION 11 T. 112 N. R. 13 W.					
PARCEL	OWNER	LOCATION	EXIST. HIGHWAY R/W acres (more or less)	NEW HIGHWAY R/W acres (more or less) exclud. exist. R/W	PERMANENT R/W INTEREST
1	DONALD C. STEFFENHAGEN DONNA STEFFENHAGEN	SW 1/4 OF NW 1/4 PT. SE 1/4 OF NW 1/4	0.79	0.51	EASEMENT
2	C/D TO ROBERT A. KOHRS, MARY J. KOHRS	SW 1/4 OF NW 1/4 PT. SE 1/4 OF NW 1/4	0.76	0.61	EASEMENT
3	STATE OF MINNESOTA	SE 1/4 OF NW 1/4 PT. NE 1/4 OF NW 1/4	0.50	0.41	EASEMENT
4	STATE OF MINNESOTA	SE 1/4 OF NW 1/4 PT. NE 1/4 OF NW 1/4	0.48	0.40	EASEMENT

SW 1/4 NW 1/4

SE 1/4 NW 1/4



C.I.M. MON. STAMPED MINN. D.N.R. AT THE 1/4 COR.

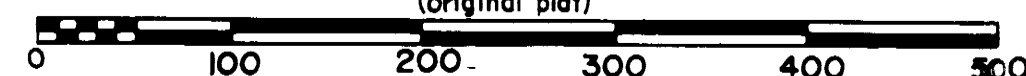
**AZIMUTH ORIENTATION**

Orientation of this azimuth system is based on the Goodhue County South Zone Coordinate System

**CONVENTIONAL SYMBOLS**

- Section Line \_\_\_\_\_
- Quarter Line \_\_\_\_\_
- Sixteenth Line \_\_\_\_\_
- Property Line \_\_\_\_\_
- R/W Boundary \_\_\_\_\_
- Exist. Road R/W \_\_\_\_\_
- R/W Parcel No. \_\_\_\_\_
- Other Road R/W \_\_\_\_\_

SCALE: 1 inch = 100 feet (original plat)



I hereby certify that this plat was prepared by me or under my direct supervision and that I am a duly Registered Land Surveyor under the laws of the State of Minnesota, that this plat meets the requirements of Minnesota Statutes Chapter 160.085, that all measurements are correctly shown on this plat, and that the proposed right of way boundary lines are correctly designated on this plat.

Certified by *Jeffrey J. Jones* Registration No. 13144 Date 5/12/94  
COUNTY SURVEYOR



DOC. NO. 374716  
OFFICE OF COUNTY RECORDER  
GOODHUE COUNTY, MINN.  
I HEREBY CERTIFY THAT THIS PLAT HAS BEEN FILED IN THIS OFFICE AT 2:00 O'CLOCK P.M. ON MAY 13, 1994 IN BOOK OF \_\_\_\_\_ COUNTY RECORDER