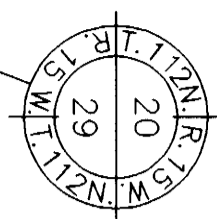


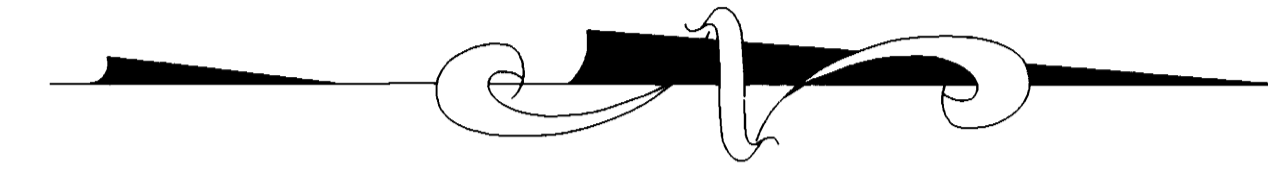
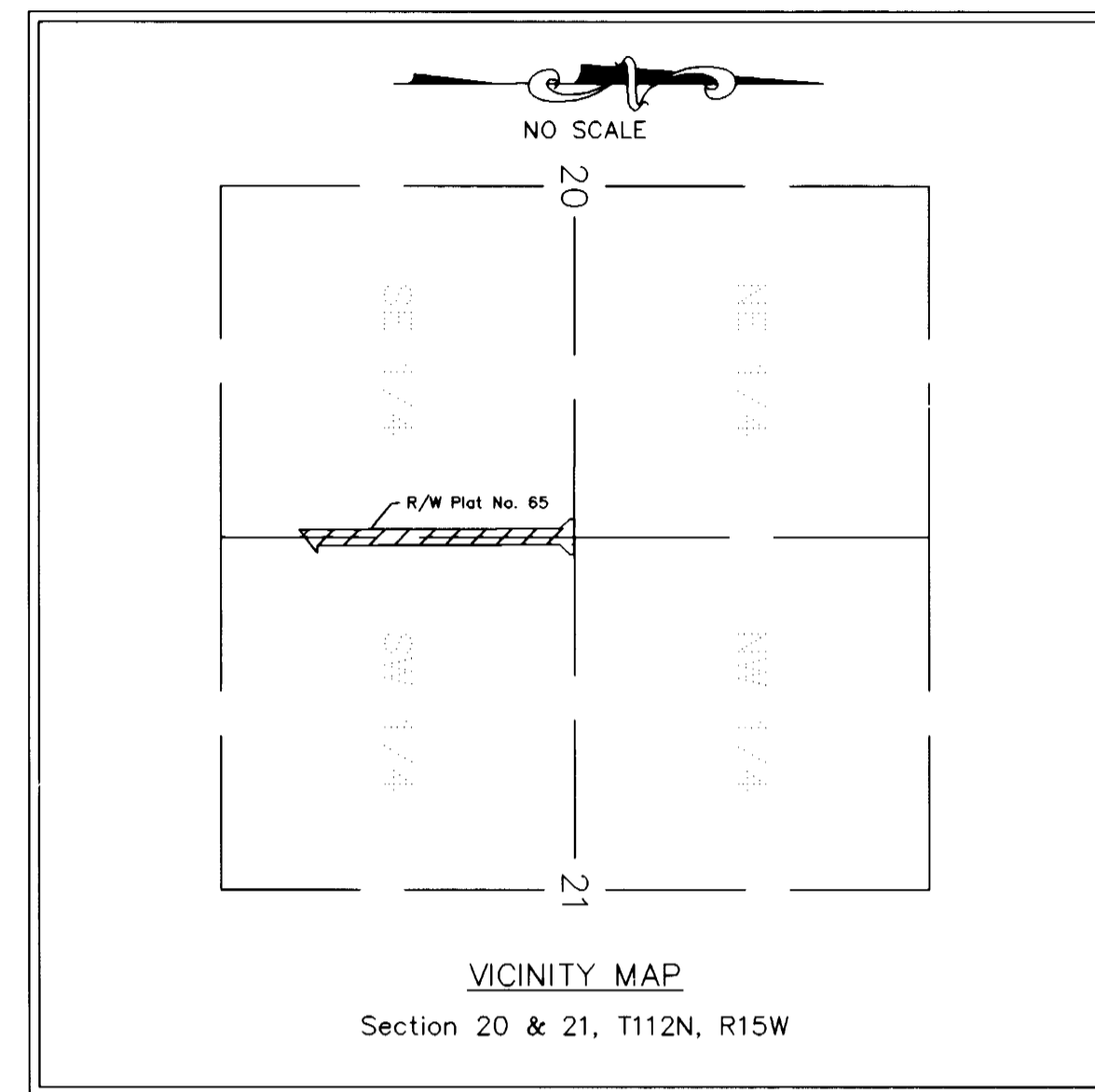
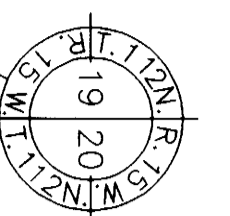
GOODHUE COUNTY RIGHT OF WAY PLAT NO. 79

County Road No. 53

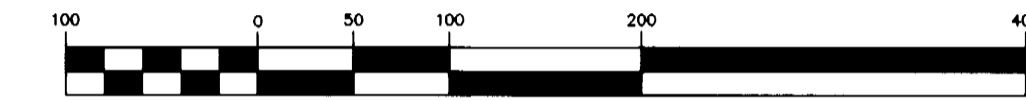
Goodhue County Monument



Goodhue County Monument



GRAPHIC SCALE



(IN FEET)

1 inch = 100 ft.

AZIMUTH ORIENTATION

This azimuth system is based on the N.A.D. 83 State Plane Coordinate System through the Goodhue County Coordinate System with North being 0 degrees 00 minutes 00 seconds and all azimuths referenced clockwise from North.

2649.25' 90°25'12"

C.S.A.H. No. 1

2651.51' 270°10'45"

THE GOODHUE COUNTY BOARD OF COMMISSIONERS IS HEREBY DESIGNATING THE DEFINITE LOCATION OF COUNTY ROAD NO. 53 BETWEEN THE SOUTH LINE OF THE SOUTHEAST QUARTER AND THE NORTH LINE OF SOUTHEAST QUARTER OF SECTION 20, TOWNSHIP 112 NORTH, RANGE 15 WEST, GOODHUE COUNTY.

PORTION OF SAID HIGHWAY AS SHOWN ON THIS PLAT JOINTLY PREPARED BY THE COUNTY HIGHWAY DEPARTMENT AND THE COUNTY SURVEYOR OF GOODHUE COUNTY, IS HEREBY CERTIFIED AS THE OFFICIAL PLAT PURSUANT TO MINNESOTA STATUTES CHAPTER 160.085.

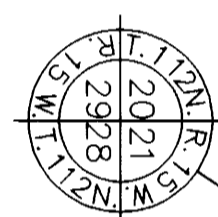
I hereby certify that the highway location and right of way is correctly designated on this plat.

Certified by Morgan A. Paulson Registration No. 18484 Date 4/17/95
County Engineer

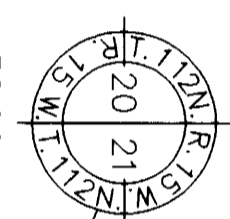
I hereby certify that this plat was prepared by me or under my direct supervision and that I am a duly Licensed Land Surveyor under the laws of the State of Minnesota, that this plat meets the requirements of Minnesota Statutes Chapter 160.085, that all measurements are correctly shown on this plat, and that the proposed right of way boundary lines are correctly designated on this plat.

Certified by Alfred J. Gorman License No. 13144 Date 4/17/95
County Surveyor

Goodhue County Monument



Goodhue County Monument



GOODHUE COUNTY R/W PLAT NO. 80

RIGHT OF WAY IN SECTION 20 AND 21, T112N, R15W					
PARCEL	OWNER	LOCATION	EXIST. HIGHWAY R/W acres (more or less)	NEW HIGHWAY R/W acres (more or less) exclud. exist. R/W	PERMANENT R/W INTEREST
1	DONALD B. GADIENT AND ARTHUR W. GADIENT	SE 1/4 OF SE 1/4 SEC 20	0.54	0.35	FEE
2	PAUL D. GADIENT & PATRICIA A. GADIENT	NE 1/4 OF SE 1/4 SEC 20	1.00	0.78	FEE
3	DANIEL A. AND JANIS L. SCHALLER AS JOINT TENANTS C/D TO MARTIN AND ALTHEA VOTH AS JOINT TENANTS	NW 1/4 OF SW 1/4 SEC 21	1.01	1.10	FEE
4	CLARENCE AND ANNES VOTH AS JOINT TENANTS C/D TO MARTIN P. AND ALTHEA A. VOTH AS JOINT TENANTS	SW 1/4 OF SW 1/4 SEC 21	0.52	0.52	FEE

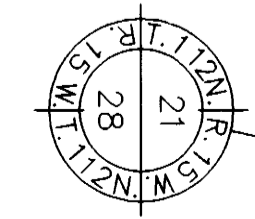
CONVENTIONAL SYMBOLS

- Section Line
- Quarter Line
- Sixteenth Line
- Property Line
- R/W Boundary
- Existing Road R/W
- R/W Parcel No.
- Other Road R/W

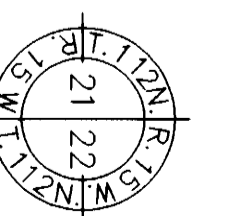
Document No. **383312**

I hereby certify that this instrument was filed in the office of the County Recorder for record this 24th day of April, 1995, at 1:02 o'clock P.M., and was duly recorded in the Goodhue County Records as file number 3154.

Craig Anderson
Craig A. Anderson Deputy
Goodhue County Recorder



Goodhue County Monument



Goodhue County Monument