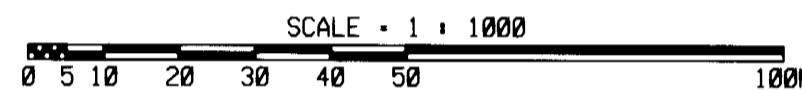
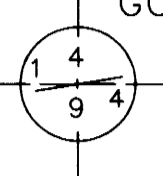


# GOODHUE COUNTY RIGHT OF WAY PLAT NO. 112

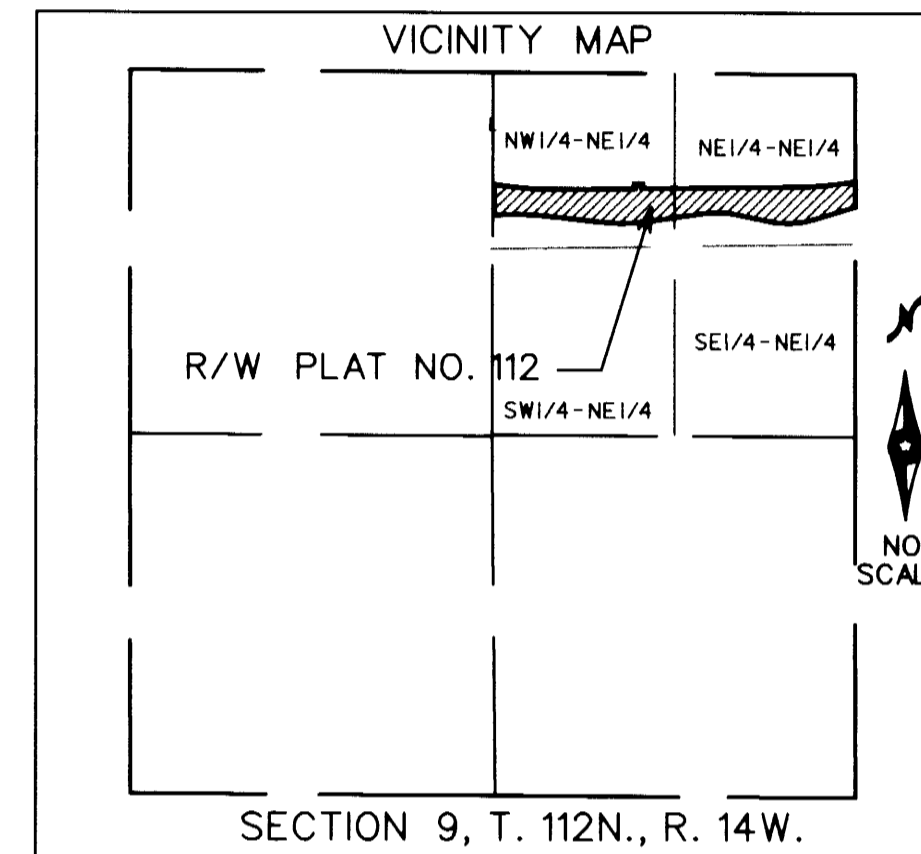
## County Road No. 21

GOODHUE COUNTY MONUMENT



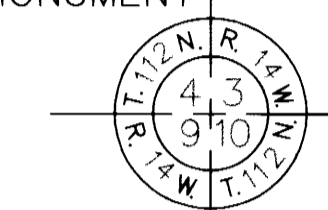
THE GOODHUE COUNTY BOARD OF COMMISSIONERS IS HEREBY DESIGNATING THE DEFINITE LOCATION OF COUNTY HIGHWAY NO. 21 BETWEEN A POINT ON THE NORTH-SOUTH QUARTER LINE OF SECTION 9, T. 112N., R. 14W., 266.951 METERS SOUTH OF THE NORTH QUARTER CORNER OF SECTION 9, TO A POINT ON THE EAST LINE OF SECTION 9, T. 112N., R. 14W., 271.172 METERS SOUTH OF THE NORTHEAST CORNER OF SECTION 9.

THE PORTION OF SAID HIGHWAY AS SHOWN ON THIS PLAT JOINTLY PREPARED BY THE COUNTY HIGHWAY DEPARTMENT AND THE COUNTY SURVEYOR OF GOODHUE COUNTY IS HEREBY CERTIFIED AS THE OFFICIAL PLAT PURSUANT TO MINNESOTA STATUTES CHAPTER 160.085



NE 1/4-NE 1/4

GOODHUE COUNTY MONUMENT



EAST LINE OF SEC. 9

179° 54' 47"  
252.562m  
(828.58)

Δ = 6° 20' 10" (RT)  
R = 881.712m (2,892.75)  
L = 97.504m (319.90)  
CH AZ = 263° 35' 35"

Δ = 2° 29' 13" (RT)  
R = 875.000m (2,870.73)  
L = 37.981m (124.61)  
CH AZ = 268° 00' 16"

356° 45' 40"  
6.712

359° 14' 53"  
6.712

Parcel 1

Parcel 1

Parcel 2

Parcel 2

Existing Right of Way

Δ = 10° 02' 53" (RT)  
R = 881.712m (2,892.75)  
L = 154.670m (507.45)  
CH AZ = 274° 16' 25"

269° 14' 53"  
156.323m (512.87)

179° 14' 53"  
11.713m (38.43)

269° 14' 53"  
17.701m (58.07)

359° 14' 53"  
11.713m (38.43)

37.92

14.38

269° 14' 53"  
335.312m (1,100.11)

180° 00' 22"  
68.774m (225.64)

359° 54' 47"  
56.263m (184.59)

Δ = 10° 39' 19"  
R = 589.942m (1,935.50)  
L = 109.711m (359.94)  
CH AZ = 90° 47' 24"

122.671m (402.46)  
96° 07' 03"

Δ = 14° 21' 45"  
R = 460.058m (1,509.37)  
L = 115.324m (378.36)  
CH AZ = 88° 56' 11"

72.50

120.269m (394.58)  
81° 45' 18"

Δ = 20° 01' 02"  
R = 189.941m (623.17)  
L = 66.359m (217.71)  
CH AZ = 91° 45' 49"

78.236m (256.68)  
101° 46' 20"

Δ = 28° 48' 47"  
R = 195.068m (639.95)  
L = 98.096m (321.84)  
CH AZ = 87° 21' 57"

97.725m (320.60)  
72° 57' 33"

**AZIMUTH ORIENTATION**

This azimuth system is based on the N.A.D. 83 State Plane Coordinate System through the Goodhue County Coordinate System with North being 0 degrees 00 minutes 00 seconds and all azimuths referenced clockwise from North.

I hereby certify that this plat was prepared by me or under my direct supervision and that I am a duly Licensed Land Surveyor under the laws of the State of Minnesota, that this plat meets the requirements of Minnesota Statutes Chapter 160.085, that all measurements are correctly shown on this plat, and that the proposed right of way boundary lines are correctly designated on this plat.

Certified by *Jeffrey J. Jensen* License No. 13144  
County Surveyor

Date 6/6/97

I hereby certify that the highway location and right of way is correctly designated on this plat.

Certified by *Margaret Paulsen* License No. 18484  
County Engineer

Date 6/6/97

Document No. 405451

I hereby certify that this instrument was filed in the office of the County Recorder for record this 24th day of June, 1997, at 2:00 o'clock A.M., and was duly recorded in the Goodhue County Records as file number 322B  
*Craig A. Anderson*  
Craig A. Anderson  
Goodhue County Recorder  
Deputy

**RIGHT OF WAY IN SECTION 9, T. 112N., R. 14W.**

PARCEL	OWNER	LOCATION	EXIST. HIGHWAY R/W		NEW HIGHWAY R/W		PERMANENT R/W INTEREST
			hectare	acre	hectare	acre	
1	Byron W. Boldt and Karen J. Boldt	NE 1/4	0.000	0.00	3.777	9.33	FEE
2	Goodhue County, Minnesota	NE 1/4	1.627	4.02	1.626	4.02	FEE

**CONVENTIONAL SYMBOLS**

- Section Line \_\_\_\_\_
- Quarter Line \_\_\_\_\_
- Sixteenth Line \_\_\_\_\_
- Property Line \_\_\_\_\_
- R/W Boundary \_\_\_\_\_
- Existing Road R/W \_\_\_\_\_
- R/W Parcel No. \_\_\_\_\_
- Other Road R/W \_\_\_\_\_
- Existing Plat R/W \_\_\_\_\_
- Access Control \_\_\_\_\_