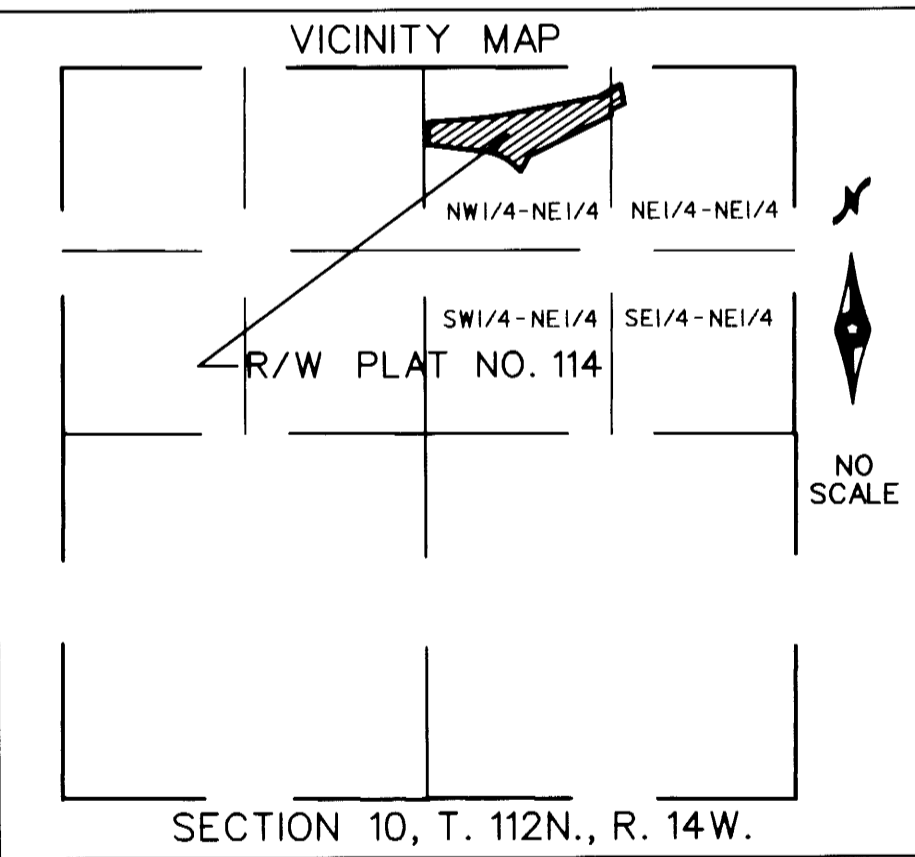
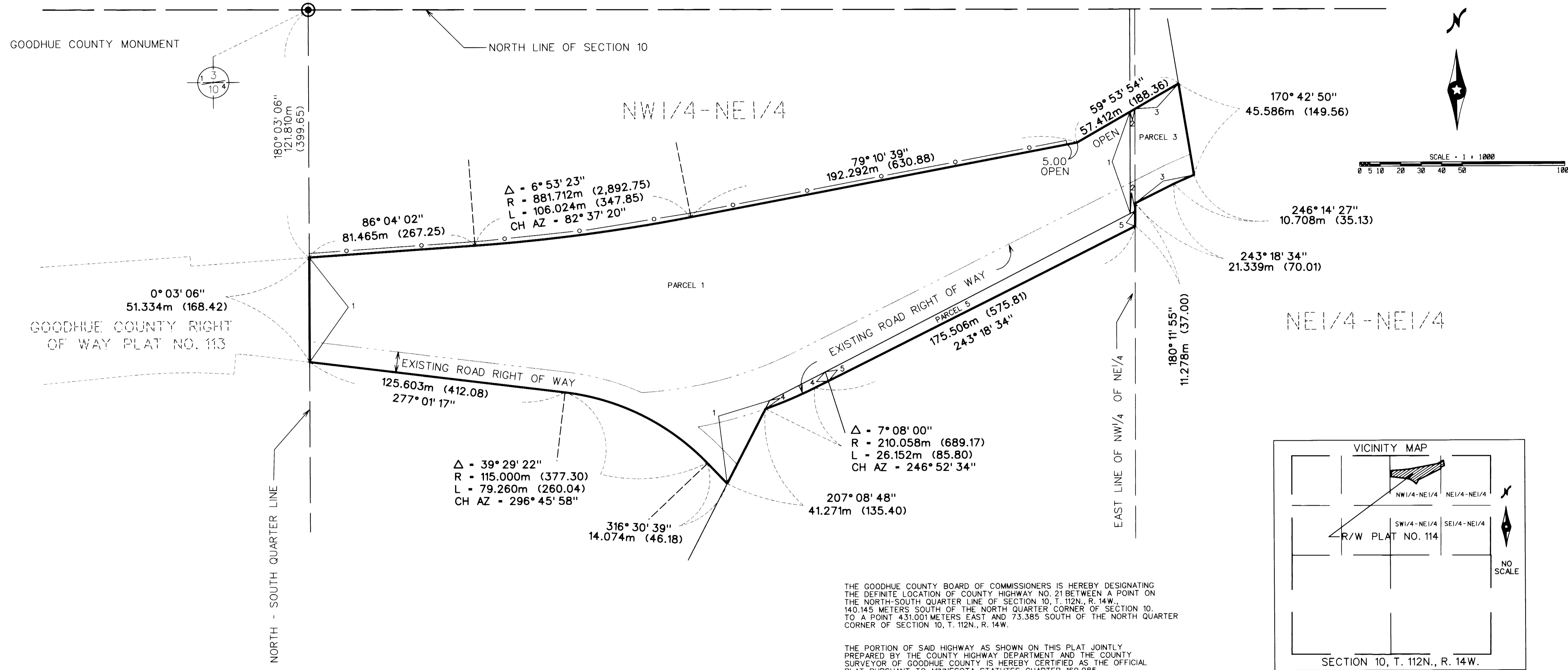


GOODHUE COUNTY RIGHT OF WAY PLAT NO. 114

County Road No. 21



THE GOODHUE COUNTY BOARD OF COMMISSIONERS IS HEREBY DESIGNATING THE DEFINITE LOCATION OF COUNTY HIGHWAY NO. 21 BETWEEN A POINT ON THE NORTH-SOUTH QUARTER LINE OF SECTION 10, T. 112N., R. 14W., 140.145 METERS SOUTH OF THE NORTH QUARTER CORNER OF SECTION 10, TO A POINT 431.001 METERS EAST AND 73.385 SOUTH OF THE NORTH QUARTER CORNER OF SECTION 10, T. 112N., R. 14W.

THE PORTION OF SAID HIGHWAY AS SHOWN ON THIS PLAT JOINTLY PREPARED BY THE COUNTY HIGHWAY DEPARTMENT AND THE COUNTY SURVEYOR OF GOODHUE COUNTY IS HEREBY CERTIFIED AS THE OFFICIAL PLAT PURSUANT TO MINNESOTA STATUTES CHAPTER 160.085

I hereby certify that this plat was prepared by me or under my direct supervision and that I am a duly Licensed Land Surveyor under the laws of the State of Minnesota, that this plat meets the requirements of Minnesota Statutes Chapter 160.085, that all measurements are correctly shown on this plat, and that the proposed right of way boundary lines are correctly designated on this plat.

Certified by *Jeffrey L. Parnis* License No. 13144
 County Surveyor

Date 6/6/97

I hereby certify that the highway location and right of way is correctly designated on this plat.

Certified by *Gregory S. Paulson* License No. 18484
 County Engineer

Date 6/6/97

AZIMUTH ORIENTATION
 This azimuth system is based on the N.A.D. 83 State Plane Coordinate System through the Goodhue County Coordinate System with North being 0 degrees 00 minutes 00 seconds and all azimuths referenced clockwise from North.

Document No. 405453

I hereby certify that this instrument was filed in the office of the County Recorder for record this 24th day of JUNE, 1997, at 8:00 o'clock A. M., and was duly recorded in the Goodhue County Records as file number 323B.

Craig A. Anderson
 Deputy
 Goodhue County Recorder

RIGHT OF WAY IN SECTION 10, T. 112N., R. 14W.							
PARCEL	OWNER	LOCATION	EXIST. HIGHWAY R/W		NEW HIGHWAY R/W		PERMANENT R/W INTEREST
			hectare	acre	hectare	acre	
1	Oreland R. Johnson and Arlene J. Johnson	NE 1/4	0.576	1.42	3.035	7.50	FEE
2	UNKNOWN	NW 1/4 NE 1/4	0.004	0.01	0.012	0.03	FEE
3	Oreland R. Johnson and Arlene J. Johnson	NE 1/4 NE 1/4	0.031	0.08	0.119	0.29	FEE
4	Kevin C. Flueger and Kimberly D. Flueger	NW 1/4 NE 1/4	0.013	0.03	0.013	0.03	FEE
5	John B. Flueger	NW 1/4 NE 1/4	0.097	0.24	0.097	0.24	FEE

