

GOODHUE COUNTY RIGHT OF WAY PLAT NO. 127

County State Aid Road No. 1

The County of Goodhue, a body politic and corporate under the laws of the State of Minnesota, pursuant to Minnesota Statutes Chapter 160.085, has caused the right of way of County State Aid Highway No. 1 to be mapped as it transgresses over and across the following described lands situated in the County of Goodhue, Minnesota, to wit:

That part of said right of way included in the following described tracts of land:

Section 36, Township 113 North, Range 15 West:
Southwest Quarter

The Board of County Commissioners for Goodhue County, Minnesota, is hereby designating the right of way of County State Aid Road No. 1 as indicated on GOODHUE COUNTY RIGHT OF WAY PLAT NO. 127.

Certified by: Greg Isakson this 13th day of June, 2000
Greg Isakson, P.E.
Goodhue County Engineer
MN License 21765

I hereby certify that this plat was prepared by me or under my direct supervision and that I am a duly Licensed Land Surveyor under the laws of the State of Minnesota, that this plat meets the requirements of Minnesota Statutes Chapter 160.085, that all measurements are correctly shown on the plat, and that the plat right of way boundary is correctly designated on this plat.

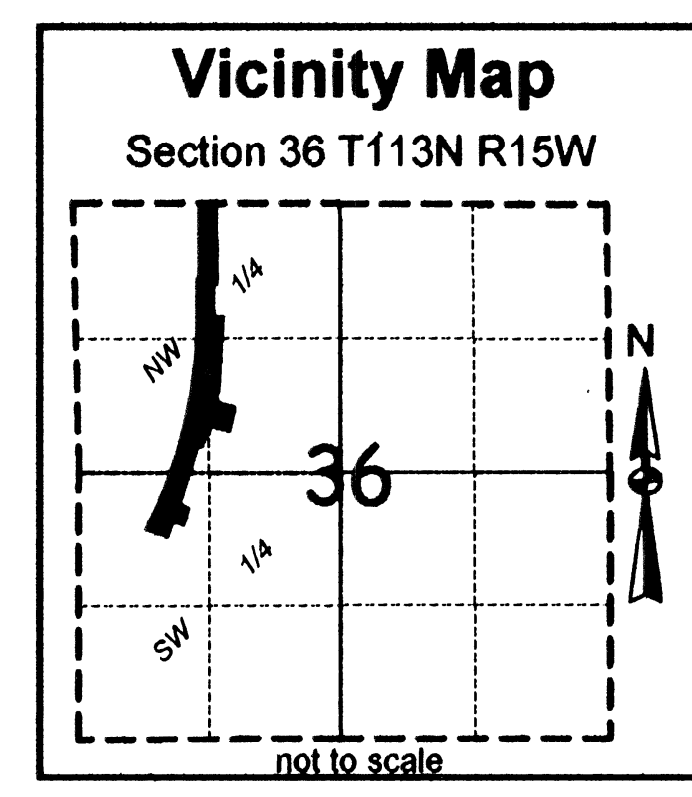
Certified by: Lisa M. Skipton this 15th day of June, 2000
Lisa M. Skipton, L.S.
Goodhue County Surveyor
MN License 23048

Document No. 141669

I hereby certify that this instrument was file in the office of the County Recorder for record this 13th day of June, 2000, at 11:50 o'clock A.m. and was duly recorded in the Goodhue County Records as file number 338B.

By: Sinda K. Tuttle by S. Hulm
Goodhue County Recorder

Right of Way in Section 36, T113N, R15W						
Parcel	Owner	Location	Existing ROW	New ROW	Total Hwy ROW in FEE Interest	Permanent Drainage Easement
1	Jeffrey L. Frost	Part of E1/2 NW1/4	0.0 ac	1.23 ac	1.23 ac	0.02 ac
2	Raymond H. Lindstrom Dorothy M. Lindstrom	Part of SW 1/4	0.0 ac	2.02 ac	2.02 ac	0.0 ac
3	Raymond H. Lindstrom Dorothy M. Lindstrom	Part of SW1/4	0.0 ac	0.08 ac	0.08 ac	0.0 ac
4	Gerald K. Aslakson Catherine H. Aslakson	Part of SW1/4	0.13 ac	0.18 ac	0.31 ac	0.0 ac
5	Aslakson's Blacktopping Service, Inc.	Part of SW1/4	0.07 ac	0.03 ac	0.10 ac	0.0 ac
6	S.B. Foot Tanning Company	Part of SW1/4	0.01 ac	0.11 ac	0.12 ac	0.0 ac
7	Raymond H. Lindstrom Dorothy M. Lindstrom	Part of SW1/4	0.01 ac	0.13 ac	0.14 ac	0.0 ac
8	Raymond H. Lindstrom Dorothy M. Lindstrom	Part of SW1/4	0.0 ac	1.18 ac	1.18 ac	0.0 ac
9	Goodhue County	Part of W1/2 NW1/4	0.0 ac	3.33 ac	3.33 ac	0.0 ac
10	Raymond H. Lindstrom Dorothy M. Lindstrom	Part of W1/2 NW1/4	0.0 ac	0.53 ac	0.53 ac	0.22 ac
11	City of Red Wing	Part of SW 1/4	0.0 ac	0.03 ac	0.03 ac	0.0 ac

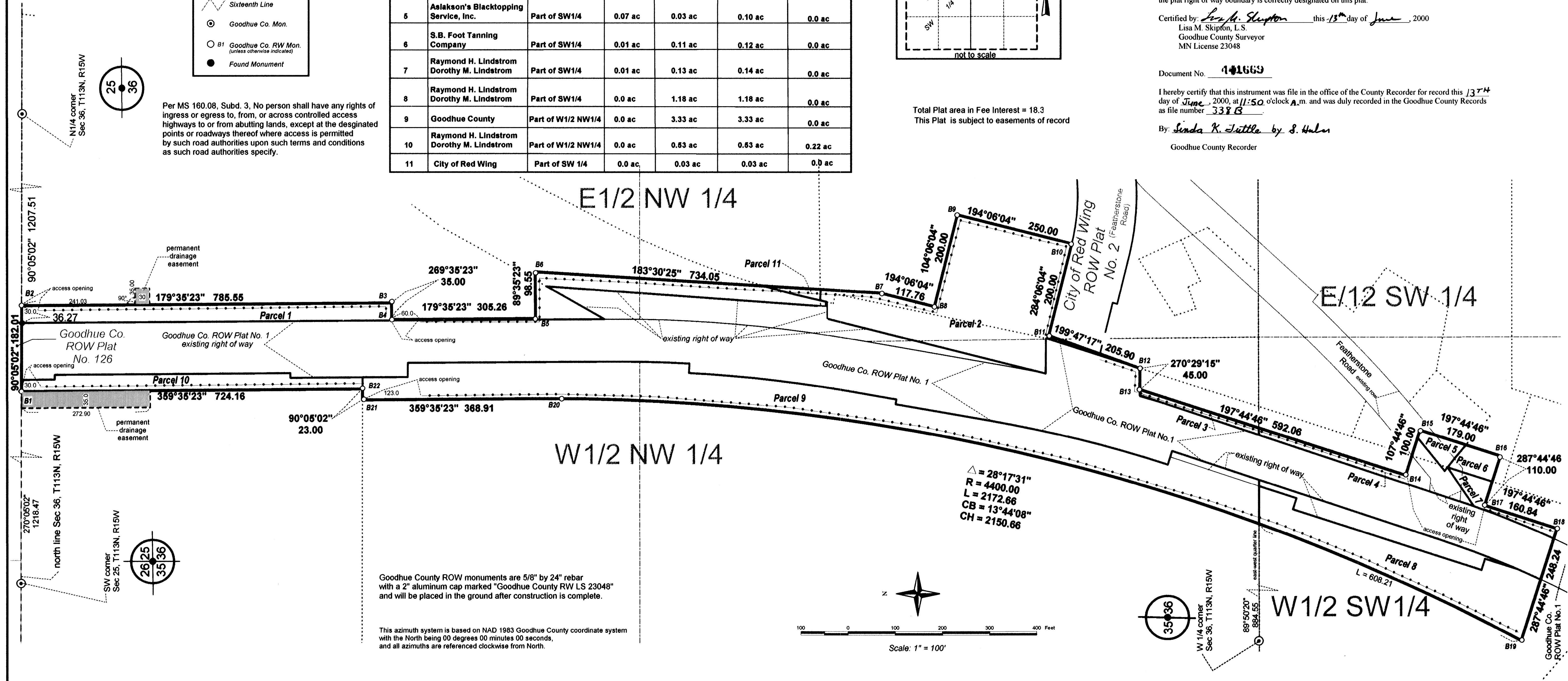


Total Plat area in Fee Interest = 18.3
This Plat is subject to easements of record

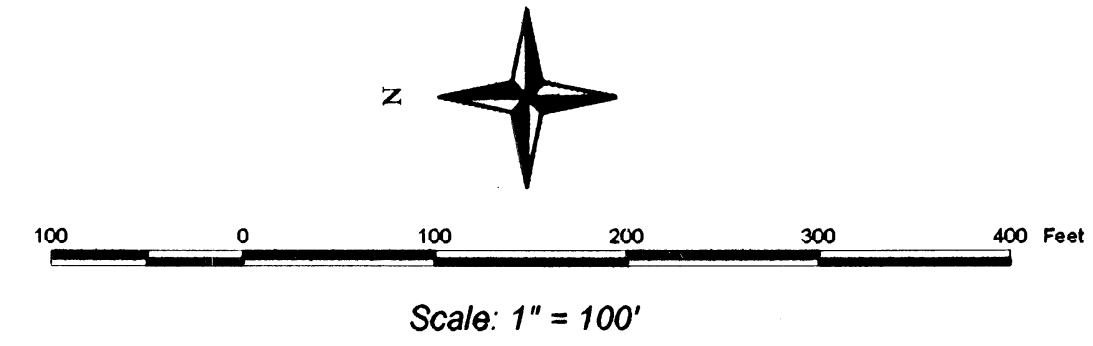
LEGEND

- Plat Boundary
- Parcel line
- Controlled Access
- Section Line
- Quarter Line
- Sixteenth Line
- Goodhue Co. Mon.
- Goodhue Co. RW Mon. (unless otherwise indicated)
- Found Monument

Per MS 160.08, Subd. 3, No person shall have any rights of ingress or egress to, from, or across controlled access highways to or from abutting lands, except at the designated points or roadways thereof where access is permitted by such road authorities upon such terms and conditions as such road authorities specify.



△ = 28°17'31"
R = 4400.00
L = 2172.66
CB = 13°44'08"
CH = 2150.66



Goodhue County ROW monuments are 5/8" by 24" rebar with a 2" aluminum cap marked "Goodhue County RW LS 23048" and will be placed in the ground after construction is complete.

This azimuth system is based on NAD 1983 Goodhue County coordinate system with the North being 00 degrees 00 minutes 00 seconds, and all azimuths are referenced clockwise from North.