

GOODHUE COUNTY RIGHT OF WAY PLAT NO. 185

County State Aid Highway No. 1

This azimuth system is based on the HARN Adjustment of NAD 1983 Goodhue County coordinate system with the North being 00 degrees 00 minutes 00 seconds, and all azimuths are referenced clockwise from north.

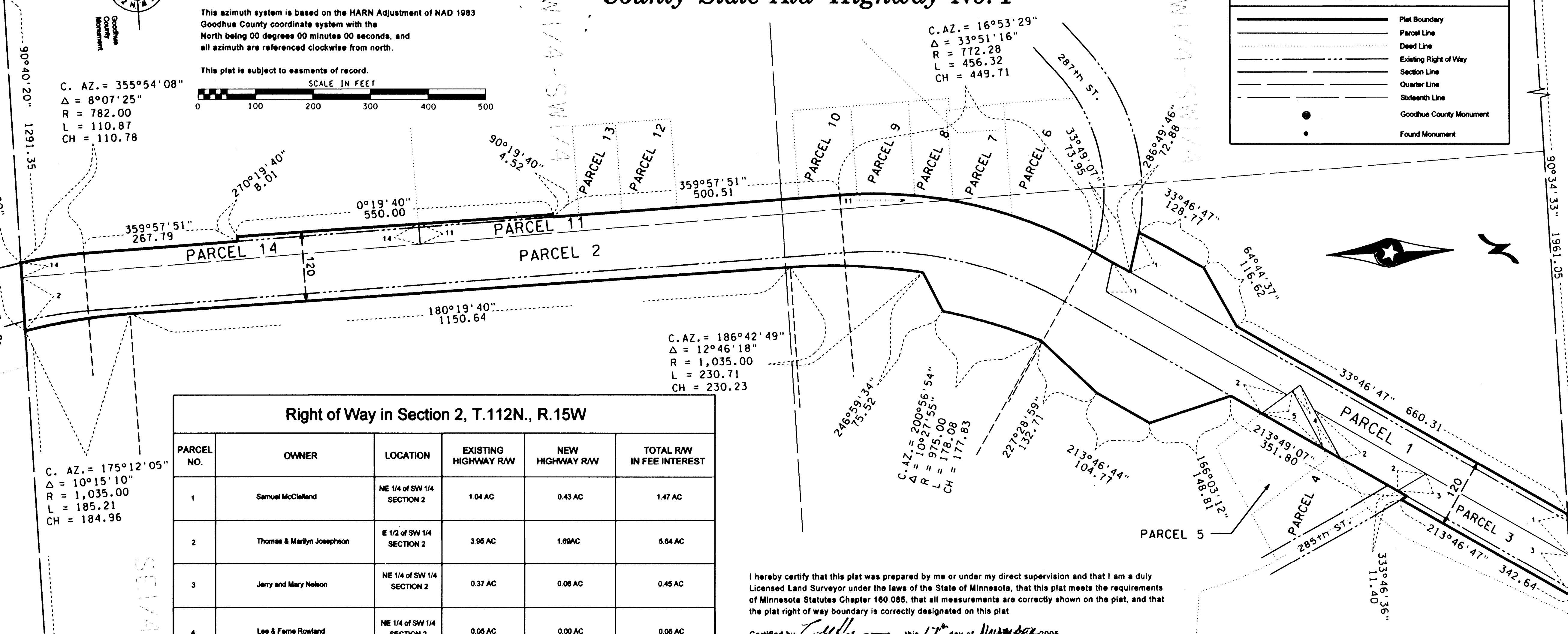
This plat is subject to easements of record.



C. AZ. = 355°54'08"
 Δ = 8°07'25"
 R = 782.00
 L = 110.87
 CH = 110.78

LEGEND

	Plat Boundary
	Parcel Line
	Deed Line
	Existing Right of Way
	Section Line
	Quarter Line
	Sixteenth Line
●	Goodhue County Monument
•	Found Monument



Right of Way in Section 2, T.112N., R.15W

PARCEL NO.	OWNER	LOCATION	EXISTING HIGHWAY R/W	NEW HIGHWAY R/W	TOTAL R/W IN FEE INTEREST
1	Samuel McClelland	NE 1/4 of SW 1/4 SECTION 2	1.04 AC	0.43 AC	1.47 AC
2	Thomas & Marilyn Josephson	E 1/2 of SW 1/4 SECTION 2	3.95 AC	1.89 AC	5.84 AC
3	Jerry and Mary Nelson	NE 1/4 of SW 1/4 SECTION 2	0.37 AC	0.08 AC	0.45 AC
4	Lee & Fern Rowland	NE 1/4 of SW 1/4 SECTION 2	0.05 AC	0.00 AC	0.05 AC
5	Lee & Fern Rowland	NE 1/4 of SW 1/4 SECTION 2	0.09 AC	0.00 AC	0.09 AC
6	Frederick Jeske	N 1/2 of SW 1/4 SECTION 2	0.00 AC	0.00 AC	0.00 AC
7	Thomas Gernitz	N 1/2 of SW 1/4 SECTION 2	0.00 AC	0.00 AC	0.00 AC
8	Thomas Gernitz	N 1/2 of SW 1/4 SECTION 2	0.00 AC	0.00 AC	0.00 AC
9	Eileen Gernitz et al	NW 1/4 of SW 1/4 SECTION 2	0.00 AC	0.00 AC	0.00 AC
10	Joy Youmans	NW 1/4 of SW 1/4 SECTION 2	0.00 AC	0.00 AC	0.00 AC
11	Robert & Jean Halverson	W 1/2 of SW 1/4 SECTION 2	0.52 AC	0.03 AC	0.55 AC
12	Janet Warren	SW 1/4 of SW 1/4 SECTION 2	0.00 AC	0.00 AC	0.00 AC
13	Janet Warren	SW 1/4 of SW 1/4 SECTION 2	0.00 AC	0.00 AC	0.00 AC
14	Ronald & Cathlene Getz	SW 1/4 of SW 1/4 SECTION 2	0.50 AC	0.05 AC	0.55 AC

I hereby certify that this plat was prepared by me or under my direct supervision and that I am a duly Licensed Land Surveyor under the laws of the State of Minnesota, that this plat meets the requirements of Minnesota Statutes Chapter 160.085, that all measurements are correctly shown on the plat, and that the plat right of way boundary is correctly designated on this plat

Certified by *[Signature]* this 17th day of November 2005

Lisa M. Hanni, L.S.
 Goodhue County Surveyor
 MN License 23048

Abstract *Torrans*
 Document No. *526675 + 20056*

I hereby certify that this instrument was filed in the office of the County Recorder for record this 23rd day of Nov., 2005, at 11:00 o'clock AM and was duly recorded in the Goodhue County Records as file number *GC-185*

By *[Signature]*

Lisa M. Hanni, L.S.
 Goodhue County Recorder

The County of Goodhue, a body politic and corporate under the laws of the State of Minnesota, pursuant to Minnesota Statutes Chapter 160.085, has caused the right of way of County State Aid Highway No. 1 to be mapped as it transgresses over and across the following described lands in the County of Goodhue, Minnesota, to wit:
 That Part of Said Right of Way included in the following described tracts of land:

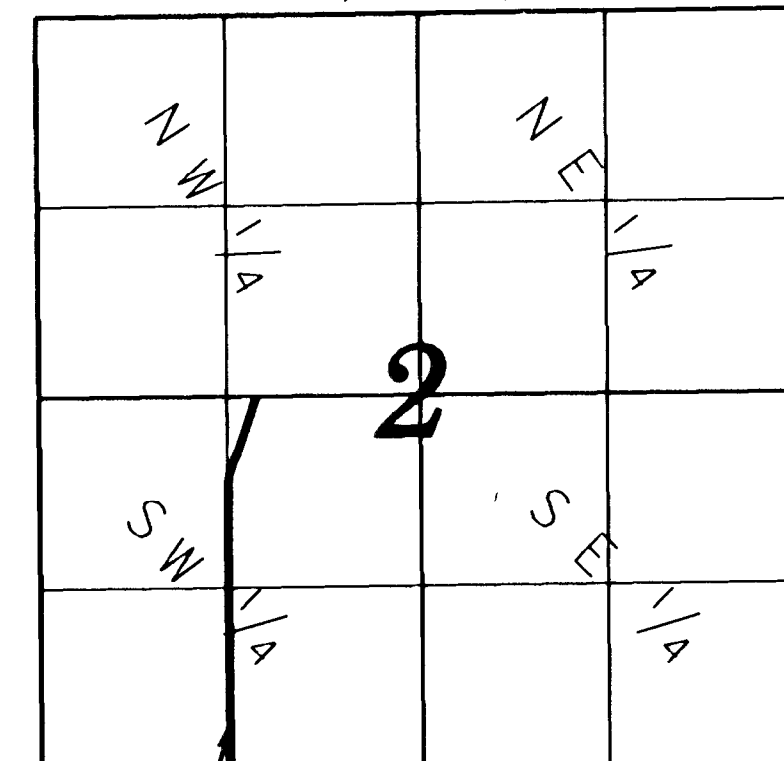
Section 2, Township 112 North, Range 15 West:
 Southwest Quarter

The Board of Commissioners for Goodhue County, Minnesota, is hereby designating the right of way of C.S.A.H. 1 as shown on GOODHUE COUNTY RIGHT OF WAY PLAT NO. 185

Certified by *[Signature]* this 22nd day of November 2005

Greg Isakson, P.E.
 Goodhue County Engineer
 MN License 21785

VICINITY MAP
 Section 2, T.112 N., R15 W



NOT TO SCALE
 PLAT NO. 185