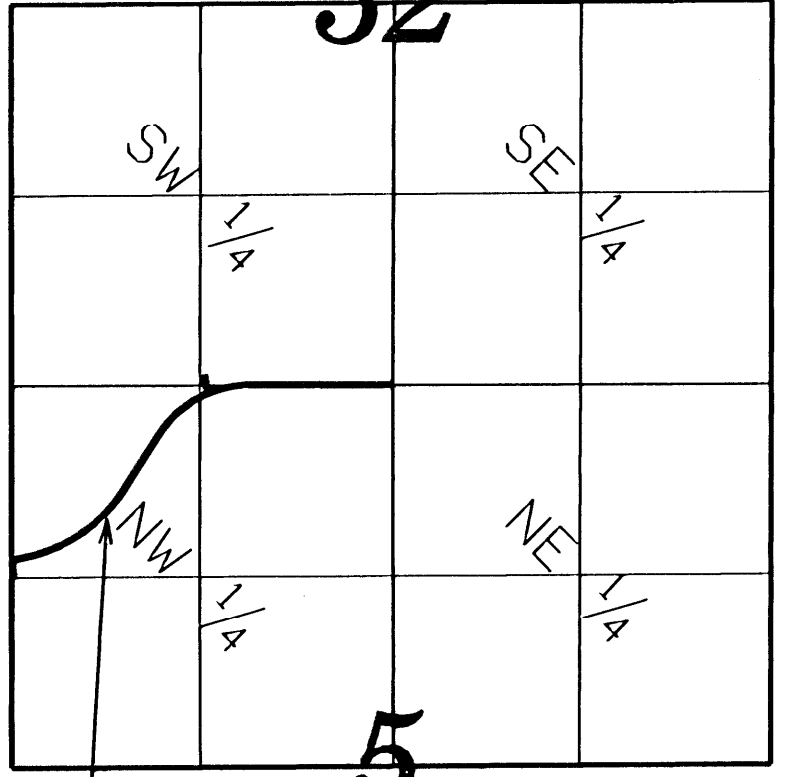


VICINITY MAP
Section 32, T112 N, R16 W



Section 5, T111 N, R16 W
NOT TO SCALE
PLAT NO. 186

I hereby certify that this plat was prepared by me or under my direct supervision and that I am a duly Licensed Land Surveyor under the laws of the State of Minnesota, that this plat meets the requirements of Minnesota Statutes Chapter 160.085, that all measurements are correctly shown on the plat, and that the plat right of way boundary is correctly designated on this plat

Certified by *[Signature]* this 21 day of December, 2008

Lisa M. Hannl, L.S.
Goodhue County Surveyor
MN License 23048

Document No. 540470

I hereby certify that this instrument was filed in the office of the County Recorder for record this 27th day of December 2008, at 8:00 o'clock AM and was duly recorded in the Goodhue County Records as file number GC-186

By *[Signature]*
Lisa M Hannl, L.S.
Goodhue County Recorder

GOODHUE COUNTY RIGHT OF WAY PLAT NO. 186

County State Aid Highway No. 1

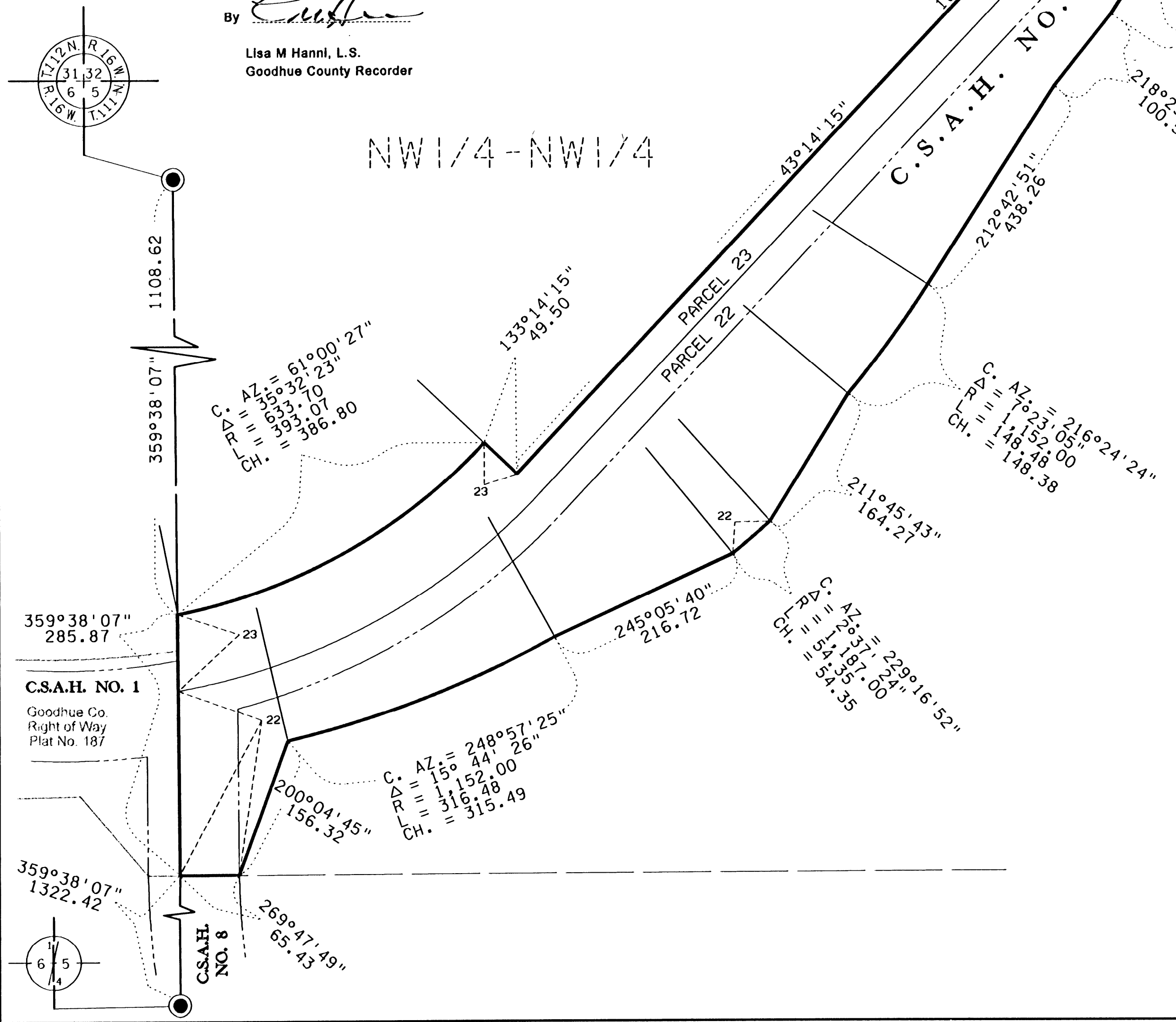
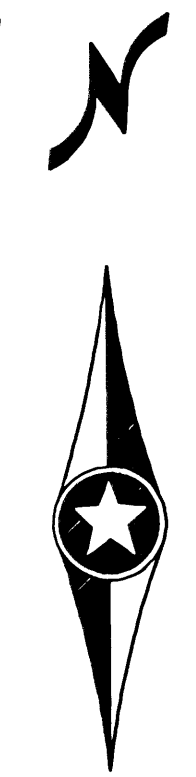
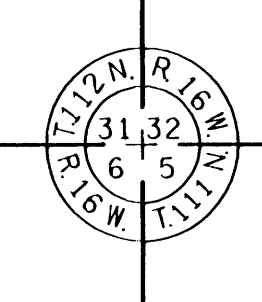
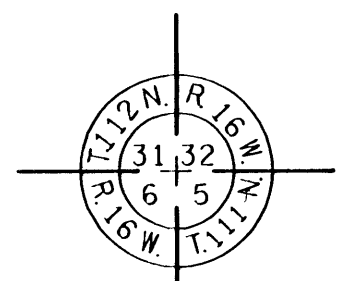
The County of Goodhue, a body politic and corporate under the laws of the State of Minnesota, pursuant to Minnesota Statutes Chapter 160.085, has caused the right of way of County State Aid Highway No. 1 to be mapped as it transgresses over and across the following described lands in the County of Goodhue, Minnesota, to wit:
That Part of Said Right of Way included in the following described tracts of land:

Section 32, Township 112 North, Range 16 West:
South Half of the Southwest Quarter
Section 5, Township 111 North, Range 16 West:
North Half of the Northwest Quarter

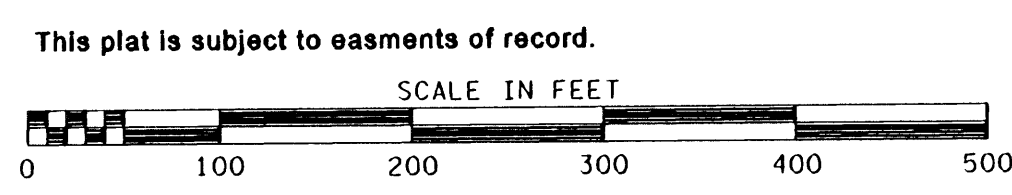
The Board of Commissioners for Goodhue County, Minnesota, is hereby designating the right of way of C.S.A.H. 1 as shown on GOODHUE COUNTY RIGHT OF WAY PLAT NO. 186

Certified by *[Signature]* this 14th day of Dec, 2008

Greg Isakson, P.E.
Goodhue County Engineer
MN License 21785



This azimuth system is based on the HARN Adjustment of NAD 1983 Goodhue County coordinate system with the North being 00 degrees 00 minutes 00 seconds, and all azimuth are referenced clockwise from north.



LEGEND	
	Plat Boundary
	Parcel Line
	Deed Line
	Existing Right of Way
	Section Line
	Quarter Line
	Sixteenth Line
	Goodhue County Monument
	Found Monument

PARCEL NO.	OWNER	LOCATION	EXISTING HIGHWAY R/W	NEW HIGHWAY R/W	TOTAL R/W IN FEE INTEREST
21	Patrick & Jodie Girgen	NW 1/4 SECTION 5	0.98 AC	0.02 AC	1.00 AC
22	Steven & Linnae Carlson	NW 1/4 OF NW 1/4 SECTION 5	1.84 AC	3.51 AC	5.15 AC
23	Dustin & Jennifer Hensley	NW 1/4 OF NW 1/4 SECTION 5	1.83 AC	0.00 AC	1.83 AC
24	LeRoy & Carol Dahling	NE 1/4 OF NW 1/4 SECTION 5	0.07 AC	0.00 AC	0.07 AC
25	LeRoy & Carol Dahling	NE 1/4 OF NW 1/4 SECTION 5	0.04 AC	0.00 AC	0.04 AC
28	Stephen & Catherine Butler	NE 1/4 OF NW 1/4 SECTION 5	0.04 AC	0.00 AC	0.04 AC
27	Goodhue County	NE 1/4 OF NW 1/4 SECTION 5	1.09 AC	0.00 AC	1.09 AC

PARCEL NO.	OWNER	LOCATION	EXISTING HIGHWAY R/W	NEW HIGHWAY R/W	TOTAL R/W IN FEE INTEREST
1	Goodhue County	SE 1/4 OF SW 1/4 SECTION 32	0.21 AC	0.00 AC	0.21 AC
2	Edwin Sorenson, Roberta Gaardner, James Johnson, Linda Johnson, David Sorenson	SE 1/4 OF SW 1/4 SECTION 32	0.07 AC	0.00 AC	0.07 AC
3	Edwin Sorenson	SE 1/4 OF SW 1/4 SECTION 32	0.06 AC	0.00 AC	0.06 AC
4	Goodhue County	SE 1/4 OF SW 1/4 SECTION 32	0.16 AC	0.00 AC	0.16 AC
5	Goodhue County	SE 1/4 OF SW 1/4 SECTION 32	0.14 AC	0.00 AC	0.14 AC
6	Sleepy Eye Telephone Co.	SE 1/4 OF SW 1/4 SECTION 32	0.08 AC	0.00 AC	0.08 AC
7	Goodhue County	SE 1/4 OF SW 1/4 SECTION 32	0.06 AC	0.00 AC	0.06 AC
8	John & Constance Hertzfeld	SE 1/4 OF SW 1/4 SECTION 32	0.04 AC	0.00 AC	0.04 AC
9	Dustin Lindahl	SE 1/4 OF SW 1/4 SECTION 32	0.07 AC	0.00 AC	0.07 AC
10	Unknown	SE 1/4 OF SW 1/4 SECTION 32	33 SQ FT	0.00 AC	33 SQ FT
11	Dwight & Mavis Rolnke	SE 1/4 OF SW 1/4 SECTION 32	0.04 AC	0.00 AC	0.04 AC
12	White Rock Bank	SE 1/4 OF SW 1/4 SECTION 32	0.02 AC	0.00 AC	0.02 AC
13	White Rock Bank	SE 1/4 OF SW 1/4 SECTION 32	0.04 AC	0.00 AC	0.04 AC
14	Unknown	SE 1/4 OF SW 1/4 SECTION 32	78 SQ FT	0.00 AC	78 SQ FT
15	White Rock Bank	SE 1/4 OF SW 1/4 SECTION 32	0.07 AC	0.00 AC	0.07 AC
16	Jason Lindahl	SE 1/4 OF SW 1/4 SECTION 32	0.09 AC	0.00 AC	0.09 AC
17	Tim & Heidi Meyers	SE 1/4 OF SW 1/4 SECTION 32	0.04 AC	0.06 AC	0.10 AC
18	Goodhue County	SE 1/4 OF SW 1/4 SECTION 32	0.16 AC	0.00 AC	0.16 AC
19	Conrad A Rapp & Joyce Rapp	SW 1/4 OF SW 1/4 SECTION 32	0.01 AC	0.01 AC	0.02 AC
20	Jon Lindgren	SW 1/4 OF SW 1/4 SECTION 32	0.02 AC	0.02 AC	0.04 AC