

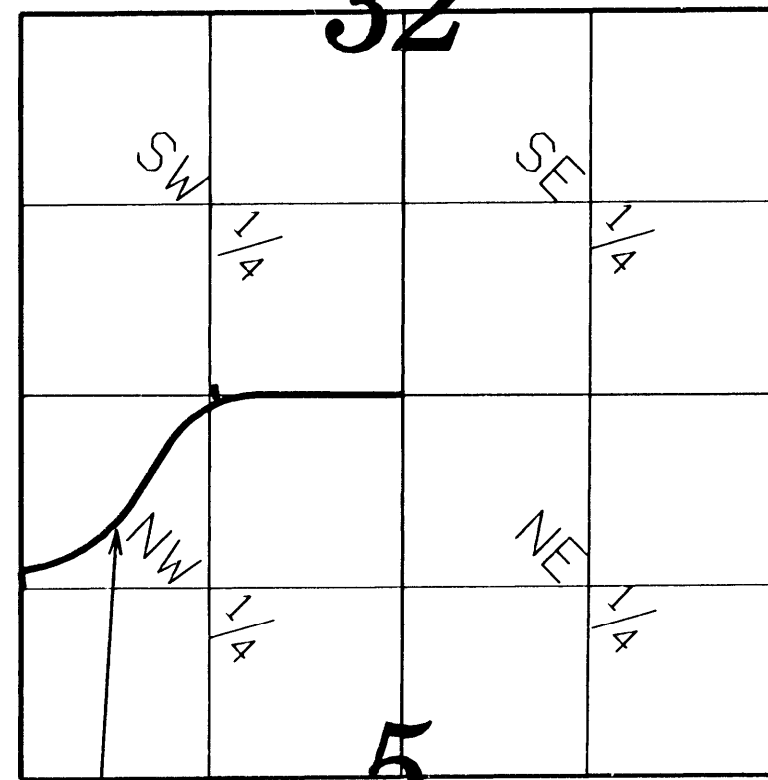
# GOODHUE COUNTY RIGHT OF WAY PLAT NO. 186A

## County State Aid Highway No. 1

THIS MAP AMENDS PARCEL 17 OF GOODHUE COUNTY RIGHT OF WAY PLAT NO. 186

### VICINITY MAP

Section 32, T112 N, R16 W



Section 5, T111 N, R16 W

NOT TO SCALE  
PLAT NO. 186

The County of Goodhue, a body politic and corporate under the laws of the State of Minnesota, pursuant to Minnesota Statutes Chapter 160.085, has caused the right of way of County State Aid Highway No. 1 to be mapped as it transgresses over and across the following described lands in the County of Goodhue, Minnesota, to wit:  
That Part of Said Right of Way included in the following described tracts of land:

Section 32, Township 112 North, Range 16 West:  
South Half of the Southwest Quarter  
Section 5, Township 111 North, Range 16 West:  
North Half of the Northwest Quarter

The Board of Commissioners for Goodhue County, Minnesota, is hereby designating the right of way of C.S.A.H. 1 as shown on GOODHUE COUNTY RIGHT OF WAY PLAT NO. 186A

Certified by *Greg Isakson* this 22 day of April, 2007

Greg Isakson, P.E.  
Goodhue County Engineer  
MN License 21765

I hereby certify that this plat was prepared by me or under my direct supervision and that I am a duly Licensed Land Surveyor under the laws of the State of Minnesota, that this plat meets the requirements of Minnesota Statutes Chapter 160.085, that all measurements are correctly shown on the plat, and that the plat right of way boundary is correctly designated on this plat

Certified by *Lisa M. Hanni* this 13<sup>TH</sup> day of April, 2007

Lisa M. Hanni, L.S.  
Goodhue County Surveyor  
MN License 23048

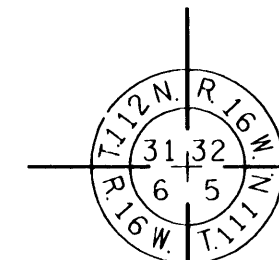
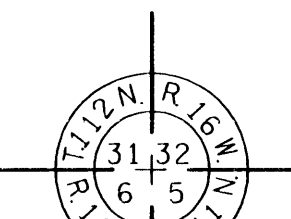
Document No. 543771

I hereby certify that this instrument was filed in the office of the County Recorder for record this 13<sup>TH</sup> day of April, 2007, at 1:00 o'clock Pm and was duly recorded in the Goodhue County Records as file number GC-186

By *Lisa M. Hanni*

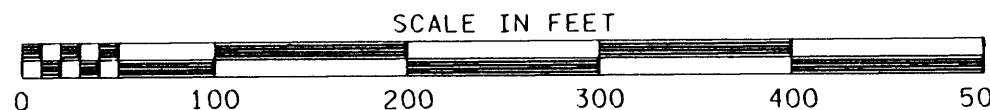
Lisa M. Hanni, L.S.  
Goodhue County Recorder

See Certificate of Correction recorded on 8-27-2010 as Doc. No. 578647



This azimuth system is based on the HARN Adjustment of NAD 1983 Goodhue County coordinate system with the North being 00 degrees 00 minutes 00 seconds, and all azimuth are referenced clockwise from north.

This plat is subject to easements of record.



LEGEND	
	Plat Boundary
	Parcel Line
	Deed Line
	Existing Right of Way
	Section Line
	Quarter Line
	Sixteenth Line
	Goodhue County Monument
	Found Monument

PARCEL NO.	OWNER	LOCATION	EXISTING HIGHWAY R/W	NEW HIGHWAY R/W	TOTAL R/W IN FEE INTEREST
21	Patrick & Jodie Gilgen	NW 1/4 SECTION 5	0.98 AC	0.02 AC	1.00 AC
22	Steven & Linnae Carlson	NW 1/4 OF NW 1/4 SECTION 5	1.84 AC	3.51 AC	5.15 AC
23	Dustin & Jennifer Hensley	NW 1/4 OF NW 1/4 SECTION 5	1.83 AC	0.00 AC	1.83 AC
24	LeRoy & Carol Dahling	NE 1/4 OF NW 1/4 SECTION 5	0.07 AC	0.00 AC	0.07 AC
25	LeRoy & Carol Dahling	NE 1/4 OF NW 1/4 SECTION 5	0.04 AC	0.00 AC	0.04 AC
26	Stephen & Catherine Butler	NE 1/4 OF NW 1/4 SECTION 5	0.04 AC	0.00 AC	0.04 AC
27	Goodhue County	NE 1/4 OF NW 1/4 SECTION 5	1.09 AC	0.00 AC	1.09 AC

PARCEL NO.	OWNER	LOCATION	EXISTING HIGHWAY R/W	NEW HIGHWAY R/W	TOTAL R/W IN FEE INTEREST
1	Goodhue County	SE 1/4 OF SW 1/4 SECTION 32	0.21 AC	0.00 AC	0.21 AC
2	Edwin Sorenson, Roberta Gaardner, James Johnson, Linda Johnson, David Sorenson	SE 1/4 OF SW 1/4 SECTION 32	0.07 AC	0.00 AC	0.07 AC
3	Edwin Sorenson	SE 1/4 OF SW 1/4 SECTION 32	0.05 AC	0.00 AC	0.05 AC
4	Goodhue County	SE 1/4 OF SW 1/4 SECTION 32	0.18 AC	0.00 AC	0.18 AC
5	Goodhue County	SE 1/4 OF SW 1/4 SECTION 32	0.14 AC	0.00 AC	0.14 AC
6	Sleep/Eye Telephone Co.	SE 1/4 OF SW 1/4 SECTION 32	0.08 AC	0.00 AC	0.08 AC
7	Goodhue County	SE 1/4 OF SW 1/4 SECTION 32	0.06 AC	0.00 AC	0.06 AC
8	John & Constance Hertzfeld	SE 1/4 OF SW 1/4 SECTION 32	0.04 AC	0.00 AC	0.04 AC
9	Dustin Lindahl	SE 1/4 OF SW 1/4 SECTION 32	0.07 AC	0.00 AC	0.07 AC
10	Unknown	SE 1/4 OF SW 1/4 SECTION 32	33 SQ FT	0.00 AC	33 SQ FT
11	Dwight & Mavis Reinke	SE 1/4 OF SW 1/4 SECTION 32	0.04 AC	0.00 AC	0.04 AC
12	White Rock Bank	SE 1/4 OF SW 1/4 SECTION 32	0.02 AC	0.00 AC	0.02 AC
13	White Rock Bank	SE 1/4 OF SW 1/4 SECTION 32	0.04 AC	0.00 AC	0.04 AC
14	Unknown	SE 1/4 OF SW 1/4 SECTION 32	78 SQ FT	0.00 AC	78 SQ FT
15	White Rock Bank	SE 1/4 OF SW 1/4 SECTION 32	0.07 AC	0.00 AC	0.07 AC
16	Jason Lindahl	SE 1/4 OF SW 1/4 SECTION 32	0.09 AC	0.00 AC	0.09 AC
17	Tim & Heidi Meyers	SE 1/4 OF SW 1/4 SECTION 32	0.04 AC	0.01 AC	0.05 AC
18	Goodhue County	SE 1/4 OF SW 1/4 SECTION 32	0.18 AC	0.00 AC	0.18 AC
19	Conrad A Rapp & Joyce Rapp	SW 1/4 OF SW 1/4 SECTION 32	0.01 AC	0.01 AC	0.02 AC
20	Joni Lindgren	SW 1/4 OF SW 1/4 SECTION 32	0.02 AC	0.02 AC	0.04 AC