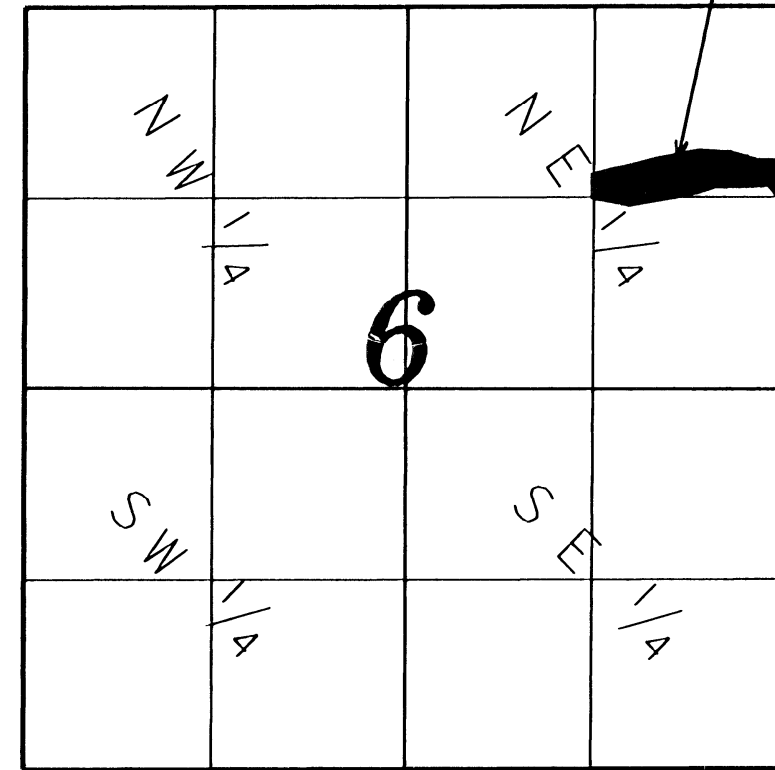


# GOODHUE COUNTY RIGHT OF WAY PLAT NO. 187

## County State Aid Highway No. 1

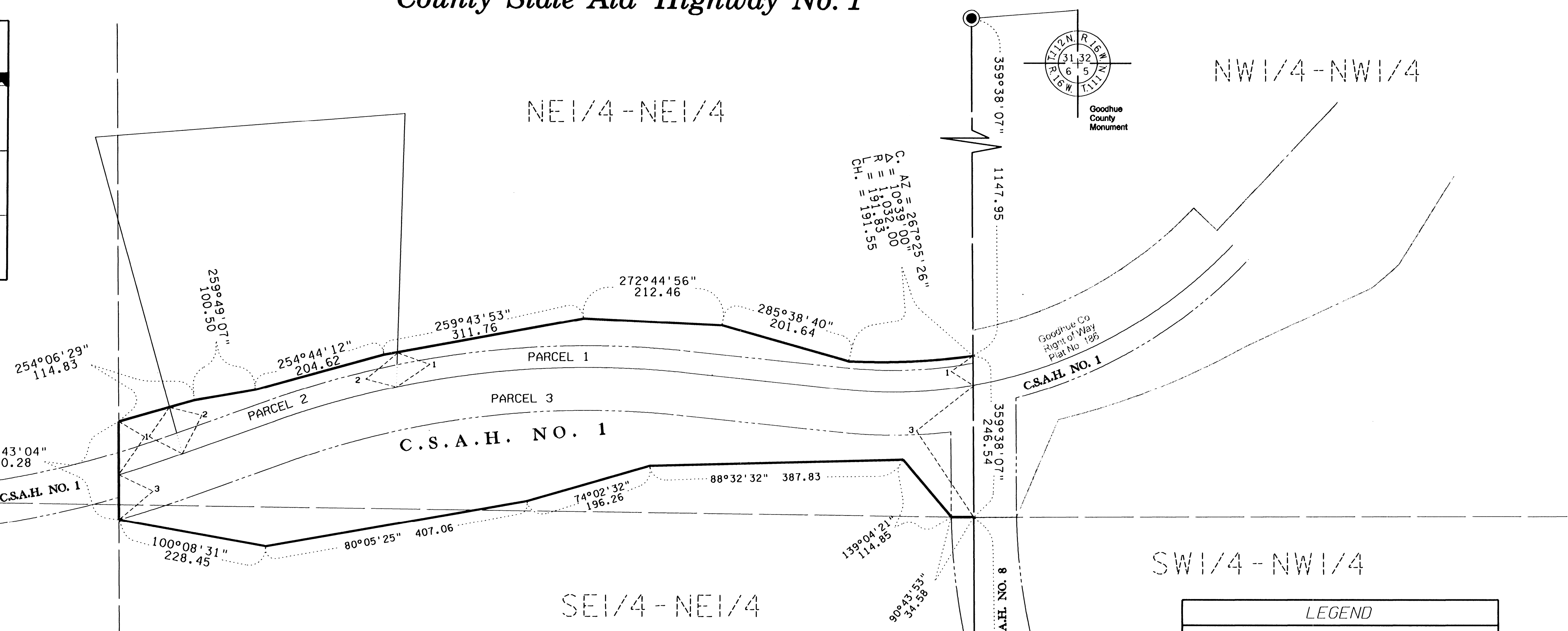
PLAT NO. 187  
VICINITY MAP  
Section 6, T 111 N, R 16 W



NOT TO SCALE

NW 1/4 - NE 1/4

SW 1/4 - NE 1/4



The County of Goodhue, a body politic and corporate under the laws of the State of Minnesota, pursuant to Minnesota Statutes Chapter 160.085, has caused the right of way of County State Aid Highway No. 1 to be mapped as it transgresses over and across the following described lands in the County of Goodhue, Minnesota, to wit:

That Part of Said Right of Way included in the following described tracts of land:

Section 6, Township 111 North, Range 16 West:  
East Half of the Northeast Quarter

The Board of Commissioners for Goodhue County, Minnesota, is hereby designating the right of way of C.S.A.H. 1 as shown on GOODHUE COUNTY RIGHT OF WAY PLAT NO. 187

Certified by *Greg Isakson* this *14<sup>th</sup>* day of *Dec*, 2006

Greg Isakson, P.E.  
Goodhue County Engineer  
MN License 21765

I hereby certify that this plat was prepared by me or under my direct supervision and that I am a duly Licensed Land Surveyor under the laws of the State of Minnesota, that this plat meets the requirements of Minnesota Statutes Chapter 160.085, that all measurements are correctly shown on the plat, and that the plat right of way boundary is correctly designated on this plat.

Certified by *Lisa M. Hanni* this *21<sup>st</sup>* day of *December*, 2006

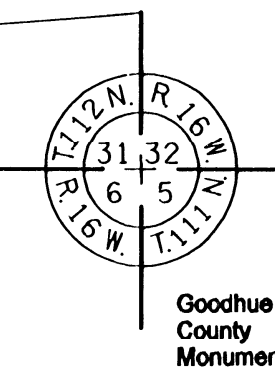
Lisa M. Hanni, L.S.  
Goodhue County Surveyor  
MN License 23048

Document No. *540471*

I hereby certify that this instrument was filed in the office of the County Recorder for record this *27<sup>th</sup>* day of *December*, 2006, at *8:00* o'clock *A*m and was duly recorded in the Goodhue County Records as file number *CS 187*

By *Lisa M. Hanni*

Lisa M. Hanni, L.S.  
Goodhue County Recorder



NW 1/4 - NW 1/4

Goodhue Co  
Right of Way  
Plat No. 187

C.S.A.H. NO. 1

SW 1/4 - NW 1/4

SE 1/4 - NE 1/4

LEGEND	
	Plat Boundary
	Parcel Line
	Deed Line
	Existing Right of Way
	Section Line
	Quarter Line
	Sixteenth Line
	Goodhue County Monument
	Found Monument

This azimuth system is based on the HARN Adjustment of NAD 1983 Goodhue County coordinate system with the North being 00 degrees 00 minutes 00 seconds, and all azimuth are referenced clockwise from north.

This plat is subject to easments of record.

SCALE IN FEET



Right of Way in Section 6, T 111N, R 16W					
PARCEL NO.	OWNER	LOCATION	EXISTING HIGHWAY RAW	NEW HIGHWAY RAW	TOTAL RAW IN FEE INTEREST
1	Rebecca Powell	NE 1/4 OF NE 1/4 SECTION 6	0.27 AC	0.07 AC	0.34 AC
2	James Josephson	NE 1/4 OF NE 1/4 SECTION 6	4.79 AC	1.07 AC	5.86 AC
3	Gorden & Nancy Mills	E 1/2 OF NE 1/4 SECTION 6	1.36 AC	0.17 AC	1.52 AC

