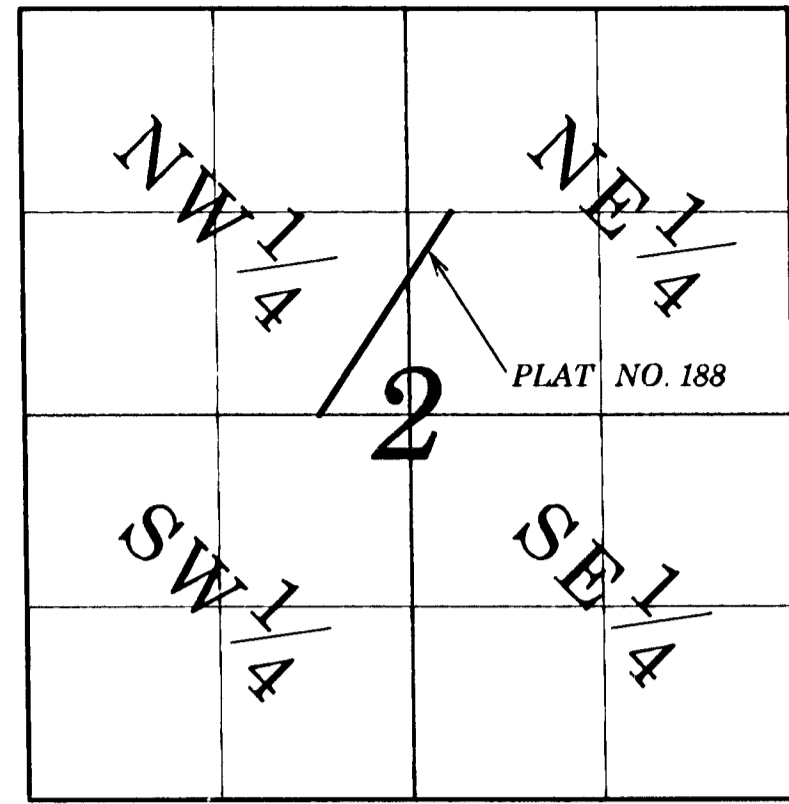


# GOODHUE COUNTY RIGHT OF WAY PLAT NO. 188

## County State Aid Highway No. 1

**VICINITY MAP**

Section 2, T.112 N, R15 W



NOT TO SCALE

**LEGEND**

- Plat Boundary
- Parcel Line
- Existing Right of Way
- Section Line
- Quarter Line
- Sixteenth Line
- Controlled Assess
- Goodhue County Monument

This azimuth system is based on the HARN Adjustment of NAD 1983 Goodhue County coordinate system with the North being 00 degrees 00 minutes 00 seconds, and all azimuths are referenced clockwise from north.

This plat is subject to easements of record.



The County of Goodhue, a body politic and corporate under the laws of the State of Minnesota, pursuant to Minnesota Statutes Chapter 180.085, has caused the right of way of County State Aid Highway No. 1 to be mapped as it transgresses over and across the following described lands in the County of Goodhue, Minnesota, to wit:  
That Part of Said Right of Way included in the following described tracts of land:

Section 2, Township 112 North, Range 15 West:  
South East Quarter of the North West Quarter and the South West Quarter of the North East Quarter

The Board of Commissioners for Goodhue County, Minnesota, is hereby designating the right of way of C.S.A.H. 1 as shown on GOODHUE COUNTY RIGHT OF WAY PLAT NO. 188

Certified by *Greg Isakson* this 07 day of October, 2008

Greg Isakson, P.E.  
Goodhue County Engineer  
MN License 21785

I hereby certify that this plat was prepared by me or under my direct supervision and that I am a duly Licensed Land Surveyor under the laws of the State of Minnesota, that this plat meets the requirements of Minnesota Statutes Chapter 180.085, that all measurements are correctly shown on the plat, and that the plat right of way boundary is correctly designated on this plat

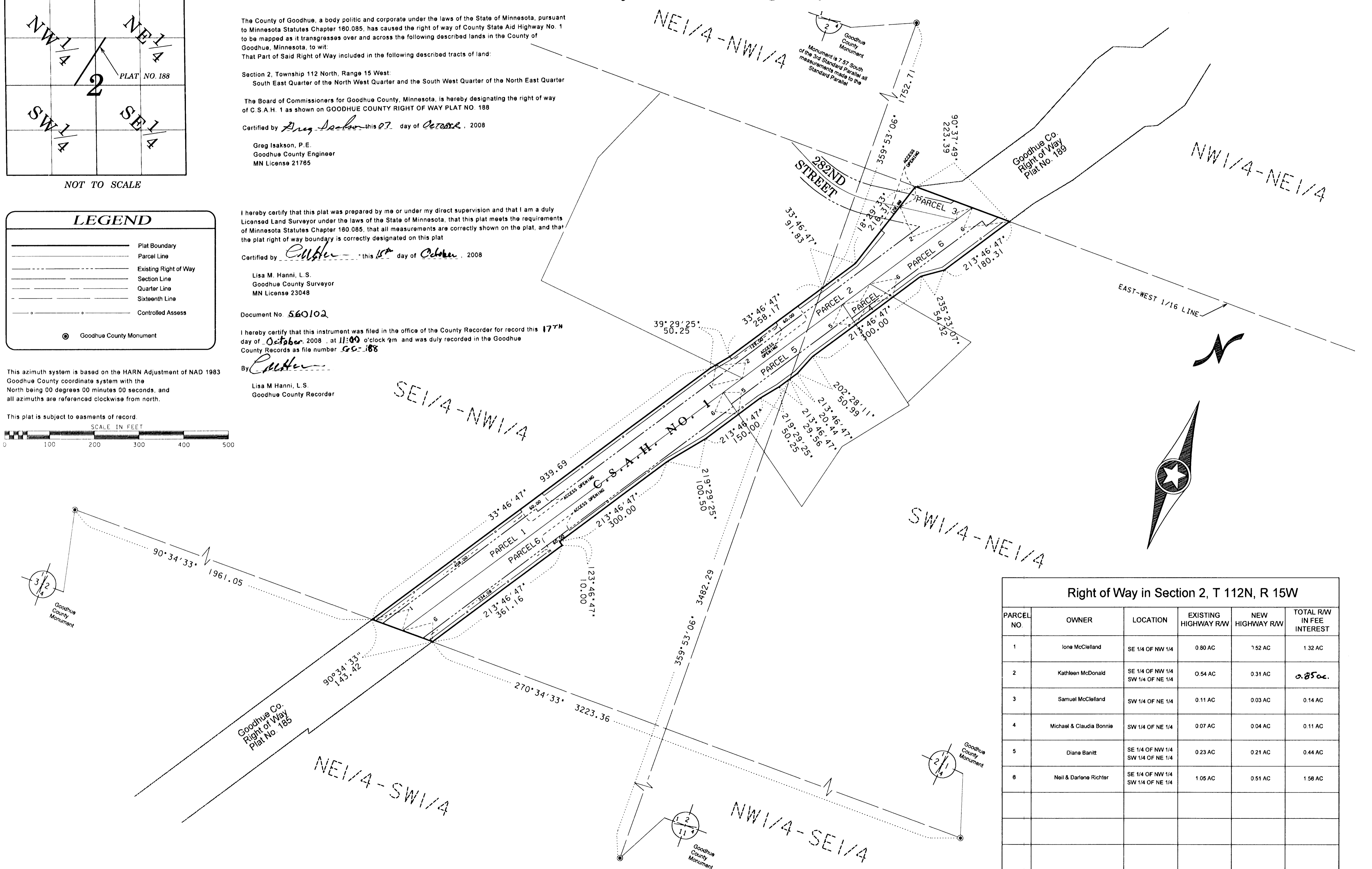
Certified by *Lisa M. Hanni* this 15 day of October, 2008

Lisa M. Hanni, L.S.  
Goodhue County Surveyor  
MN License 23048

Document No. 560102

I hereby certify that this instrument was filed in the office of the County Recorder for record this 17 day of October, 2008, at 11:00 o'clock am and was duly recorded in the Goodhue County Records as file number GC-188

By *Lisa M. Hanni*  
Lisa M. Hanni, L.S.  
Goodhue County Recorder



Right of Way in Section 2, T 112N, R 15W

PARCEL NO.	OWNER	LOCATION	EXISTING HIGHWAY R/W	NEW HIGHWAY R/W	TOTAL R/W IN FEE INTEREST
1	Ione McClelland	SE 1/4 OF NW 1/4	0.80 AC	1.52 AC	1.32 AC
2	Kathleen McDonald	SE 1/4 OF NW 1/4 SW 1/4 OF NE 1/4	0.54 AC	0.31 AC	0.85 ac.
3	Samuel McClelland	SW 1/4 OF NE 1/4	0.11 AC	0.03 AC	0.14 AC
4	Michael & Claudia Bonnie	SW 1/4 OF NE 1/4	0.07 AC	0.04 AC	0.11 AC
5	Diane Banitt	SE 1/4 OF NW 1/4 SW 1/4 OF NE 1/4	0.23 AC	0.21 AC	0.44 AC
8	Neil & Darlene Richter	SE 1/4 OF NW 1/4 SW 1/4 OF NE 1/4	1.05 AC	0.51 AC	1.58 AC