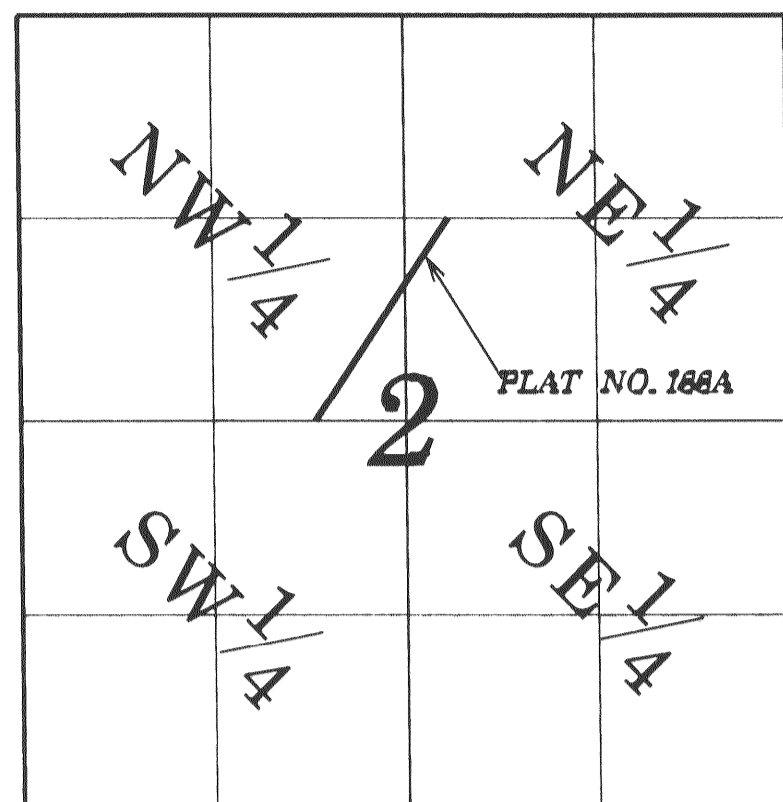


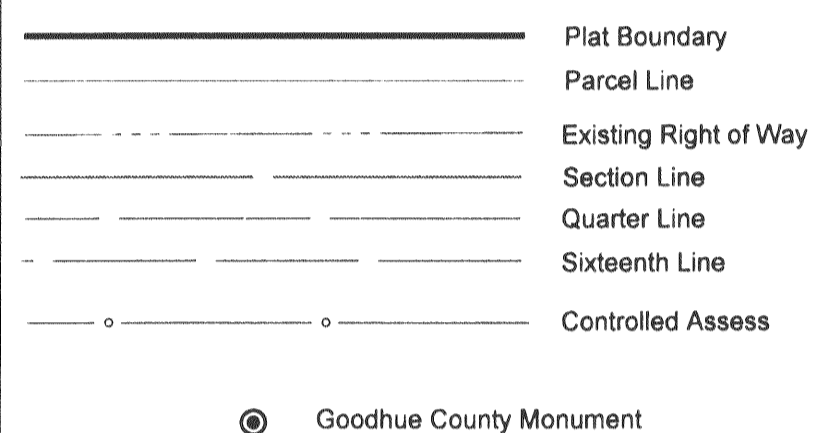
VICINITY MAP

Section 2, T.112 N, R15 W

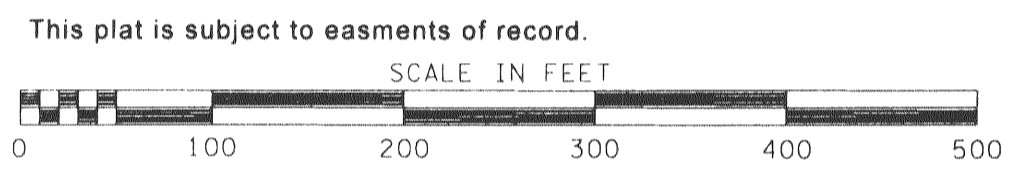


NOT TO SCALE

LEGEND



This azimuth system is based on the HARN Adjustment of NAD 1983 Goodhue County coordinate system with the North being 00 degrees 00 minutes 00 seconds, and all azimuths are referenced clockwise from north.



# GOODHUE COUNTY RIGHT OF WAY PLAT NO. 188A

## County State Aid Highway No. 1

### AMENDMENT TO GOODHUE COUNTY RIGHT OF WAY PLAT NO. 188 (PARCEL 1)

The County of Goodhue, a body politic and corporate under the laws of the State of Minnesota, pursuant to Minnesota Statutes Chapter 160.085, has caused the right of way of County State Aid Highway No. 1 to be mapped as it transgresses over and across the following described lands in the County of Goodhue, Minnesota, to wit:  
That Part of Said Right of Way included in the following described tracts of land:

Section 2, Township 112 North, Range 15 West:  
Southeast Quarter of the Northwest Quarter and the Southwest Quarter of the Northeast Quarter

The Board of Commissioners for Goodhue County, Minnesota, is hereby designating the right of way of C.S.A.H. 1 as shown on GOODHUE COUNTY RIGHT OF WAY PLAT NO. 188A

Certified by *Greg Isakson* this 27<sup>th</sup> day of June, 2009

Greg Isakson, P.E.  
Goodhue County Engineer  
MN License 21765

I hereby certify that this plat was prepared by me or under my direct supervision and that I am a duly Licensed Land Surveyor under the laws of the State of Minnesota, that this plat meets the requirements of Minnesota Statutes Chapter 160.085, that all measurements are correctly shown on the plat, and that the plat right of way boundary is correctly designated on this plat

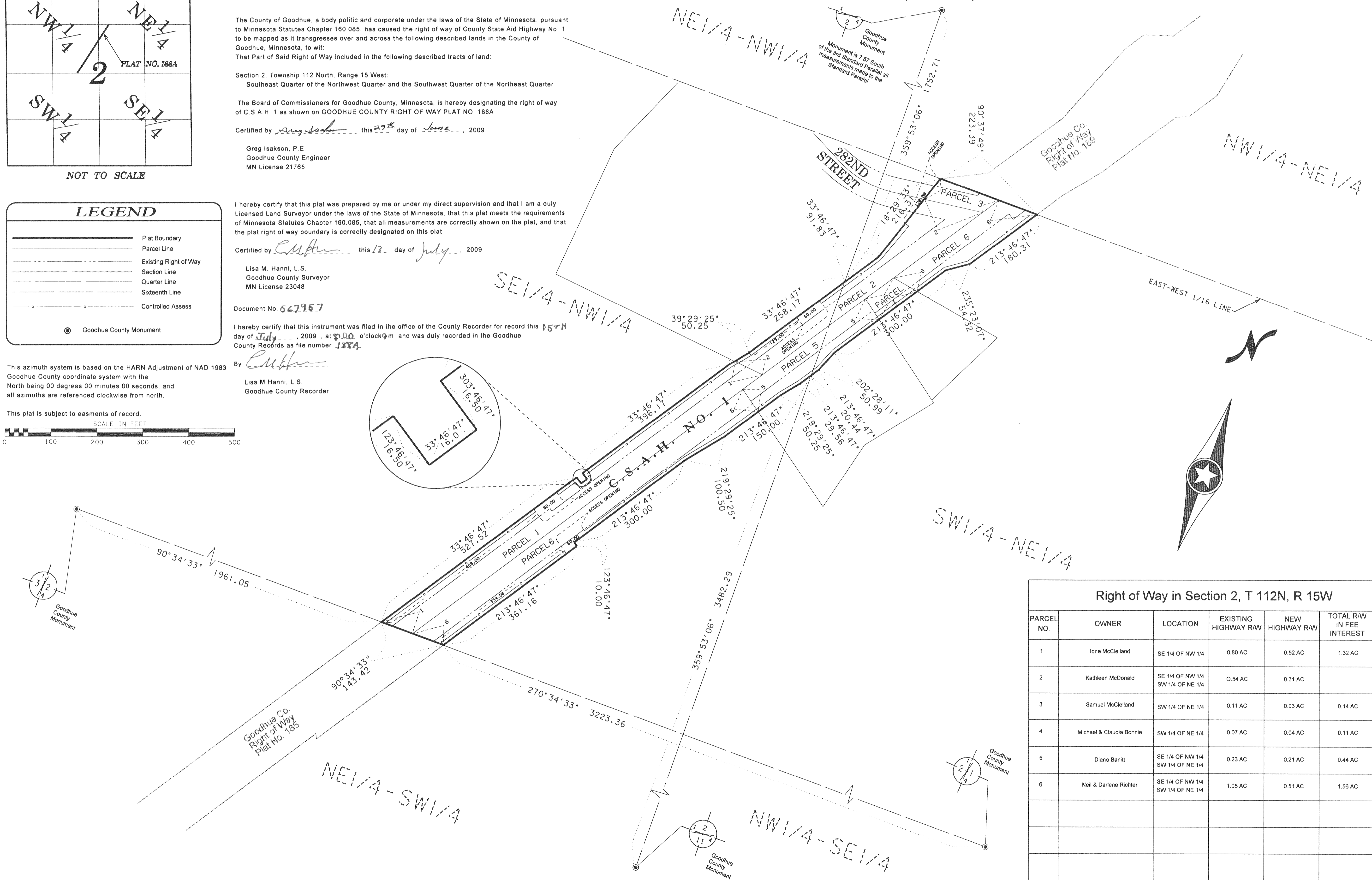
Certified by *Lisa M. Hanni* this 13 day of July, 2009

Lisa M. Hanni, L.S.  
Goodhue County Surveyor  
MN License 23048

Document No. 667967

I hereby certify that this instrument was filed in the office of the County Recorder for record this 15<sup>th</sup> day of July, 2009, at 8:00 o'clock PM and was duly recorded in the Goodhue County Records as file number 188A

By *Lisa M. Hanni*  
Lisa M. Hanni, L.S.  
Goodhue County Recorder



Right of Way in Section 2, T 112N, R 15W					
PARCEL NO.	OWNER	LOCATION	EXISTING HIGHWAY R/W	NEW HIGHWAY R/W	TOTAL R/W IN FEE INTEREST
1	Ione McClelland	SE 1/4 OF NW 1/4	0.80 AC	0.52 AC	1.32 AC
2	Kathleen McDonald	SE 1/4 OF NW 1/4 SW 1/4 OF NE 1/4	0.54 AC	0.31 AC	
3	Samuel McClelland	SW 1/4 OF NE 1/4	0.11 AC	0.03 AC	0.14 AC
4	Michael & Claudia Bonnie	SW 1/4 OF NE 1/4	0.07 AC	0.04 AC	0.11 AC
5	Diane Banitt	SE 1/4 OF NW 1/4 SW 1/4 OF NE 1/4	0.23 AC	0.21 AC	0.44 AC
6	Neil & Darlene Richter	SE 1/4 OF NW 1/4 SW 1/4 OF NE 1/4	1.05 AC	0.51 AC	1.56 AC