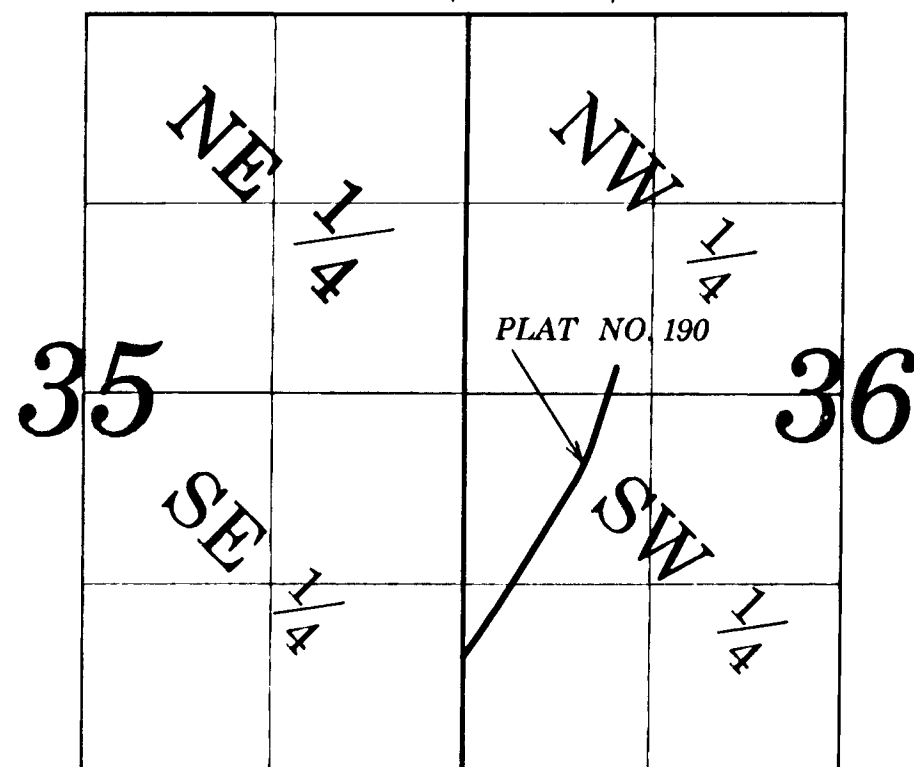


GOODHUE COUNTY RIGHT OF WAY PLAT NO. 190

County State Aid Highway No. 1

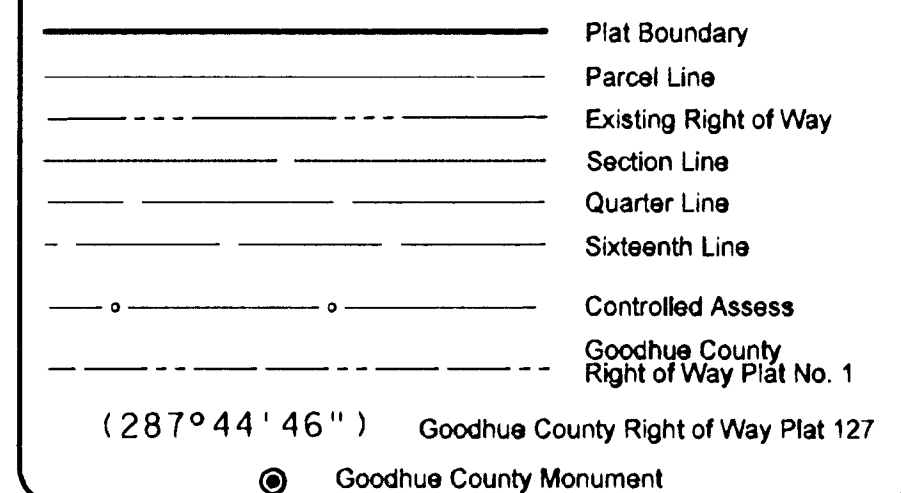
VICINITY MAP

Section 35 & 36, T.113 N., R15 W

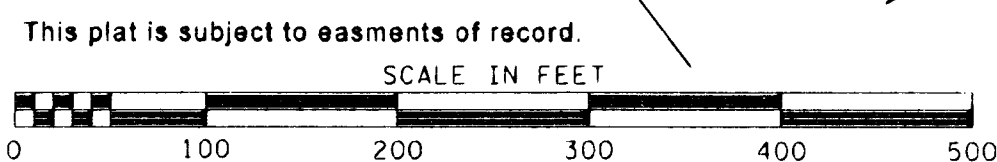


NOT TO SCALE

LEGEND



This azimuth system is based on the HARN Adjustment of NAD 1983 Goodhue County coordinate system with the North being 00 degrees 00 minutes 00 seconds, and all azimuths are referenced clockwise from north.



C1
C. AZ. = 33°20'23"
Δ = 1°05'58"
R = 11408.00
L = 218.89
CH. = 218.88

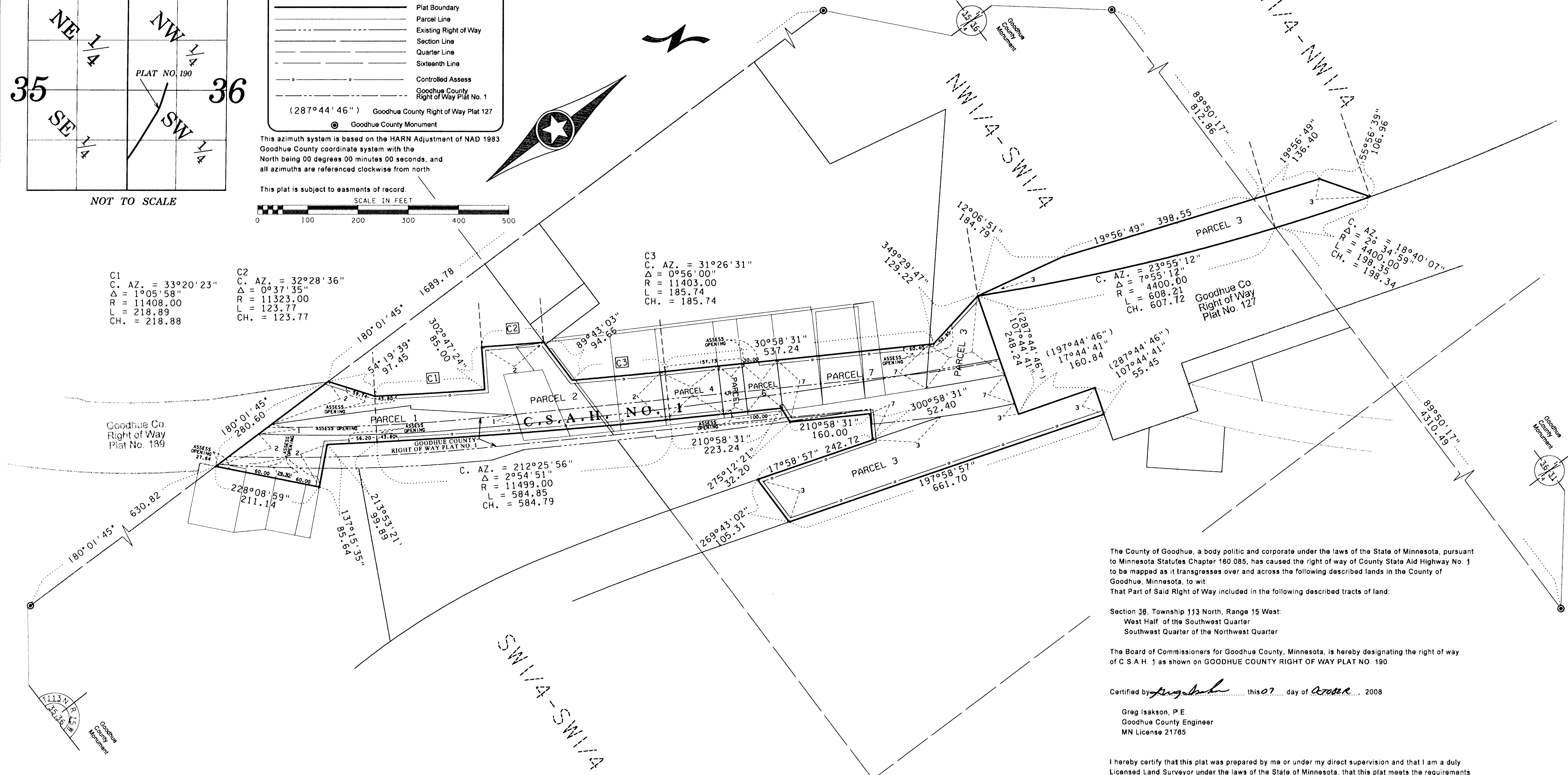
C2
C. AZ. = 32°28'36"
Δ = 0°37'35"
R = 11323.00
L = 123.77
CH. = 123.77

C3
C. AZ. = 31°26'31"
Δ = 0°56'00"
R = 11403.00
L = 185.74
CH. = 185.74

C. AZ. = 23°55'12"
Δ = 7°55'12"
R = 4400.00
L = 608.21
CH. = 607.72

C. AZ. = 18°40'07"
Δ = 2°34'59"
R = 4400.00
L = 198.35
CH. = 198.34

C. AZ. = 212°25'56"
Δ = 2°54'51"
R = 11499.00
L = 584.85
CH. = 584.79



The County of Goodhue, a body politic and corporate under the laws of the State of Minnesota, pursuant to Minnesota Statutes Chapter 180.085, has caused the right of way of County State Aid Highway No. 1 to be mapped as it transgresses over and across the following described lands in the County of Goodhue, Minnesota, to wit:

That Part of Said Right of Way included in the following described tracts of land:
Section 36, Township 113 North, Range 15 West:
West Half of the Southwest Quarter
Southwest Quarter of the Northwest Quarter

The Board of Commissioners for Goodhue County, Minnesota, is hereby designating the right of way of C.S.A.H. 1 as shown on GOODHUE COUNTY RIGHT OF WAY PLAT NO. 190

Certified by *Greg Isakson* this 07 day of October, 2008

Greg Isakson, P.E.
Goodhue County Engineer
MN License 21785

I hereby certify that this plat was prepared by me or under my direct supervision and that I am a duly Licensed Land Surveyor under the laws of the State of Minnesota, that this plat meets the requirements of Minnesota Statutes Chapter 180.085, that all measurements are correctly shown on the plat, and that the plat right of way boundary is correctly designated on this plat

Certified by *Lisa M. Hanni* this 15th day of October, 2008.

Lisa M. Hanni, L.S.
Goodhue County Surveyor
MN License 23048

Document No. 560104

I hereby certify that this instrument was filed in the office of the County Recorder for record this 17th day of October, 2008, at 11:00 o'clock a.m. and was duly recorded in the Goodhue County Records as file number 66-190

By *Lisa M. Hanni*
Lisa M. Hanni, L.S.
Goodhue County Recorder

Right of Way in Section 36, T 113N, R 15W

PARCEL NO.	OWNER	LOCATION	EXISTING HIGHWAY R/W	NEW HIGHWAY R/W	TOTAL R/W IN FEE INTEREST
1	City of Red Wing	SW 1/4 OF SW 1/4	0.00 AC	0.42 AC	0.42 AC
2	S.B. Foot	W 1/2 OF SW 1/4	0.53 AC	1.32 AC	1.85 AC
3	Budensiek & Etal	SW 1/4 OF NW 1/4 NW 1/4 OF SW 1/4	0.12 AC	2.54	2.66
4	Goodhue County	NW 1/4 OF SW 1/4	0.08 AC	0.19 AC	0.25 AC

Right of Way in Section 36, T 113N, R 15W

PARCEL NO.	OWNER	LOCATION	EXISTING HIGHWAY R/W	NEW HIGHWAY R/W	TOTAL R/W IN FEE INTEREST
5	S.B. Foot	NW 1/4 OF SW 1/4	0.03 AC	0.08 AC	0.11 AC
6	Goodhue County	NW 1/4 OF SW 1/4	0.04 AC	0.11 AC	0.15 AC
7	S.B. Foot	NW 1/4 OF SW 1/4	0.69 AC	0.49 AC	1.18 AC